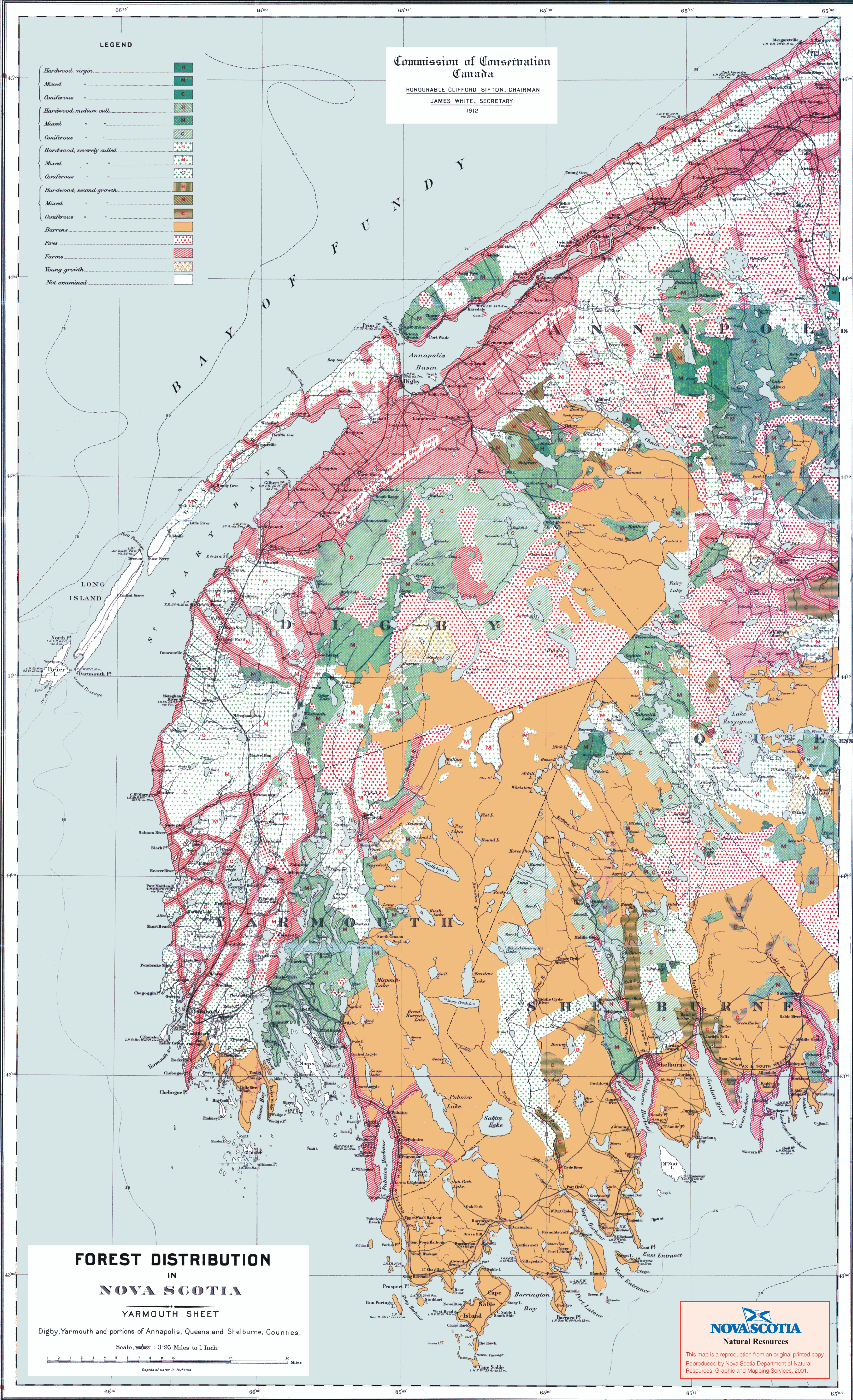


LEGEND

| | |
|-------------------------|---|
| Hardwood, virgin | H |
| Mixed | M |
| Coniferous | C |
| Hardwood, medium cull | H |
| Mixed | M |
| Coniferous | C |
| Hardwood, severely cull | H |
| Mixed | M |
| Coniferous | C |
| Hardwood, second growth | H |
| Mixed | M |
| Coniferous | C |
| Barrons | B |
| Fires | F |
| Farms | F |
| Young growth | Y |
| Not examined | W |

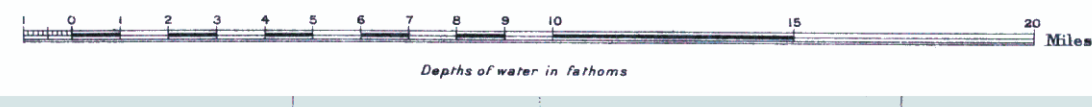
Commission of Conservation
Canada
HONOURABLE CLIFFORD SIFTON, CHAIRMAN
JAMES WHITE, SECRETARY
1912



**FOREST DISTRIBUTION
IN
NOVA SCOTIA
YARMOUTH SHEET**

Digby, Yarmouth and portions of Annapolis, Queens and Shelburne, Counties,

Scale, 350,000 : 3.95 Miles to 1 Inch



NOVASCOTIA
Natural Resources

This map is a reproduction from an original printed copy.
Reproduced by Nova Scotia Department of Natural Resources, Graphic and Mapping Services, 2001.