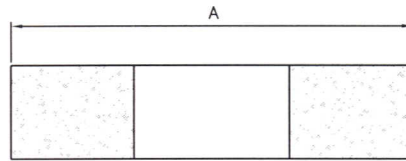
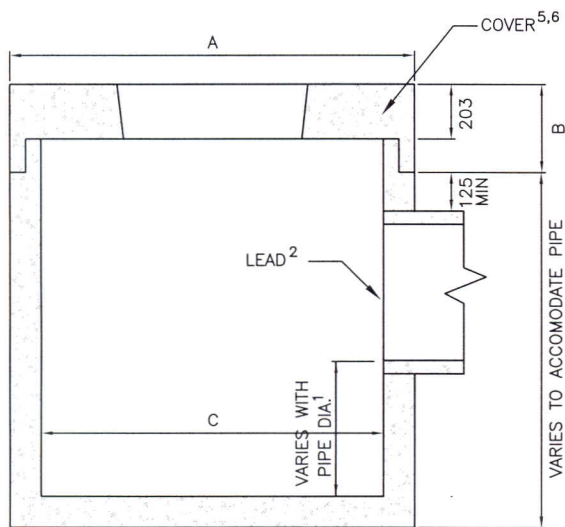


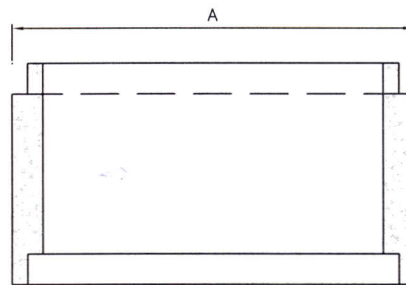
PLAN



GRADE RING DETAIL<sup>4</sup>



SECTION A-A



INTERMEDIATE RING DETAIL<sup>3</sup>

CATCH BASIN - TABLE OF SIZES - METRIC (mm)							
BASE SECTION					TOP SECTION		
SIZE	UNIT DESIGNATION	A	B	C	UNIT DESIGNATION	A	B
1200 mm	EPB_____	1473	1219	750 $\phi$	EPC 200	1473	286
1500 mm	KPB_____	1828	1524	900 $\phi$	KPC 200	1828	324
1800 mm	LPB_____	2222	1828	1200 $\phi$	LPC 200	2222	336
2100 mm	RPB_____	2578	2134	1500 $\phi$	RPC 200	2578	330
2400 mm	QPB_____	2934	2438	1800 $\phi$	QPC 200	2934	336

NOTES:

- MINIMUM SUMP 450mm.
- MAXIMUM 3 LEADS (2-600mm $\phi$ , 1-300mm $\phi$ ).
- INTERMEDIATE RINGS AVAILABLE IN 500mm, 750mm, 1000mm, 1250mm DEPTHS.
- GRADE RINGS AVAILABLE IN 150mm, 300mm AND 400mm DEPTHS.
- REQUIRED COVER S401 OR S361 OR EQUIVALENT.
- OPTIONAL COVERS AVAILABLE CPC 175D (DUPEX COVER) OR CPC 450 (50 000kg LOADING).
- ALL DIMENSIONS ARE IN MILLIMETRES UNLESS OTHERWISE NOTED.

Scale : N.T.S.  
 Drawn by : M.LABRECHE  
 Checked by : W.DEVEAU  
 Date of Plan : AUG2009  
 File No. : S-2009-056

*Philip Cohen*  
 Manager Highway Planning and Design

*[Signature]*  
 Director Highway Engineering Services

*[Signature]*  
 Executive Director Highway Engineering and Construction



No.	REVISION

**TYPICAL 1200 - 2400mm  $\phi$   
 CATCH BASIN**