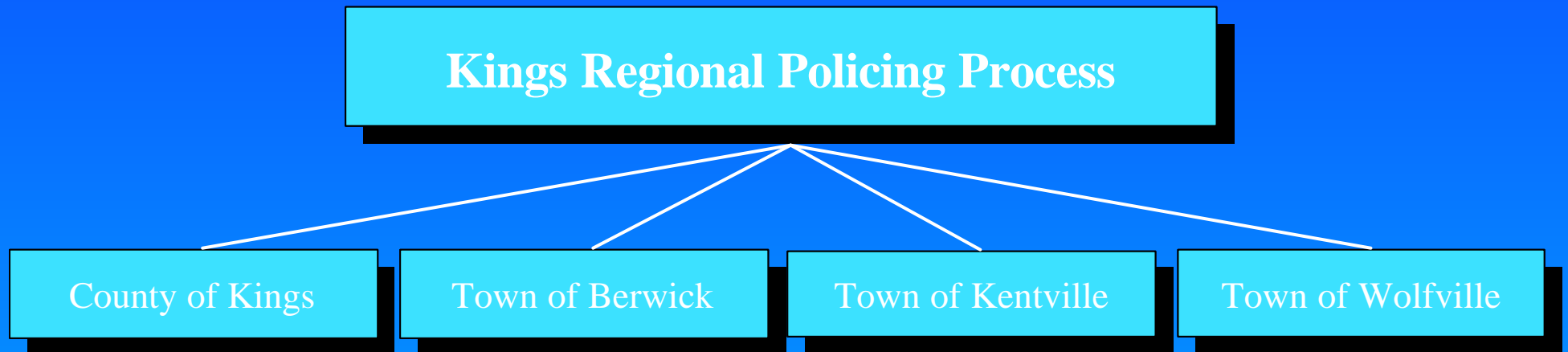


Municipal Cooperation and Partnership Seminar

Halifax, November 04, 2003



Roy Brideau , CAO Wolfville

Darrell Harvey RCMP

Presentation Outline

- Background
- Objectives
- Process
- Questions

Background

- Previous Studies
- Regional Municipal policing options, Kings County units plus Hantsport / plus three Towns of Annapolis County
- Wolfville & Hantsport consider joint Municipal force
- Berwick studies Municipal Policing Models and moves to RCMP Service
- Wolfville studies Municipal Policing Models and moves to the RCMP
- Kentville considers RCMP – true attempts

Background (continued)

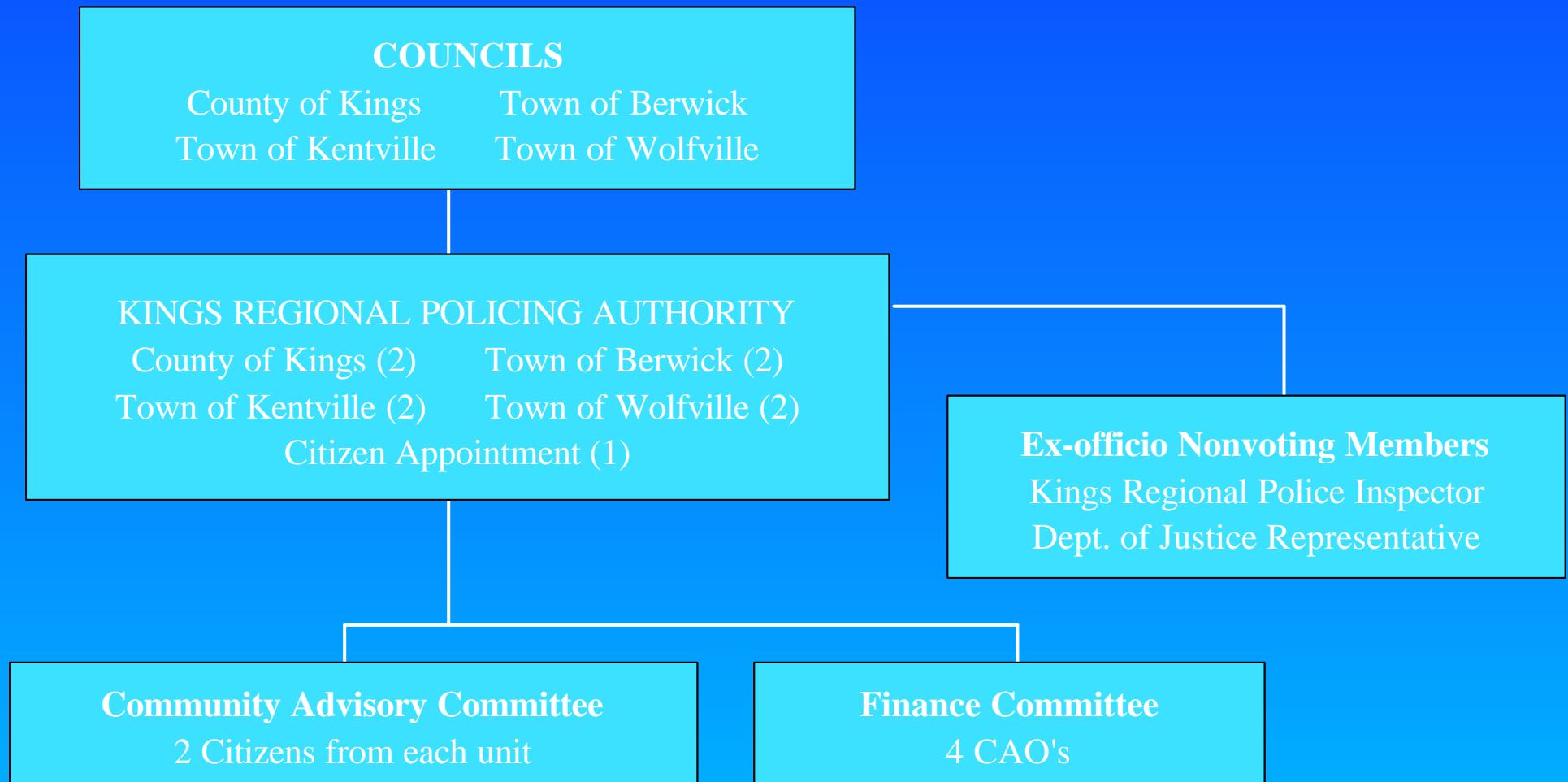
- August 1999 Berwick expanded policing jurisdiction
- Spring 2002 Wolfville request expanded policing jurisdiction study
- Berwick and Kings County hold informal discussions on Regional Policing
- Wolfville approach re Regional Policing
- July 2002 Mayors/ Warden committee followed by a meeting of the 4 Municipal units discuss Regional Policing and agree to request study

Objectives

- Complete the study process and present a plan to a joint meeting of the 4 Municipal Units
- Develop a Policing Model that would address our current & future needs
- Develop a Financial Plan including a cost sharing formula

Objectives (continued)

- Develop a governance structure that is both representative and fits within the authority of the new Police Act



Process

- RCMP
 - service provider,
 - contract mechanisms
- Department of Justice (NS)
 - contract agency
- Minister of Justice (NS)
 - request and approval

Process (continued)

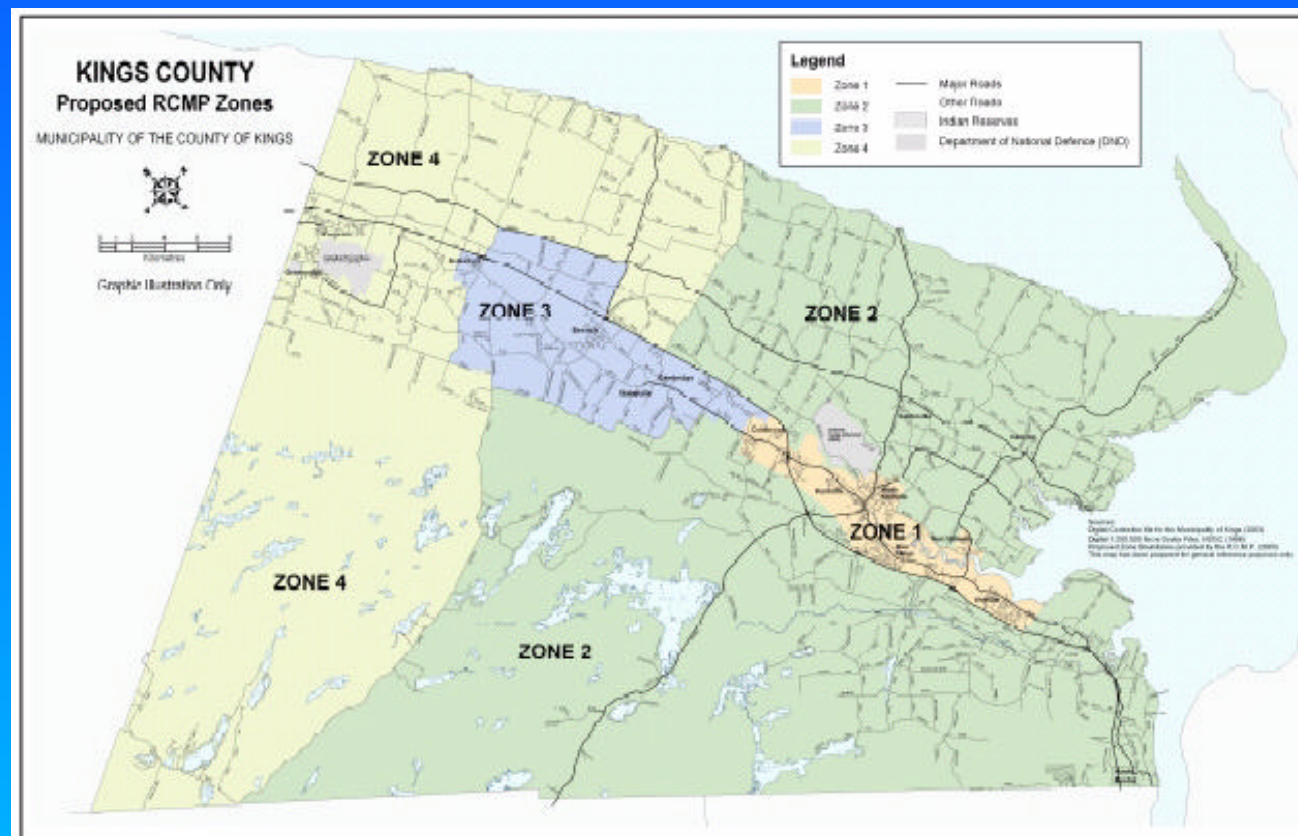
- POLICING REVIEW COMMITTEE
 - 4 CAO's
 - DOJ Analyst
 - Kings Detachment Commander
 - Client Services OIC & Staff
- COMMITTEE ROLE
 - Provide conduit for information
 - Develop the proposal & supporting mechanisms
 - Ensure service expectations of Minister are met

Process (continued)

- PROPOSAL DEVELOPMENT
 - CAO's - Finance and Governance
 - RCMP - Policing Model
 - DOJ - Review & approval of level of service
- INFORMATION UTILIZED
 - Governance interviews
 - Operational, Demographic & Geographic
 - Knowledge of Contract mechanisms
 - Experience of knowledgeable Police Officers

Process (continued)

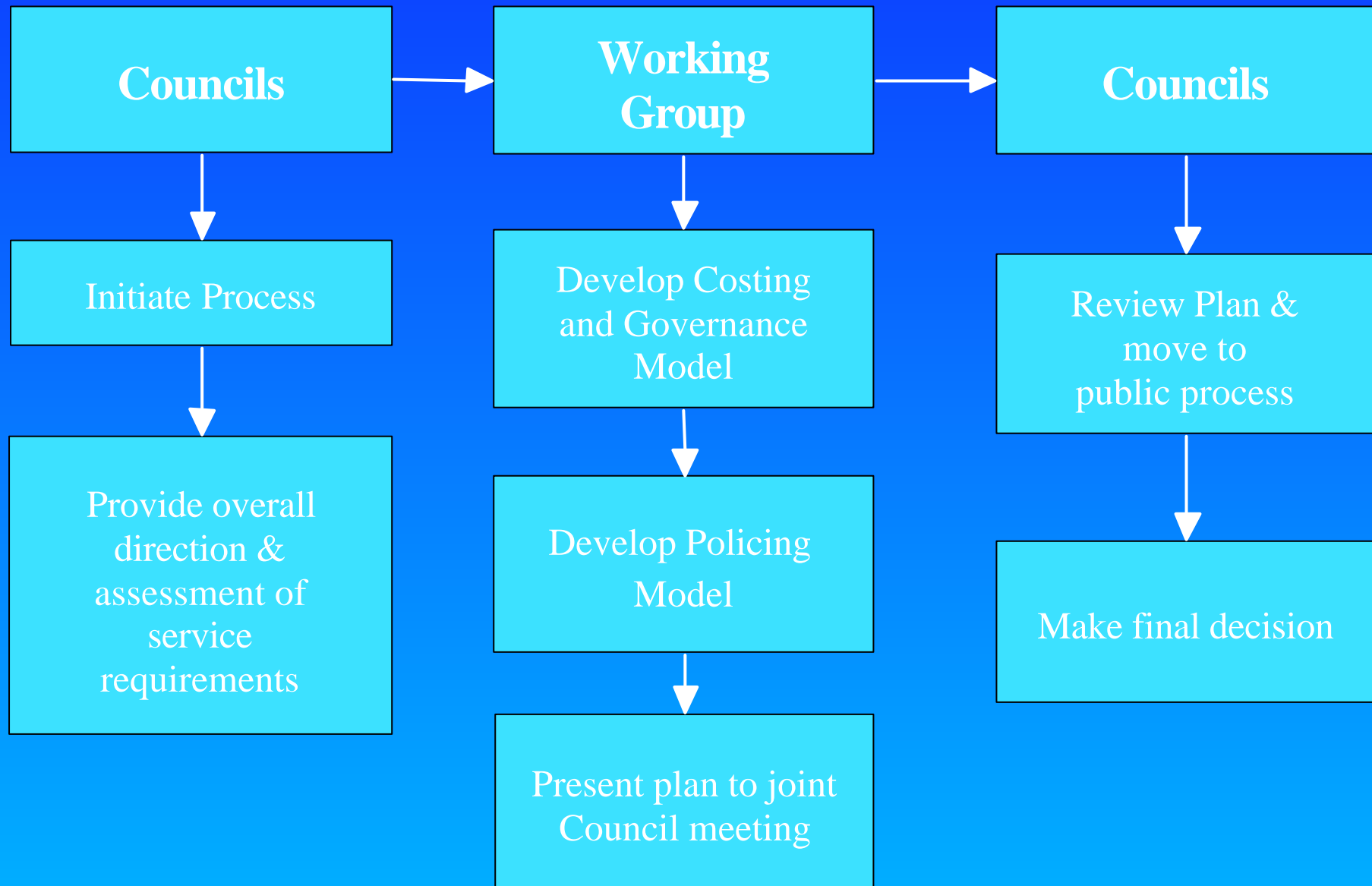
- POLICE MODEL
 - Regional Model for the entire county
 - 4 Zones based on service needs not municipal boundaries



Process (continued)

- POLICE MODEL
- COMBINED PPSA & MPSA RESOURCES

Regional Policing Model



Questions