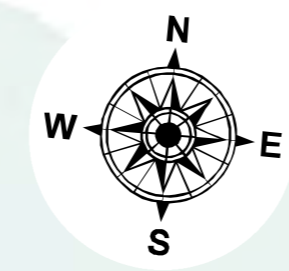
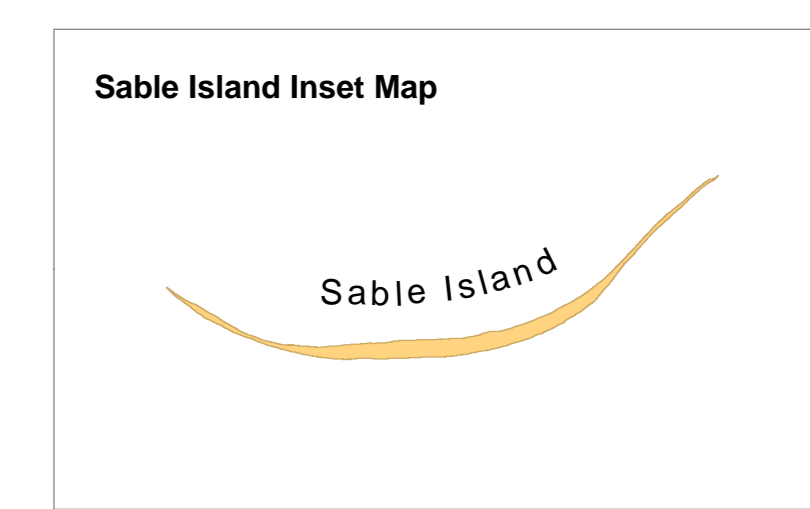
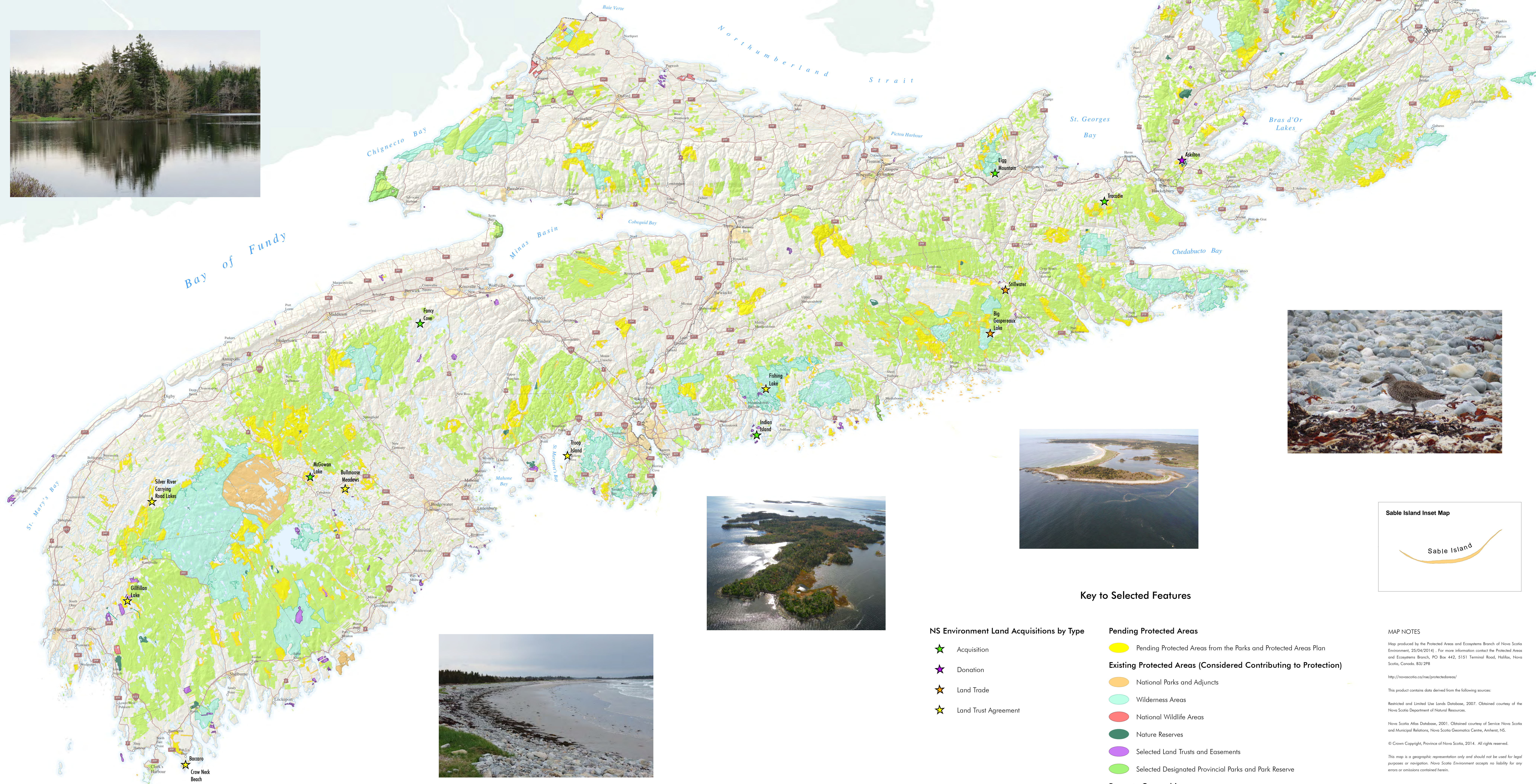


Nova Scotia Environment Land Acquisitions 2013-2014

Also Displaying Existing Lands Contributing to Protection,
Pending Protected Areas from The Parks and Protected Areas Plan
and Crown Land



Scale 1:500,000
1 cm = 5 km or 1 in = 8 miles
North American Datum 1983, CSRS 98
Universal Transverse Mercator, zone 20 T.



Key to Selected Features

- | | |
|---|--|
| NS Environment Land Acquisitions by Type | Pending Protected Areas |
| ★ Acquisition | Yellow circle: Pending Protected Areas from the Parks and Protected Areas Plan |
| ★ Donation | Existing Protected Areas (Considered Contributing to Protection) |
| ★ Land Trade | Orange circle: National Parks and Adjuncts |
| ★ Land Trust Agreement | Light blue circle: Wilderness Areas |
| | Red circle: National Wildlife Areas |
| | Dark green circle: Nature Reserves |
| | Purple circle: Selected Land Trusts and Easements |
| | Light green circle: Selected Designated Provincial Parks and Park Reserve |
| | Property Ownership |
| | Light green circle: Crown Land |

MAP NOTES
Map produced by the Protected Areas and Ecosystems Branch of Nova Scotia Environment, 26/04/2014. For more information contact the Protected Areas and Ecosystems Branch, PO Box 442, 5151 Terminal Road, Halifax, Nova Scotia, Canada, B3J 2R8.
<http://novascotia.ca/ise/protectedareas/>
This product contains data derived from the following sources:
Restricted and Limited Use Lands Database, 2007. Obtained courtesy of the Nova Scotia Department of Natural Resources.
Nova Scotia Atlas Database, 2001. Obtained courtesy of Service Nova Scotia and Municipal Relations, Nova Scotia Geomatics Centre, Annapolis, NS.
© Crown Copyright, Province of Nova Scotia, 2014. All rights reserved.
This map is a geographic representation only and should not be used for legal purposes or navigation. Nova Scotia Environment accepts no liability for any errors or omissions contained herein.

