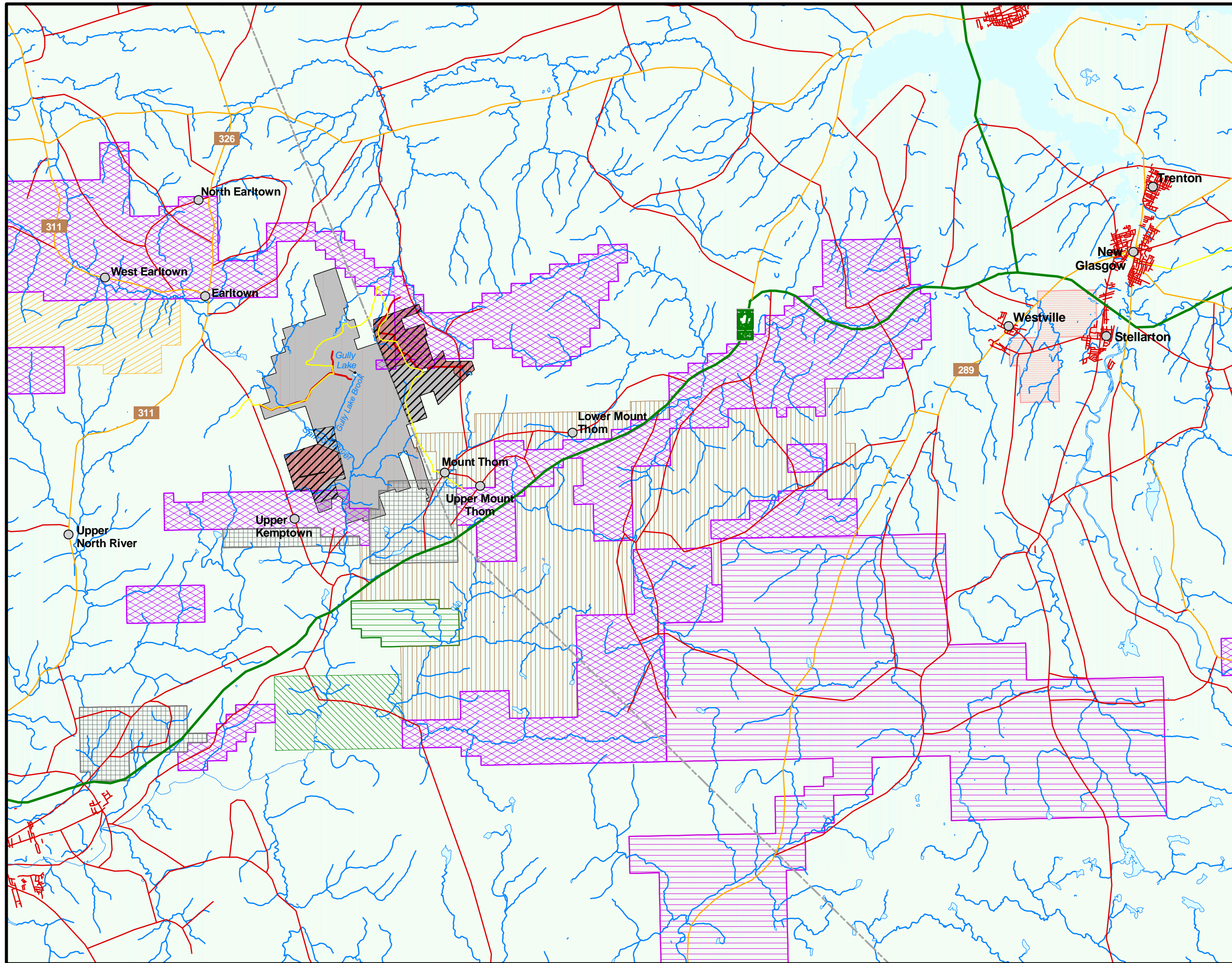
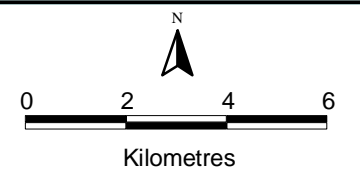


Figure 2-2
Gully Lake Encumbrances & Holdings



Legend

- Locations
- County Lines
- Rivers
- '104' Snowmobile Trail
- Road Features**
- Trans Canada Highway
- Collector Highway
- Major/Local Road
- Lakes
- Crown Land Excluded from Candidate Wilderness Area
- Candidate Wilderness Area
- Encumbrances**
- Forest Encumbrance
- Mineral Exploration**
- Avalon Ventures Ltd.
- Candor Ventures Corp.
- Cobequid Gold Corporation Ltd.
- Cullen, Michael P.
- Grant, Scott
- Hudgins, Avar D.
- Monster Copper Resources Inc.
- Pioneer Coal Limited



Note: Some portions of mineral licenses shown to overlap with the Candidate Wilderness Area are not considered an encumbrance because they were issued after the June, 2003 mineral closure.

Map Parameters
 Projection: 3° MTM
 Datum: ATS77
 Zone: 4
 Scale: 1:150,000
 Date: November 1, 2004
 Project: NSD18417



Data Source: Nova Scotia Environment & Labour
 Mineral Rights Data Source: NSDNR