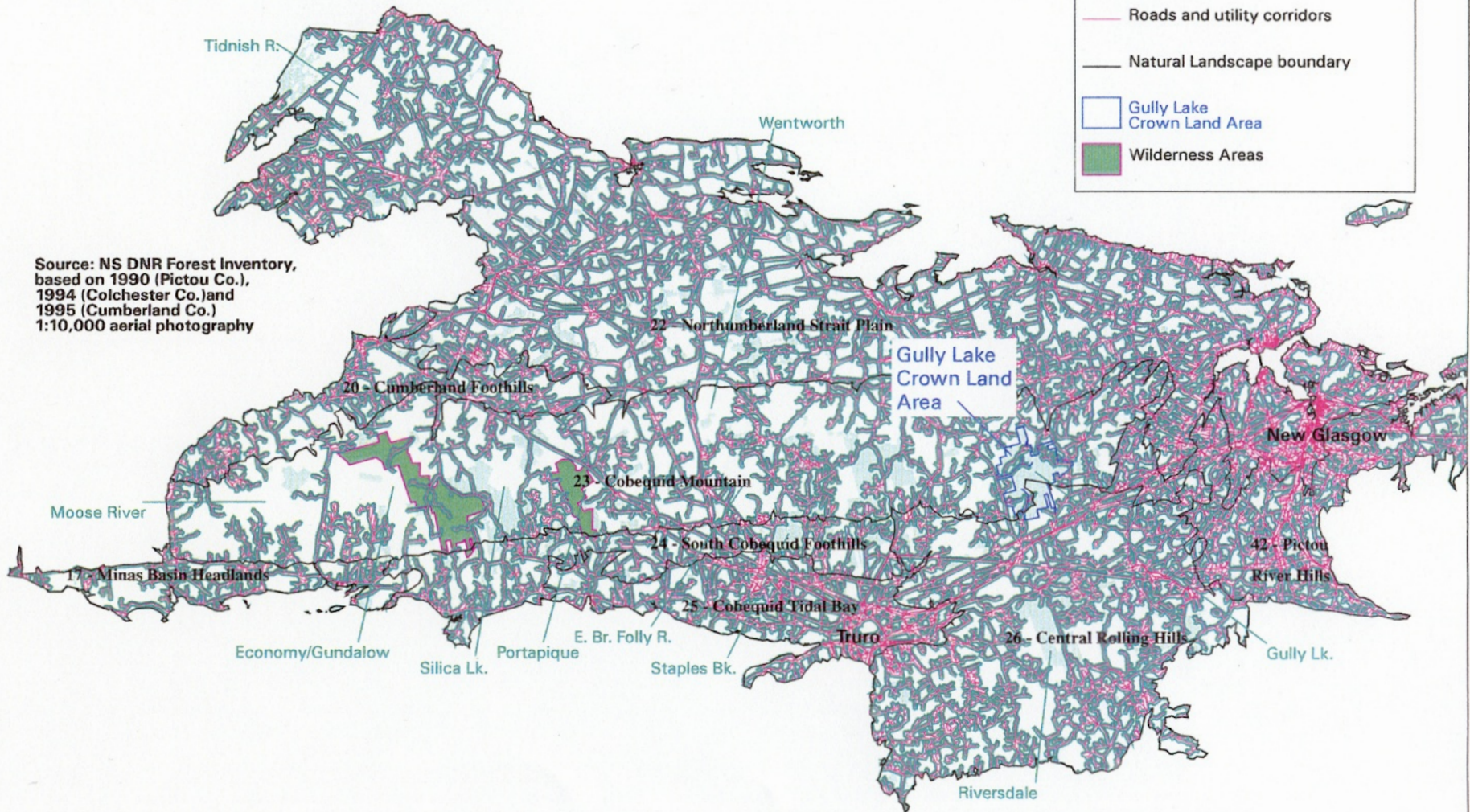


Map 3. Fragmentation Analysis: Areas of Land > 200 meters from roads and utility corridors in Selected Landscapes in North-central Nova Scotia.



Source: NS DNR Forest Inventory, based on 1990 (Pictou Co.), 1994 (Colchester Co.) and 1995 (Cumberland Co.) 1:10,000 aerial photography

SCALE 1:700,000