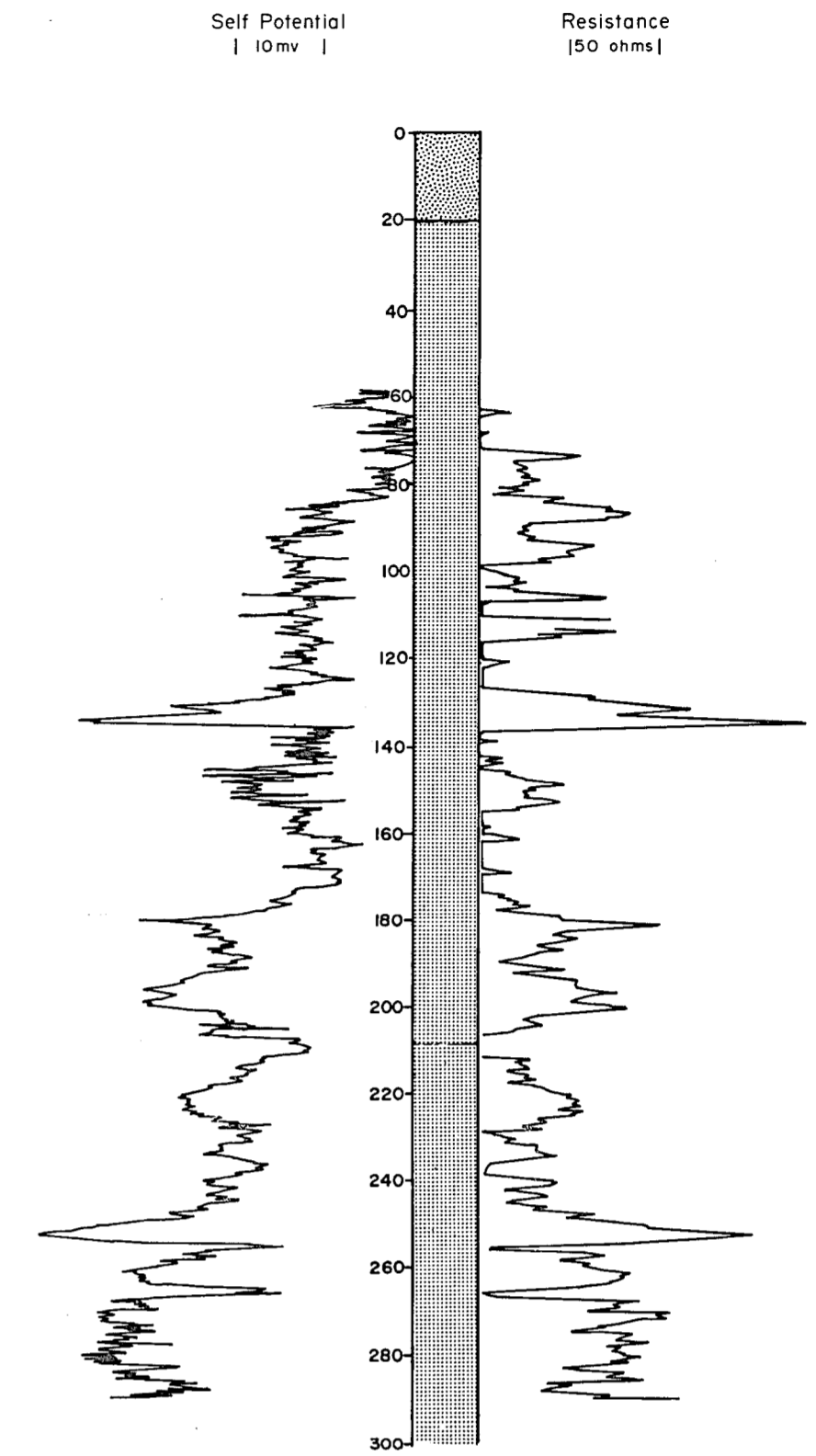
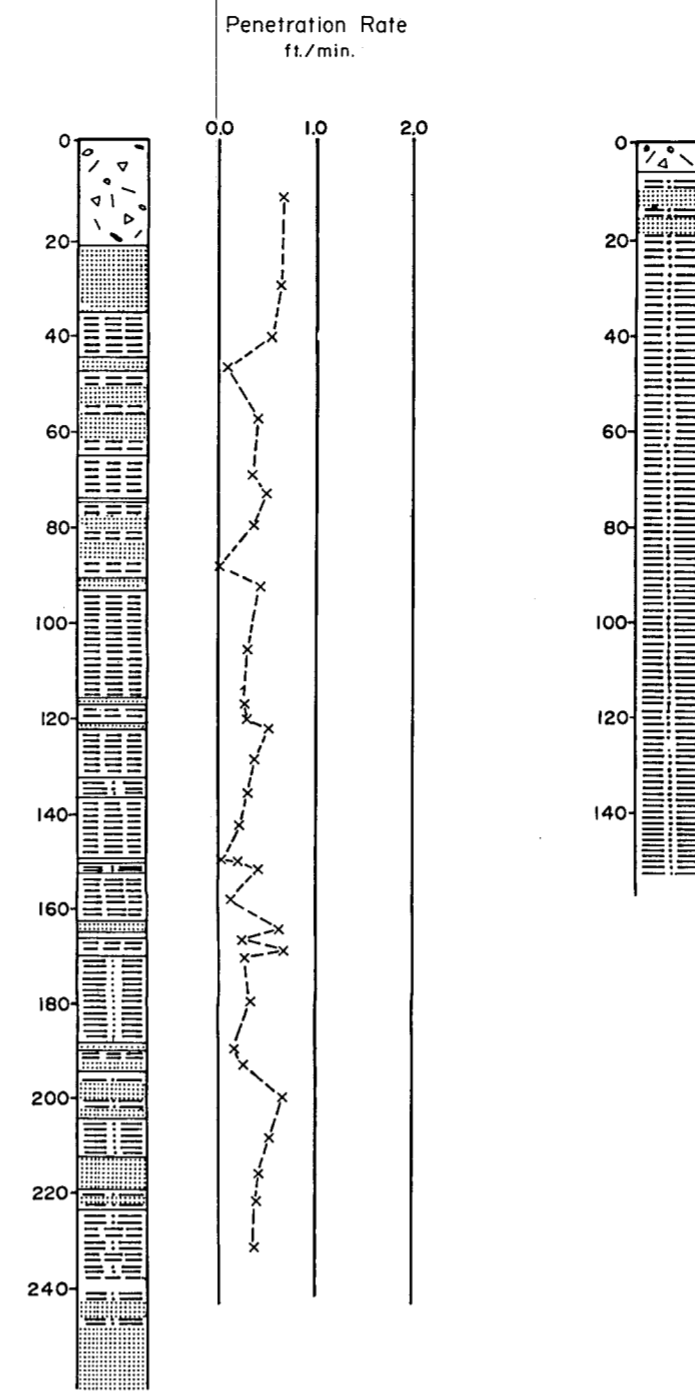
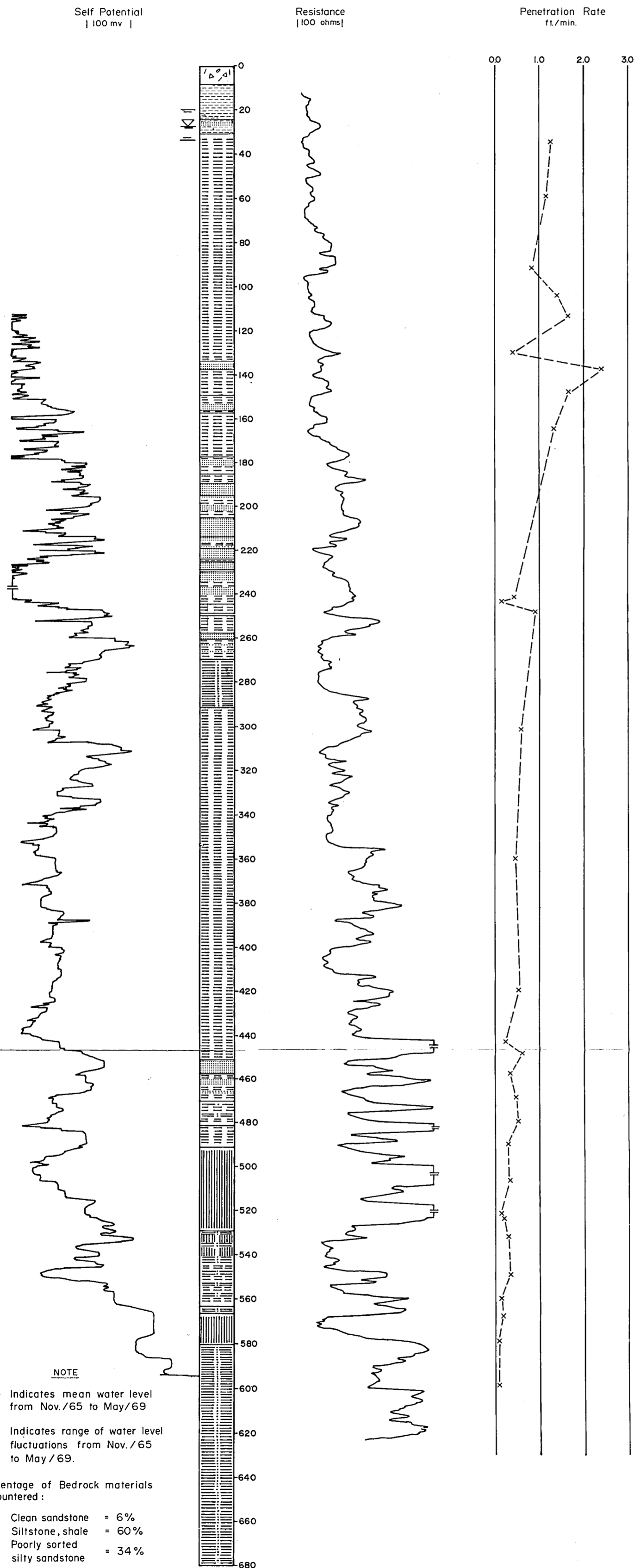


N.S. DEPT. OF MINES
TEST HOLE No. 299
(OBSERVATION WELL)
11-E-6-B-97-0

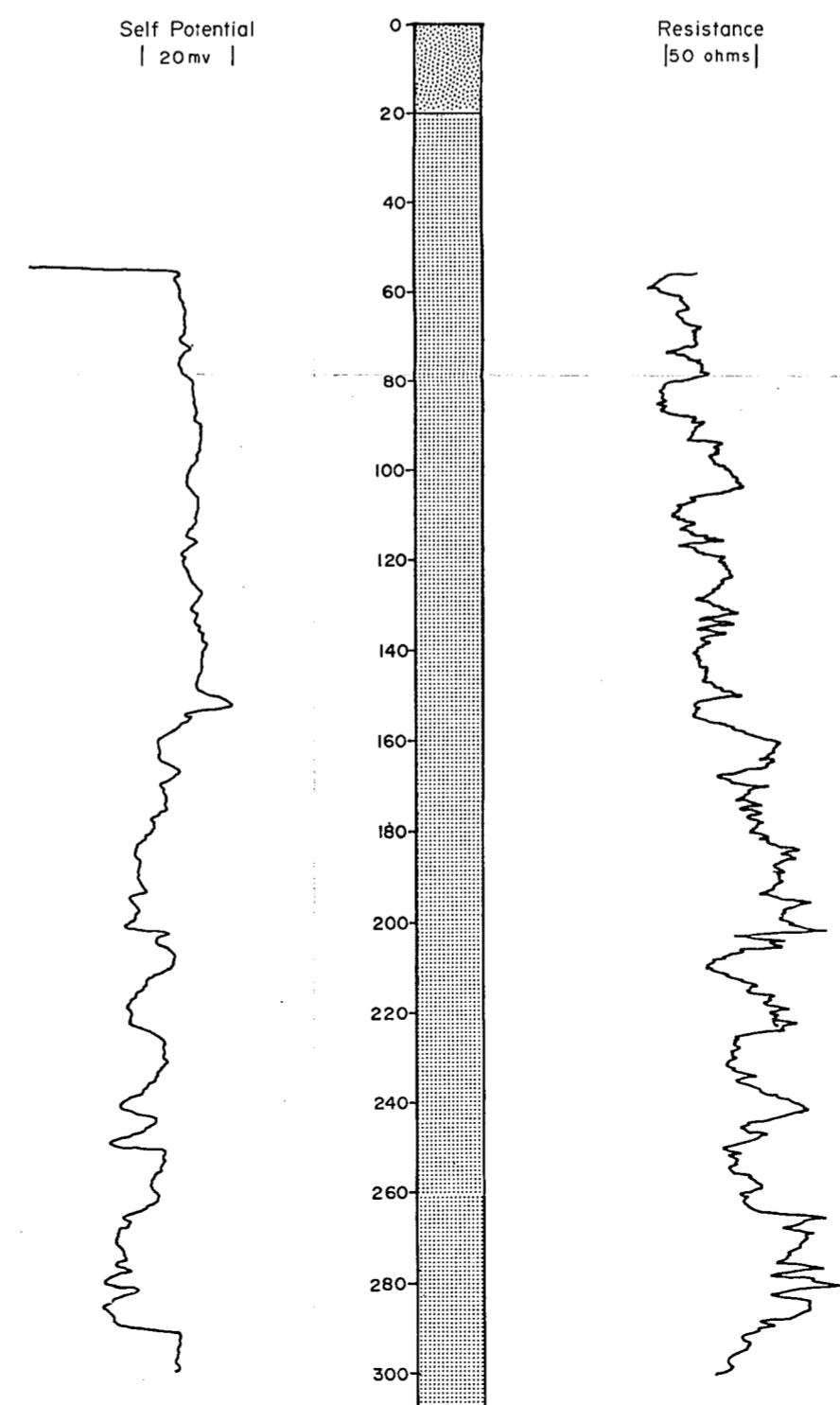
N.S. DEPT. OF MINES
TEST HOLE No. 298
(OBSERVATION WELL)
11-E-6-B-97-0

DEPARTMENT OF
NATIONAL DEFENCE
S.R. WELL No. 3
11-E-6-C-39-K

NOVA SCOTIA
AGRICULTURAL COLLEGE
WELL No. 1
11-E-6-B-92-L



NOVA SCOTIA
AGRICULTURAL COLLEGE
WELL No. 58
11-E-6-B-97-L



LEGEND

	GLACIAL TILL		SHALE
	CLAY		SILTSTONE
	SAND		SANDSTONE
	GREYWACKE		

NOTE

∇ - Indicates mean water level from Nov./65 to May/69

|| - Indicates range of water level fluctuations from Nov./65 to May/69.

Percentage of Bedrock materials encountered:

Clean sandstone = 6%

Siltstone, shale = 60%

Poorly sorted silty sandstone = 34%

APPENDIX B
GRAPHIC LOGS, ELECTRIC LOGS
AND PENETRATION RATES
OF
WELLS DRILLED INTO THE
WOLFFVILLE FORMATION IN THE
TRURO AREA