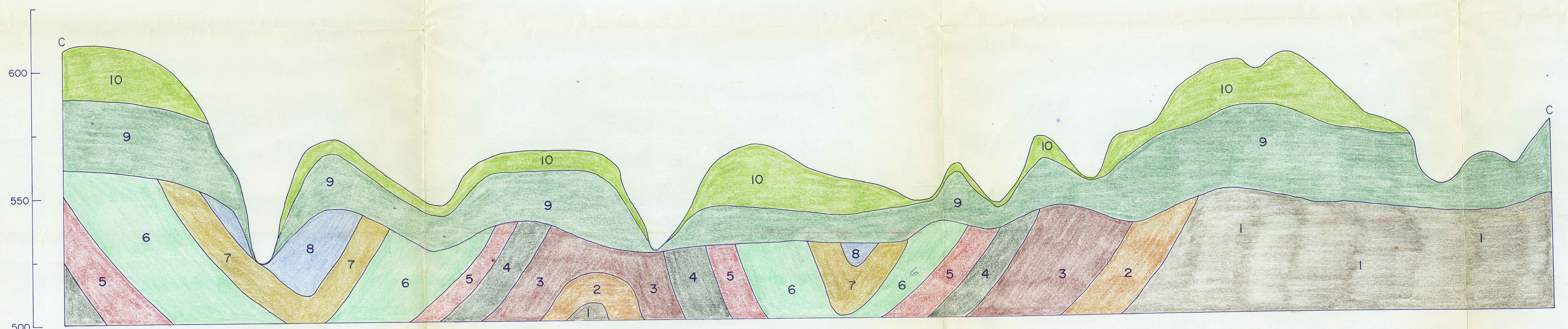


# CROSS SECTION OF SURFICIAL GEOLOGY: FRASER BROOK WATERSHED



- 10 SANDY TILL
- 9 CLAY TILL
- 8 SILTSTONE
- 7 SANDSTONE & QUARTZ
- 6 SILTSTONE
- 5 SHALE
- 4 SANDSTONE
- 3 SILTSTONE
- 2 SILTSTONE
- 1 SANDSTONE

Elevation Above Sea Level

VIEW NORTH EAST

HOR. SCALE: 1" to 400'  
 VERT. SCALE: 1" to 20'  
 AUG. 31, 1966.

Geology by : T. W. Hennigar