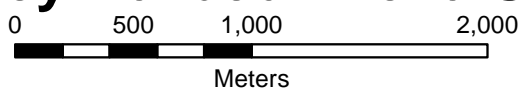


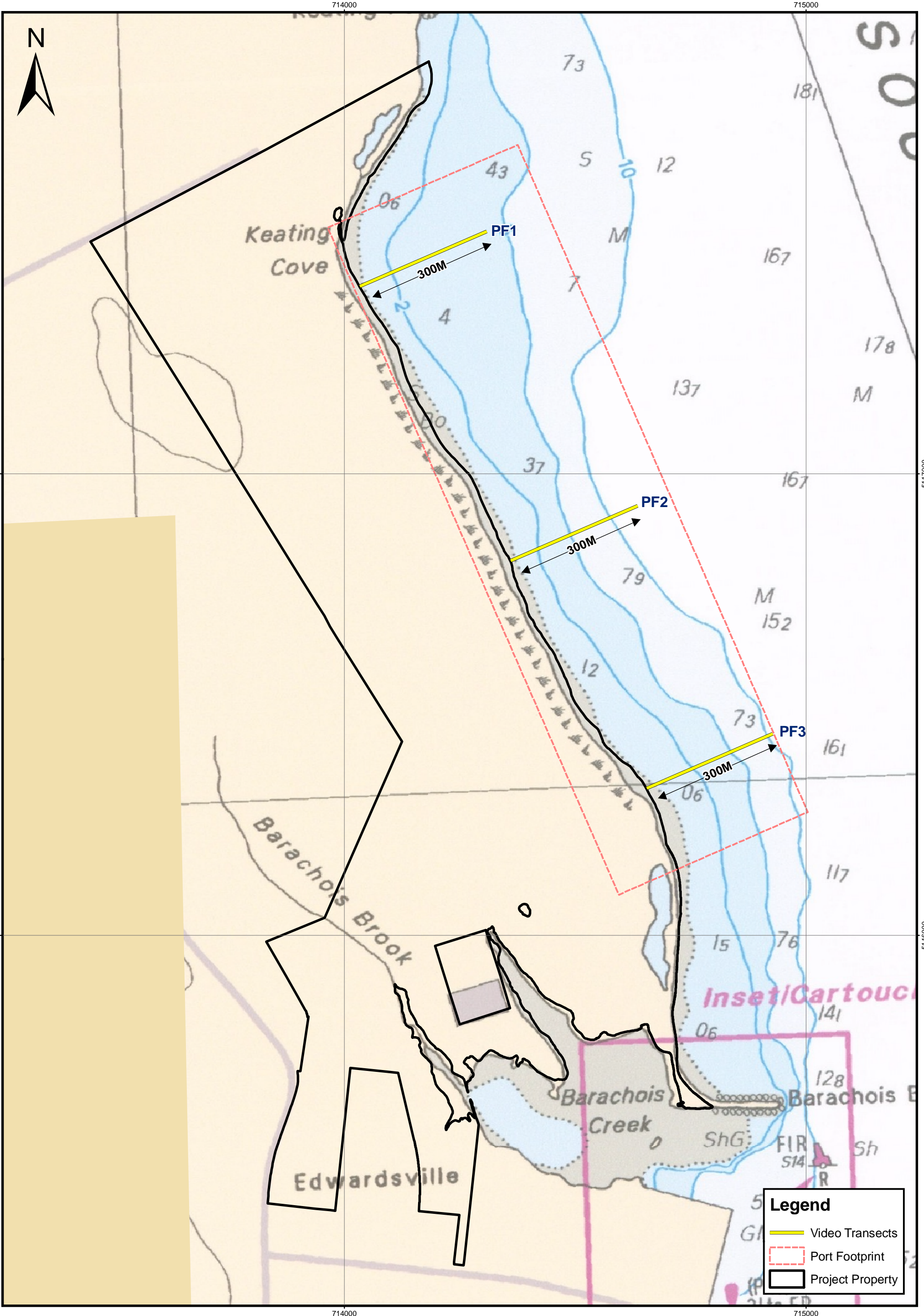
Figure 1

# Benthic Survey Areas, Sydney Harbour Nova Scotia

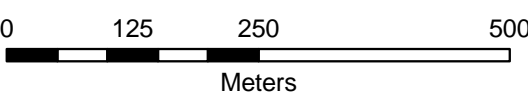
Map Parameters  
 Projection: UTM-NAD83-Z20  
 Scale 1:32,000  
 Date: February 18th, 2008  
 Project No.: 1034000.

Data Sources:  
 Planimetric Data - NSGC; Nova Scotia Topographic Database, 1997, 1:10 000 (GeoNOVA)  
 Project Components - provided by client.  
 Navigation Chart - 4266 Sydney Harbour (1 : 20,000)





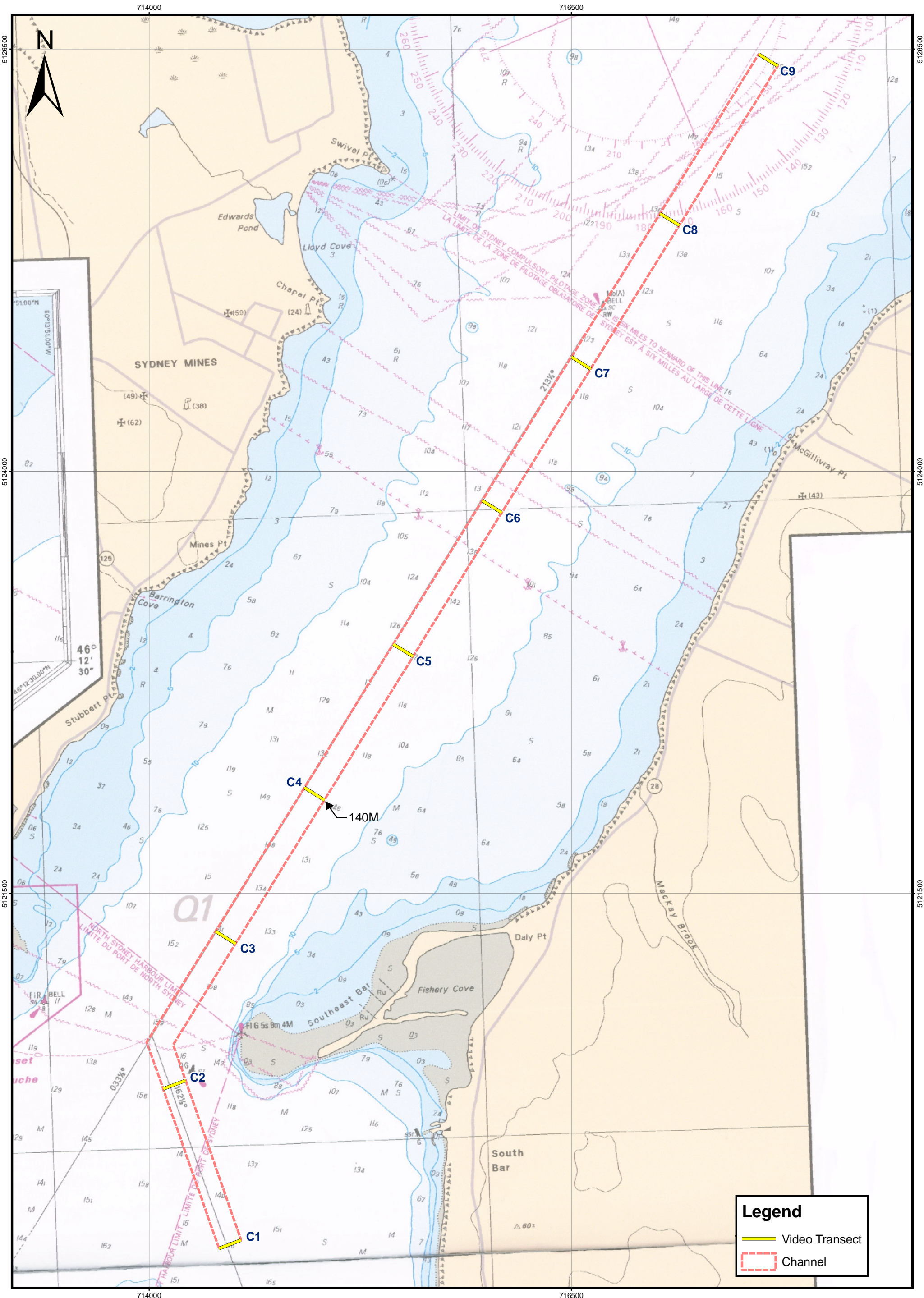
**Figure 2**  
**Terminal Footprint Transects**



Map Parameters  
 Projection: UTM-NAD83-Z20  
 Scale: 1:7,500  
 Date: February 18th, 2008  
 Project No.: 1034000.

Data Sources:  
 Planimetric Data - NSGC; Nova Scotia Topographic Database, 1997, 1:10 000 (GeoNOVA)  
 Project Components - provided by client.  
 Navigation Chart - 4266 Sydney Harbour (1 : 20,000)

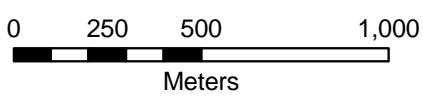


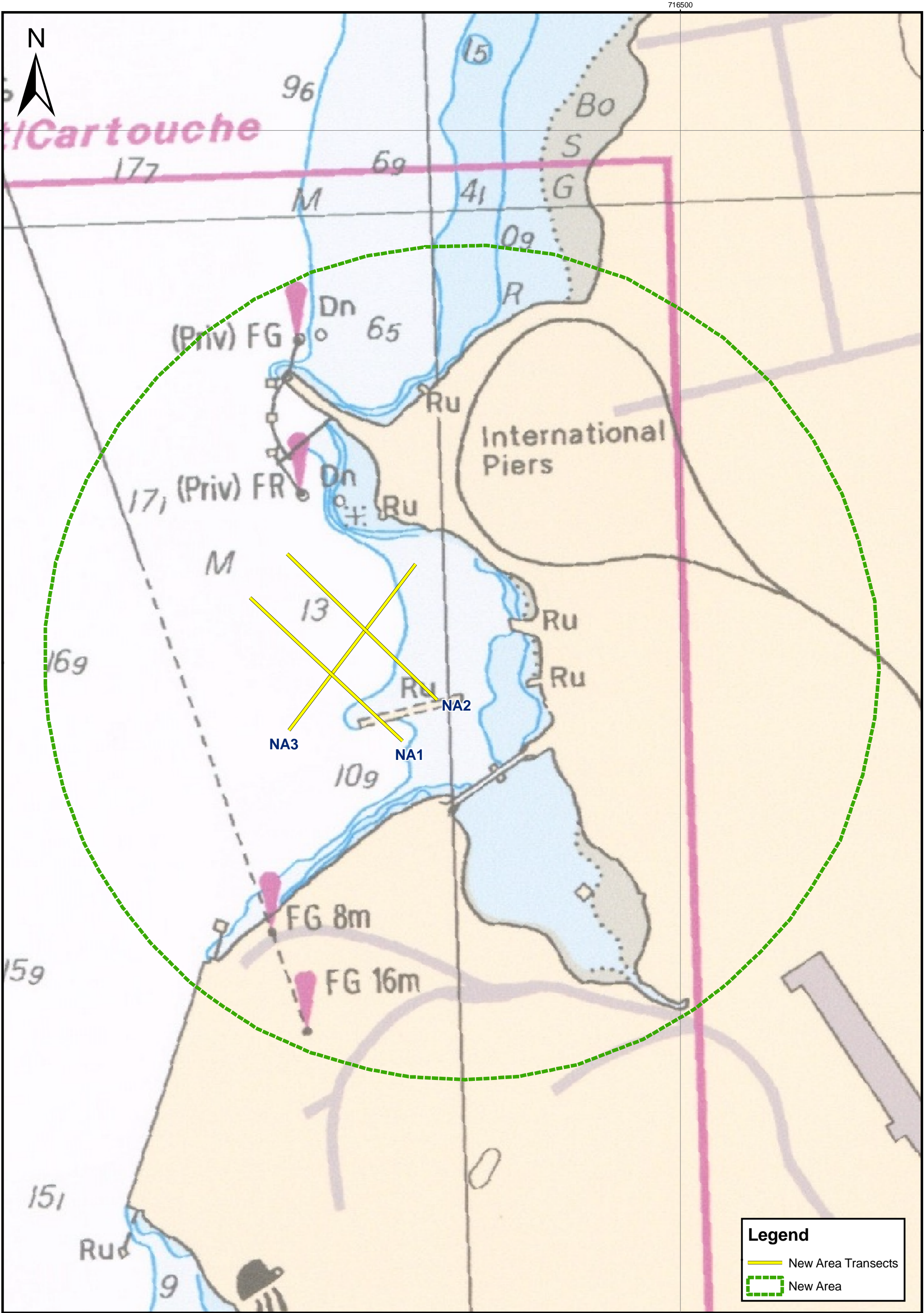


Map Parameters  
 Projection: UTM-NAD83-Z20  
 Scale: 1:20,000  
 Date: February 18th, 2008  
 Project No.: 1034000.

Data Sources:  
 Planimetric Data - NSGC; Nova Scotia Topographic Database, 1997, 1:10 000 (GeoNOVA)  
 Project Components - provided by client.  
 Navigation Chart - 4266 Sydney Harbour (1 : 20,000)

**Figure 3**  
**Channel Transects**





**Legend**

- New Area Transects
- New Area

Map Parameters  
 Projection: UTM-NAD83-Z20  
 Scale: 1:20,000  
 Date: February 18th, 2008  
 Project No.: 1034000.

Data Sources:  
 Planimetric Data - NSGC; Nova Scotia Topographic Database, 1997, 1:10 000 (GeoNOVA)  
 Project Components - provided by client.  
 Navigation Chart - 4266 Sydney Harbour (1 : 20,000)

**Figure 4**  
**New Area Transects**

