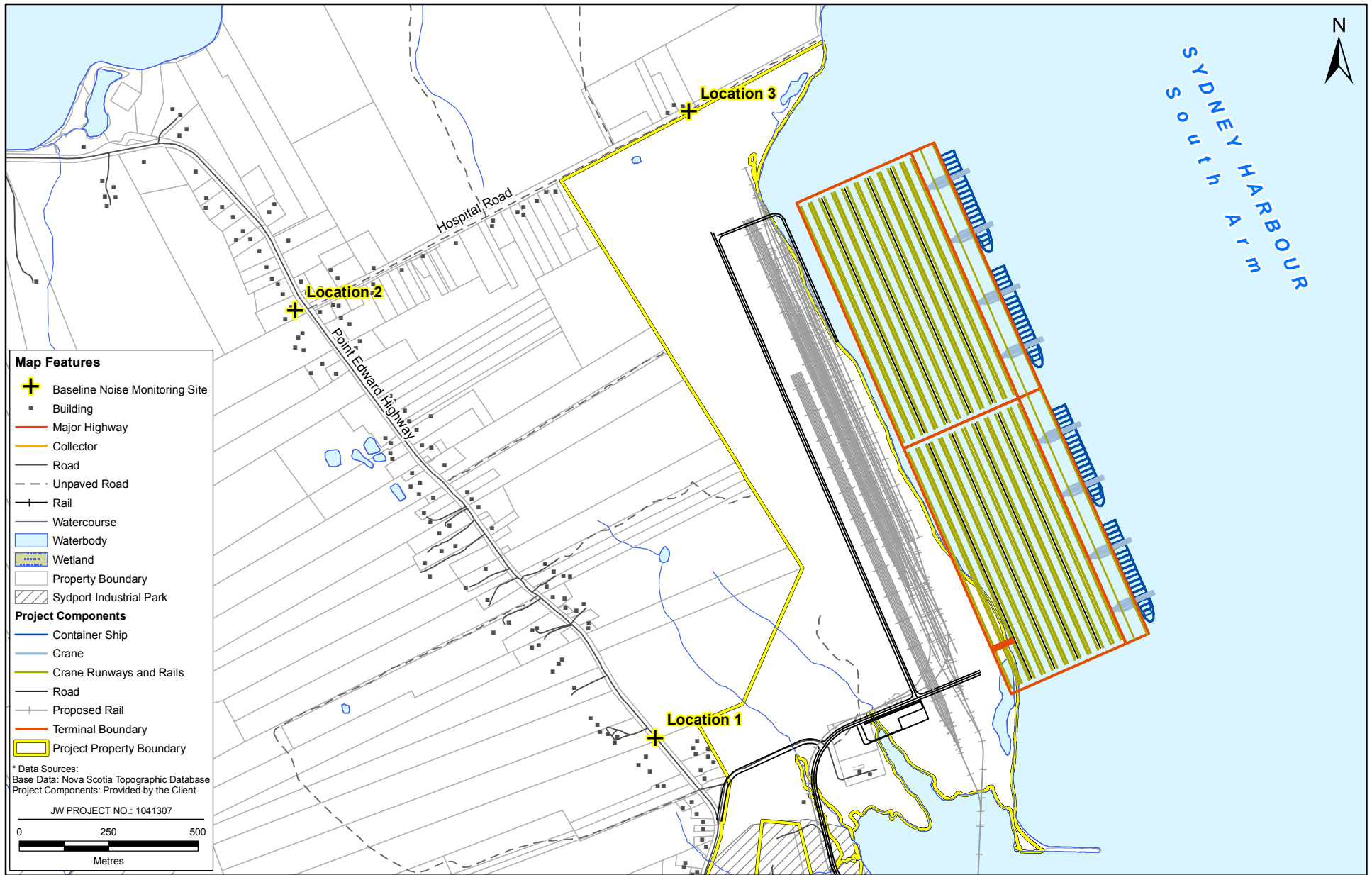


# APPENDIX C

Ambient Noise Quality



DATE: 31/10/2008

PREPARED BY: L. Kendell

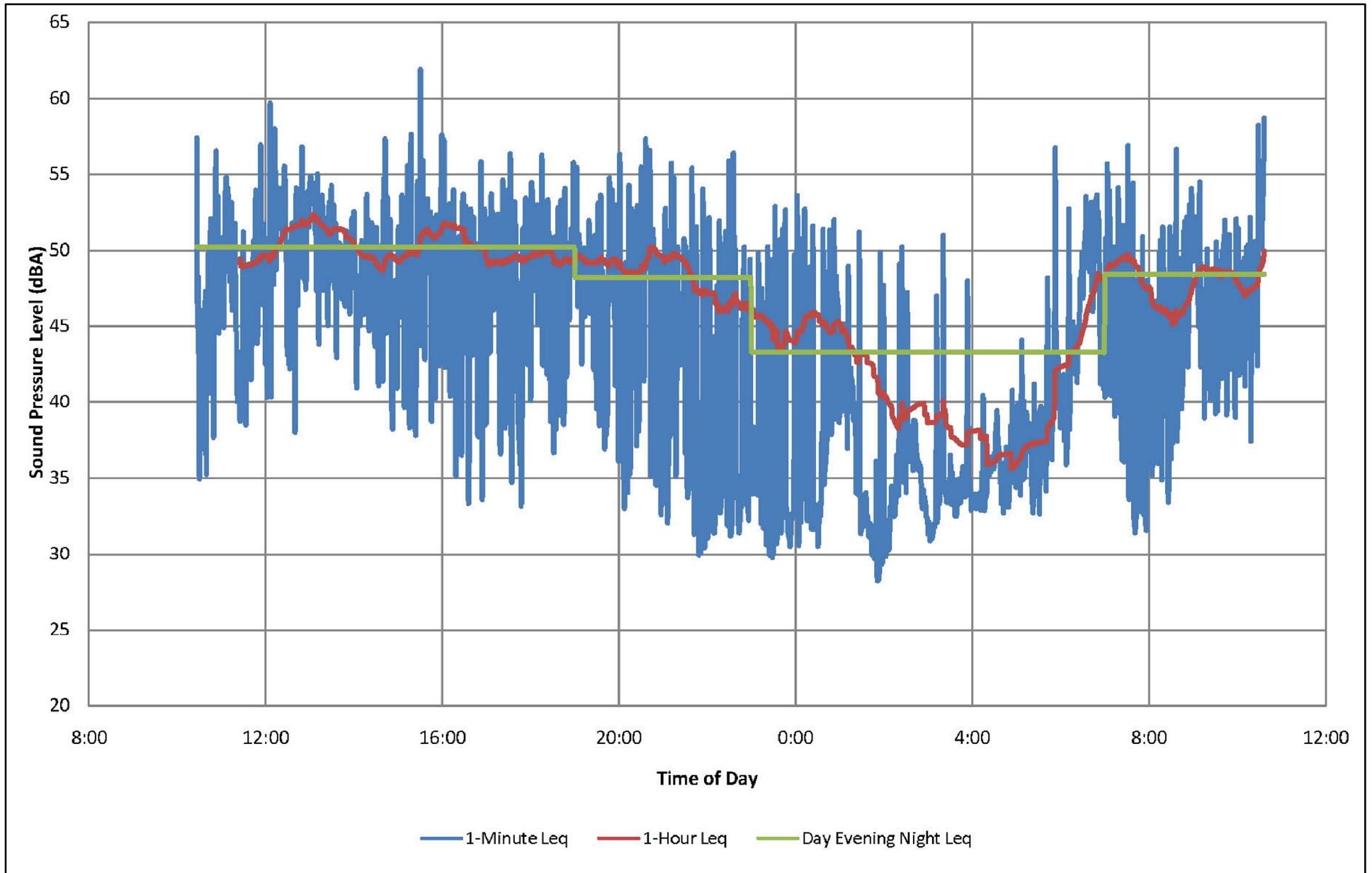
**LAURENTIAN ENERGY**

Sydney Harbour Access Channel Deepening and the Proposed Sydport Container Terminal

**Baseline Noise Monitoring Sites**

FIGURE NO: **Figure C-1**

**Jacques Whitford**



DATE: 31/10/2008

PREPARED BY: G. Asche

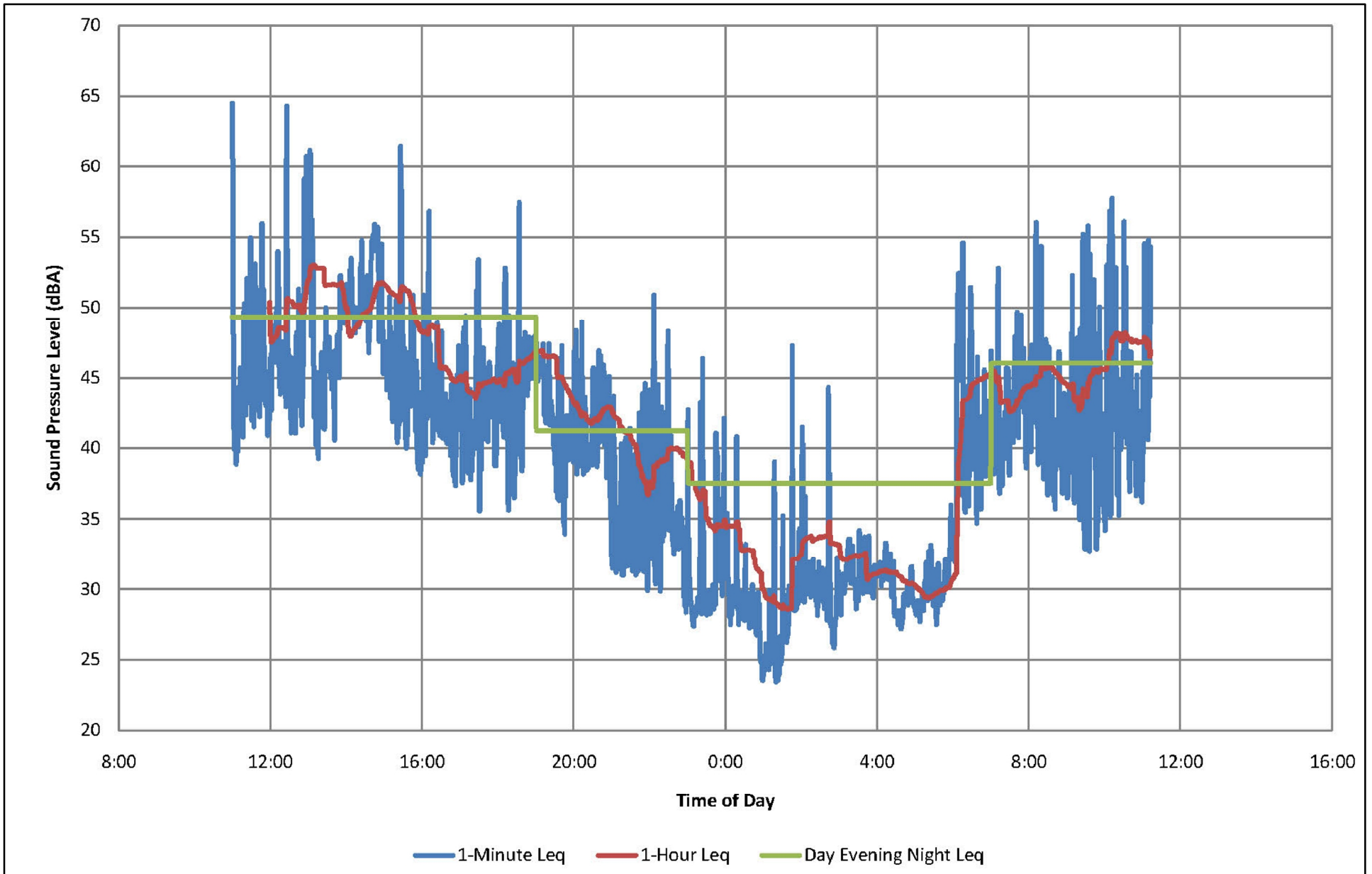
**LAURENTIAN ENERGY**

Sydney Harbour Access Channel Deepening and the Proposed Sydport Container Terminal

**24-Hour Sound Pressure Level Monitoring - Noise Monitoring  
Site 1, August 22-23, 2008**

FIGURE NO: **Figure C-2**

**Jacques Whitford**

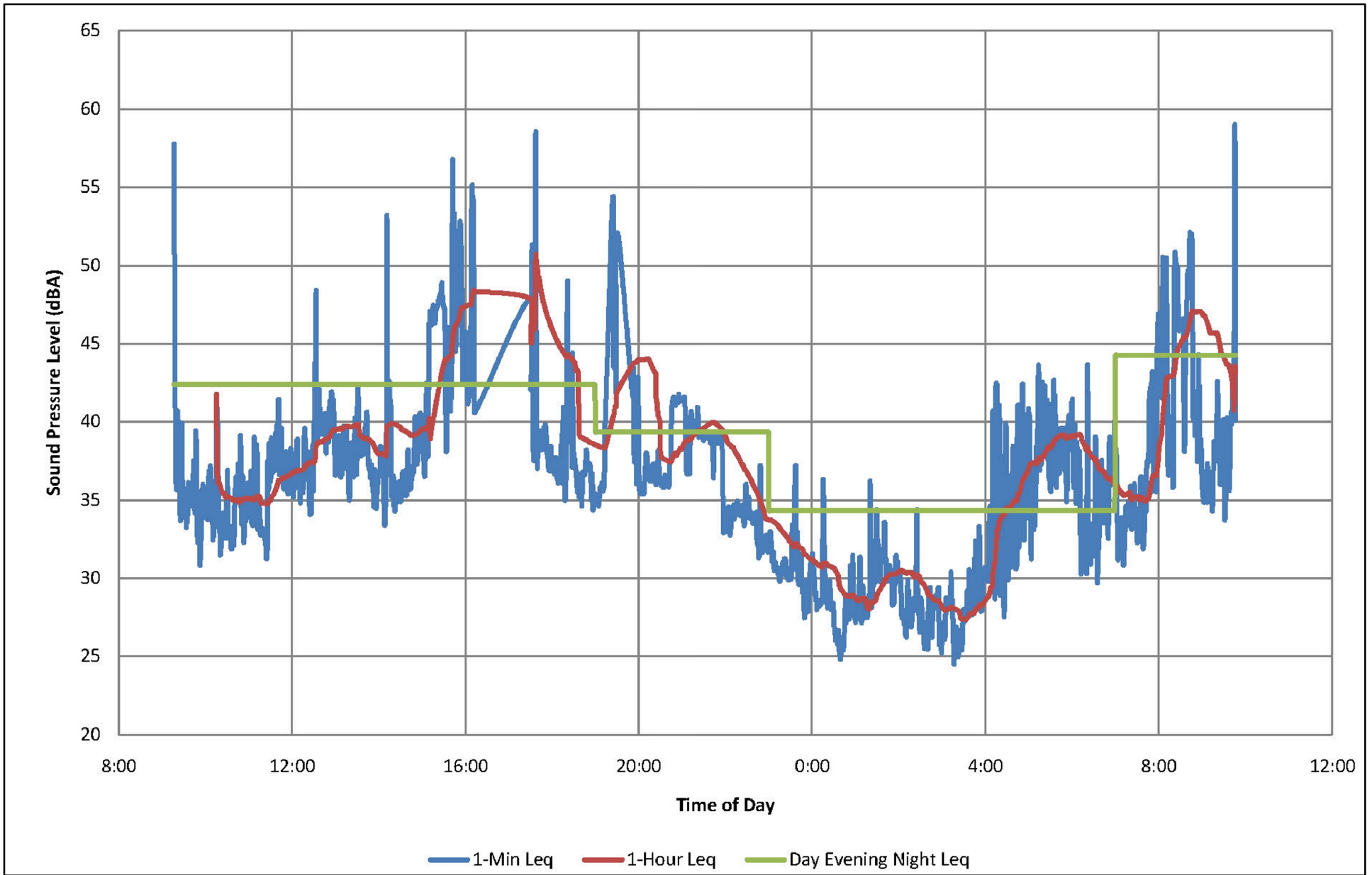



DATE: 31/10/2008  
 PREPARED BY: G. Asche

Sydney Harbour Access Channel Deepening and the Proposed Sydport Container Terminal

**24-Hour Sound Pressure Level Monitoring - Noise Monitoring**  
**Site 2, September 2, 8, & 9, 2008**


FIGURE NO: **Figure C-3**



DATE: 31/10/2008  
 PREPARED BY: G. Asche  


Sydney Harbour Access Channel Deepening and the Proposed Sydport Container Terminal

**24-Hour Sound Pressure Level Monitoring - Noise Monitoring  
 Site 3, September 5-6, 2008**

FIGURE NO:  
**Figure C-4**  




Consulting Engineers  
Environmental Scientists

## Memorandum

Jacques Whitford Building  
222 George Street  
P.O. Box 1231  
Sydney, Nova Scotia  
B1P 6J9 Canada

Tel: 902 564 1855  
Fax: 902 564 8756

Environmental Sciences  
Environmental Engineering  
Air Quality  
Hydrogeology  
Geotechnical Engineering  
Materials Engineering & Research  
Mining Engineering

---

**Attention:** John Walker & Gillian Asche

---

**From:** Tanya MacDonald – JW Sydney

---

**Date:** September 9, 2008

---

**JW Job No.** 1041307.02.

Field notes for: Noise Monitoring for Proposed Dredging and Container Terminal - Sydport, Nova Scotia. JW Job NO. 1041307.02.

### August 22, 2008 - Location No.1

1695 Point Edward Highway. Cora Dennis and Brian Sheppard.

#### Data Set #1

Field Calibration

#### Data Set #2

Start: 10:25 am August 22, 2008

Stop: 10:35 am August 23, 2008

Meter Reading: 24:10

GPS Waypoint (NAD 83 20T): 0713714 / 5115943

#### Notes:

- A) A farmer across the street used his tractor from approximately 12:45 until 3:00 pm on August 22 to cut hay. When I arrived at 10:30 am August 23, same farmer was bailing the hay with a machine
- B) Two Gun shots at approximately 1:00 am. Two deer were shot and left in the field next to Brian and Cora's house. He said the police were called in but I'm not sure if they used sirens when arrived.
- C) Photos attached: Location 1a, 1b, 1c, 1d

**September 2, 2008 - Location No.2A**

2025 Point Edward Highway. Mary and Jake Williams

Data Set #3

Field Calibration

Data Set #4

Start: 10:58 am September 2, 2008

Stop: 11:14am September 3, 2008

Meter Reading: 24:16

GPS Waypoint (NAD 83 20T): 0712705 / 5117140

Notes (Sept. 3):

- A) Started raining so the resident put a bag over the monitor at approx 4:30 to save it from getting damaged. Bag was still on the monitor when I arrived at 11:00 am the next day. Spoke to John Walker (JW). He said to try to go back and get the data from 4-11 again. I went back to same location on September 8, 2008

**September 8, 2008**

Data Set #7

Field Calibration

Data Set #8

Start: 3:20 am September 8, 2008

Stop: 11:13am September 9, 2008

Meter Reading: 19:52

Notes (Sept. 8):

At set up, Jake was mowing the lawn and likely continued to do so for a couple of hours after set up. Small set of wind chimes in the background. The sun was shining when I left but a rain cloud arrived on-site about 4pm. Jake covered the noise meter once again with a plastic bag - BUT microphone was left uncovered. This was still set up when I arrived in the morning on Sept. 9. Jake ties string around the bag so it wouldn't make noise in the wind. Looks good to me.

- B) Photos attached: Location 2a, 2b, 2c, 2d, 2e

**September 5, 2008 - Location No.3**

225 Hospital Road. Shirley and Lonnie Wells

Data Set #5

Field Calibration

Data Set #6

Start: 9:18 am Sept. 5, 2008

Stop: 9:45 am Sept. 6, 2008

Meter Reading: 24:30

GPS Waypoint (NAD 83 20T): 0713808 / 5117697

Notes:

- A) Resident mowing lawn from approx. 3:30 - 5:00 pm then again from 6:00 - 7:50pm.
- B) Photos attached: Location 3a, 3b, 3c, 3d, 3e, 3f.

Thanks

Tanya