

4.7.1.3 Discussion of Results

Flight Path Corridors

Based on observed sightings of migrant waterfowl in Falls Lake, Mockinghee Lake, Big Otter Lake, Long Bay and Card Lake, waterfowl migration appears to occur east of the Project Area, moving in a southward direction from Falls Lake to Card Lake (Drawing 4.12A).

Breeding pairs and family groups of Common Loon were observed in Lewis Lake, South Canoe Lake, North Canoe Lake and Long Bay during the surveys, suggesting that family groups fly between these lakes (Drawing 4.12A). Local waterfowl movements for American Black Duck and Mallard (*Anas platyrhynchos*) were observed between South Canoe Lake and North Canoe Lake. Similar sized groups of American Black Duck were also observed on multiple occasions within Falls Lake and Mockinghee Lake.

An important migratory corridor for passerines was noted along the Wile Settlement Road, outside of the Project Area, where mixed flocks of birds were observed on multiple occasions. A woods road located east of the Property Boundary is also used as a migratory corridor for passerine birds (Drawing 4.12B). Conditions in these two areas are favourable for migrating passerines as the bird species have a tendency to follow man-made structures such as roads and power line corridors. Nocturnal surveys revealed the general movement of night migrants is in a southwest direction. Although the routes of travel are not known, similar southern flight paths were noted for day migrating passerines

Based on passage migration surveys conducted within the Property Boundary, the flight paths of birds of prey occur predominantly along ridges in a south/southeast direction. Osprey (*Pandion haliaetus*) and Bald Eagle exhibit local flight paths between Clearwater Lake and South Canoe Lake (Drawing 4.12B).

Priority Species

Sightings of priority species during the winter and fall bird surveys are shown in Drawings 4.13A – 4.13F. These drawings indicate the location of each species with respect to proximity to the Project Area and related infrastructure, as well as habitat cover. Boreal Chickadee, Gray Jay, Bobolink and Common Loon were identified within the Project Area, predominantly within softwood habitats. In addition to these species, the following species were identified in the vicinity of the Property Boundary: Peregrine Falcon, Rusty Blackbird, Eastern Bluebird, Northern Goshawk, Canada Warbler, Common Nighthawk and Bicknell's Thrush. The majority of these species were sighted in softwood or mixed woodlands, with the exception of Peregrine Falcon and Northern Goshawk, which were sighted in a clear-cut.

Notes:

- Reference: Nova Scotia Property Records, 1:10,000 digital topographic mapping by Nova Scotia Geomatics Centre, Nova Scotia Department of Natural Resources (NS DNR) Forest Inventory.
- Projection: NAD83(CSRS), UTM Zone 20 North.

Legend:

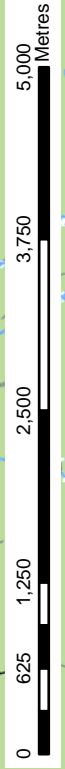
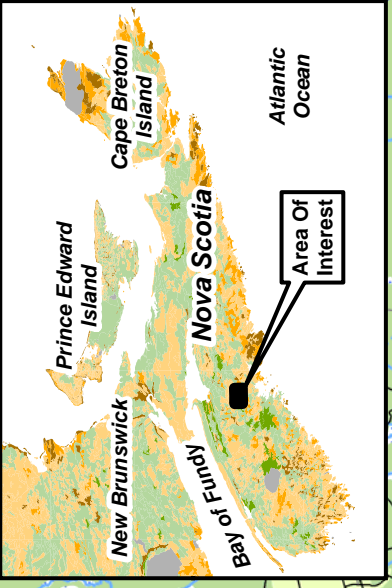
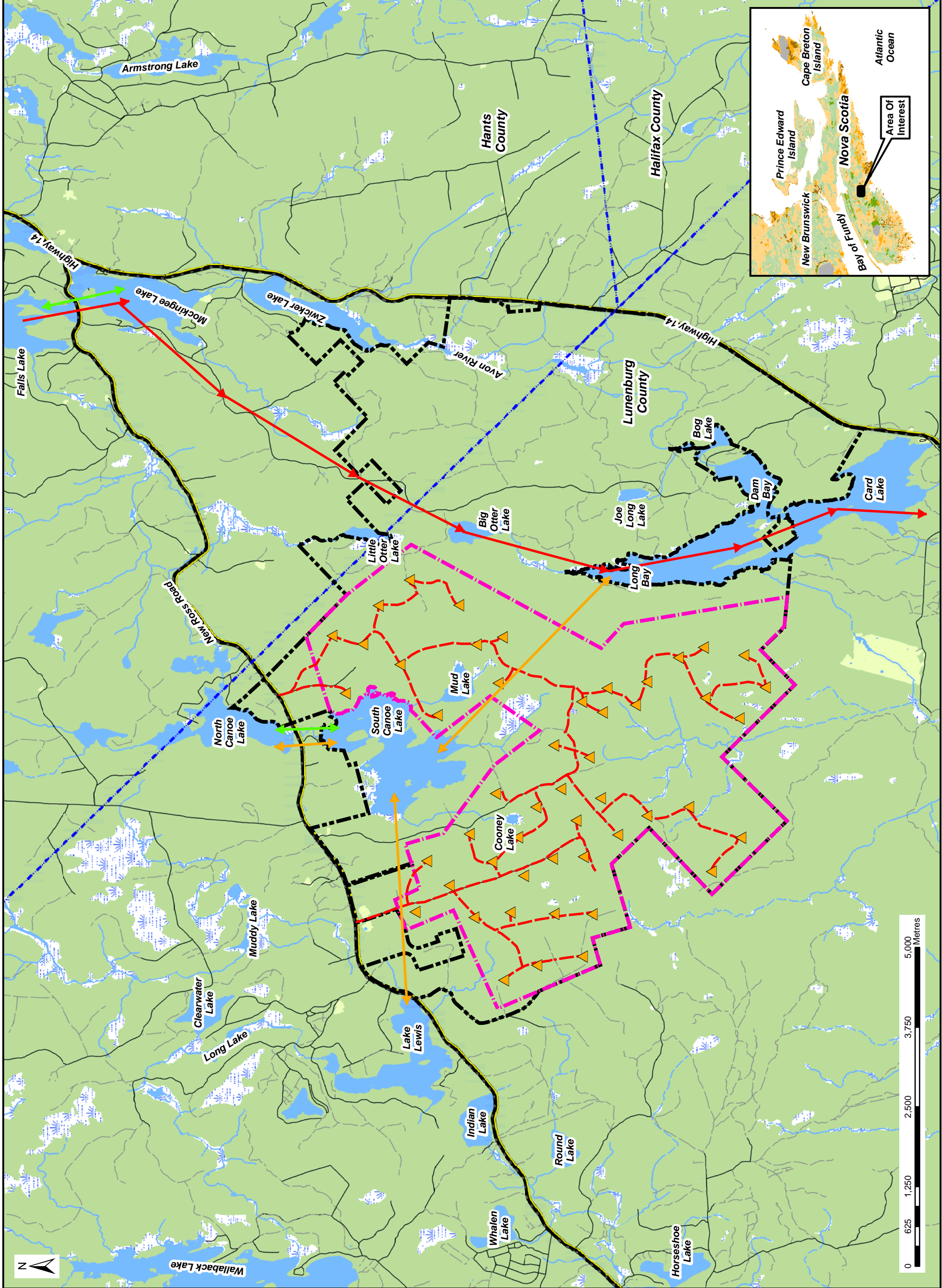
- Local Waterfowl Movements
- Waterfowl Migration
- Common Loon Flightpaths
- Proposed Turbines
- Proposed Roads
- Project Area
- Property Boundary
- County Boundary
- Major Roads
- Roads
- Access Roads / Trails
- Large Buildings
- Mapped Stream
- Indefinite Stream
- Mapped Swamp
- Water Bodies

Common Loon and Waterfowl Flight Paths






Date:	May 2012	Project #:	12-4361
Scale:	1:55,000	Sheet:	4.12A
Drawn By:	G. Gregory		
Checked By:	M. Smith		



Notes:

- Reference: Nova Scotia Property Records, 1:10,000 digital topographic mapping by Nova Scotia Geomatics Centre, Nova Scotia Department of Natural Resources (NS DNR) Forest Inventory.
- Projection: NAD83(CSRS), UTM Zone 20 North.

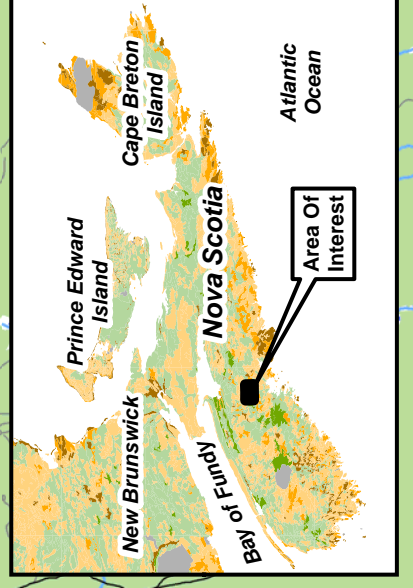
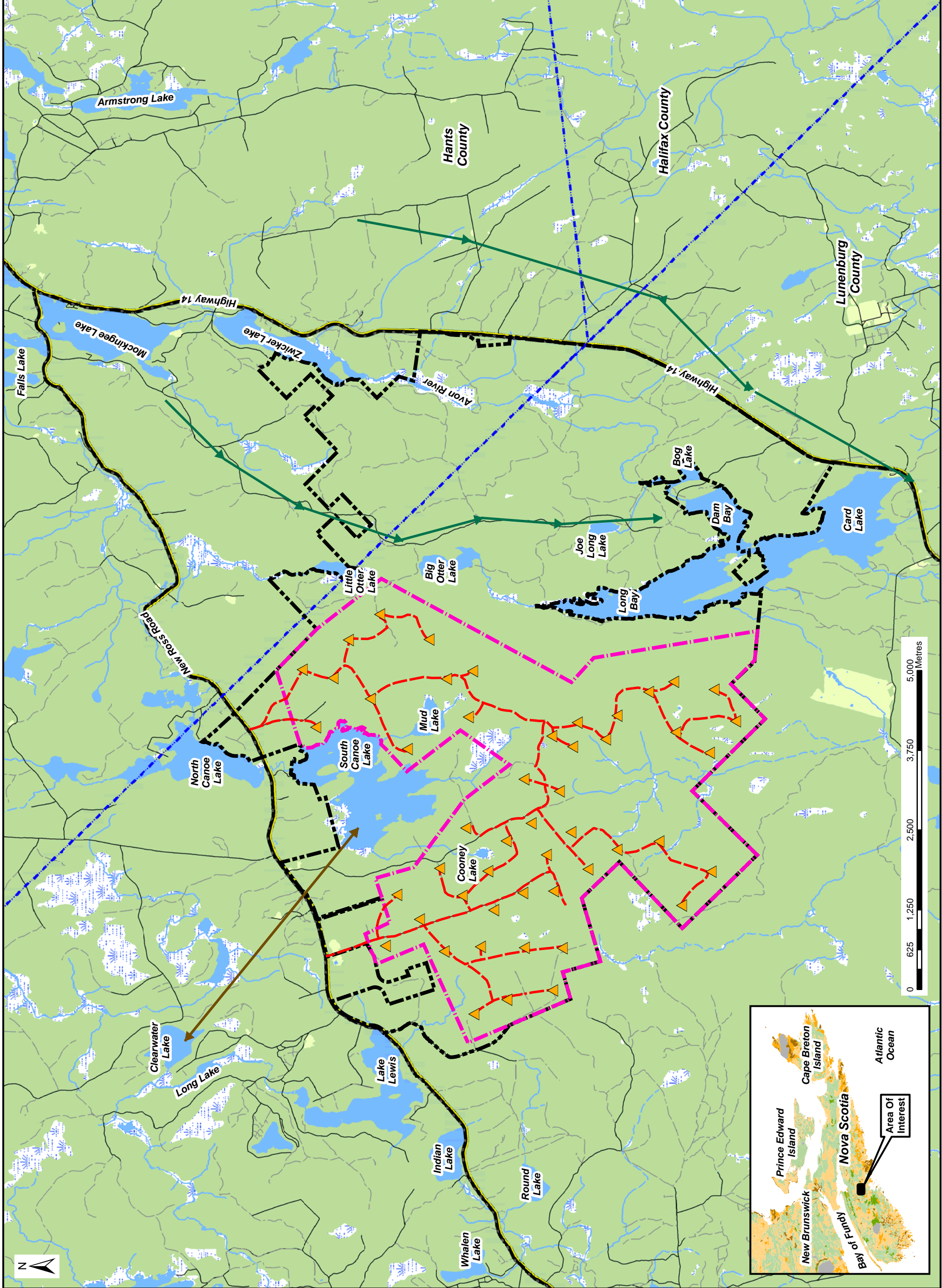
Legend:

- Flocking Species Migration Flyway
- Birds of Prey Local Flight Paths
- Proposed Turbines
- Proposed Roads
- Project Area
- Property Boundary
- County Boundary
- Major Roads
- Roads
- Access Roads / Trails
- Large Buildings
- Mapped Stream
- Indefinite Stream
- Mapped Swamp
- Water Bodies

Flocking Species and Birds of Prey Flight Paths



Date:	May 2012	Project #:	12-4361
Scale:	1:55,000	Sheet:	4.12B
Drawn By:	G. Gregory		
Checked By:	M. Smith		



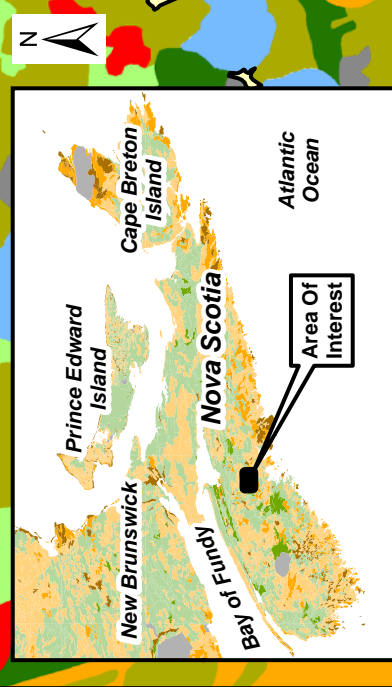
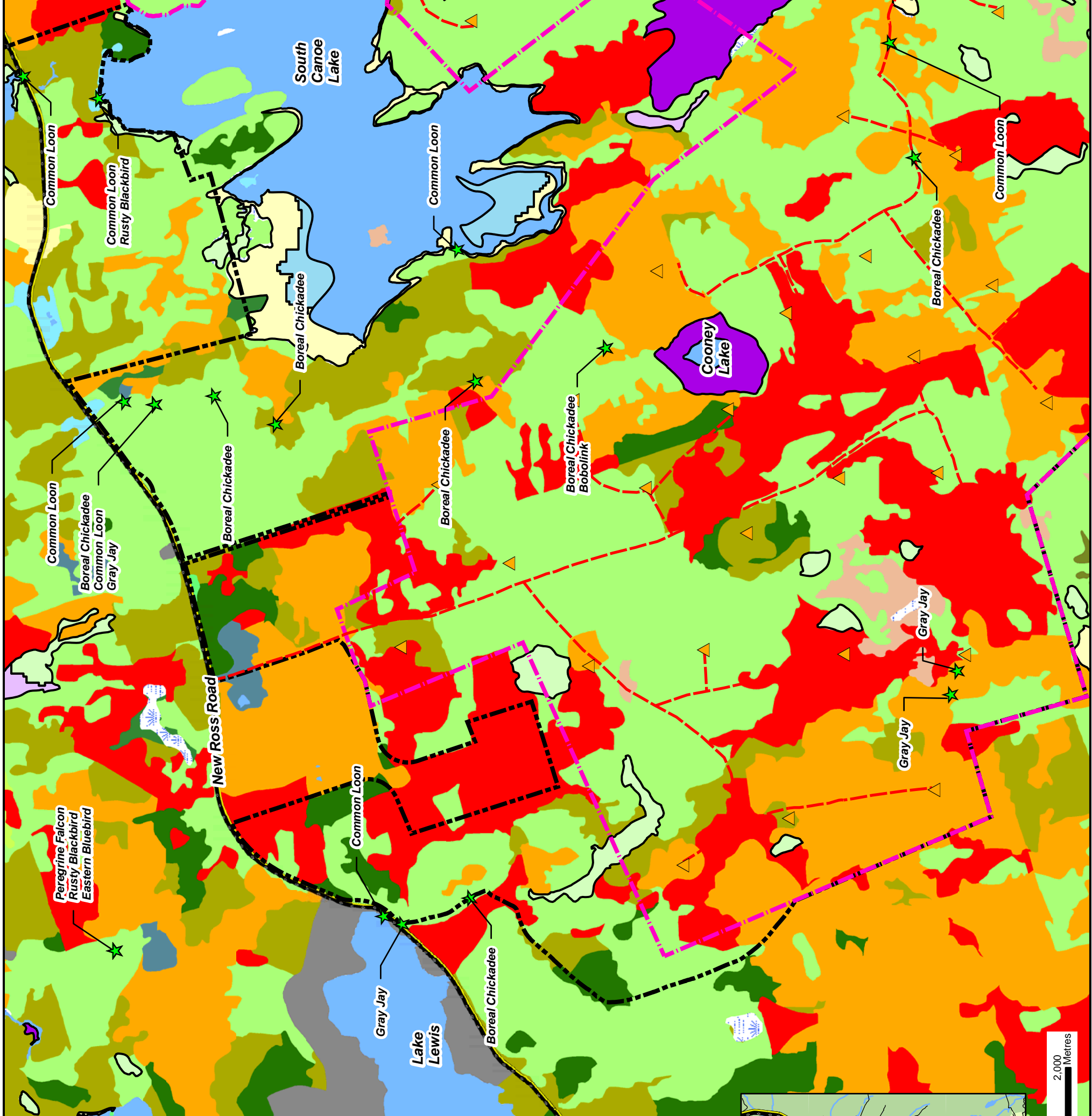
Notes:

- Reference: NS Forest Inventory by NSDNR, 1:10,000 digital topo mapping by Nova Scotia Geomatics Centre.
- Projection: NAD83(CSRS), UTM Zone 20 North.

Priority Species Sightings



Date:	May 2012	Project #:	12-4361
Scale:	1:20,000	Sheet:	4.13A
Drawn By:	G. Gregory	Checked By:	M. Smith



Legend:

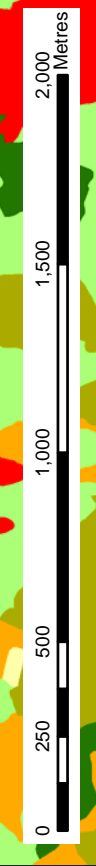
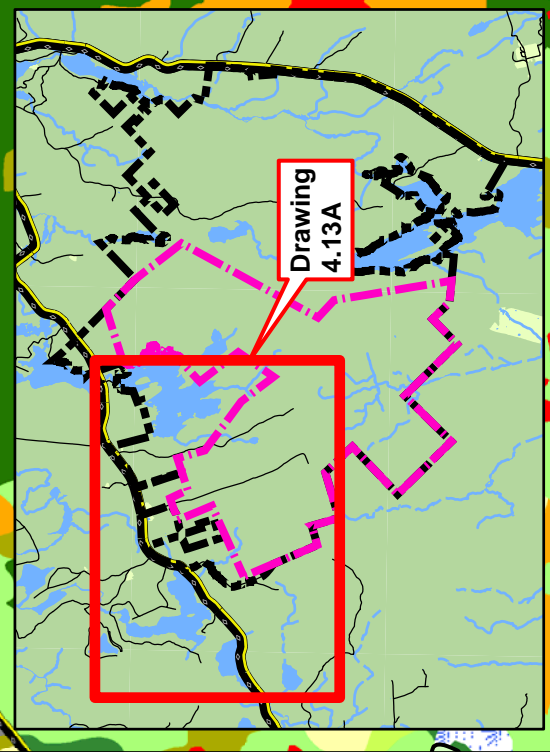
- Priority Species Location (Green star)
- Proposed Turbines (Yellow triangle)
- Proposed Roads (Red dashed line)
- Project Area (Pink dashed line)
- Property Boundary (Black dashed line)
- Major Roads (Black solid line)
- Roads (Black solid line)
- Access Roads / Trails (Black dashed line)
- Mapped Swamp (Blue wavy line)
- Water Bodies (Blue solid area)

NS DNR Wetland Inventory

- Bog or Fen (Purple)
- Fen (Light purple)
- Marsh (Light green)
- Salt Marsh (Light blue)
- Swamp (Light green)
- Water (Light blue)
- Softwood (Light green)
- Mixedwood (Light green)
- Hardwood (Dark green)

Forest Classification

- Unclassified Forest (Light green)
- Brush (Orange)
- Alders <75% (Light green)
- Alders >75% (Dark green)
- Clear Cut (Red)
- Partial Cut-over (Light blue)
- Rock Barren (Brown)
- Barren (Light brown)
- Agriculture (Yellow)
- Urban (Grey)
- Other (Light blue)
- Gravel Pit (Dark blue)
- Road Corridor (Dark blue)



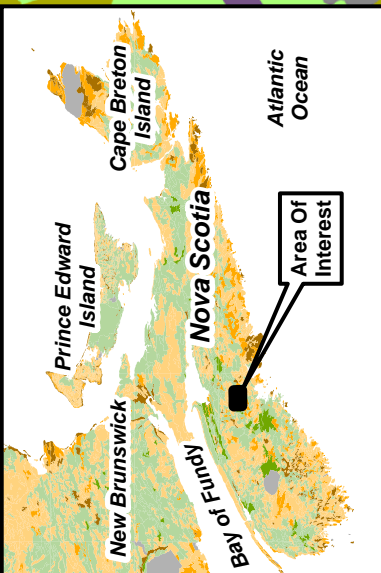
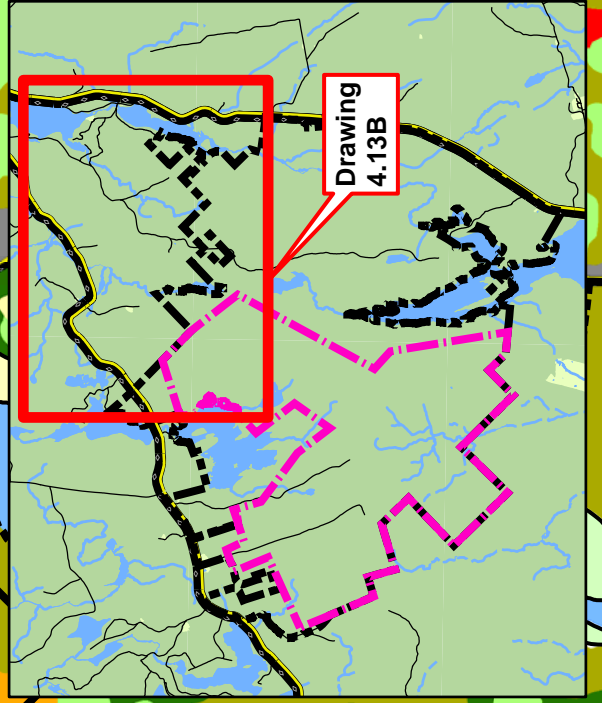
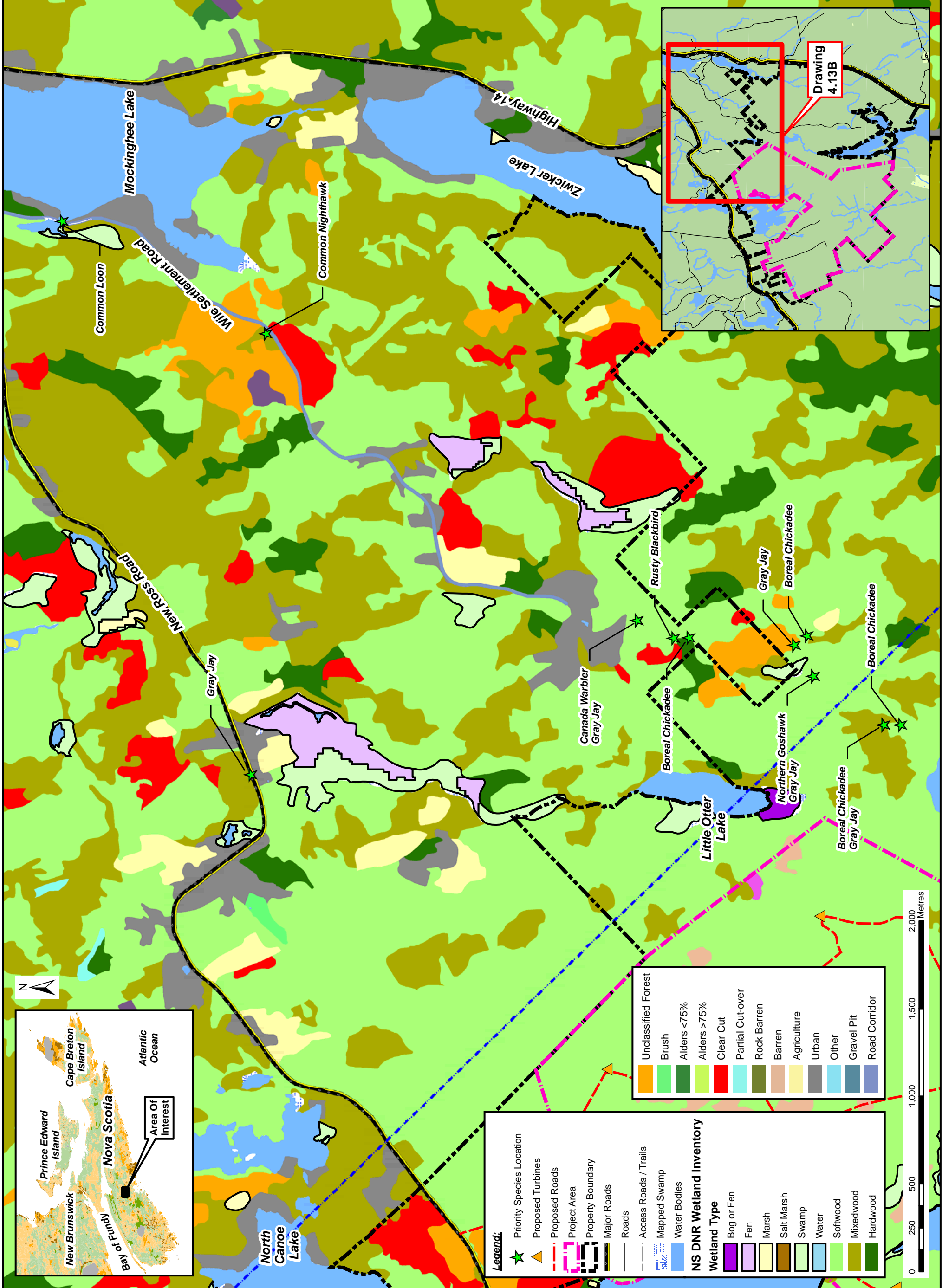
Notes:

1. Reference: NS Forest Inventory by NSDNR, 1:10,000 digital topographic mapping by Nova Scotia Geomatics Centre.
2. Projection: NAD83(CSRS), UTM Zone 20 North.

Priority Species Sightings



Date:	May 2012	Project #:	12-4361
Scale:	1:20,000	Sheet:	4.13B
Drawn By:	G. Gregory		
Checked By:	M. Smith		



Legend:

- Priority Species Location (Green star)
- Proposed Turbines (Yellow triangle)
- Proposed Roads (Red dashed line)
- Project Area (Pink dashed line)
- Property Boundary (Black dashed line)
- Major Roads (Black solid line)
- Roads (Black solid line)
- Access Roads / Trails (Black dashed line)
- Mapped Swamp (Blue wavy line)
- Water Bodies (Blue solid area)

NS DNR Wetland Inventory

- Bog or Fen (Purple)
- Fen (Light purple)
- Marsh (Light green)
- Salt Marsh (Brown)
- Swamp (Light blue)
- Water (Blue)
- Softwood (Light green)
- Mixedwood (Yellow-green)
- Hardwood (Dark green)

- Unclassified Forest (Orange)
- Brush (Light green)
- Alders <75% (Dark green)
- Alders >75% (Light green)
- Clear Cut (Red)
- Partial Cut-over (Light blue)
- Rock Barren (Dark green)
- Barren (Brown)
- Agriculture (Yellow)
- Urban (Grey)
- Other (Light blue)
- Gravel Pit (Dark blue)
- Road Corridor (Dark blue)

