

APPENDIX K
COMMUNITY ENGAGEMENT MATERIALS



Proposed Wind Energy Project

Newsletter - September 2013

WORKING WITH YOU

We are committed to working closely with the community throughout the life of the project. Community members will play leading roles with early activities including:

- Providing key information about the local area
- Naming the project and designing the logo
- Nominations for the Community Liaison Committee (CLC)

The CLC will be made up of volunteers. Members are responsible for the ongoing consideration of local interests and act as a link between the development team and the community at large. If you are interested in being part of the CLC or know someone who is a good candidate, please contact us by phone or email, or join us at our upcoming open house.

FIRST OPEN HOUSE:

Come and join us at our first open house session.

When: Tuesday, October 1st from
6:30 pm – 9:00 pm

Where: Ellershouse Community
Hall, 429 Ellershouse Road,
Ellershouse NS

CONTACT US

If you have questions prior to the open house, do not hesitate to contact us:

Mary-Frances Lynch
Minas Basin Pulp and Power
902-306-1449

maryfrances.lynch@minasenergy.com

Visit our project website at
www.areans.ca

What is being proposed?

Several Nova Scotia municipal electric utilities are proposing to develop a small wind energy project in West Hants near Ellershouse. Pending approvals from Nova Scotia Environment and the Municipality of the District of West Hants, the project could have 7 wind turbine generators. Construction would start mid-2014 and electricity could be produced for the municipalities by late 2015.

Who is involved?

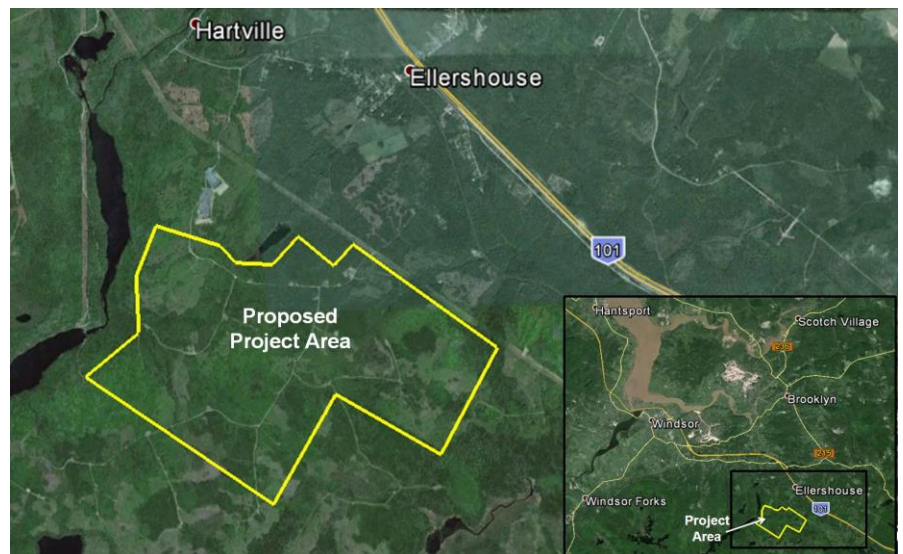
The utilities have created the Alternative Resource Energy Authority (AREA). AREA will own the project and has commissioned Minas Basin Pulp and Power Company Limited to develop the project on its behalf. Staff at Minas have significant experience working on energy projects with local communities throughout the Maritimes.

Required approvals

This project is subject to extensive community engagement, a provincial Environmental Assessment and a municipal Development Agreement process. Studies and research for the Environmental Assessment must demonstrate that impacts on residents, wildlife and the environment have been minimized. The Development Agreement process ensures the project complies with local planning strategies.

Where will the turbines be located?

The project boundary is illustrated below, south of the existing transmission line and east of Panuke Lake.





Why is this project needed?

The government of Nova Scotia has set renewable electricity targets of 25% for 2015 and 40% for 2020. This project will help municipal utilities achieve this goal. The wind farm will be a municipally owned asset, generating clean electricity and reducing dependence on fossil fuels.

Why this location?

Immediately east of Panuke Lake is an ideal location for wind energy, first and foremost because of its reliable wind resources. Preliminary work also suggests that this is an environmentally suitable location. These factors, combined with a very strong electrical grid connection, make this a great site for a small municipal wind farm.

What does this mean for our community?

Wind farms bring many benefits to rural communities in both the short and long term. The development team is committed to employing local resources wherever possible. This project will enhance the community's economy, create a greener energy supply and

increase opportunities for local employment and education. The project also provides residents with opportunities to engage with Minas on local energy issues.

The wind farm is compatible with existing local activities such as agriculture, forestry and recreation. The construction work will increase demand for local materials, food and lodging services. The wind farm will also provide additional tax revenue to West Hants.

Minas is open to suggestions from the community about the benefits which you would like to see arising from the project. Please contact us or visit us at the open house to share your ideas!

Stakeholder Engagement Process



OUR COMMITMENT TO COMMUNICATION

Input from the community is a vital part of this project. The coming months will include:

- Newsletters
- Open houses
- Community Liaison Committee
- One-on-one visits with residents
- Project website at www.areans.ca

For up-to-date information, you can access our website at www.areans.ca. If you have any questions or would like to meet with project team members, please contact Mary-Frances Lynch by phone or email at 902-306-1449 or maryfrances.lynch@minasenergy.com.

FIRST OPEN HOUSE:

Tuesday, October 1st, 2013

6:30 pm – 9:00 pm

Ellershouse Community Hall

429 Ellershouse Road, Ellershouse NS



Proposed Wind Energy Project

Newsletter - November 2013

FIELD TRIP TO THE KAIZER MEADOW WIND TURBINE

Interested in experiencing a turbine up-close? We are organizing a field trip to the Kaizer Meadow Wind Turbine on Saturday November 30th (rain date December 7) leaving the Ellershouse Community Hall at 1pm and returning by 4pm. This is a great opportunity to answer any questions you have about turbines.



Kaizer Meadow is a 2MW turbine next to the Kaizer Meadow Landfill on Hwy 14 in the Municipality of Chester. If interested, please contact Mary Frances at maryfrances.lynch@minasenergy.com or (902) 306-1449 by November 27 to reserve your spot. Transportation will be provided to and from the site.

COMMUNITY LIAISON COMMITTEE

Following the open-house, a Community Liaison Committee has been established for the project. Committee members are responsible for representing local interests and act as a link between the development team and the community.

CLC members include: Shirley Banfield, Dave Blanchard, Weiner Brown, Myles Cornish, Yvonne Davison, Greg McNeil, Dougie Ross and Steve Sharpe.

For more information on the Community Liaison Committee and the project, visit our website at:

<http://www.areans.ca/project.html>

What is being proposed?

Nova Scotia municipal electric utilities are proposing to develop a small wind energy project in West Hants near Ellershouse. The utilities have created the Alternative Resource Energy Authority who will own the project and have commissioned Minas Basin Pulp and Power to develop the project.

Pending approvals from Nova Scotia Environment and the Municipality of West Hants, the project could have 7 wind turbine generators. Construction would start mid-2014 and electricity could be produced by late 2015.

Project Update - Meeting Your Community...

Over the past few weeks, we have been meeting with the community to discuss the project.

Open House

An open house was held on October 1 and was attended by 75 people. Residents chatted with project team members about the proposed wind project and learned about the Environmental Assessment process and studies, health studies, visual assessments, the Community Liaison Committee, project benefits, etc.



Meeting with Recreationists

A meeting was held on October 17 to discuss current recreational use by snowmobilers, ATVers, hunters and cottagers and continued access to the site. The development team is currently engaging with the project insurer to determine a solution that would ensure continued use of the site by the various groups.

Community Liaison Committee (CLC) Meetings

The CLC met in October and November and discussed the following topics:

- CLC guidelines
- Environmental Assessment studies
- Health and Safety concerns - sound, infrasound and shadow flicker
- Direct benefits to Ellershouse

The CLC will be meeting on a frequent basis and all are welcome to attend. Please visit the website (www.areans.ca) to learn about upcoming meetings.

Frequently Asked Questions

Here are common questions we have heard from you over the past few weeks:



1. What is the project schedule?

We are currently completing Environmental Assessment (EA) studies for the site and plan to submit the report to Nova Scotia Environment mid-December. Once the EA has been approved, a Development Agreement process with the Municipality of West Hants would be launched (likely February 2014). Pending Environmental Assessment and Development Agreement approval, construction would start mid-2014 and electricity would be produced for the municipalities by late 2015.

2. What is the Environmental Assessment process?

The purpose of the Environmental Assessment (EA) is to identify environmental effects at an early stage in project development and help the project minimize the effects on the environment. The EA is evaluated by Nova Scotia Environment and other government departments and is open to public comment. The Nova Scotia Minister will only approve the EA once these conditions are satisfied.

The process includes the following steps:

We will post information on our website and send information to our Community Liaison Committee and email list when the EA has been submitted to Nova Scotia Environment.



3. What route will be used to deliver turbine equipment to the project site and will roads need to be modified?

We will complete a transportation plan for the project in cooperation with the Dept. of Transportation Infrastructure and Renewal to ensure it meets their standards. A preliminary study indicates that turbines will likely be delivered using the Hartville and Quarry Roads. At certain locations, turning radii will need to be widened and some roads on the project site will need to be modified. We will work with the community and the turbine manufacturer to ensure that all considerations are taken into account when planning the final route.

4. What type of access will be granted to snowmobilers, ATVers, hunters who currently use the project site?

We have met with a small group of snowmobilers, ATVers, hunters and cottagers and understand that the site is frequently used by recreationists. To facilitate continued site access, we are meeting with the project insurers to discuss conditions under which main access roads will remain accessible and only side roads to the turbines themselves would be gated.

5. What are the expected sound levels from the turbines? Could it be harmful to my health?

Nova Scotia Environment's standard sound level is 40dBA outside a home and is meant to be protective of human health. The sound study results for this project show that most residences fall below 35 dBA. To put it into perspective, 40dBA is equivalent to the sound of a quiet library outside your home.

6. Are there plans to increase the number of turbines or expand the project at a later date?

There are currently no future plans to expand the project.

To read more Frequently Asked Questions, please visit our website at www.areans.ca/projectfaqs.html

PLEASE CONTACT US WITH YOUR QUESTIONS AT:

Mary-Frances Lynch

Minas Basin Pulp and Power

902-306-1449 - maryfrances.lynch@minasenergy.com

Proposed Wind Energy Project



A group of municipal electric utilities have come together to establish their own supply of renewable electricity. Together, they are called the **Alternative Resource Energy Authority (AREA)**. AREA will own the project and has commissioned Minas Basin Pulp and Power to develop the project on its behalf. Pending approvals from the Nova Scotia Department of Environment and the Municipal District of West Hants, the project could have 7 wind turbine generators.

Alternative
RESOURCE ENERGY AUTHORITY

When could construction begin?

Construction could start mid-2014 and electricity could be produced for the municipalities by late 2015.



Where will the project be located?

The project boundary is south of the existing transmission line and east of Panuke Lake near Ellershouse.

YOUR INPUT IS IMPORTANT TO US

You can contact Mary-Frances at 902-306-1449, send an email to maryfrances.lynch@minasenergy.com, or visit our website at www.areans.ca.

Environmental Assessment Process



ENVIRONMENTAL ASSESSMENT:

- Is required by Nova Scotia Environment to ensure that a project's environment and safety effects are minimized.
- Identifies environmental effects at an early stage in project development.
- Public consultation is an integral part of this process - community is invited to comment on the Environmental Assessment during the review period.
- Reviewed by Nova Scotia Environment and other relevant government agencies.
- Nova Scotia Minister of the Environment only provides approval once satisfied that environmental and safety effects will be minimized.



BASELINE STUDIES:

- Avifauna (Birds and Bats)
- General Wildlife
- Plants
- Wetlands
- Watercourses and Fish Habitat
- Groundwater and Geology
- Sound & Shadow Flicker
- Visual Aesthetics
- Cultural and Heritage Resources
- Socio-economic Conditions

Visual Assessment

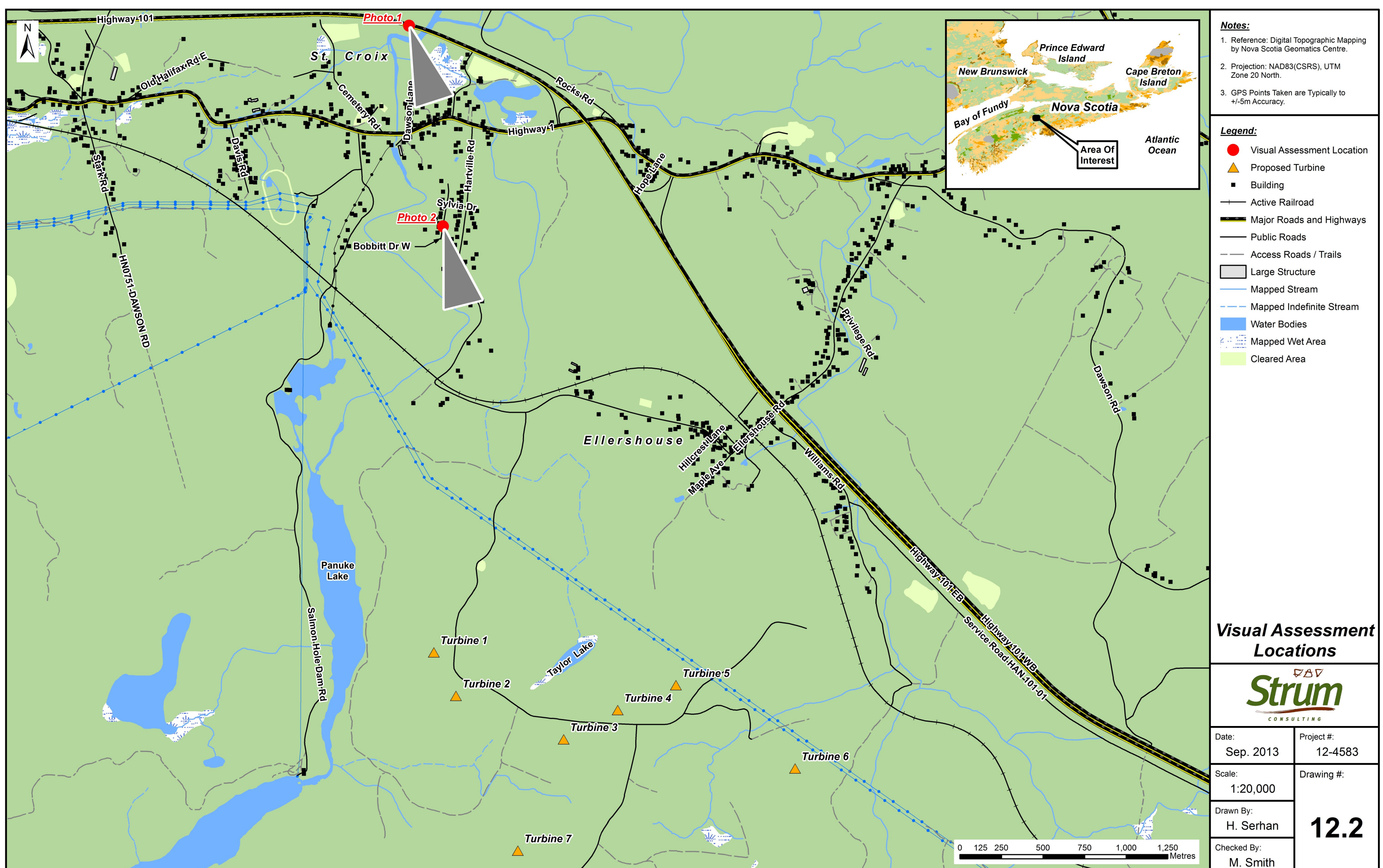


Photo 1—Looking southeast into the project site from Highway 101.

Here are two photomontages showing what the wind farm will look like from particular vantage points in the local area. A photomontage takes into account turbine dimensions, turbine locations, local topography, photo location and direction.



Photo 2— Looking southeast into the project site from Bobbitt Drive.



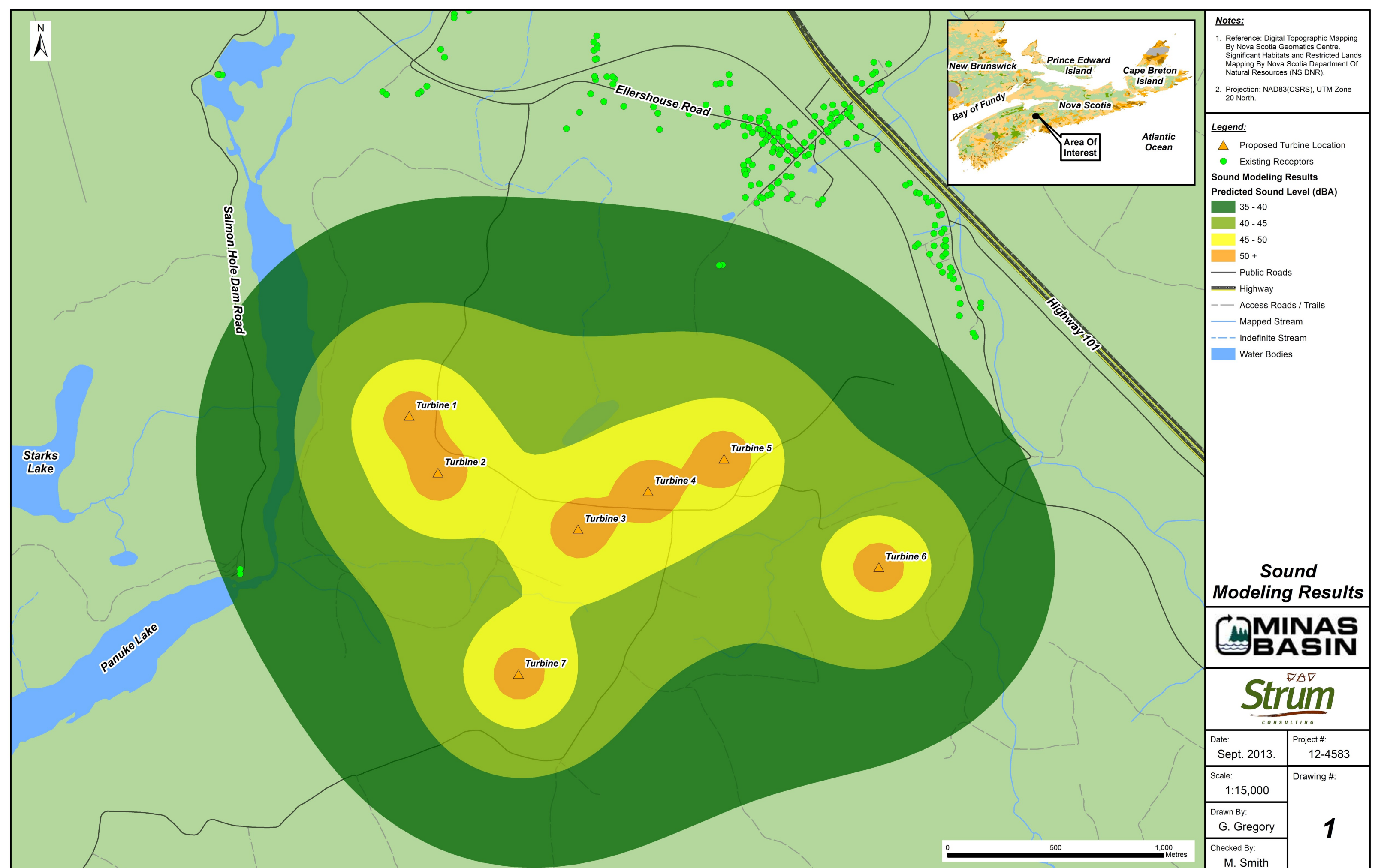
Environment, Health & Safety



SOUND MODELING

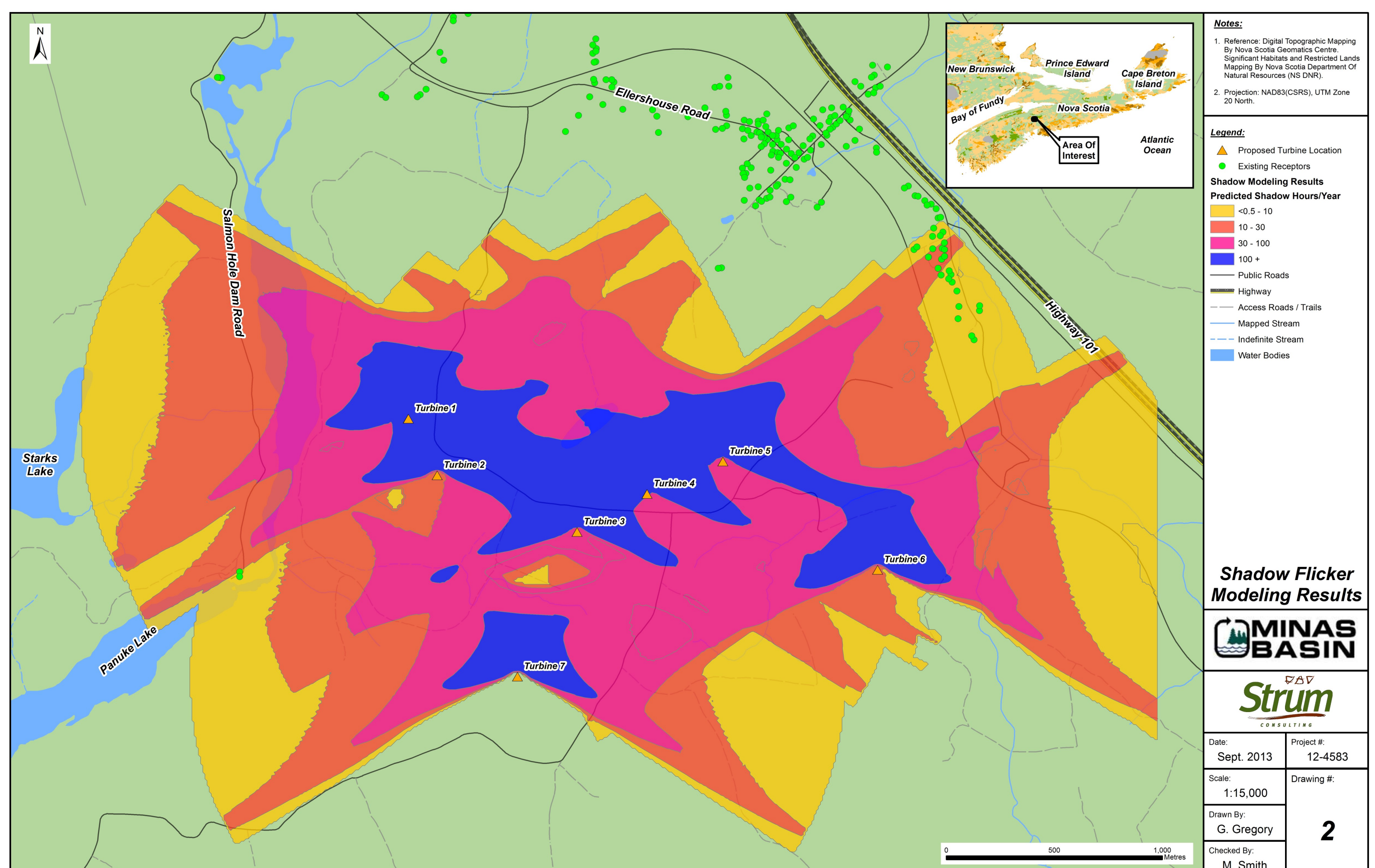
- Nova Scotia Environment requires sound level of no more than 40dBA outside home.
- 40 dBA is equivalent to the sound of a quiet library.
- Modeling results show that all residences fall below 40dBA, most below 35dBA.
- Sound monitoring will be conducted pre and post-construction.

Source	Sound Pressure Levels
Freight train	70 dBA
Highway	70 dBA
Wind in trees	55 dBA
Average home	50 dBA



SHADOW FLICKER—moving shadows cast by rotating turbine blades.

- Occurs under very specific conditions.
- Government standard max 30hrs/year and 30mins/day.
- Model shows all residences in compliance with standard, most below 10hrs/year.



Wind Energy Benefits



ENERGY

- ⇒ Nova Scotia has set renewable electricity targets of 25% by 2015 and 40% by 2020. This project will help municipal utilities achieve this goal.
- ⇒ Wind is a valuable emission-free resource; nature provides it and it is 100% renewable.

ECONOMIC DEVELOPMENT

- ⇒ The project will enhance the community's economic development by providing additional tax revenue to West Hants (between \$60,000-\$100,000 annually).
- ⇒ The project will also create construction jobs and increase demand for local supplies and services, such as food and lodging.

EDUCATION

- ⇒ A renewable energy project in a community allows residents to gain a detailed understanding of how wind turbine generators work and how wind power can help us reduce our reliance for fossil fuels.



Project team members are available to answer your questions.

Community Engagement



COMMITMENT TO ENGAGE

We are committed to listening to and engaging the community.

Community members will play leading roles with early activities including:

- Providing key information about the local area
- Helping develop a list of local businesses and services
- Naming the project and designing the logo
- Nominations for the Community Liaison Committee



We are currently recruiting members for the Community Liaison Committee

The Community Liaison Committee:

⇒ Serves as a link between the community and the development team

⇒ Brings local ideas, concerns, and interests to the table

⇒ Represents landowners, residents, business-people, and community groups

If you are interested in joining the CLC or know of a good candidate, please contact Mary-Frances Lynch at 902-306-1449 or maryfrances.lynch@minasenergy.com.

Visit our website to learn more at www.areans.ca

Alternative Resource Energy Authority Wind Project

www.areans.ca

Email: maryfrances.lynch@minasenergy.com

Mary-Frances Lynch
Minas Basin Pulp and Power – Minas Energy
53 Prince Street, Hantsport, NS
B0P 1P0

November 14, 2013

Nova Scotia Office of Aboriginal Affairs

5251 Duke St., 5th Floor
PO Box 1617
Halifax, NS B3J 2Y3
Canada

Attention: Beata Dera, Senior Consultation Advisor

Reference: AREA Wind Project – Notice of Proposed Project

To whom it may concern,

We wish to inform you of a proposed wind energy project. The project will be owned by a group of Municipal Utilities that have created the Alternative Resource Energy Authority (AREA). AREA has commissioned Minas Basin Pulp and Power to develop the project on their behalf. The wind project is proposed to be located in the Municipality of West Hants near the community of Ellershouse (see map attached) and will include seven wind turbines with a nameplate capacity of 16MW. A Class 1 Environmental Assessment is currently underway and public consultation program is ongoing.

Please do not hesitate to contact us should you require further information, or if you wish to participate in our assessment process. Inquiries can be made to Mary-Frances Lynch at maryfrances.lynch@minasenergy.com or (902) 306-1449. To learn more about the project, you can also visit our website at <http://www.areans.ca/project.html>.

Sincerely yours,

Mary-Frances Lynch
Community Relations Manager
Minas Basin Pulp and Power – Minas Energy

Hartville

Ellershouse

101

Proposed
Project Area

