

APPENDIX F4
AMEC 2010 and 2014 Wetland Baseline Survey Report

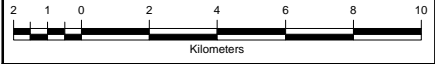

FIGURES

Black Point Quarry Project
Guysborough County, NS
SLR Project No.: 210.05913.00000

FIGURES

Path: P:\5300 PROJECTS\2014\TV144003 - Black Point Quarry EA Support\CAD\Wetland Field Report Figures\Figure 1 - Project Location.mxd User: derrick.schulz Date: 9/24/2014

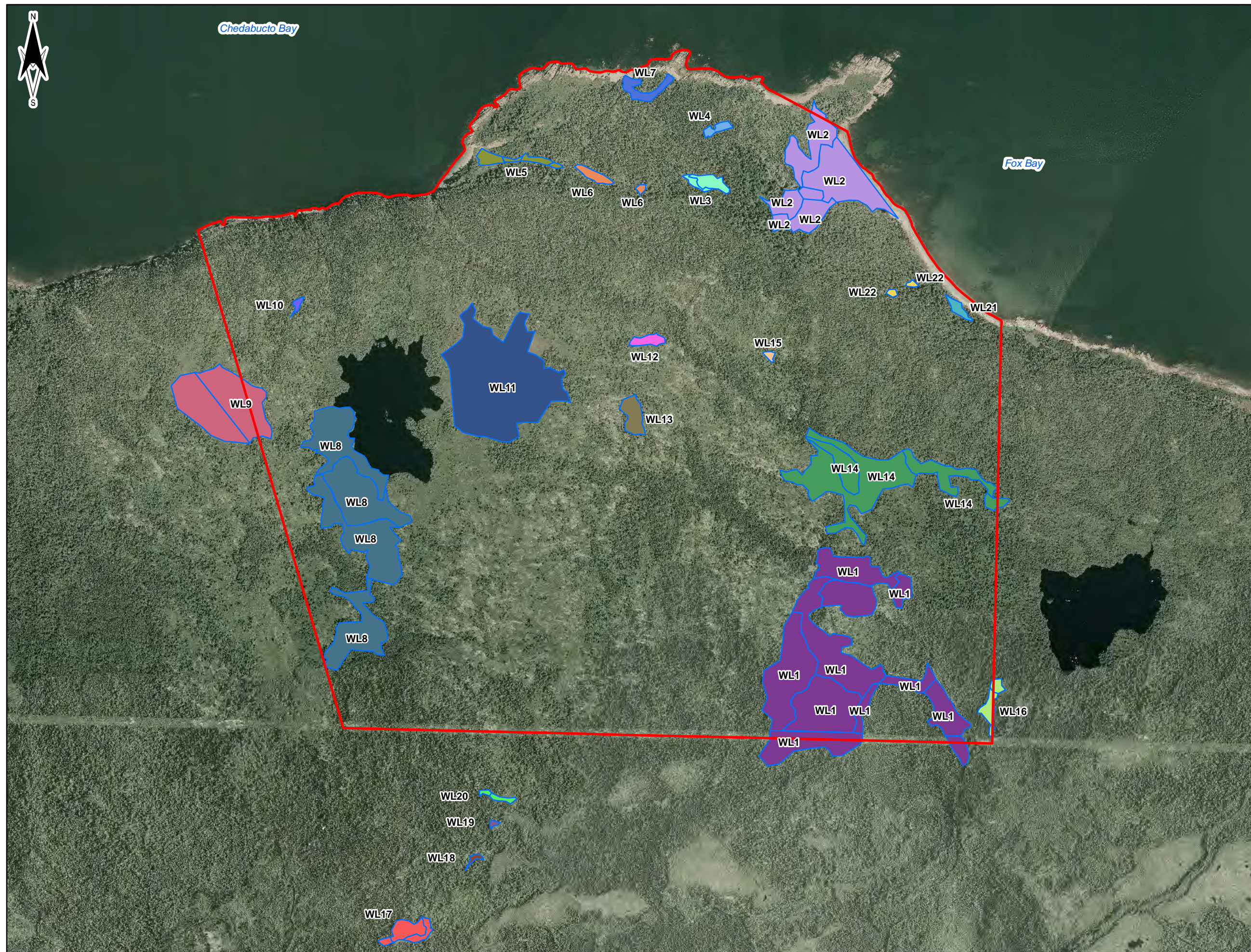


TITLE:	Figure 1 Project Location
PROJECT:	2010 / 2011 / 2014 WETLAND FIELD SURVEY DELINEATION AND FUNCTIONAL ASSESSMENT REPORT BLACK POINT QUARRY GUYSBOROUGH COUNTY
CLIENT:	Morien Resources Corp. (Morien) Metropolitan Place Suite 1480, 99 Wyse Road Dartmouth, Nova Scotia, Canada, B3A 4S5
LOCATION:	Guysborough County Nova Scotia
DATE:	September 2014
DATUM & PROJECTION:	NAD83 CSRS UTM Zone 20N
AMEC PROJECT NO:	TV144003
LEGEND:	<ul style="list-style-type: none"> Site Boundary Roads River / Stream Waterbody
	
	<p>AMEC Environment & Infrastructure A Division of AMEC Americas Ltd.</p> <p>50 Troop Avenue, Unit 300 Dartmouth, N.S., B3B 1Z1 (P) 902-468-2848 (F) 902-468-1314</p> 
	<p>Sources: Esri, HERE, DeLorme, TomTom, Intermap, increment P Corp., GEBCO, USGS, FAO, NPS, NRCAN, GeoBase, IGN, Kadaster NL, Ordnance Survey, Esri Japan, METI, Esri China</p>



Chedabucto Bay

Fox Bay



TITLE:

**Figure 2
Wetland Delineation Overview**

PROJECT: 2010 / 2011 / 2014 WETLAND
FIELD SURVEY DELINEATION
AND FUNCTIONAL ASSESSMENT
REPORT BLACK POINT QUARRY
GUYSBOROUGH COUNTY

CLIENT:
Morien Resources Corp. (Morien)
Metropolitan Place
Suite 1480, 99 Wyse Road
Dartmouth, Nova Scotia,
Canada, B3A 4S5

LOCATION:
**Guysborough County
Nova Scotia**

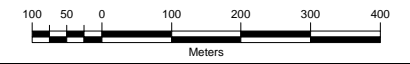
DATE:
September 2014

DATUM & PROJECTION:
NAD83 CSRS UTM Zone 20N

AMEC PROJECT NO:
TV144003

LEGEND:

- Site Boundary
- Wetlands**
- WL1
- WL2
- WL3
- WL4
- WL5
- WL6
- WL7
- WL8
- WL9
- WL10
- WL11
- WL12
- WL13
- WL14
- WL15
- WL16
- WL17
- WL18
- WL19
- WL20
- WL21
- WL22



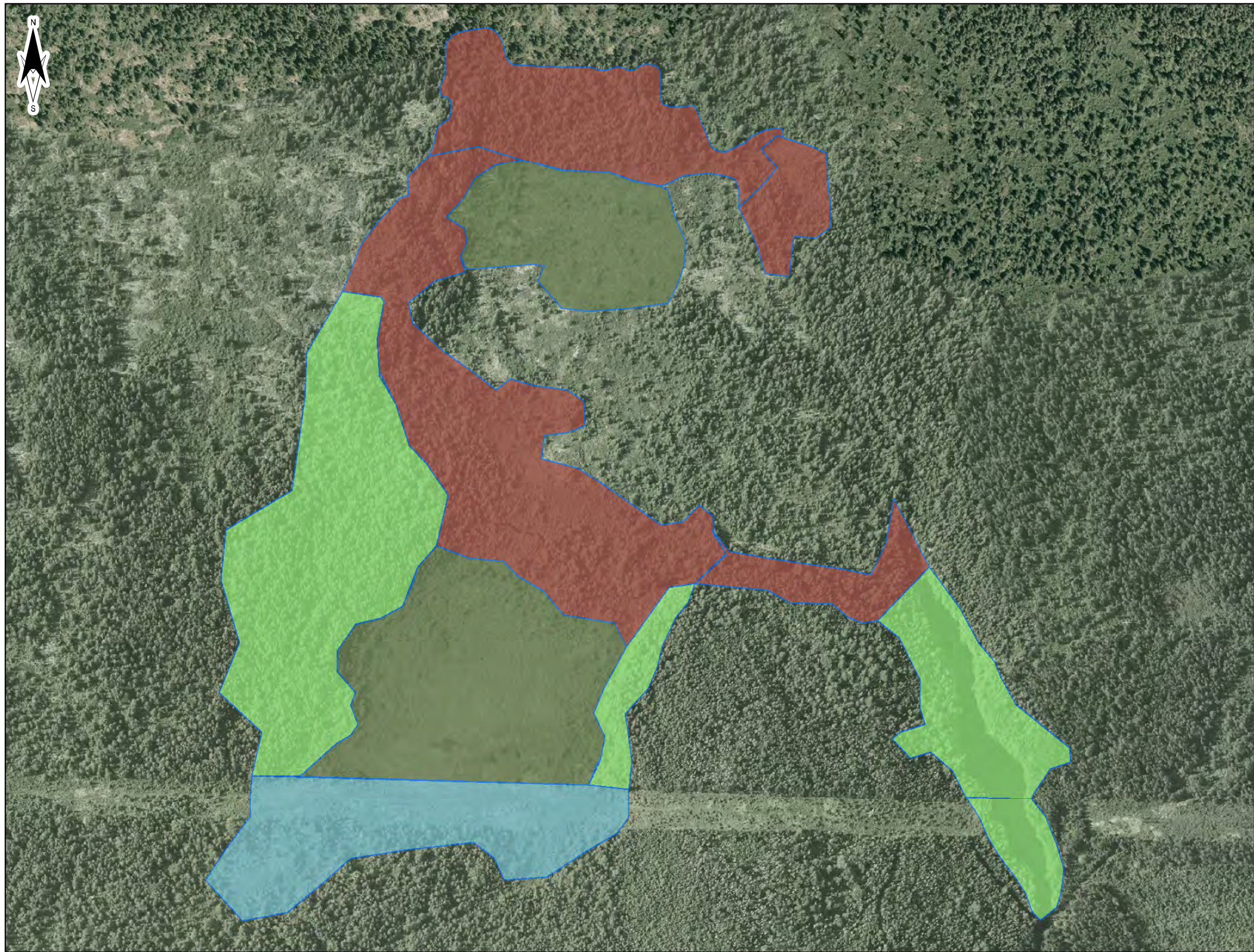
**AMEC Environment & Infrastructure
A Division of AMEC Americas Ltd.**

50 Troop Avenue, Unit 300
Dartmouth, N.S., B3B 1Z1
(P) 902-468-2848 (F) 902-468-1314



Path: P:\5300 PROJECTS\2014\TV144003 - Black Point Quarry EA Support\CAD\Wetland Field Report Figures\Figure 2 - Wetland Delineation Overview.mxd User: derrick.schulz Date: 9/24/2014

Base Image: Nova Scotia Geomatics Centre; Orthoimagery from GeoNOVA, Dated 2007

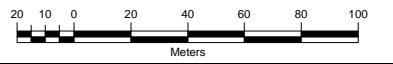


TITLE:	Figure 3 Wetland WL1
PROJECT:	2010 / 2011 / 2014 WETLAND FIELD SURVEY DELINEATION AND FUNCTIONAL ASSESSMENT REPORT BLACK POINT QUARRY GUYSBOROUGH COUNTY
CLIENT:	Morien Resources Corp. (Morien) Metropolitan Place Suite 1480, 99 Wyse Road Dartmouth, Nova Scotia, Canada, B3A 4S5
LOCATION:	Guysborough County Nova Scotia
DATE:	September 2014
DATUM & PROJECTION:	NAD83 CSRS UTM Zone 20N
AMEC PROJECT NO:	TV144003

LEGEND:

Wetland 1

-  Bog
-  Forested Swamp
-  Shrub Bog
-  Shrub Swamp



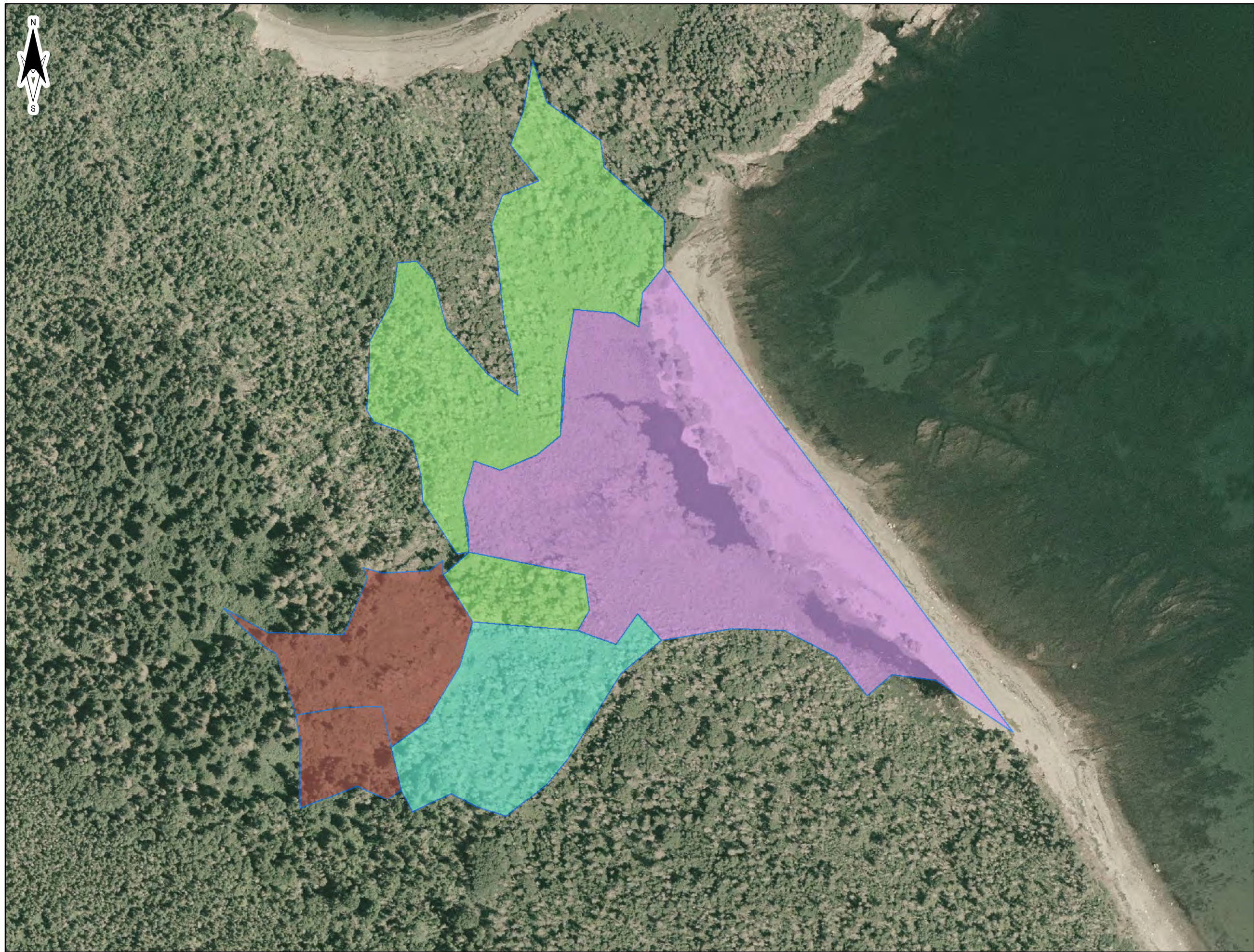
**AMEC Environment & Infrastructure
A Division of AMEC Americas Ltd.**

50 Troop Avenue, Unit 300
Dartmouth, N.S., B3B 1Z1
(P) 902-468-2848 (F) 902-468-1314



Path: P:\5300 PROJECTS\2014\TV144003 - Black Point Quarry EA Support\CAD\Wetland Field Report Figures\Figure 3 - Wetland WL1.mxd User: derrick.schulz Date: 9/24/2014

Base Image: Nova Scotia Geomatics Centre; Orthoimagery from GeoNOVA, Dated 2007



TITLE:

**Figure 4
Wetland WL2**

PROJECT: **2010 / 2011 / 2014 WETLAND
FIELD SURVEY DELINEATION
AND FUNCTIONAL ASSESSMENT
REPORT BLACK POINT QUARRY
GUYSBOROUGH COUNTY**

CLIENT:
**Morien Resources Corp. (Morien)
Metropolitan Place
Suite 1480, 99 Wyse Road
Dartmouth, Nova Scotia,
Canada, B3A 4S5**


LOCATION:
**Guysborough County
Nova Scotia**

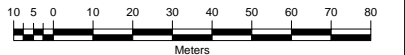
DATE:
September 2014

DATUM & PROJECTION:
NAD83 CSRS UTM Zone 20N

AMEC PROJECT NO:
TV144003

LEGEND:

- Wetland 2**
-  Fen
 -  Forested Swamp
 -  Fresh Marsh
 -  Shrub Swamp



**AMEC Environment & Infrastructure
A Division of AMEC Americas Ltd.**

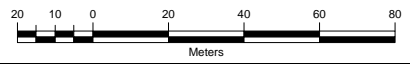
50 Troop Avenue, Unit 300
Dartmouth, N.S., B3B 1Z1
(P) 902-468-2848 (F) 902-468-1314





TITLE:	Figure 5 Wetland WL3
PROJECT:	2010 / 2011 / 2014 WETLAND FIELD SURVEY DELINEATION AND FUNCTIONAL ASSESSMENT REPORT BLACK POINT QUARRY GUYSBOROUGH COUNTY
CLIENT:	Morien Resources Corp. (Morien) Metropolitan Place Suite 1480, 99 Wyse Road Dartmouth, Nova Scotia, Canada, B3A 4S5
LOCATION:	Guysborough County Nova Scotia
DATE:	September 2014
DATUM & PROJECTION:	NAD83 CSRS UTM Zone 20N
AMEC PROJECT NO:	TV144003

LEGEND:	Wetland 3
	 Fen



AMEC Environment & Infrastructure
A Division of AMEC Americas Ltd.

50 Troop Avenue, Unit 300
Dartmouth, N.S., B3B 1Z1
(P) 902-468-2848 (F) 902-468-1314



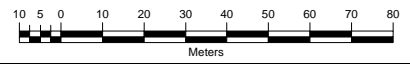
Path: P:\5300 PROJECTS\2014\TV144003 - Black Point Quarry EA Support\CAD\Wetland Field Report Figures\Figure 5 - Wetland WL3.mxd User: derrick.schulz Date: 9/24/2014

Base Image: Nova Scotia Geomatics Centre; Orthoimagery from GeoNOVA, Dated 2007



TITLE:	Figure 6 Wetland WL4
PROJECT:	2010 / 2011 / 2014 WETLAND FIELD SURVEY DELINEATION AND FUNCTIONAL ASSESSMENT REPORT BLACK POINT QUARRY GUYSBOROUGH COUNTY
CLIENT:	Morien Resources Corp. (Morien) Metropolitan Place Suite 1480, 99 Wyse Road Dartmouth, Nova Scotia, Canada, B3A 4S5
LOCATION:	Guysborough County Nova Scotia
DATE:	September 2014
DATUM & PROJECTION:	NAD83 CSRS UTM Zone 20N
AMEC PROJECT NO:	TV144003

LEGEND:	Wetland 4  Treed Bog
---------	--



AMEC Environment & Infrastructure
A Division of AMEC Americas Ltd.
 50 Troop Avenue, Unit 300
 Dartmouth, N.S., B3B 1Z1
 (P) 902-468-2848 (F) 902-468-1314



Path: P:\5300 PROJECTS\2014\TV144003 - Black Point Quarry EA Support\CAD\Wetland Field Report Figures\Figure 6 - Wetland WL4.mxd User: derrick.schulz Date: 9/24/2014

Base Image: Nova Scotia Geomatics Centre; Orthoimagery from GeoNOVA, Dated 2007



TITLE:

**Figure 7
Wetland WL5**

PROJECT: **2010 / 2011 / 2014 WETLAND
FIELD SURVEY DELINEATION
AND FUNCTIONAL ASSESSMENT
REPORT BLACK POINT QUARRY
GUYSBOROUGH COUNTY**

CLIENT:
**Morien Resources Corp. (Morien)
Metropolitan Place
Suite 1480, 99 Wyse Road
Dartmouth, Nova Scotia,
Canada, B3A 4S5**

LOCATION:
**Guysborough County
Nova Scotia**

DATE:
September 2014

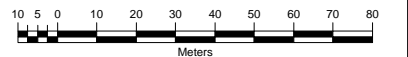
DATUM & PROJECTION:
NAD83 CSRS UTM Zone 20N

AMEC PROJECT NO:
TV144003

LEGEND:

Wetland 5

 Fen



**AMEC Environment & Infrastructure
A Division of AMEC Americas Ltd.**

50 Troop Avenue, Unit 300
Dartmouth, N.S., B3B 1Z1
(P) 902-468-2848 (F) 902-468-1314





TITLE:

**Figure 8
Wetland WL6**

PROJECT: **2010 / 2011 / 2014 WETLAND
FIELD SURVEY DELINEATION
AND FUNCTIONAL ASSESSMENT
REPORT BLACK POINT QUARRY
GUYSBOROUGH COUNTY**

CLIENT:
**Morien Resources Corp. (Morien)
Metropolitan Place
Suite 1480, 99 Wyse Road
Dartmouth, Nova Scotia,
Canada, B3A 4S5**

LOCATION:
**Guysborough County
Nova Scotia**



DATE:
September 2014

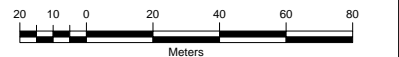
DATUM & PROJECTION:
NAD83 CSRS UTM Zone 20N

AMEC PROJECT NO:
TV144003

LEGEND:

Wetland 6

-  Bog
-  Treed Bog



**AMEC Environment & Infrastructure
A Division of AMEC Americas Ltd.**

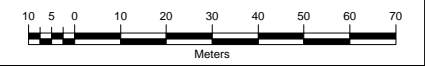
50 Troop Avenue, Unit 300
Dartmouth, N.S., B3B 1Z1
(P) 902-468-2848 (F) 902-468-1314





TITLE:	Figure 9 Wetland WL7
PROJECT:	2010 / 2011 / 2014 WETLAND FIELD SURVEY DELINEATION AND FUNCTIONAL ASSESSMENT REPORT BLACK POINT QUARRY GUYSBOROUGH COUNTY
CLIENT:	Morien Resources Corp. (Morien) Metropolitan Place Suite 1480, 99 Wyse Road Dartmouth, Nova Scotia, Canada, B3A 4S5
LOCATION:	Guysborough County Nova Scotia
DATE:	September 2014
DATUM & PROJECTION:	NAD83 CSRS UTM Zone 20N
AMEC PROJECT NO:	TV144003

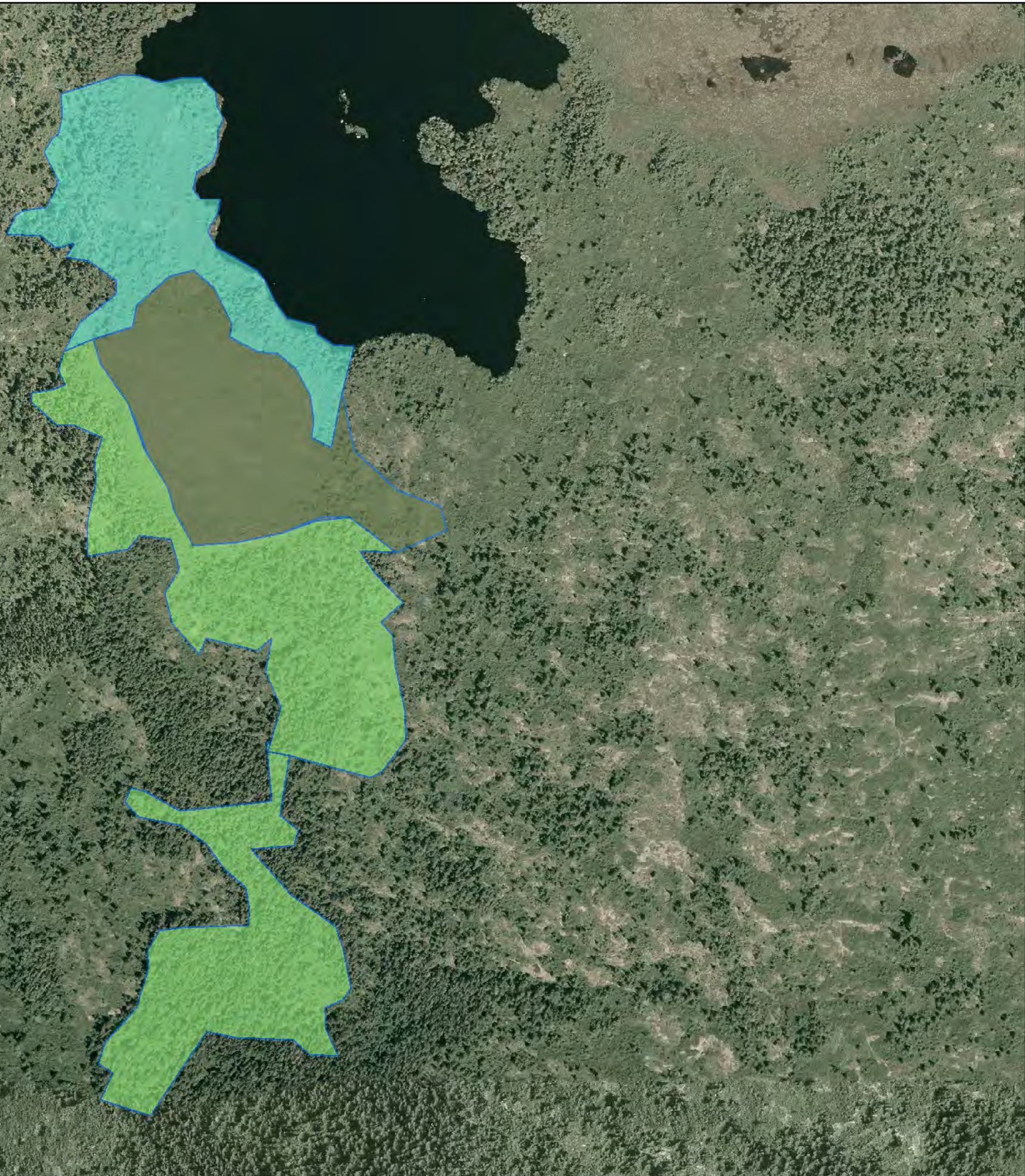
LEGEND:	Wetland 7  Forested Swamp
---------	--



**AMEC Environment & Infrastructure
A Division of AMEC Americas Ltd.**
50 Troop Avenue, Unit 300
Dartmouth, N.S., B3B 1Z1
(P) 902-468-2848 (F) 902-468-1314


Path: P:\5300 PROJECTS\2014\TV144003 - Black Point Quarry EA Support\CAD\Wetland Field Report Figures\Figure 9 - Wetland WL7.mxd User: derrick.schuz Date: 9/24/2014

Base Image: Nova Scotia Geomatics Centre; Orthoimagery from GeoNOVA, Dated 2007



TITLE:

**Figure 10
Wetland WL8**

PROJECT: **2010 / 2011 / 2014 WETLAND
FIELD SURVEY DELINEATION
AND FUNCTIONAL ASSESSMENT
REPORT BLACK POINT QUARRY
GUYSBOROUGH COUNTY**

CLIENT:
**Morien Resources Corp. (Morien)
Metropolitan Place
Suite 1480, 99 Wyse Road
Dartmouth, Nova Scotia,
Canada, B3A 4S5**




LOCATION:
**Guysborough County
Nova Scotia**

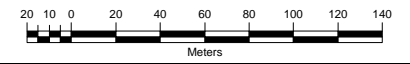
DATE:
September 2014

DATUM & PROJECTION:
NAD83 CSRS UTM Zone 20N

AMEC PROJECT NO:
TV144003

LEGEND:

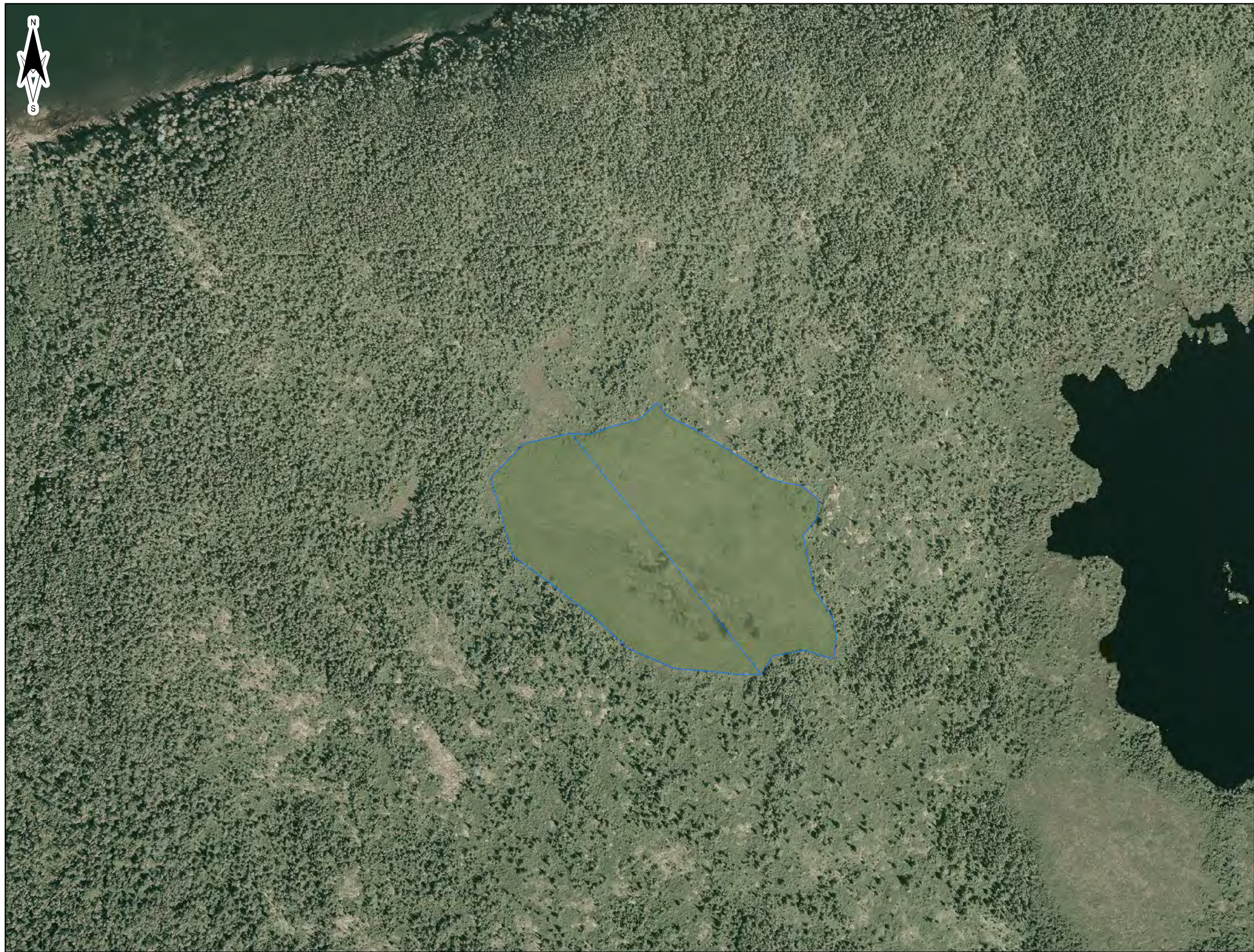
- Wetland 8**
-  Bog
 -  Fen
 -  Forested Swamp



**AMEC Environment & Infrastructure
A Division of AMEC Americas Ltd.**

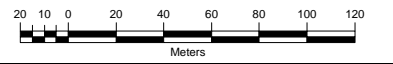
50 Troop Avenue, Unit 300
Dartmouth, N.S., B3B 1Z1
(P) 902-468-2848 (F) 902-468-1314





TITLE:	Figure 11 Wetland WL9
PROJECT:	2010 / 2011 / 2014 WETLAND FIELD SURVEY DELINEATION AND FUNCTIONAL ASSESSMENT REPORT BLACK POINT QUARRY GUYSBOROUGH COUNTY
CLIENT:	Morien Resources Corp. (Morien) Metropolitan Place Suite 1480, 99 Wyse Road Dartmouth, Nova Scotia, Canada, B3A 4S5
LOCATION:	Guysborough County Nova Scotia
DATE:	September 2014
DATUM & PROJECTION:	NAD83 CSRS UTM Zone 20N
AMEC PROJECT NO:	TV144003

LEGEND:	Wetland 9
	 Bog



**AMEC Environment & Infrastructure
A Division of AMEC Americas Ltd.**

50 Troop Avenue, Unit 300
Dartmouth, N.S., B3B 1Z1
(P) 902-468-2848 (F) 902-468-1314



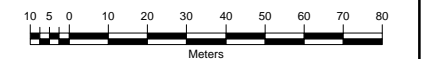
Path: P:\5300 PROJECTS\2014\TV144003 - Black Point Quarry EA Support\CAD\Wetland Field Report Figures\Figure 11 - Wetland WL9.mxd User: derrick.schulz Date: 9/24/2014

Base Image: Nova Scotia Geomatics Centre; Orthoimagery from GeoNOVA, Dated 2007



TITLE:	Figure 12 Wetland WL10
PROJECT:	2010 / 2011 / 2014 WETLAND FIELD SURVEY DELINEATION AND FUNCTIONAL ASSESSMENT REPORTBLACK POINT QUARRY GUYSBOROUGH COUNTY
CLIENT:	Morien Resources Corp. (Morien) Metropolitan Place Suite 1480, 99 Wyse Road Dartmouth, Nova Scotia, Canada, B3A 4S5
LOCATION:	Guysborough County Nova Scotia
DATE:	September 2014
DATUM & PROJECTION:	NAD83 CSRS UTM Zone 20N
AMEC PROJECT NO:	TV144003

LEGEND:	Wetland 10  Forested Swamp
---------	---



**AMEC Environment & Infrastructure
A Division of AMEC Americas Ltd.**

50 Troop Avenue, Unit 300
Dartmouth, N.S., B3B 1Z1
(P) 902-468-2848 (F) 902-468-1314






Path: P:\5300 PROJECTS\2014\TV144003 - Black Point Quarry EA Support\CAD\Wetland Field Report Figures\Figure 13 - Wetland WL11.mxd User: derrick.schulz Date: 9/24/2014

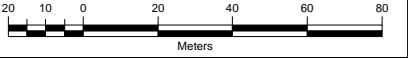
Base Image: Nova Scotia Geomatics Centre; Orthoimagery from GeoNOVA, Dated 2007

TITLE:	Figure 13 Wetland WL11
PROJECT:	2010 / 2011 / 2014 WETLAND FIELD SURVEY DELINEATION AND FUNCTIONAL ASSESSMENT REPORTBLACK POINT QUARRY GUYSBOROUGH COUNTY
CLIENT:	Morien Resources Corp. (Morien) Metropolitan Place Suite 1480, 99 Wyse Road Dartmouth, Nova Scotia, Canada, B3A 4S5
LOCATION:	Guysborough County Nova Scotia
DATE:	September 2014
DATUM & PROJECTION:	NAD83 CSRS UTM Zone 20N
AMEC PROJECT NO:	TV144003
LEGEND:	<p>Wetland 11</p> <ul style="list-style-type: none"> ■ Bog
<p>Meters</p>	
<p>AMEC Environment & Infrastructure A Division of AMEC Americas Ltd.</p> <p>50 Troop Avenue, Unit 300 Dartmouth, N.S., B3B 1Z1 (P) 902-468-2848 (F) 902-468-1314</p>	



TITLE:	Figure 14 Wetland WL12
PROJECT:	2010 / 2011 / 2014 WETLAND FIELD SURVEY DELINEATION AND FUNCTIONAL ASSESSMENT REPORT BLACK POINT QUARRY GUYSBOROUGH COUNTY
CLIENT:	Morien Resources Corp. (Morien) Metropolitan Place Suite 1480, 99 Wyse Road Dartmouth, Nova Scotia, Canada, B3A 4S5
LOCATION:	Guysborough County Nova Scotia
DATE:	September 2014
DATUM & PROJECTION:	NAD83 CSRS UTM Zone 20N
AMEC PROJECT NO:	TV144003

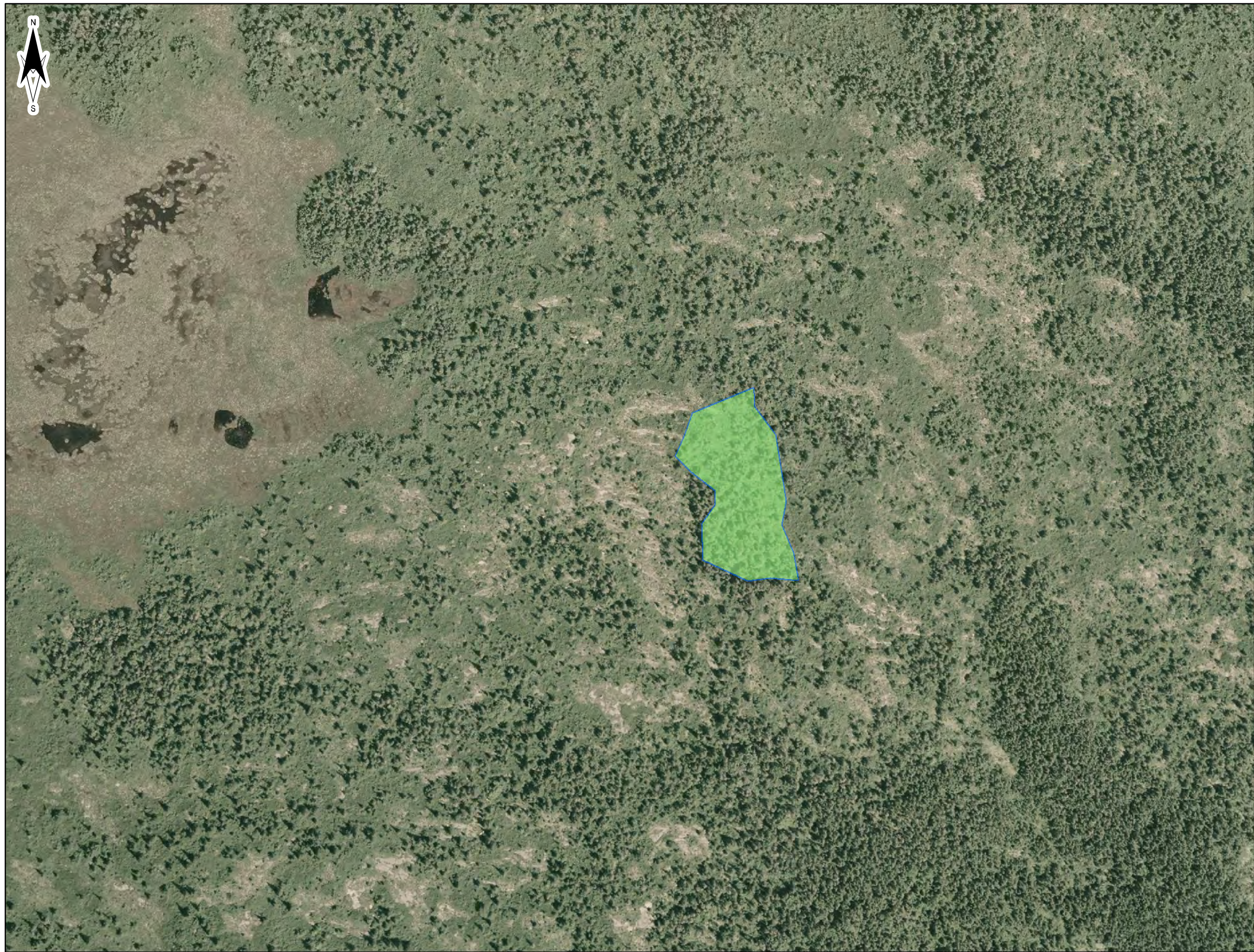
LEGEND:
Wetland 12
 Fen



**AMEC Environment & Infrastructure
A Division of AMEC Americas Ltd.**

50 Troop Avenue, Unit 300
Dartmouth, N.S., B3B 1Z1
(P) 902-468-2848 (F) 902-468-1314



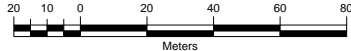


TITLE:	Figure 15 Wetland WL13
PROJECT:	2010 / 2011 / 2014 WETLAND FIELD SURVEY DELINEATION AND FUNCTIONAL ASSESSMENT REPORTBLACK POINT QUARRY GUYSBOROUGH COUNTY
CLIENT:	Morien Resources Corp. (Morien) Metropolitan Place Suite 1480, 99 Wyse Road Dartmouth, Nova Scotia, Canada, B3A 4S5
LOCATION:	Guysborough County Nova Scotia
DATE:	September 2014
DATUM & PROJECTION:	NAD83 CSRS UTM Zone 20N
AMEC PROJECT NO:	TV144003

LEGEND:

Wetland 13

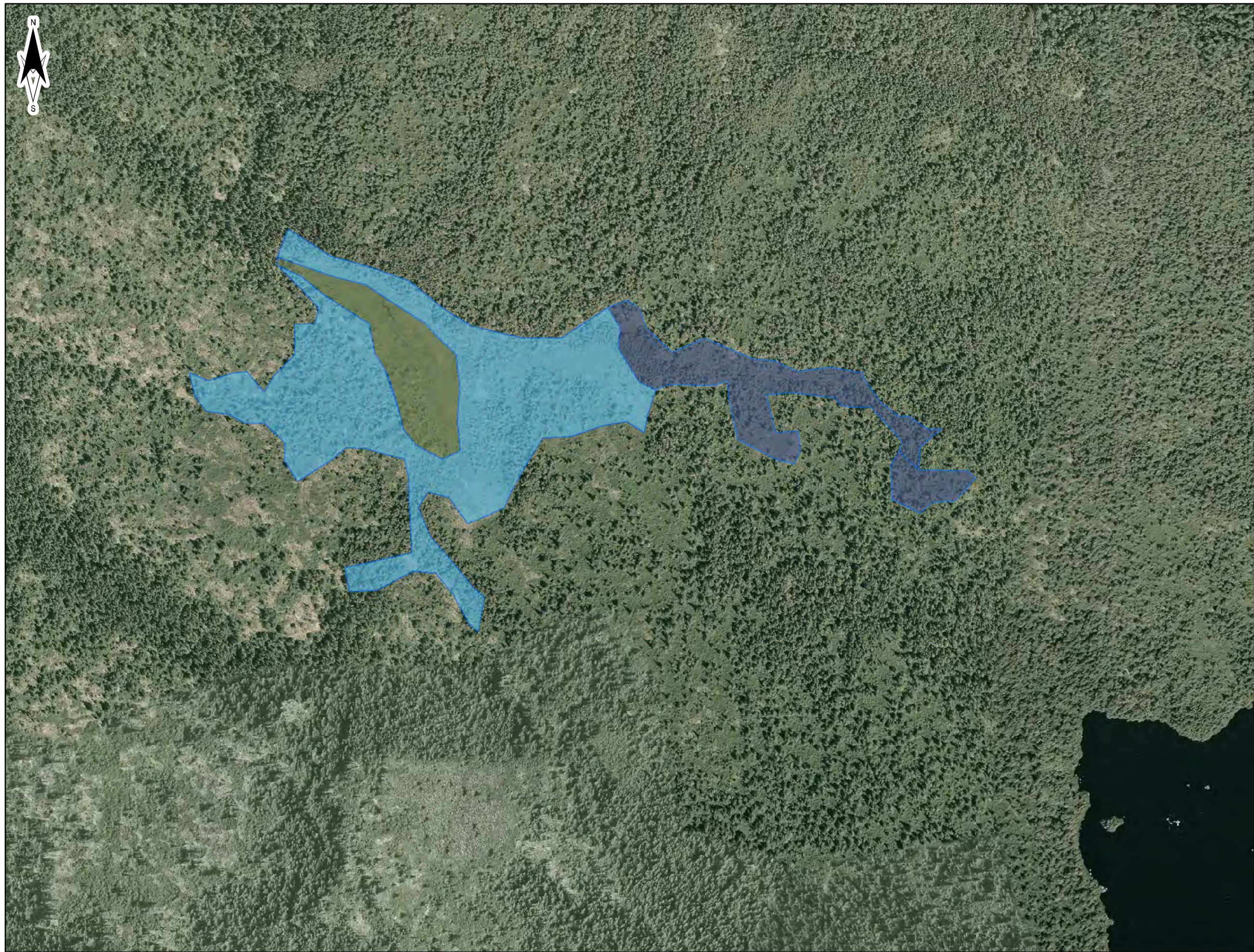
 Forested Swamp



**AMEC Environment & Infrastructure
A Division of AMEC Americas Ltd.**

50 Troop Avenue, Unit 300
Dartmouth, N.S., B3B 1Z1
(P) 902-468-2848 (F) 902-468-1314





TITLE:
**Figure 16
Wetland WL14**

PROJECT: **2010 / 2011 / 2014 WETLAND
FIELD SURVEY DELINEATION
AND FUNCTIONAL ASSESSMENT
REPORT BLACK POINT QUARRY
GUYSBOROUGH COUNTY**

CLIENT:
**Morien Resources Corp. (Morien)
Metropolitan Place
Suite 1480, 99 Wyse Road
Dartmouth, Nova Scotia,
Canada, B3A 4S5**

LOCATION:
**Guysborough County
Nova Scotia**




DATE:
September 2014

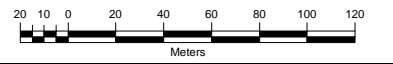
DATUM & PROJECTION:
NAD83 CSRS UTM Zone 20N

AMEC PROJECT NO:
TV144003

LEGEND:

Wetland 14

-  Bog
-  Shrub Fen
-  Treed Bog



**AMEC Environment & Infrastructure
A Division of AMEC Americas Ltd.**

50 Troop Avenue, Unit 300
Dartmouth, N.S., B3B 1Z1
(P) 902-468-2848 (F) 902-468-1314





TITLE:

**Figure 17
Wetland WL15**

PROJECT: **2010 / 2011 / 2014 WETLAND
FIELD SURVEY DELINEATION
AND FUNCTIONAL ASSESSMENT
REPORT BLACK POINT QUARRY
GUYSBOROUGH COUNTY**

CLIENT:
**Morien Resources Corp. (Morien)
Metropolitan Place
Suite 1480, 99 Wyse Road
Dartmouth, Nova Scotia,
Canada, B3A 4S5**

LOCATION:
**Guysborough County
Nova Scotia**

DATE: **September 2014**

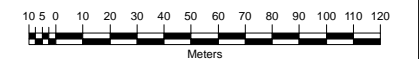
DATUM & PROJECTION:
NAD83 CSRS UTM Zone 20N

AMEC PROJECT NO: **TV144003**

LEGEND:

Wetland 15

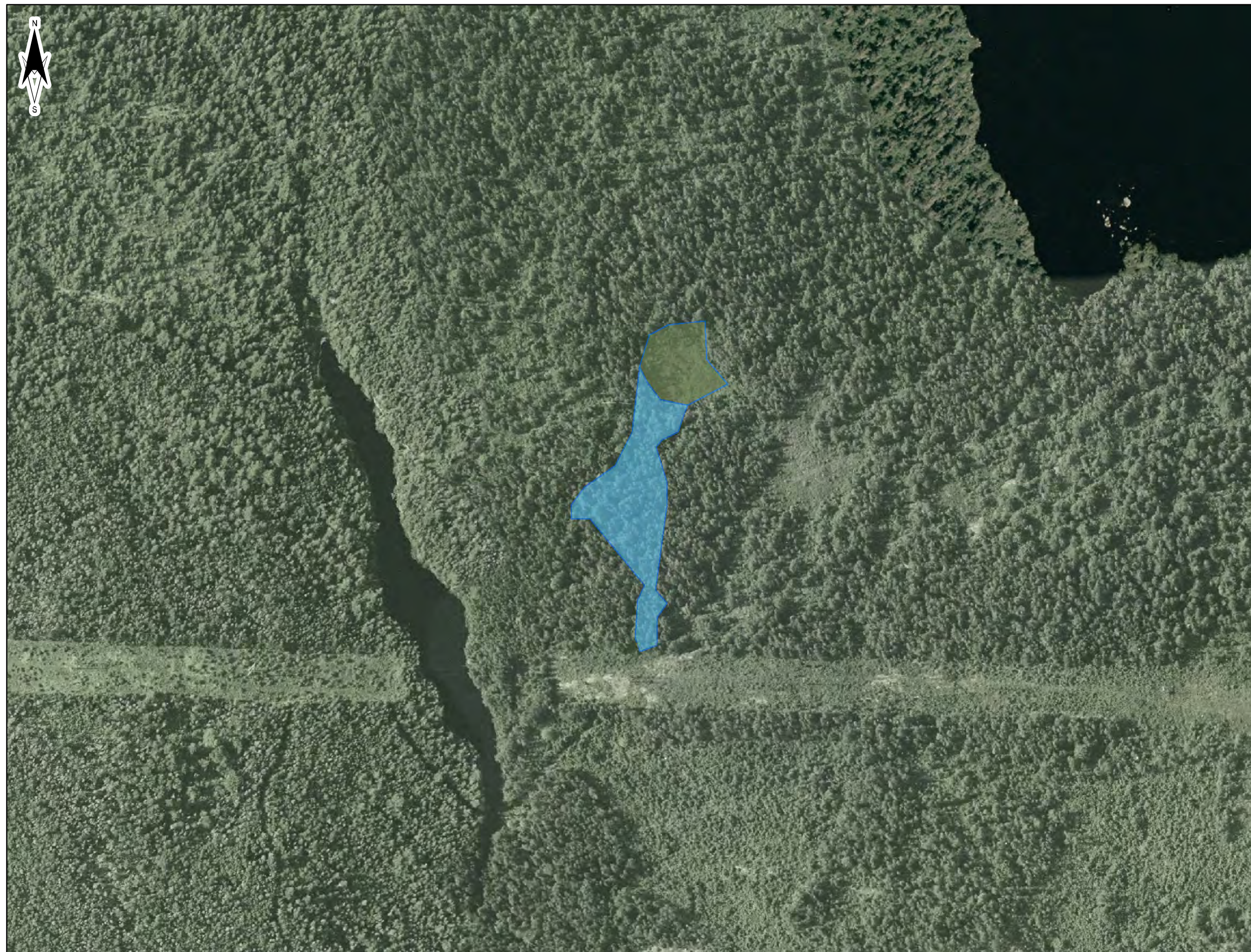
 Fen



**AMEC Environment & Infrastructure
A Division of AMEC Americas Ltd.**



50 Troop Avenue, Unit 300
Dartmouth, N.S., B3B 1Z1
(P) 902-468-2848 (F) 902-468-1314

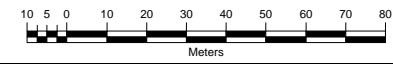




TITLE:	Figure 18 Wetland WL16
PROJECT:	2010 / 2011 / 2014 WETLAND FIELD SURVEY DELINEATION AND FUNCTIONAL ASSESSMENT REPORT BLACK POINT QUARRY GUYSBOROUGH COUNTY
CLIENT:	Morien Resources Corp. (Morien) Metropolitan Place Suite 1480, 99 Wyse Road Dartmouth, Nova Scotia, Canada, B3A 4S5
LOCATION:	Guysborough County Nova Scotia
DATE:	September 2014
DATUM & PROJECTION:	NAD83 CSRS UTM Zone 20N
AMEC PROJECT NO:	TV144003

LEGEND:

Wetland 16
 Bog
 Treed Bog



AMEC Environment & Infrastructure
A Division of AMEC Americas Ltd.

50 Troop Avenue, Unit 300
Dartmouth, N.S., B3B 1Z1
(P) 902-468-2848 (F) 902-468-1314



Path: P:\5300 PROJECTS\2014\TV144003 - Black Point Quarry EA Support\CAD\Wetland Field Report Figures\Figure 18 - Wetland WL 16.mxd User: derrick.schulz Date: 9/24/2014

Base Image: Nova Scotia Geomatics Centre; Orthoimagery from GeoNOVA, Dated 2007



TITLE:

**Figure 19
Wetland WL17**

PROJECT: **2010 / 2011 / 2014 WETLAND
FIELD SURVEY DELINEATION
AND FUNCTIONAL ASSESSMENT
REPORTBLACK POINT QUARRY
GUYSBOROUGH COUNTY**

CLIENT:
**Morien Resources Corp. (Morien)
Metropolitan Place
Suite 1480, 99 Wyse Road
Dartmouth, Nova Scotia,
Canada, B3A 4S5**

LOCATION:
**Guysborough County
Nova Scotia**



DATE:
September 2014

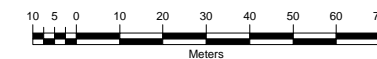
DATUM & PROJECTION:
NAD83 CSRS UTM Zone 20N

AMEC PROJECT NO:
TV144003

LEGEND:

Wetland 17

-  Bog
-  Forested Swamp



**AMEC Environment & Infrastructure
A Division of AMEC Americas Ltd.**

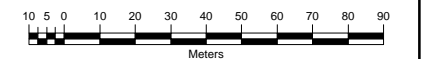
50 Troop Avenue, Unit 300
Dartmouth, N.S., B3B 1Z1
(P) 902-468-2848 (F) 902-468-1314





TITLE:	Figure 20 Wetland WL18
PROJECT:	2010 / 2011 / 2014 WETLAND FIELD SURVEY DELINEATION AND FUNCTIONAL ASSESSMENT REPORTBLACK POINT QUARRY GUYSBOROUGH COUNTY
CLIENT:	Morien Resources Corp. (Morien) Metropolitan Place Suite 1480, 99 Wyse Road Dartmouth, Nova Scotia, Canada, B3A 4S5
LOCATION:	Guysborough County Nova Scotia
DATE:	September 2014
DATUM & PROJECTION:	NAD83 CSRS UTM Zone 20N
AMEC PROJECT NO:	TV144003

LEGEND:
Wetland 18
 Bog




**AMEC Environment & Infrastructure
A Division of AMEC Americas Ltd.**

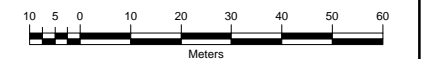
50 Troop Avenue, Unit 300
Dartmouth, N.S., B3B 1Z1
(P) 902-468-2848 (F) 902-468-1314





TITLE:	Figure 21 Wetland WL19
PROJECT:	2010 / 2011 / 2014 WETLAND FIELD SURVEY DELINEATION AND FUNCTIONAL ASSESSMENT REPORT BLACK POINT QUARRY GUYSBOROUGH COUNTY
CLIENT:	Morien Resources Corp. (Morien) Metropolitan Place Suite 1480, 99 Wyse Road Dartmouth, Nova Scotia, Canada, B3A 4S5
LOCATION:	Guysborough County Nova Scotia
DATE:	September 2014
DATUM & PROJECTION:	NAD83 CSRS UTM Zone 20N
AMEC PROJECT NO:	TV144003

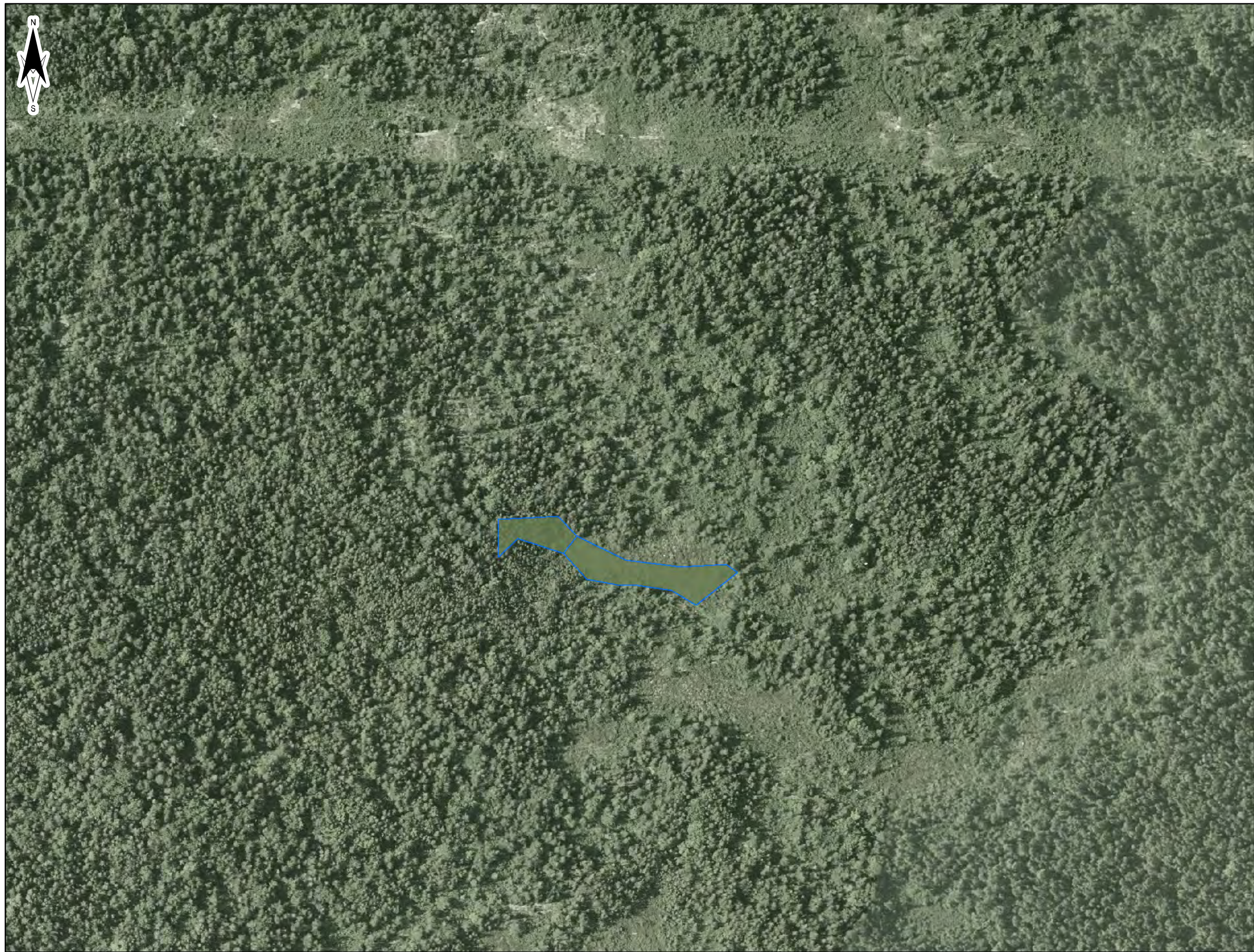
LEGEND:
Wetland 19
 Bog



**AMEC Environment & Infrastructure
A Division of AMEC Americas Ltd.**

50 Troop Avenue, Unit 300
Dartmouth, N.S., B3B 1Z1
(P) 902-468-2848 (F) 902-468-1314





TITLE:

**Figure 22
Wetland WL20**

PROJECT: **2010 / 2011 / 2014 WETLAND
FIELD SURVEY DELINEATION
AND FUNCTIONAL ASSESSMENT
REPORT BLACK POINT QUARRY
GUYSBOROUGH COUNTY**

CLIENT:
**Morien Resources Corp. (Morien)
Metropolitan Place
Suite 1480, 99 Wyse Road
Dartmouth, Nova Scotia,
Canada, B3A 4S5**

LOCATION:
**Guysborough County
Nova Scotia**


DATE:
September 2014

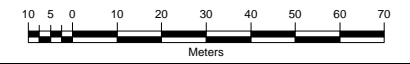
DATUM & PROJECTION:
NAD83 CSRS UTM Zone 20N

AMEC PROJECT NO:
TV144003

LEGEND:

Wetland 20

 Bog



**AMEC Environment & Infrastructure
A Division of AMEC Americas Ltd.**

50 Troop Avenue, Unit 300
Dartmouth, N.S., B3B 1Z1
(P) 902-468-2848 (F) 902-468-1314



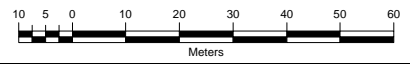
Path: P:\5300 PROJECTS\2014\TV144003 - Black Point Quarry EA Support\CAD\Wetland Field Report Figures\Figure 22 - Wetland WL20.mxd User: derrick.schulz Date: 9/24/2014

Base Image: Nova Scotia Geomatics Centre; Orthoimagery from GeoNOVA, Dated 2007



TITLE:	Figure 23 Wetland WL21
PROJECT:	2010 / 2011 / 2014 WETLAND FIELD SURVEY DELINEATION AND FUNCTIONAL ASSESSMENT REPORTBLACK POINT QUARRY GUYSBOROUGH COUNTY
CLIENT:	Morien Resources Corp. (Morien) Metropolitan Place Suite 1480, 99 Wyse Road Dartmouth, Nova Scotia, Canada, B3A 4S5
LOCATION:	Guysborough County Nova Scotia
DATE:	September 2014
DATUM & PROJECTION:	NAD83 CSRS UTM Zone 20N
AMEC PROJECT NO:	TV144003

LEGEND:
 Fen



**AMEC Environment & Infrastructure
A Division of AMEC Americas Ltd.**
50 Troop Avenue, Unit 300
Dartmouth, N.S., B3B 1Z1
(P) 902-468-2848 (F) 902-468-1314




TITLE:

**Figure 24
Wetland WL22**

PROJECT: **2010 / 2011 / 2014 WETLAND
FIELD SURVEY DELINEATION
AND FUNCTIONAL ASSESSMENT
REPORT BLACK POINT QUARRY
GUYSBOROUGH COUNTY**

CLIENT:
**Morien Resources Corp. (Morien)
Metropolitan Place
Suite 1480, 99 Wyse Road
Dartmouth, Nova Scotia,
Canada, B3A 4S5**

LOCATION:
**Guysborough County
Nova Scotia**

DATE:
September 2014

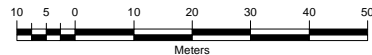
DATUM & PROJECTION:
NAD83 CSRS UTM Zone 20N

AMEC PROJECT NO:
TV144003

LEGEND:

Wetland 22

 Fen



**AMEC Environment & Infrastructure
A Division of AMEC Americas Ltd.**

50 Troop Avenue, Unit 300
Dartmouth, N.S., B3B 1Z1
(P) 902-468-2848 (F) 902-468-1314

