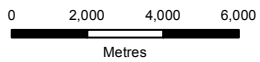


Source: Service Nova Scotia



Coordinate System:  
NAD 1983 CSRS UTM Zone 20N

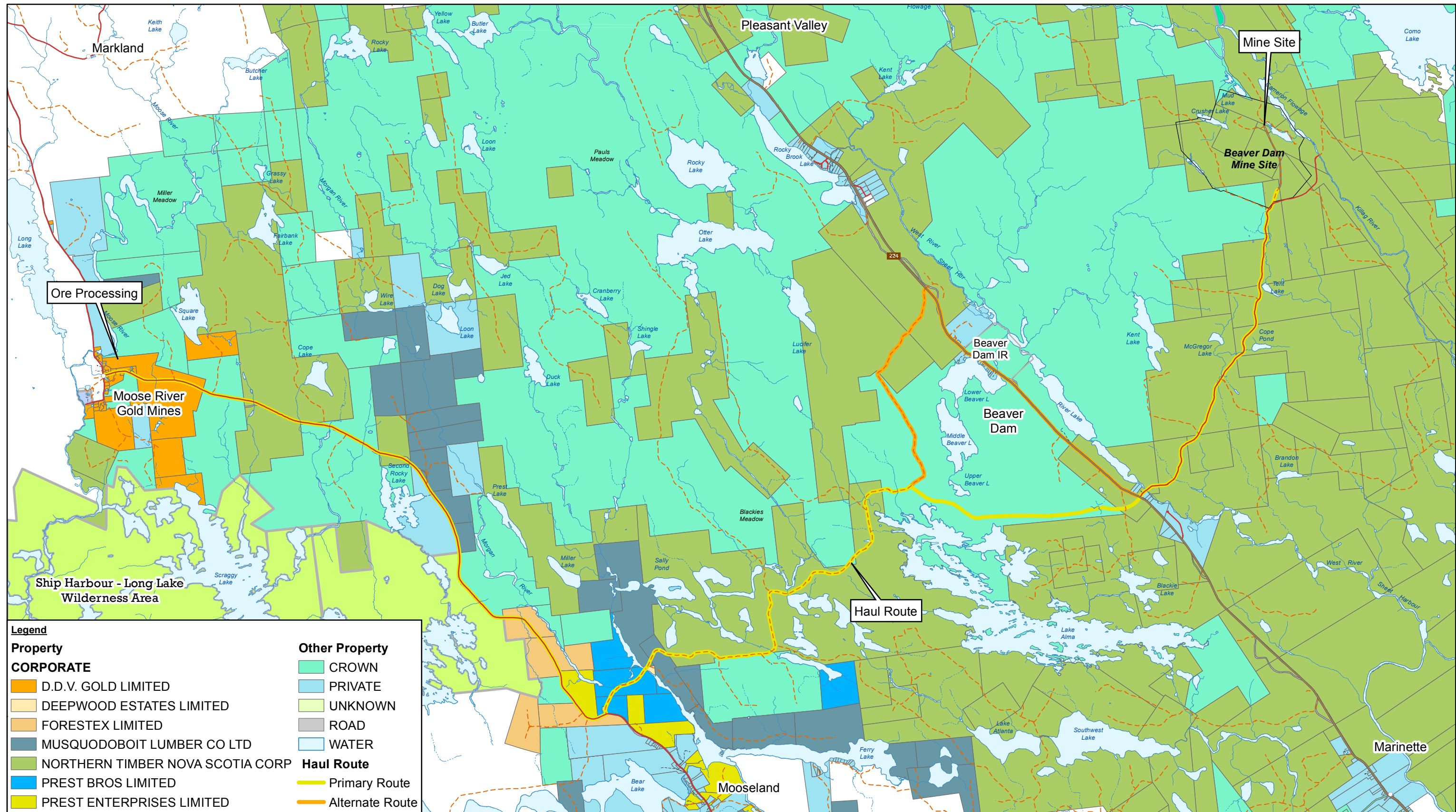


ATLANTIC GOLD CORPORATION  
MARINETTE, HALIFAX CO., NOVA SCOTIA  
ENVIRONMENTAL IMPACT STATEMENT - BEAVER DAM MINE

PROJECT LOCATION

088664 (004)  
Feb 24, 2017

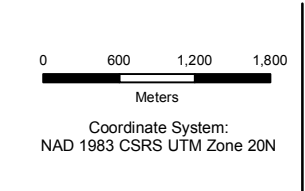
FIGURE 1.1-1



**Legend**

<b>Property</b>	<b>Other Property</b>
<b>CORPORATE</b>	CROWN
D.D.V. GOLD LIMITED	PRIVATE
DEEPWOOD ESTATES LIMITED	UNKNOWN
FORESTEX LIMITED	ROAD
MUSQUODOBOIT LUMBER CO LTD	WATER
NORTHERN TIMBER NOVA SCOTIA CORP	<b>Haul Route</b>
PREST BROS LIMITED	Primary Route
PREST ENTERPRISES LIMITED	Alternate Route

Source: Service Nova Scotia

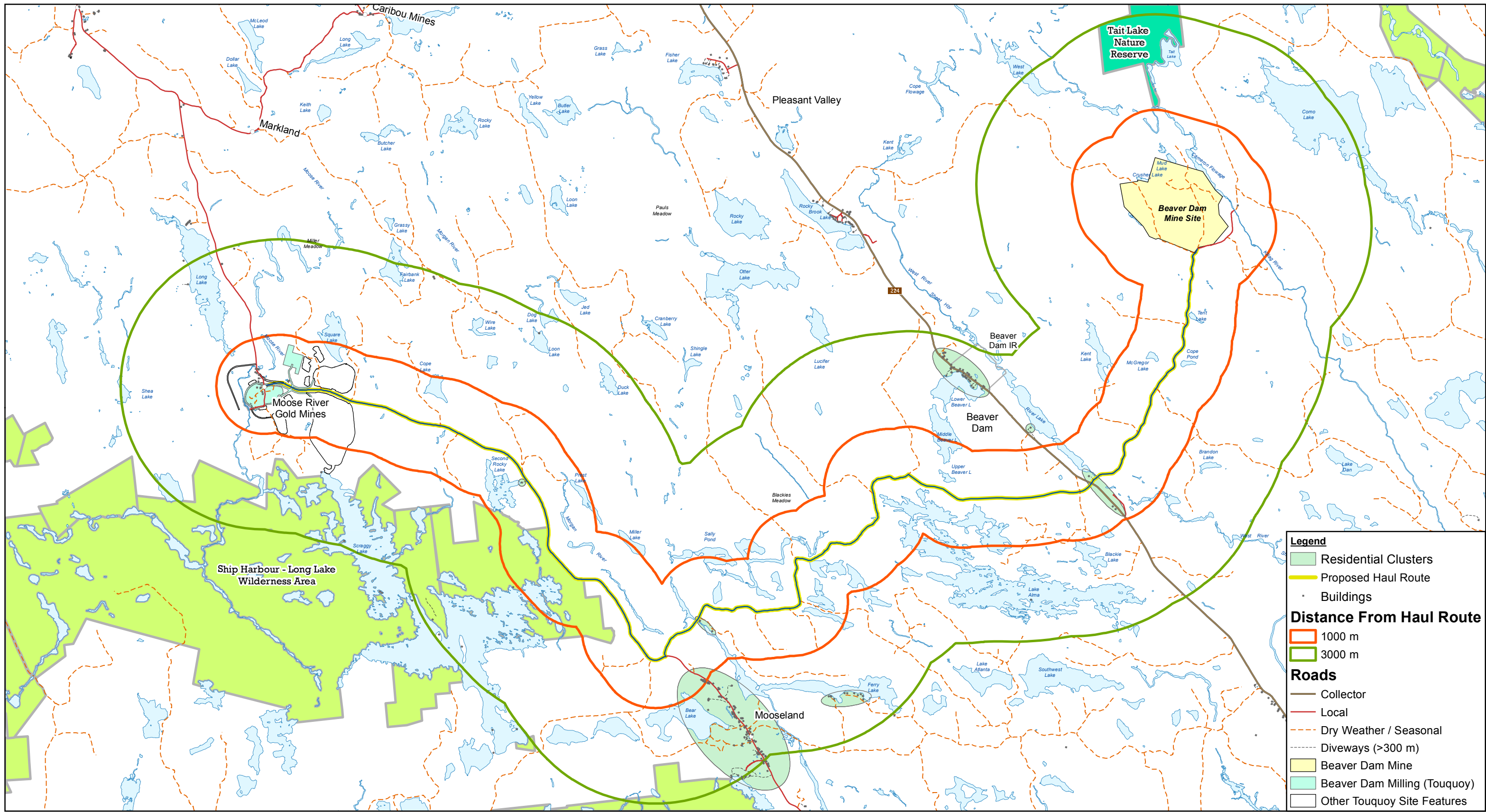


ATLANTIC GOLD CORPORATION  
 MARINETTE, HALIFAX CO., NOVA SCOTIA  
 ENVIRONMENTAL IMPACT STATEMENT - BEAVER DAM MINE

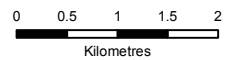
088664 (004)  
 Feb 24, 2017

**CURRENT PROPERTY OWNERSHIP**

**FIGURE 2.1-1**



Source: Service Nova Scotia, NS Natural Resources



Coordinate System:  
NAD 1983 CSRS UTM Zone 20N



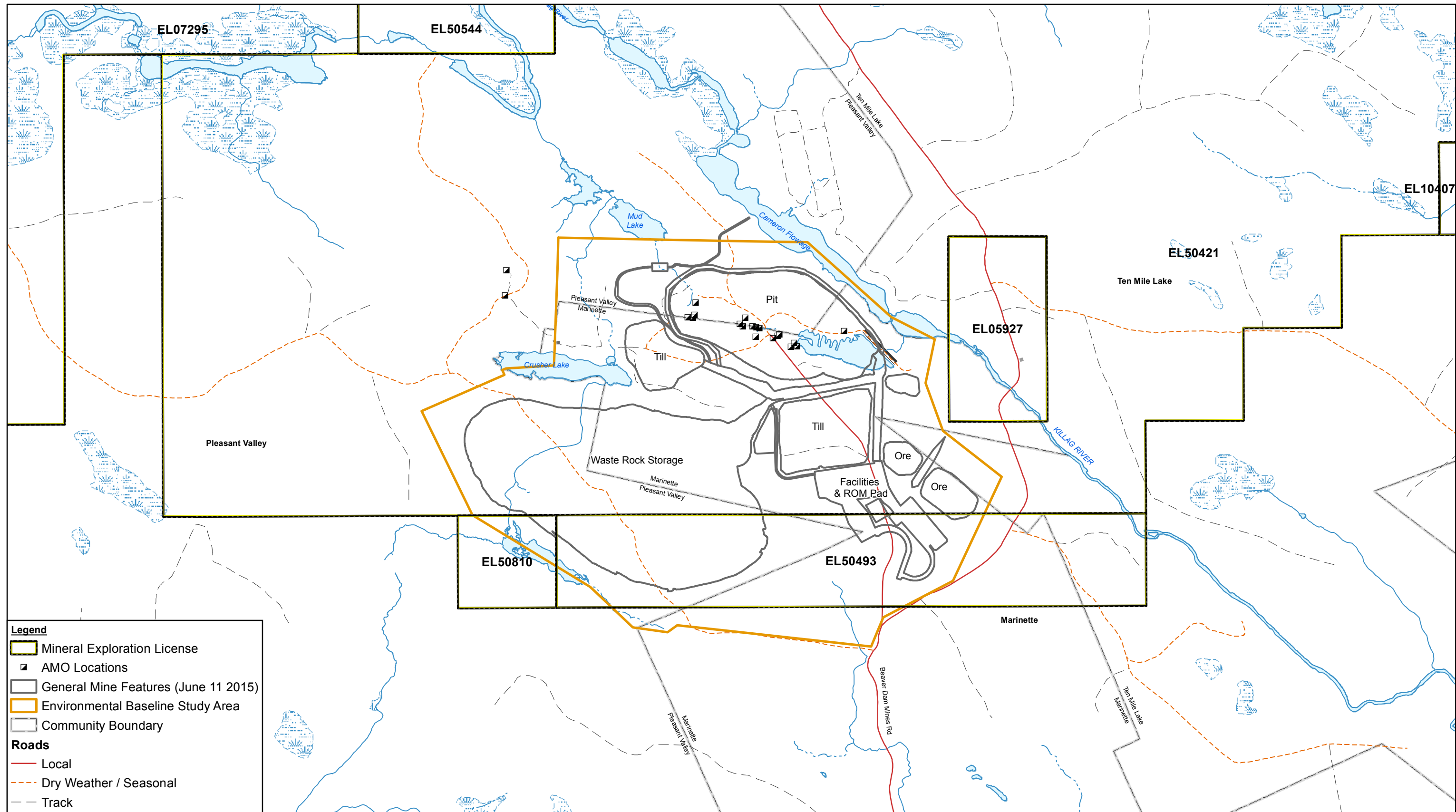
ATLANTIC GOLD CORPORATION  
MARINETTE, HALIFAX CO., NOVA SCOTIA  
ENVIRONMENTAL IMPACT STATEMENT - BEAVER DAM MINE

088664 (004)

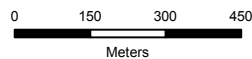
Feb 24, 2017

LOCATION OF RESIDENTS TO HAUL ROAD

FIGURE 2.1-2



Source: Service Nova Scotia, NS Natural Resources



Coordinate System:  
NAD 1983 CSRS UTM Zone 20N



ATLANTIC GOLD CORPORATION  
MARINETTE, HALIFAX CO., NOVA SCOTIA  
ENVIRONMENTAL IMPACT STATEMENT - BEAVER DAM MINE

088664 (004)  
Feb 24, 2017

EXPLORATION LICENCE BOUNDARIES

FIGURE 2.1-3



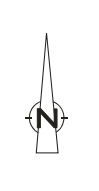
**Legend**

- Environmental Baseline Study Area
- Disturbed Mine Footprint
- Abandoned Mine Openings (AMOs)

Source: Atlantic Gold, Service Nova Scotia, NS Natural Resources, NS Environment

0 80 160 240  
Metres

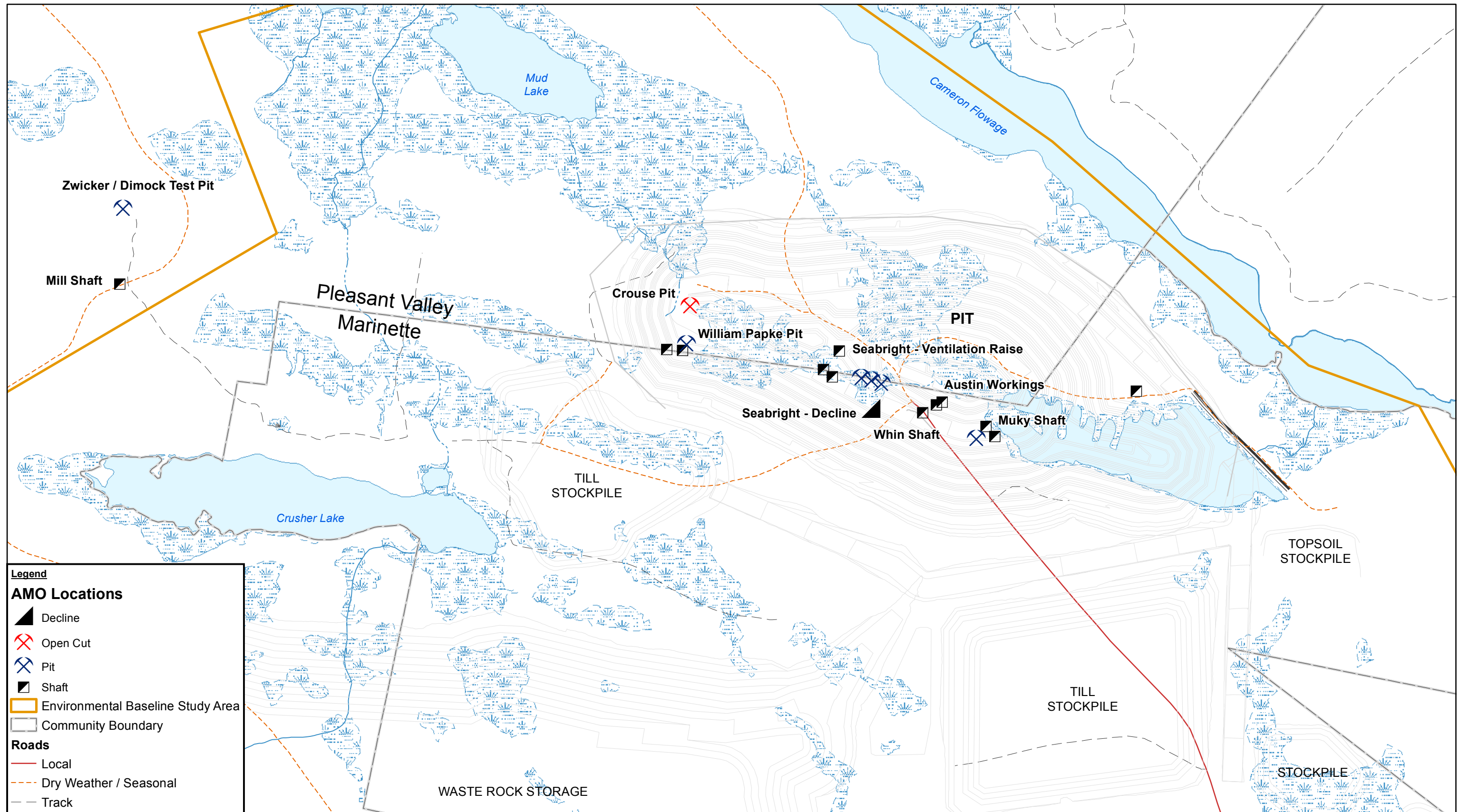
Coordinate System:  
NAD 1983 CSRS UTM Zone 20N



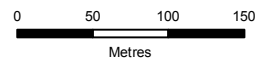
ATLANTIC GOLD CORPORATION  
MARINETTE, HALIFAX CO., NOVA SCOTIA  
ENVIRONMENTAL IMPACT STATEMENT - BEAVER DAM MINE  
**BEAVER DAM -  
EXISTING MINE CONDITIONS**

088664 (004)  
Feb 24, 2017

**FIGURE 2.1-4**



Source: Atlantic Gold, Service Nova Scotia, NS Natural Resources, NS Environment



Coordinate System:  
NAD 1983 CSRS UTM Zone 20N

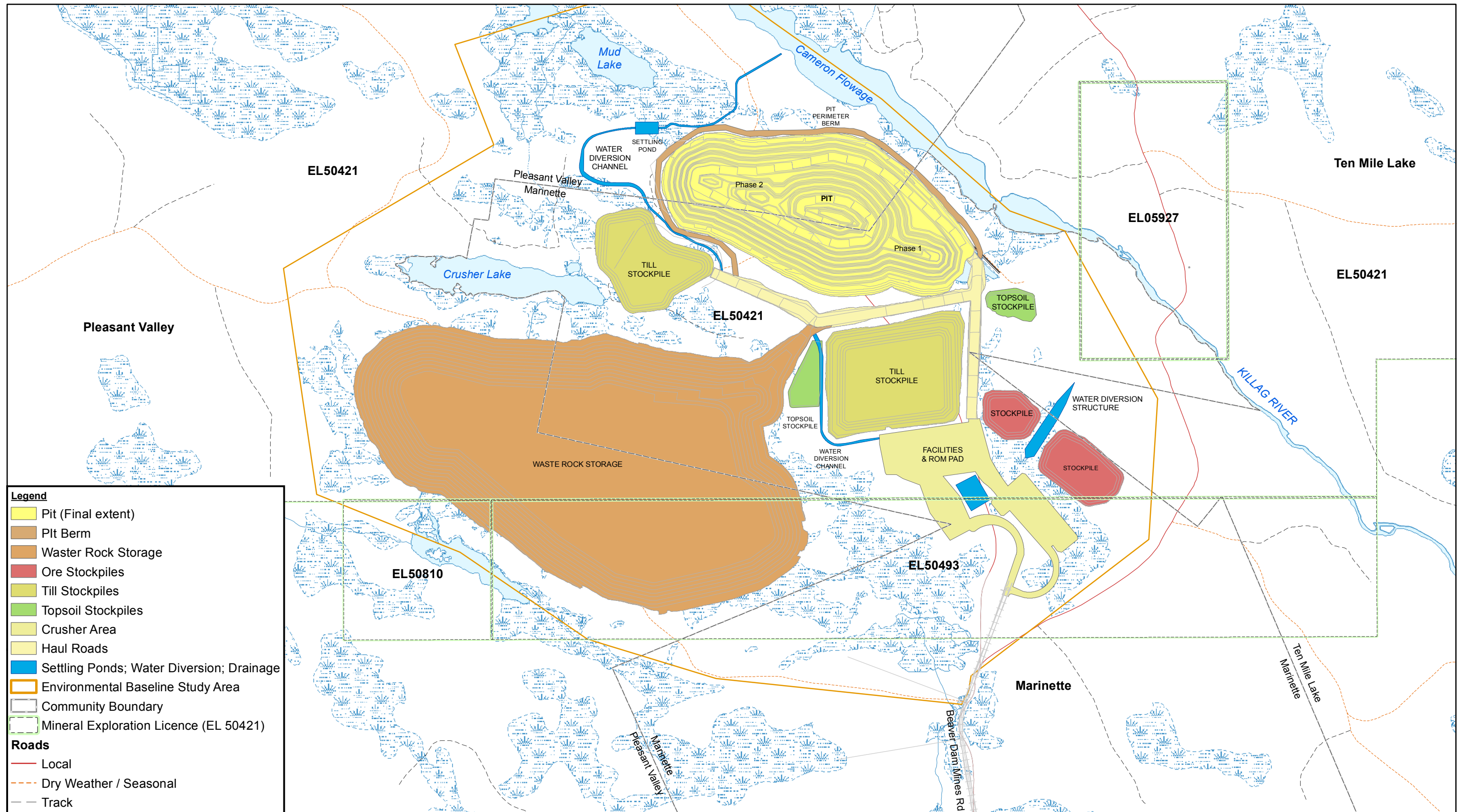


ATLANTIC GOLD CORPORATION  
MARINETTE, HALIFAX CO., NOVA SCOTIA  
ENVIRONMENTAL IMPACT STATEMENT - BEAVER DAM MINE

088664 (004)  
Feb 24, 2017

ABANDONED MINE WORKINGS

FIGURE 2.1-5



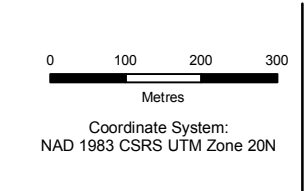
**Legend**

- Pit (Final extent)
- Pit Berm
- Waste Rock Storage
- Ore Stockpiles
- Till Stockpiles
- Topsoil Stockpiles
- Crusher Area
- Haul Roads
- Settling Ponds; Water Diversion; Drainage
- Environmental Baseline Study Area
- Community Boundary
- Mineral Exploration Licence (EL 50421)

**Roads**

- Local
- Dry Weather / Seasonal
- Track

Source: Atlantic Gold, Service Nova Scotia, NS Natural Resources, NS Environment

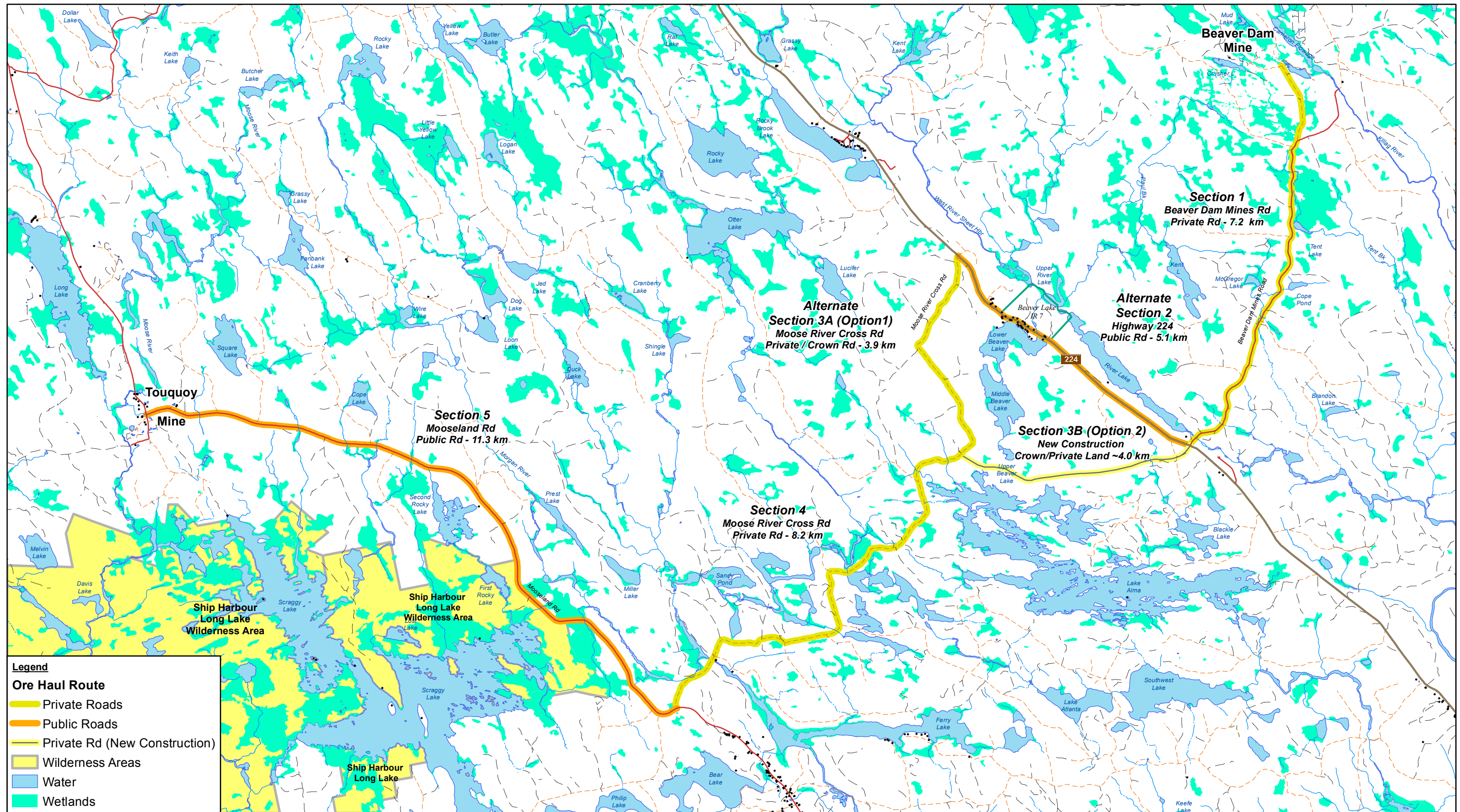


ATLANTIC GOLD CORPORATION  
 MARINETTE, HALIFAX CO., NOVA SCOTIA  
 ENVIRONMENTAL IMPACT STATEMENT - BEAVER DAM MINE

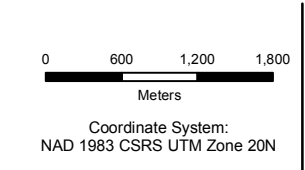
088664 (004)  
 Feb 24, 2017

GENERAL MINE ARRANGEMENT

FIGURE 2.2-1



Source: Service Nova Scotia (Water, Wetlands, Roads), NS Environment (Protected Areas), Atlantic Gold (Route)



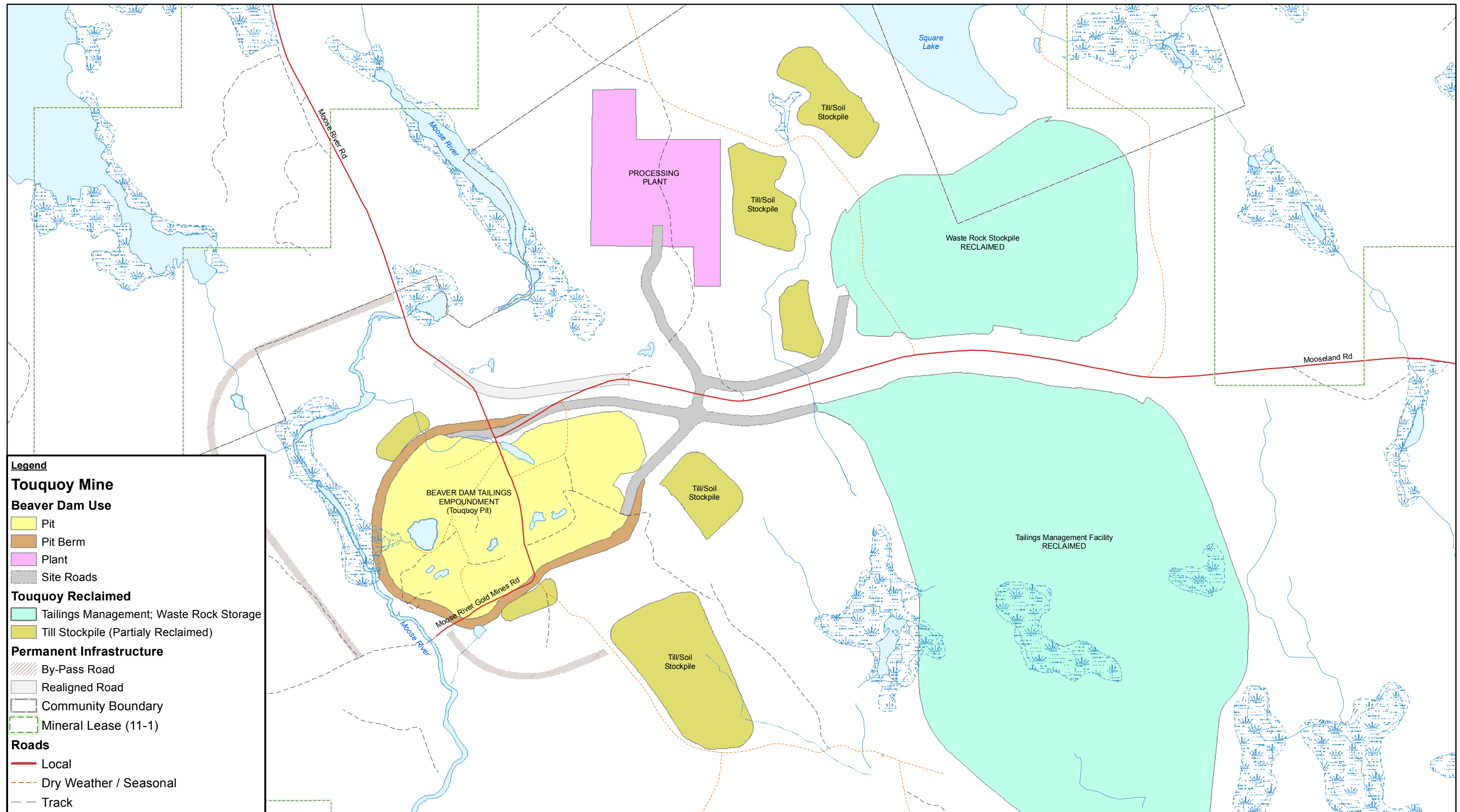
ATLANTIC GOLD CORPORATION  
MARINETTE, HALIFAX CO., NOVA SCOTIA  
ENVIRONMENTAL IMPACT STATEMENT - BEAVER DAM MINE

088664 (004)  
Feb 24, 2017

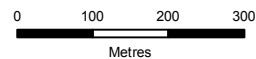
HAUL ROAD ROUTE WITH ALTERNATES

FIGURE 2.2-2





Source: Atlantic Gold, Service Nova Scotia, NS Natural Resources, NS Environment



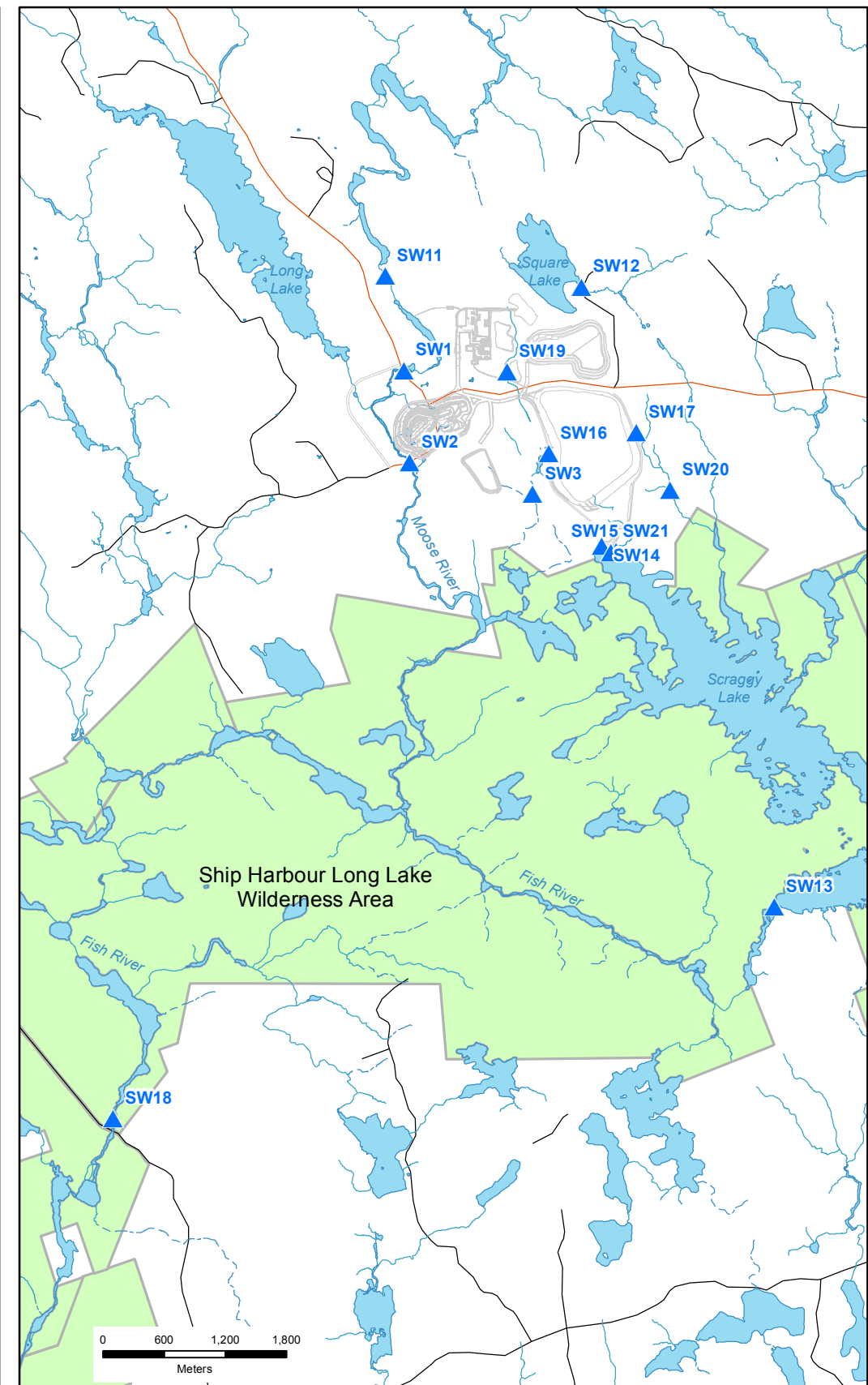
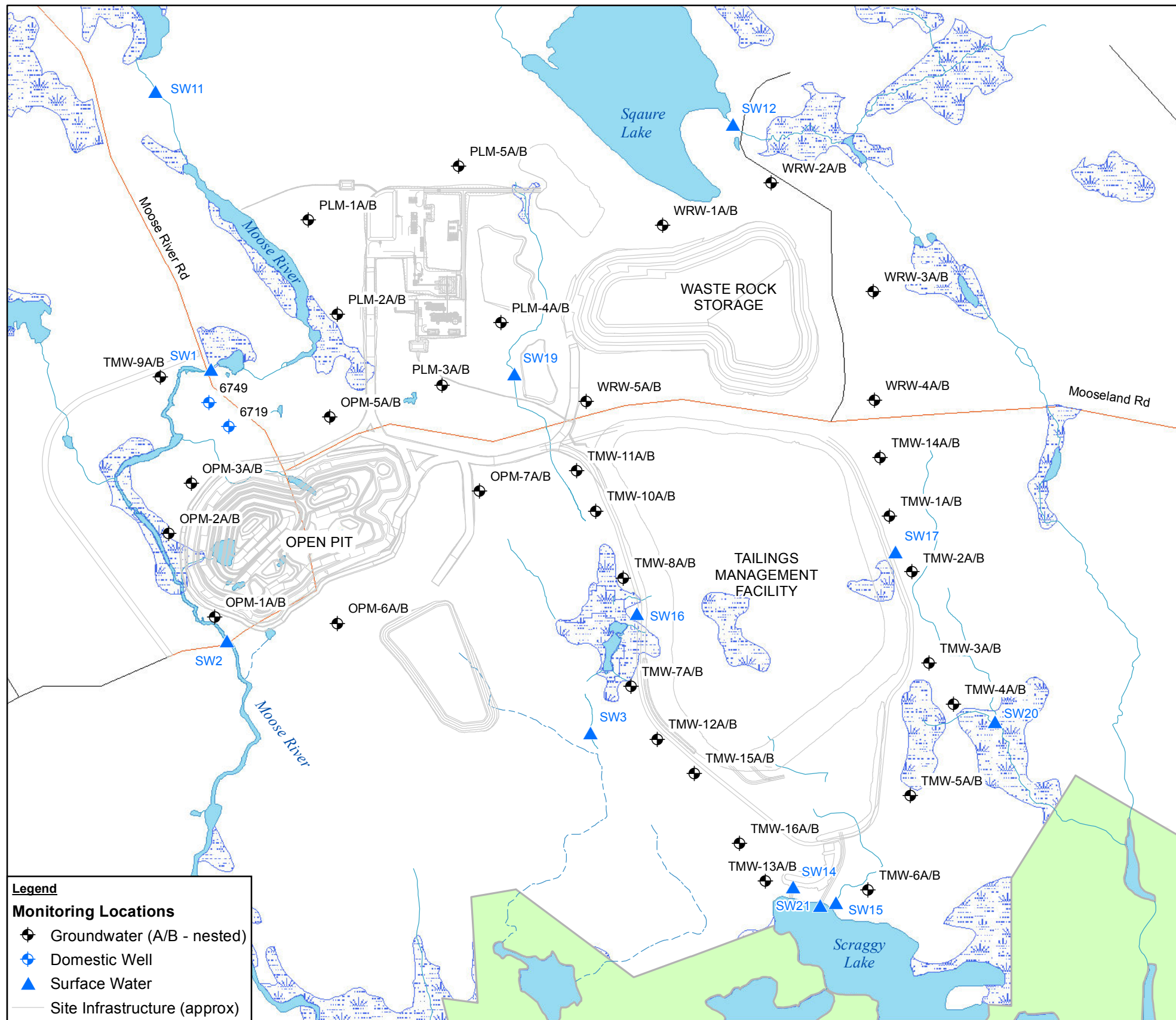
Coordinate System:  
NAD 1983 CSRS UTM Zone 20N



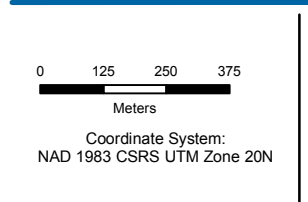
ATLANTIC GOLD CORPORATION  
MARINETTE, HALIFAX CO., NOVA SCOTIA  
ENVIRONMENTAL IMPACT STATEMENT - BEAVER DAM MINE  
TOUQUOY MINE - GENERAL ARRANGEMENT  
FOR BEAVER DAM ORE PROCESSING

088664 (004)  
Mar 24, 2017

FIGURE 2.2-3



Source: Service Nova Scotia, AGC, Stantec, GHD



ATLANTIC GOLD CORPORATION  
 MARINETTE, HALIFAX CO., NOVA SCOTIA  
 ENVIRONMENTAL IMPACT STATEMENT - BEAVER DAM MINE  
 TOUQUOY MINE  
 COMPLIANCE MONITORING LOCATIONS

088664 (004)  
 Jun 9, 2017

FIGURE 2.2-4