

**Bear Lake Wind Power Project**  
*Invertebrate ACCDC Data and Significant Species/  
 Habitat*



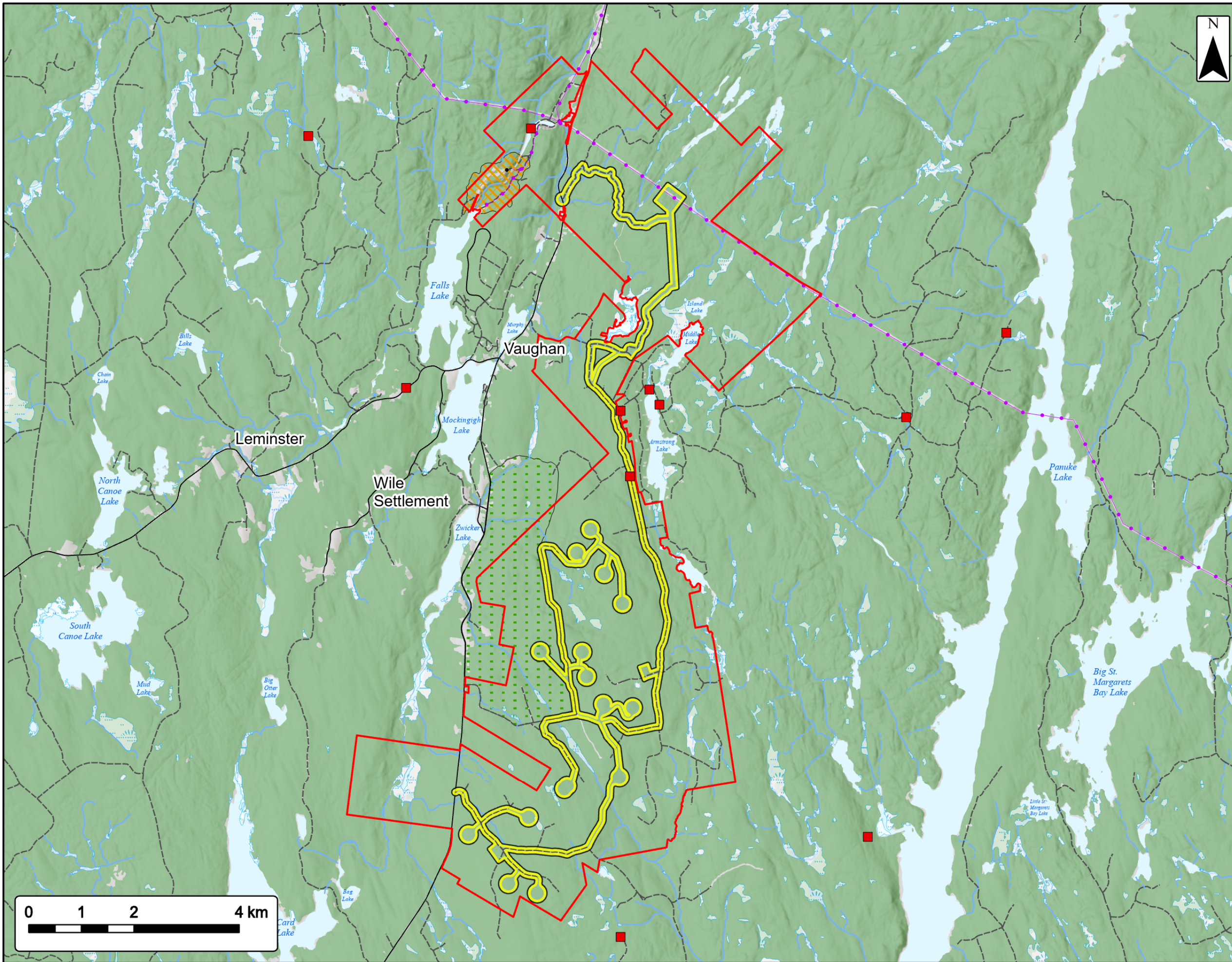
Study Area	
Assessment Area	
ACCDC Pt. Data	
Invertebrate Fauna	
<b>Significant Species &amp; Habitats (NSNRR)</b>	
Deer Wintering	
Other Habitat	
<b>Utilities (line)</b>	
Existing Pipeline	
Existing Transmission Lines	
<b>Transportation</b>	
Road	
Unpaved Road	
<b>Water Features</b>	
Mapped Stream	
Mapped Indefinite Stream	
Mapped Lakes and Rivers	
Mapped Wet Area	



Coordinate System: NAD83 UTM Zone 20N  
 Sources: Esri Basemaps, GeoNOVA, SNSIS, NRCan, NSNRR, ACCDC, IBA Canada

Date:	Oct 2023	Project #:	23-9128
Scale:	1:70,000	Drawing #:	<b>7.19A</b>
Drawn By:	K. Wallace		
Checked By:	M. Savelle		





# Bear Lake Wind Power Project

Vertebrate ACCDC Data and Significant Species/  
Habitat

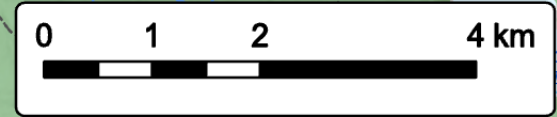


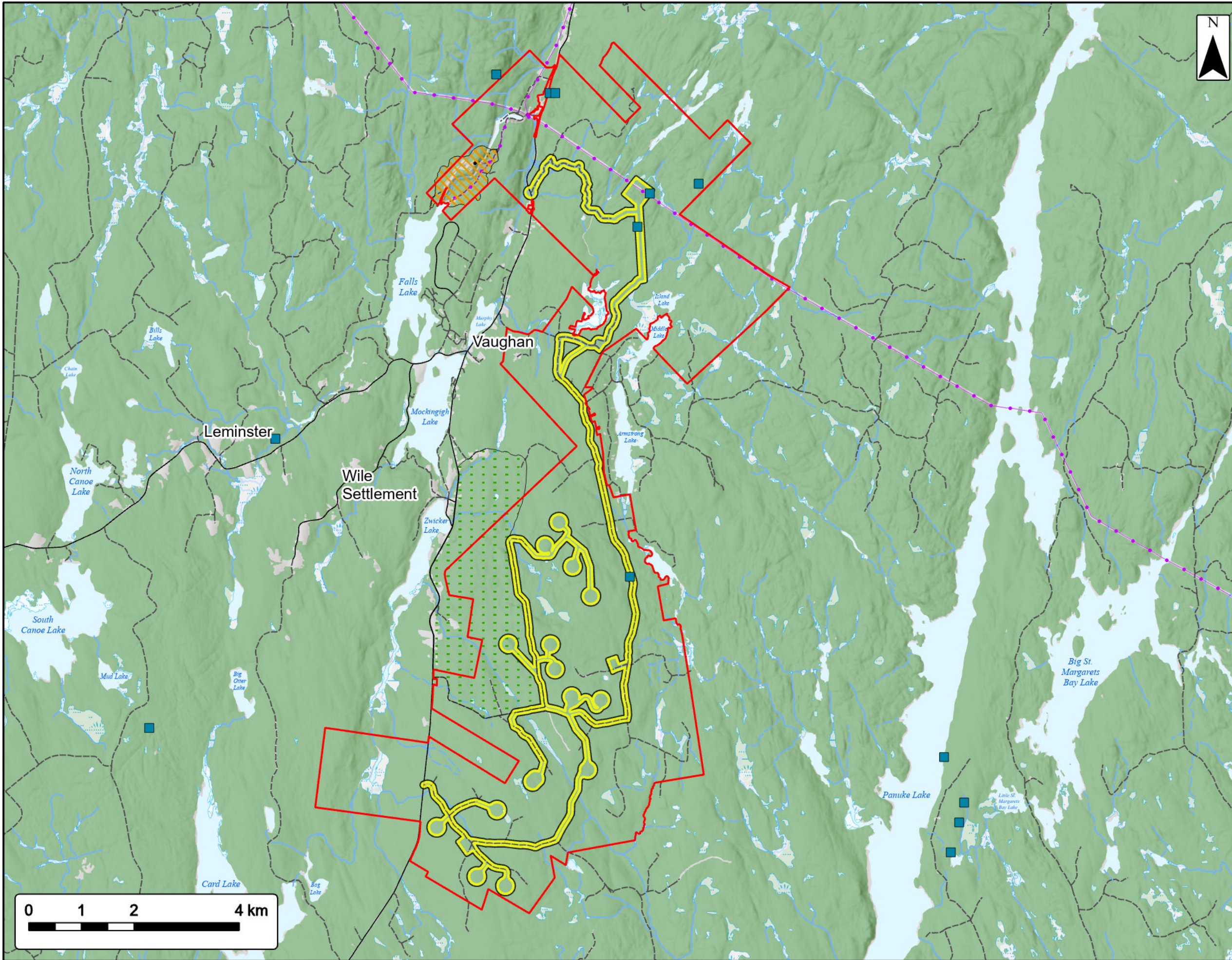
Study Area	
Assessment Area	
<b>ACCDC Pt. Data</b>	
Vertebrate Fauna	
<b>Significant Species &amp; Habitats (NSNRR)</b>	
Deer Wintering	
Other Habitat	
<b>Utilities (line)</b>	
Existing Pipeline	
Existing Transmission Lines	
<b>Transportation</b>	
Road	
Unpaved Road	
<b>Water Features</b>	
Mapped Stream	
Mapped Indefinite Stream	
Mapped Lakes and Rivers	
Mapped Wet Area	



Coordinate System: NAD83 UTM Zone 20N  
Sources: Esri Basemaps, GeoNOVA, SNSIS, NRCan, NSNRR, ACCDC, IBA Canada

Date:	Oct 2023	Project #:	23-9128
Scale:	1:70,000	Drawing #:	<b>7.19B</b>
Drawn By:	K. Wallace		
Checked By:	M. Savelle		





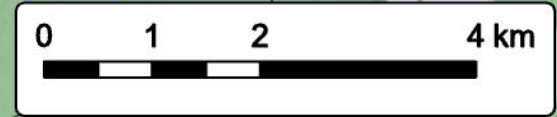
**Bear Lake Wind Power Project**  
 Nonvascular ACCDC Data and Significant Species/  
 Habitat

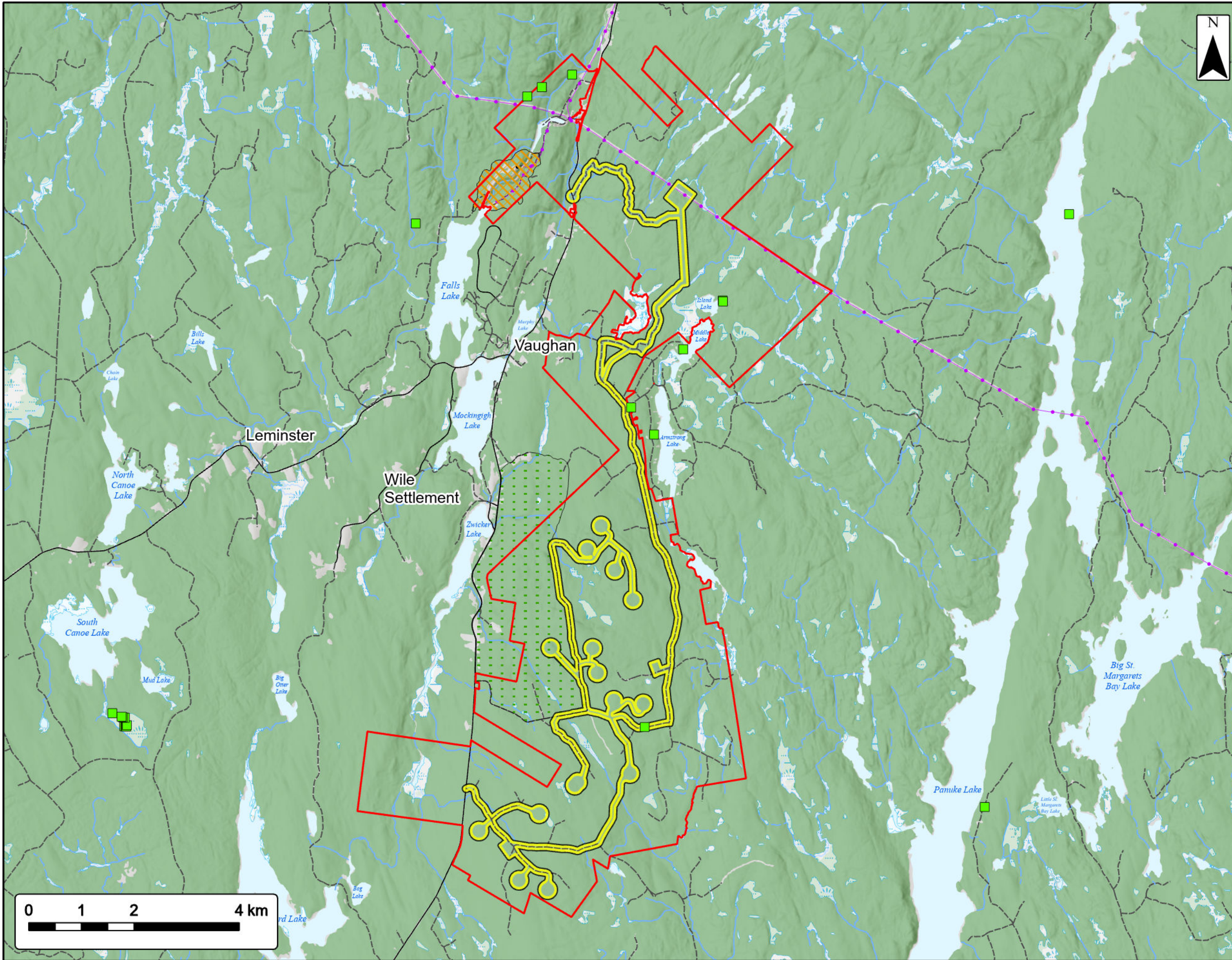


Study Area	
Assessment Area	
ACDC Pt. Data	
Nonvascular Flora	
Significant Species & Habitats (NSNRR)	
Deer Wintering	
Other Habitat	
Utilities (line)	
Existing Pipeline	
Existing Transmission Lines	
Transportation	
Road	
Unpaved Road	
Water Features	
Mapped Stream	
Mapped Indefinite Stream	
Mapped Lakes and Rivers	
Mapped Wet Area	



Coordinate System: NAD83 UTM Zone 20N		Sources: Eri Basemaps, GeoNOVA, SNSIS, NRCAN, NSNRR, ACCDC, IBA Canada	
Date:	Oct 2023	Project #:	23-9128
Scale:	1:70,000	Drawing #:	<b>7.19C</b>
Drawn By:	K. Wallace		
Checked By:	M. Savelle		





**Bear Lake Wind Power Project**  
*Vascular ACCDC Data and Significant Species/  
 Habitat*



Study Area	
Assessment Area	
<b>ACCDC Pt. Data</b>	
Vascular Flora	
<b>Significant Species &amp; Habitats (NSNRR)</b>	
Deer Wintering	
Other Habitat	
<b>Utilities (line)</b>	
Existing Pipeline	
Existing Transmission Lines	
<b>Transportation</b>	
Road	
Unpaved Road	
<b>Water Features</b>	
Mapped Stream	
Mapped Indefinite Stream	
Mapped Lakes and Rivers	
Mapped Wet Area	



Coordinate System: NAD83 UTM Zone 20N  
 Sources: Esri Basemaps, GeoNOVA, SNSIS, NRCAN, NSNRR, ACCDC, IBA Canada

Date:	Oct 2023	Project #:	23-9128
Scale:	1:70,000	Drawing #:	<b>7.19D</b>
Drawn By:	K. Wallace		
Checked By:	M. Savelle		

