

# Bear Lake Wind Power Project

Watersheds

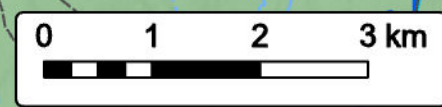


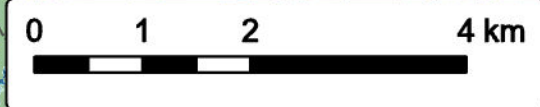
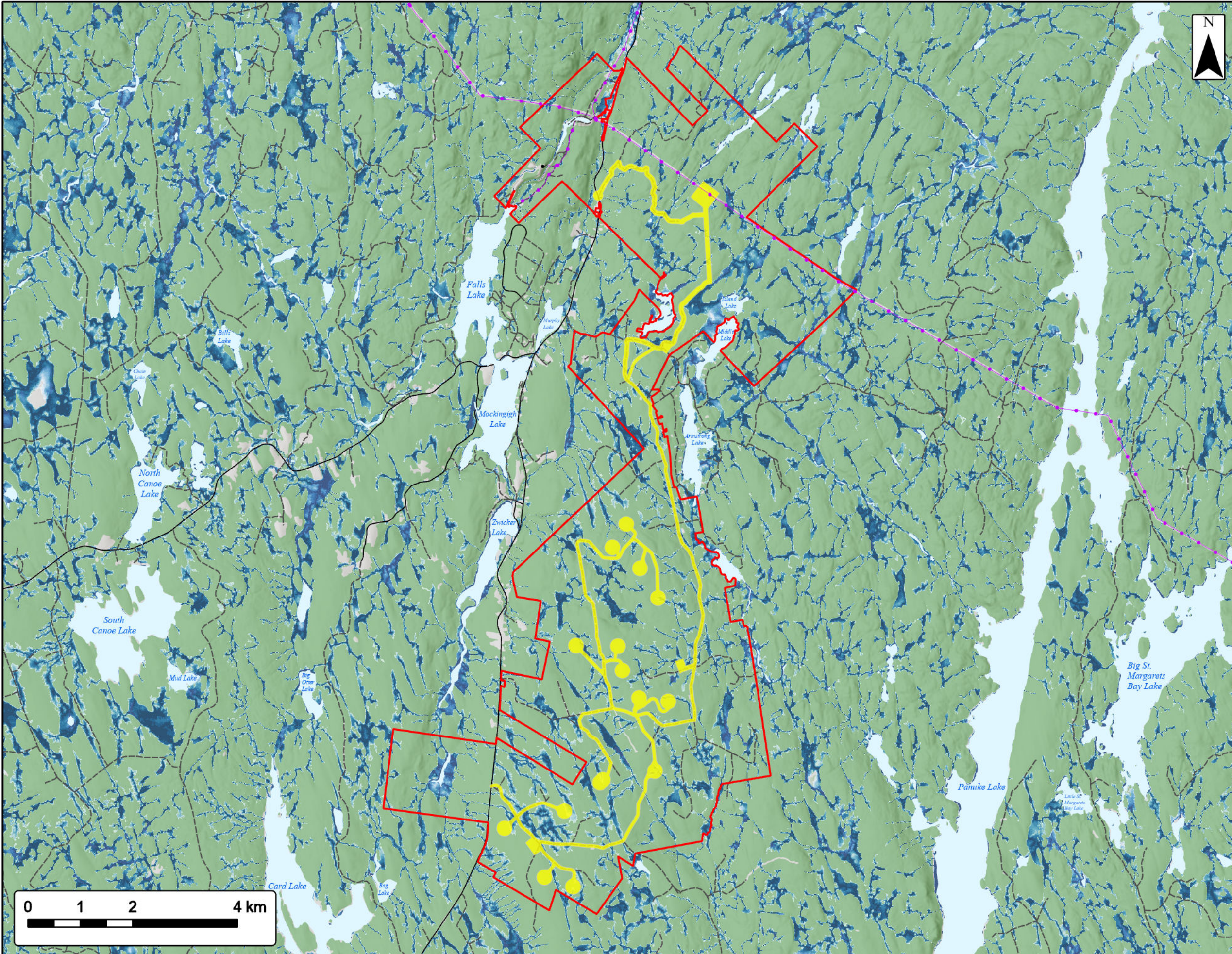
- Study Area
- Assessment Area
- Primary Watershed Boundary
- Secondary Watershed Boundary
- Utilities (Line)**
- Existing Pipeline
- Existing Transmission Lines
- Transportation**
- Trans-Canada Highway
- Highway
- Road
- Unpaved Road
- Water Features**
- Mapped Stream
- Mapped Indefinite Stream
- Mapped Lakes and Rivers
- Mapped Wet Area



Coordinate System: NAD83 UTM Zone 20N Sources: ESRI Basemaps, GeoNOVA, SNSIS, NRCan, NSNRR, ACCDC, IBA Canada

Date: Oct 2023	Project #: 23-9128
Scale: 1:70,000	Drawing #: <b>7.12</b>
Drawn By: K. Wallace	
Checked By: M. Savelle	





# Bear Lake Wind Power Project

## Wet Area Mapping



**Study Area**

**Assessment Area**

**Depth to Water (cm)**

- 0 - 10
- 10 - 20
- 20 - 30
- 30 - 40
- 40 - 50
- 50 - 60
- 60 - 70
- 70 - 80
- 80 - 90
- 90 - 100

**Utilities (line)**

- Existing Pipeline
- Existing Transmission Lines

**Transportation**

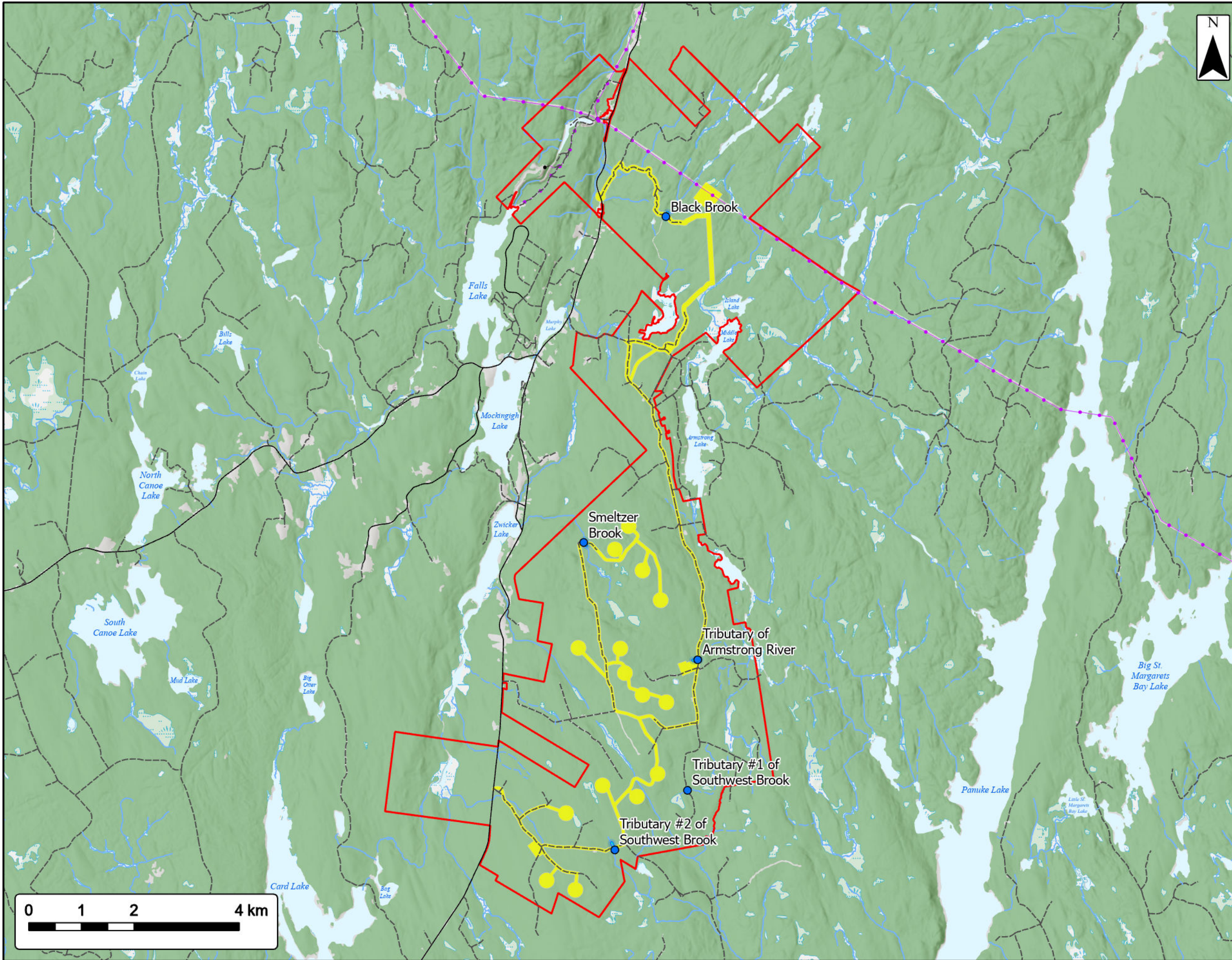
- Road
- Unpaved Road
- Mapped Lakes and Rivers



Coordinate System: NAD83 UTM Zone 20N  
 Sources: ESRI Basemaps, GeoNOVA, GNIS, NRCan, NSNRR, ACCDC, IBA Canada

Date:	Oct 2023	Project #:	23-9128
Scale:	1:70,000	Drawing #:	<b>7.13</b>
Drawn By:	K. Wallace		
Checked By:	M. Savelle		





# Bear Lake Wind Power Project

## Fish Habitat



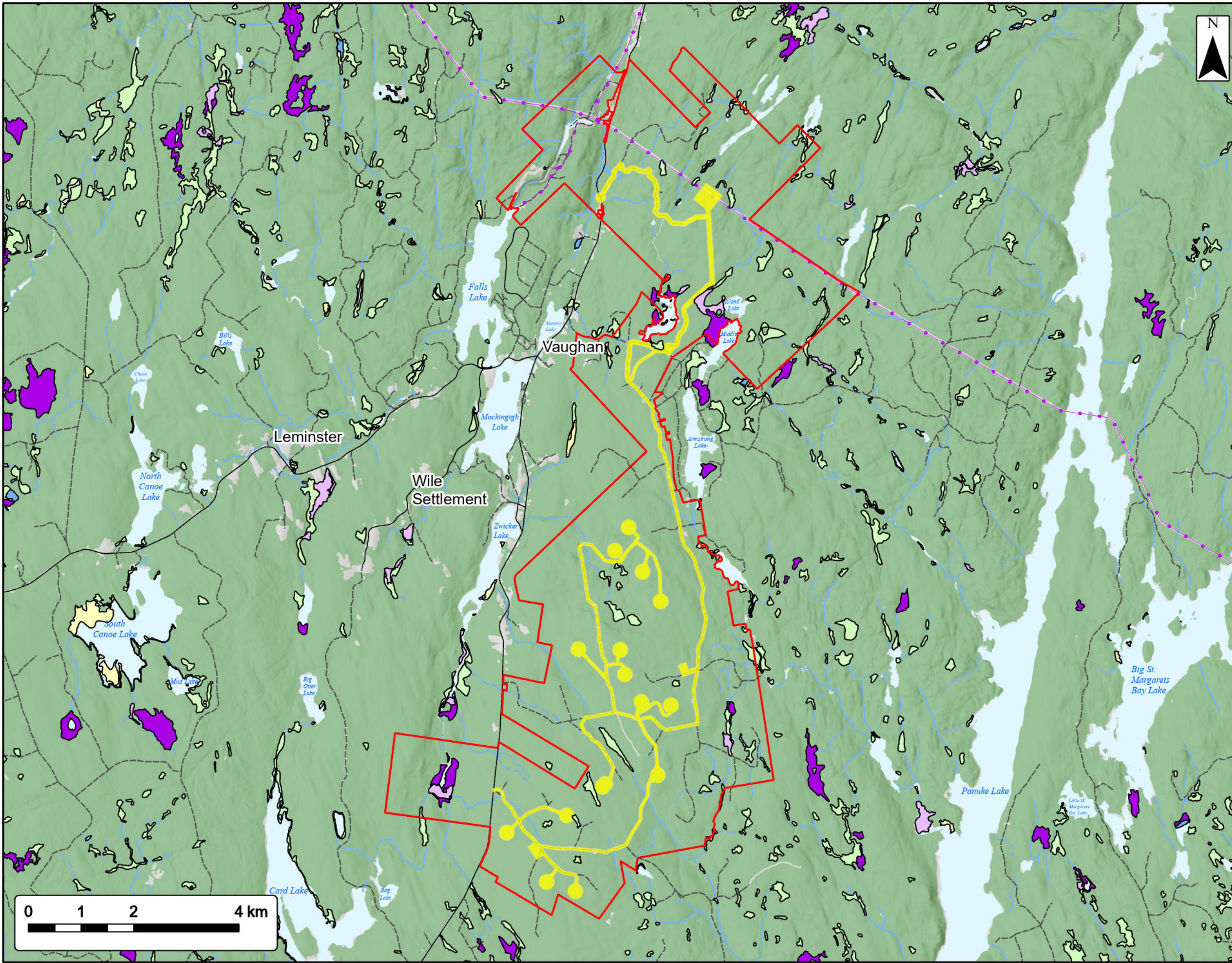
Study Area	
Assessment Area	
Electrofished Pt. Locations	
Field Assessed Watercourse	
<b>Transportation</b>	
Road	
Unpaved Road	
<b>Utilities (line)</b>	
Existing Pipeline	
Existing Transmission Lines	
<b>Water Features</b>	
Mapped Stream	
Mapped Indefinite Stream	
Mapped Lakes and Rivers	
Mapped Wet Area	



Coordinate System: NAD83 UTM Zone 20N Sources: ESRI Basemaps, GeoNOVA, SNSIS, NRCan, NSNRR, ACCDC, IBA Canada

Date:	Oct 2023	Project #:	23-9128
Scale:	1:70,000	Drawing #:	<b>7.14</b>
Drawn By:	K. Wallace		
Checked By:	M. Savelle		





# Bear Lake Wind Power Project

NSNRR Wetlands Data

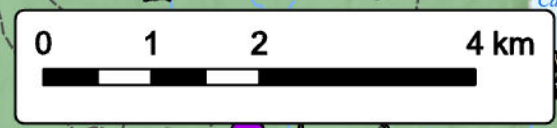


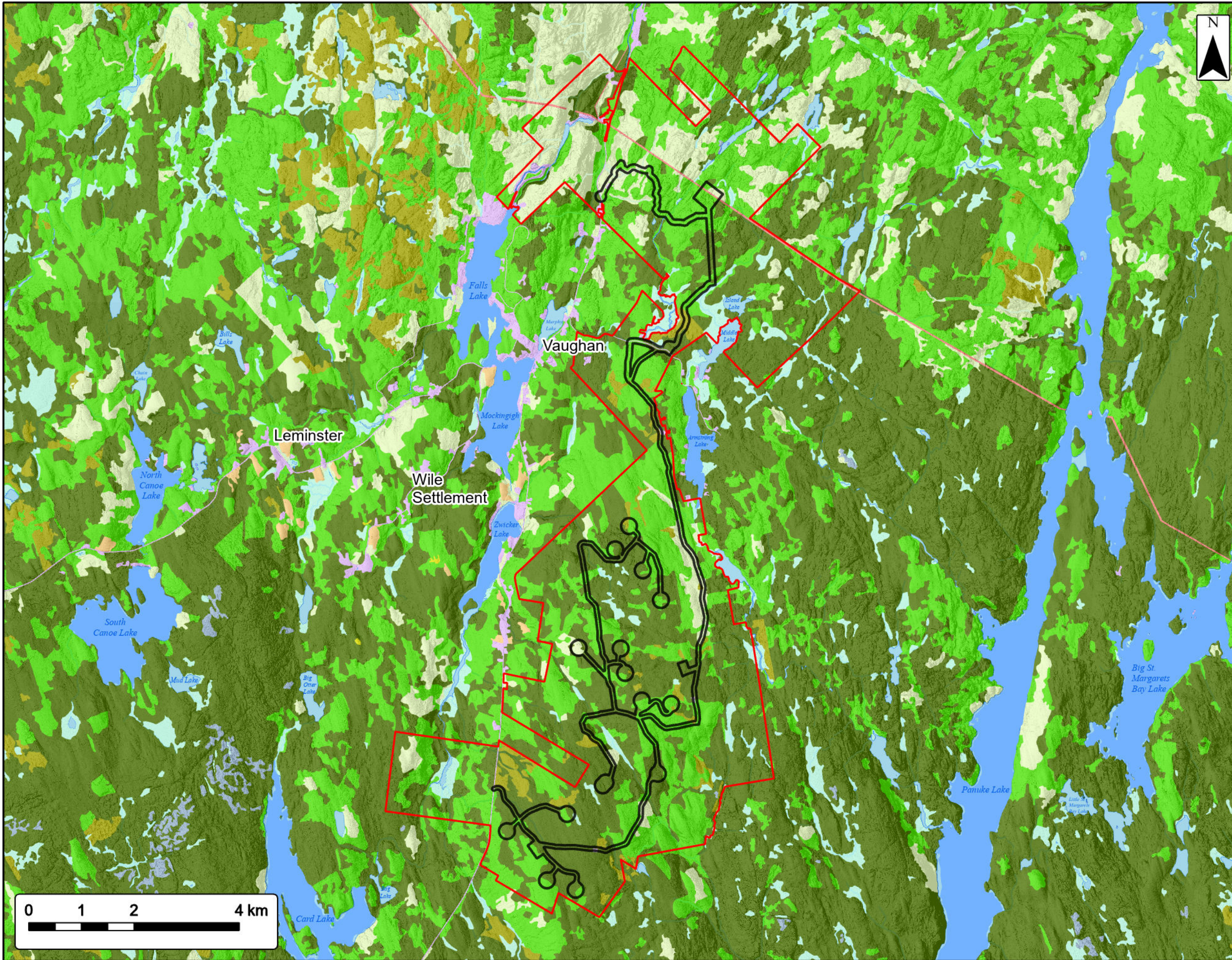
Study Area	
Assessment Area	
<b>NSNRR Wetland Inventory</b>	
Bog or Fen	
Fen	
Marsh	
Swamp	
Water	
<b>Transportation</b>	
Road	
Unpaved Road	
<b>Utilities (line)</b>	
Existing Pipeline	
Existing Transmission Lines	
<b>Water Features</b>	
Mapped Stream	
Mapped Indefinite Stream	
Mapped Lakes and Rivers	



Coordinate System: NAD83 UTM Zone 20N  
 Sources: ESRI Basemaps, GeoNOVA, SNSIS, NRCan, NSNRR, ACCDC, ISA Canada

Date:	Oct 2023	Project #:	23-9128
Scale:	1:70,000	Drawing #:	<b>7.15</b>
Drawn By:	K. Wallace		
Checked By:	M. Savelle		





# Bear Lake Wind Power Project

Land Cover



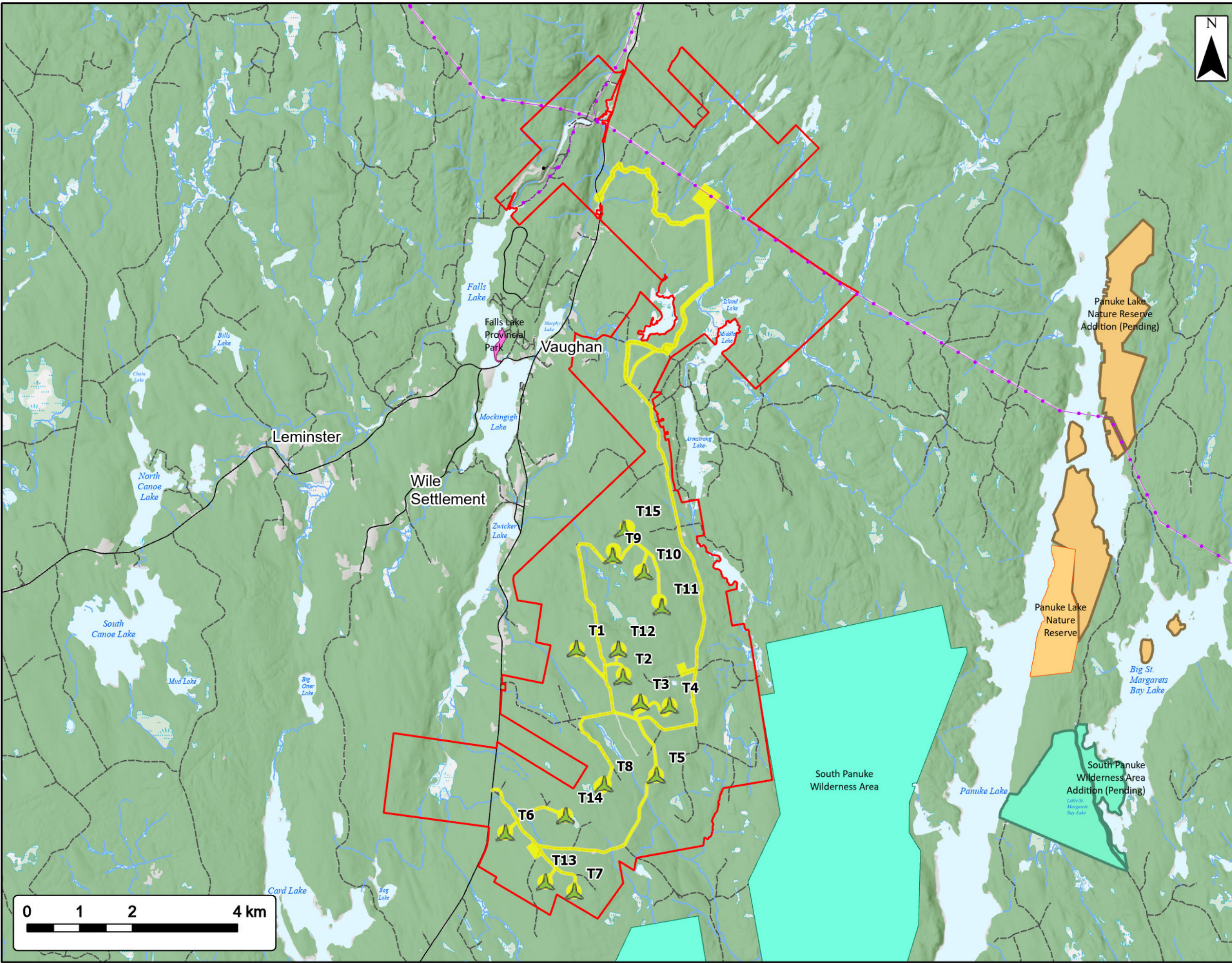
Study Area	
Assessment Area	
Mapped Lakes and Rivers	
Agriculture	
Blueberries or Barren	
Bogs or Wetlands	
Brush	
Hardwood	
Harvests	
Mixedwood	
Old Field	
Softwood	
Urban, Landfill, Quarry, Transport Corridor	
Utility Corridor	
Water	



Coordinate System: NAD83 UTM Zone 20N  
Sources: ESRI Basemaps, GeoNOVA, SNSIS, NRCan, NSNRR, ACCDC, IBA Canada

Date:	Oct 2023	Project #:	23-9128
Scale:	1:70,000	Drawing #:	<b>7.16</b>
Drawn By:	K. Wallace		
Checked By:	M. Savelle		





# Bear Lake Wind Power Project

## Protected Areas



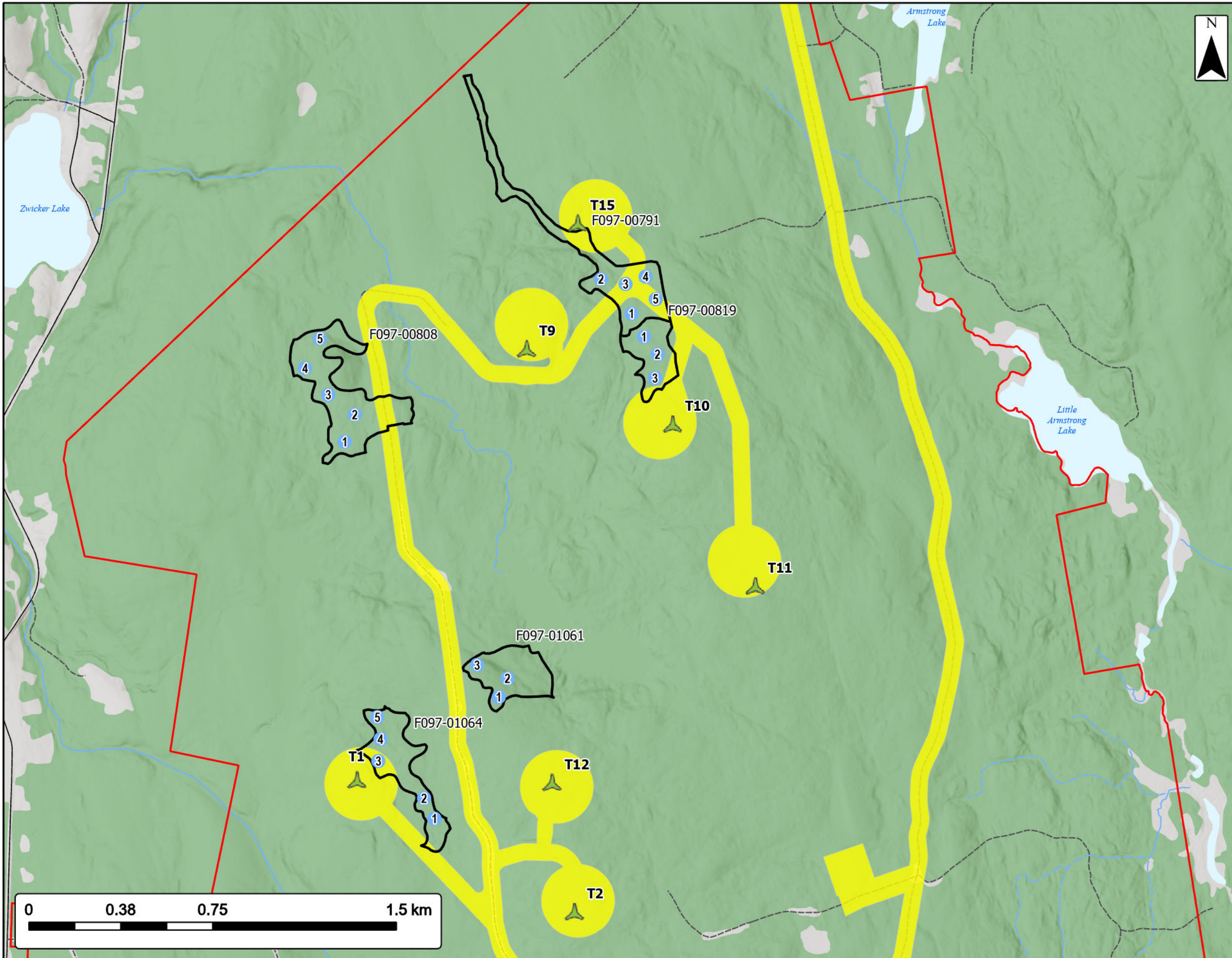
Study Area	
Assessment Area	
Proposed Turbine Location	
<b>Type of Existing Protection</b>	
Nature Reserve	
Wilderness Area	
Provincial Park	
<b>Type of Pending or Proposed Protection</b>	
Nature Reserve	
Wilderness Area	
<b>Utilities (line)</b>	
Existing Pipeline	
Existing Transmission Lines	
<b>Transportation</b>	
Road	
Unpaved Road	
<b>Water Features</b>	
Mapped Stream	
Mapped Indefinite Stream	
Mapped Lakes and Rivers	
Mapped Wet Area	



Coordinate System: NAD83 UTM Zone 20N  
 Sources: ESRI Basemaps, GeoNOVA, SNSIS, NRCAN, NSNRR, ACCDC, IBA Canada

Date:	Oct 2023	Project #:	23-9128
Scale:	1:70,000	Drawing #:	<b>7.17</b>
Drawn By:	K. Wallace		
Checked By:	M. Savelle		



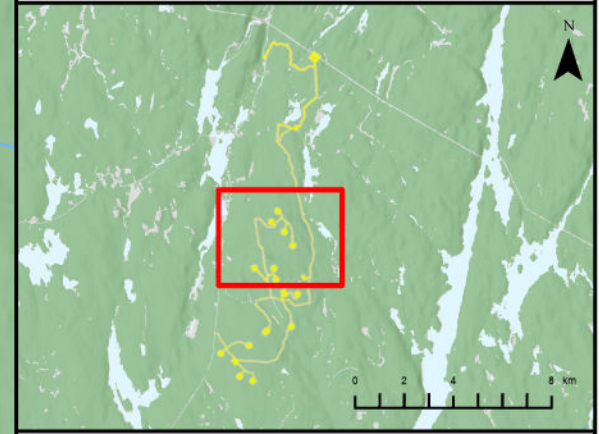


# Bear Lake Wind Power Project

Old Growth



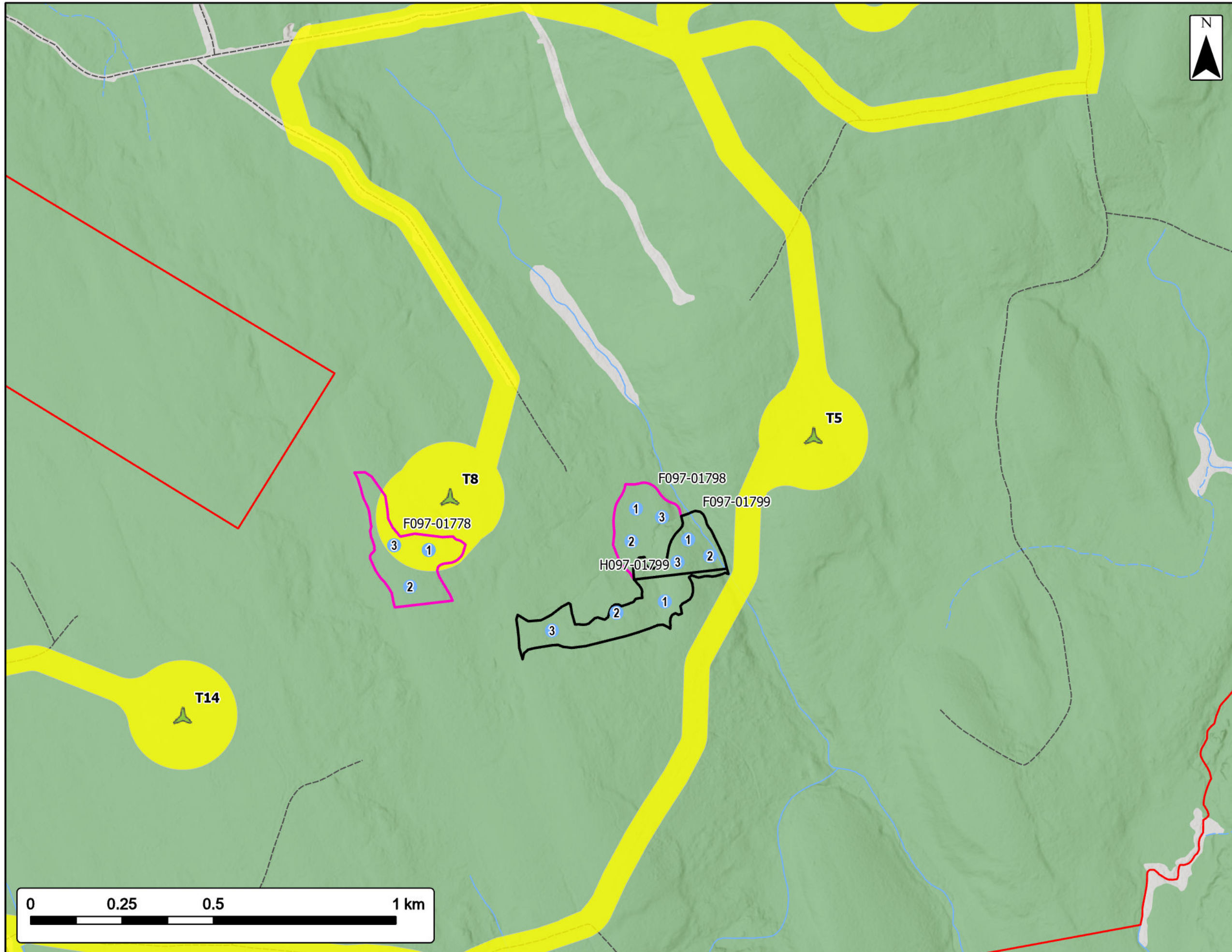
Study Area	
Assessment Area	
Proposed Turbine Location	
Plot Location	
Field Confirmed Not Old Growth	
<b>Transportation</b>	
Road	
Unpaved Road	
<b>Water Features</b>	
Mapped Stream	
Mapped Indefinite Stream	
Mapped Lakes and Rivers	



Coordinate System: NAD83 UTM Zone 20N Sources: ESRI Basemaps, GeoNOVA, SNSIS, NRCan, NSNRR, ACCDC, IBA Canada

Date:	Oct 2023	Project #:	23-9128
Scale:	1:15,000	Drawing #:	<b>7.18A</b>
Drawn By:	K. Wallace		
Checked By:	M. Savelle		



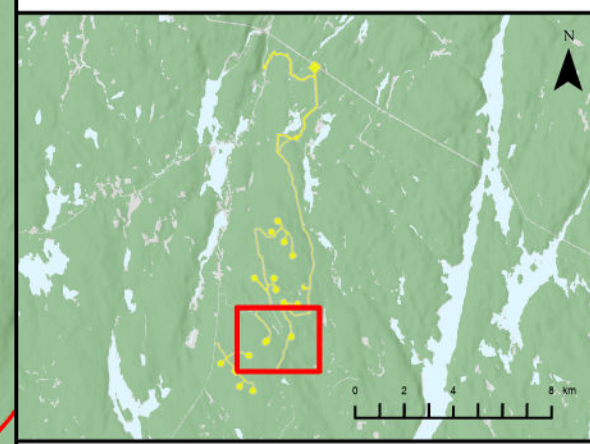


# Bear Lake Wind Power Project

Old Growth

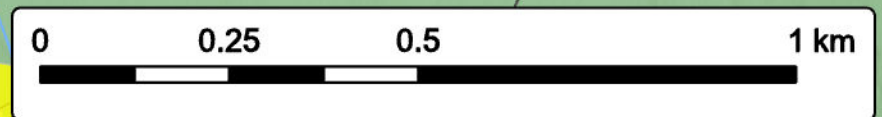


Study Area	
Assessment Area	
Proposed Turbine Location	
Plot Location	
Field Confirmed Not Old Growth	
Field Confirmed Old Growth	
<b>Transportation</b>	
Unpaved Road	
<b>Water Features</b>	
Mapped Stream	
Mapped Indefinite Stream	

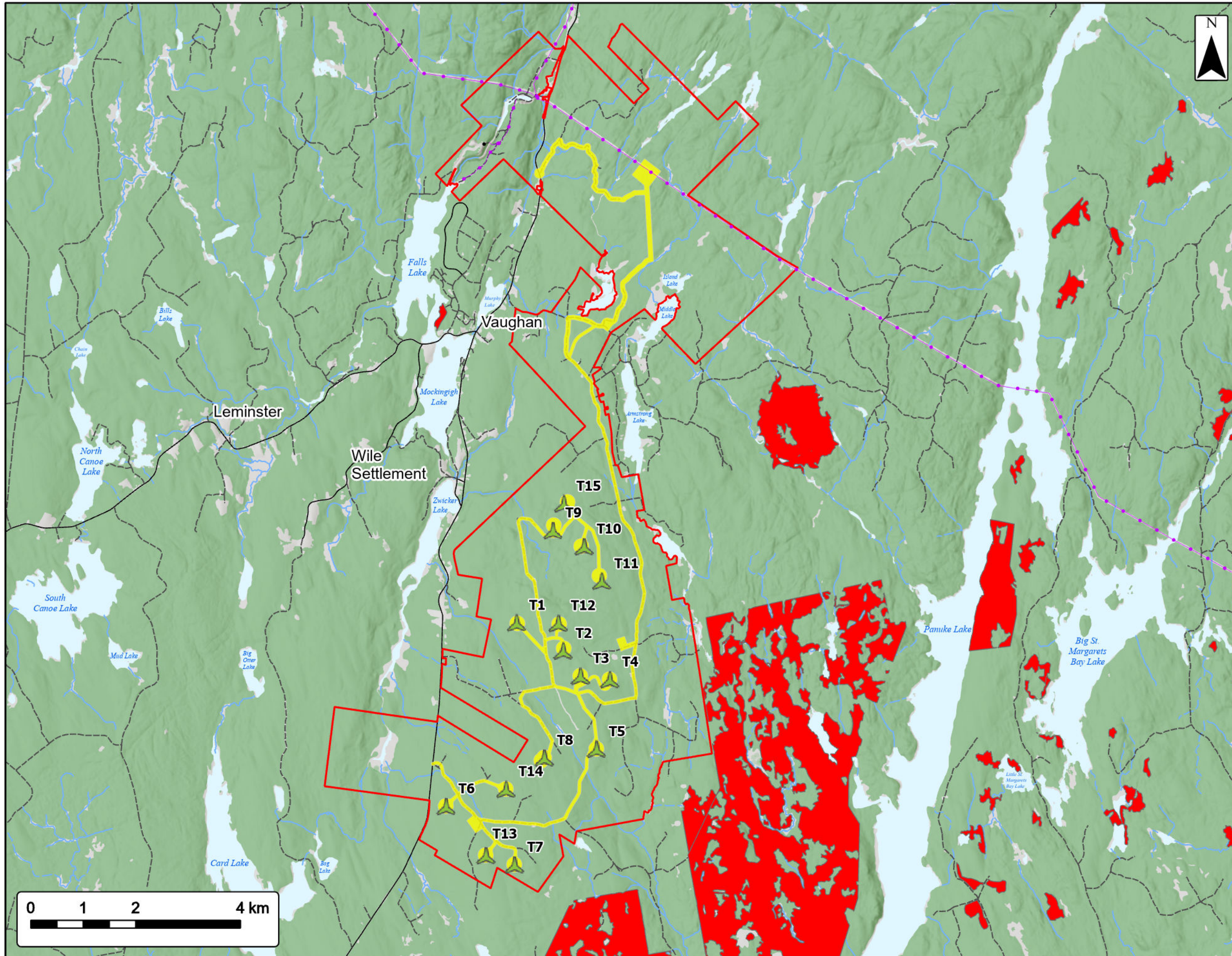


Coordinate System: NAD83 UTM Zone 20N  
 Sources: ESRI Basemaps, GeoNOVA, SNSIS, NRCan, NSNRR, ACCDC, IBA Canada

Date:	Oct 2023	Project #:	23-9128
Scale:	1:10,000	Drawing #:	<b>7.18B</b>
Drawn By:	K. Wallace		
Checked By:	M. Savelle		







# Bear Lake Wind Power Project

Old Growth



Study Area	
Assessment Area	
Proposed Turbine Location	
Old Growth Policy	
<b>Utilities (line)</b>	
Existing Pipeline	
Existing Transmission Lines	
<b>Transportation</b>	
Road	
Unpaved Road	
<b>Water Features</b>	
Mapped Stream	
Mapped Indefinite Stream	
Mapped Lakes and Rivers	



Coordinate System: NAD83 UTM Zone 20N  
 Sources: ESRI Basemaps, GeoNOVA, SNSIS, NRCan, NSNRR, ACCDC, IBA Canada

Date: Oct 2023

Project #: 23-9128

Scale: 1:70,000

Drawing #:

Drawn By: K. Wallace

**7.18C**

Checked By: M. Savelle

