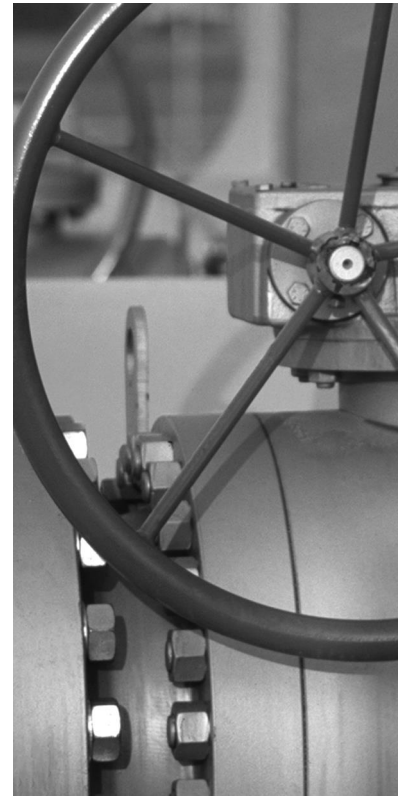


# F : ARCHAEOLOGICAL MAPS AND : IMAGES



SNC • LAVALIN



 **Bear Head**  
**LNG**  
A subsidiary company of Liquefied Natural Gas Limited

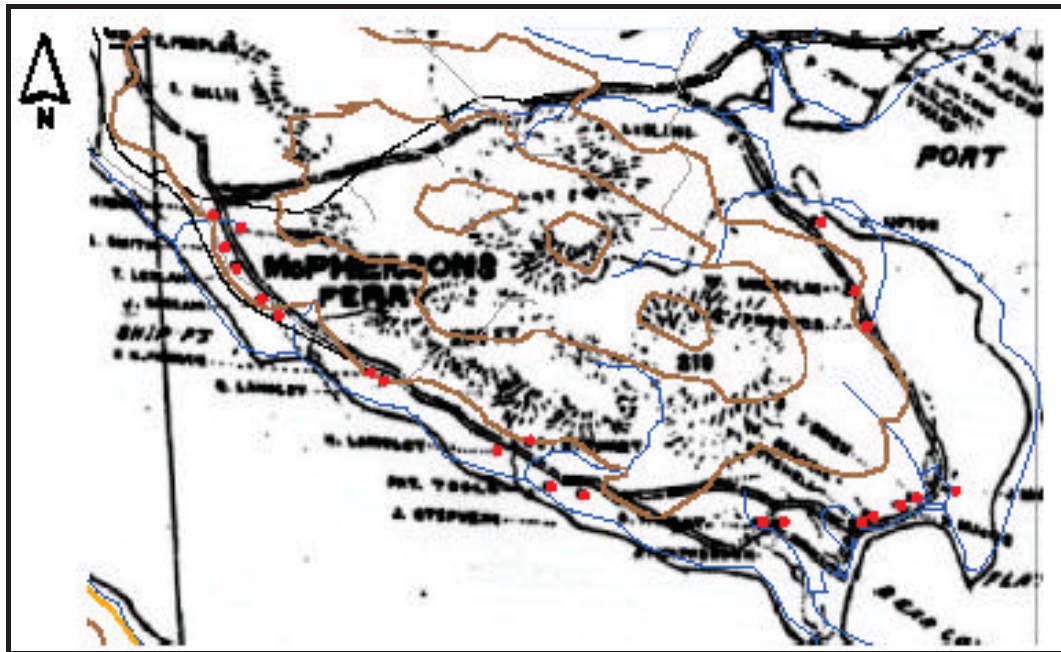


Figure 1 Corrected Church Map on Digital Basemap

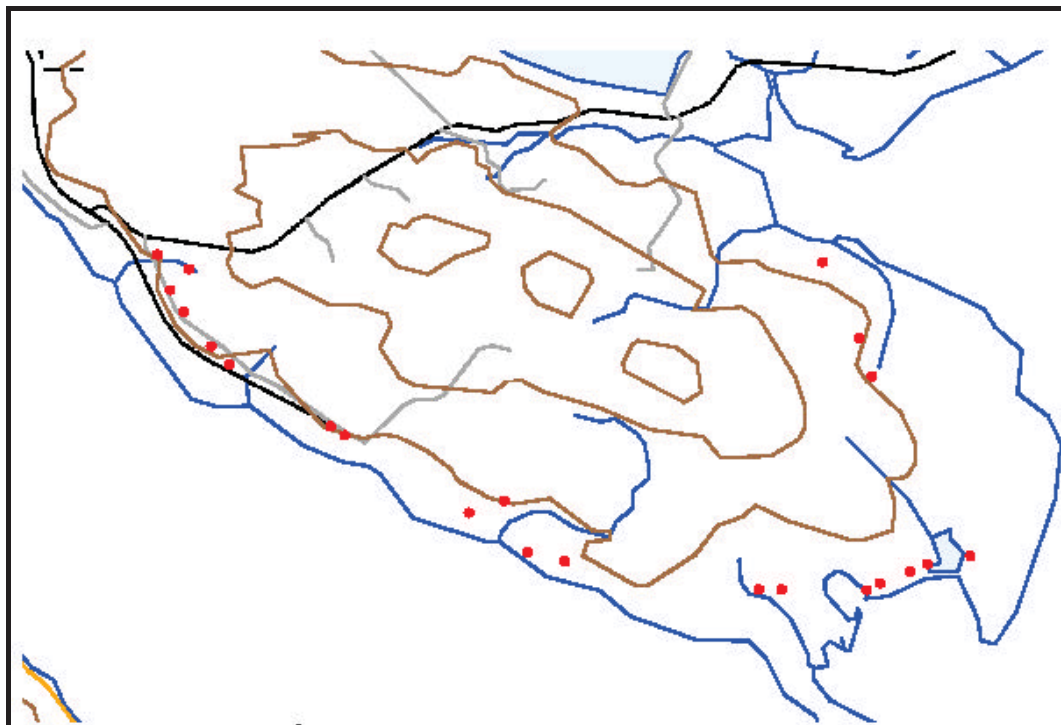


Figure 2 Digitized Church Map features on Digital Basemap



Figure 3 Aerial Photo with Digital Basemap Overlay

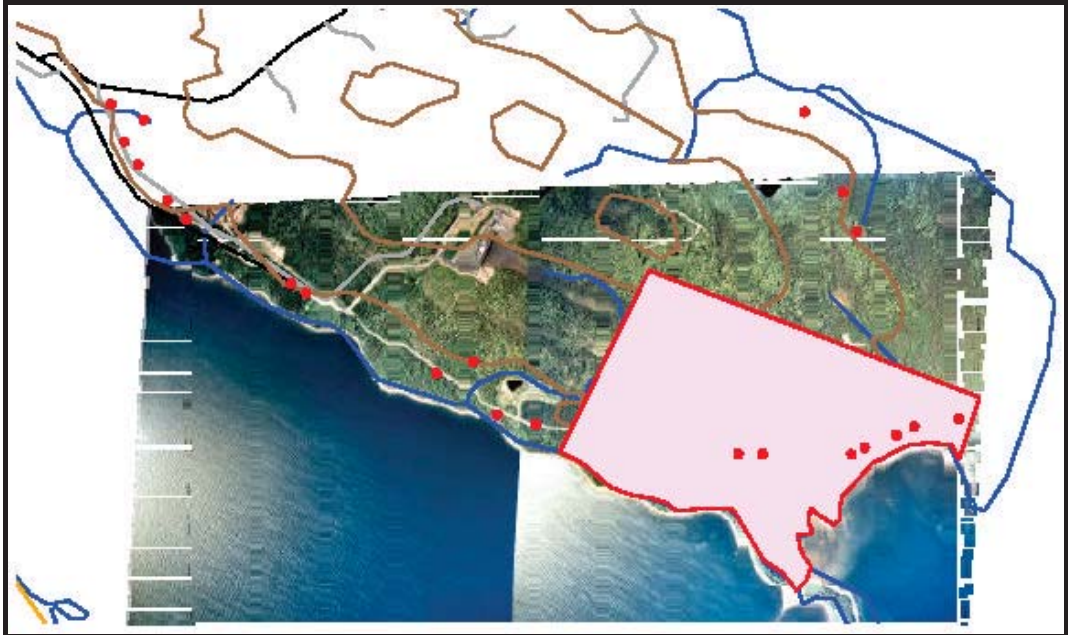


Figure 4 Geocorrected Orthophoto with Sites and Study Area





Figure 5 Historic Sites Located During the Survey

1:3244

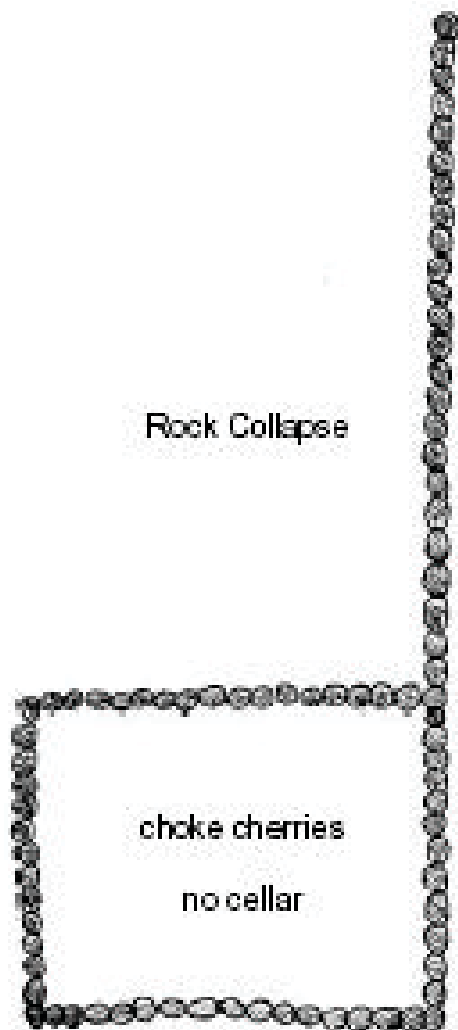
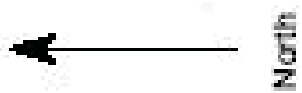


Figure 6 O'Brien Cellar Plan View

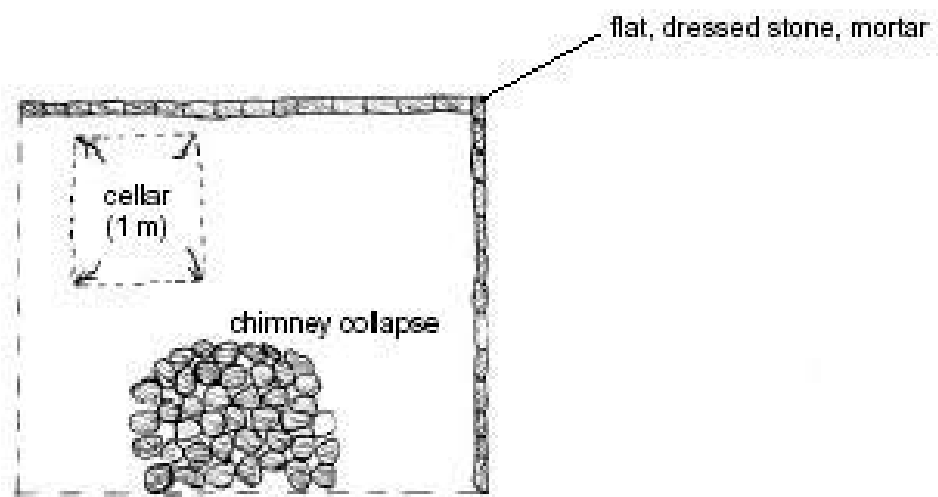
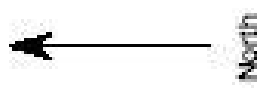


Figure 7 J. Mackie Cellar, Plan View

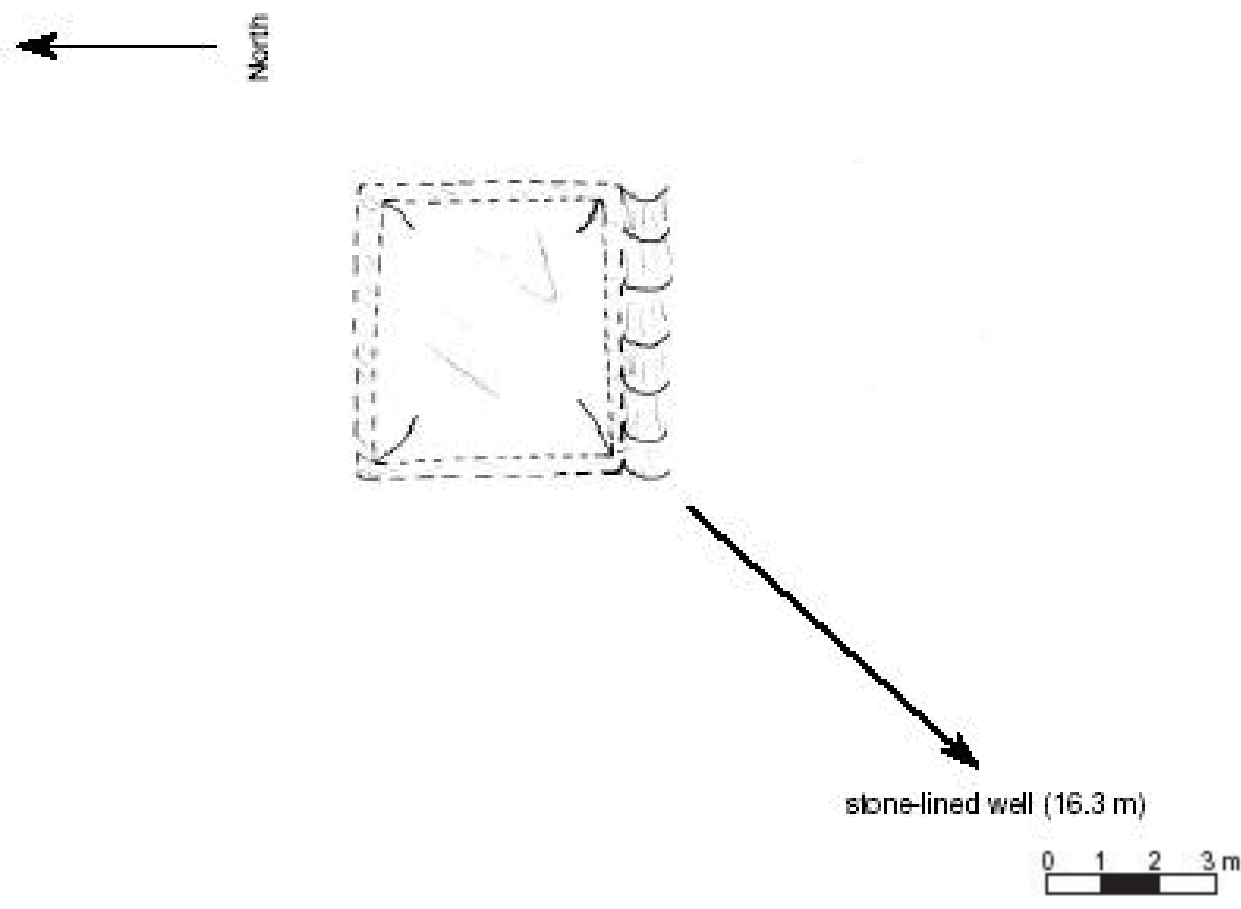


Figure 8 R. Mackie Cellar Plan View

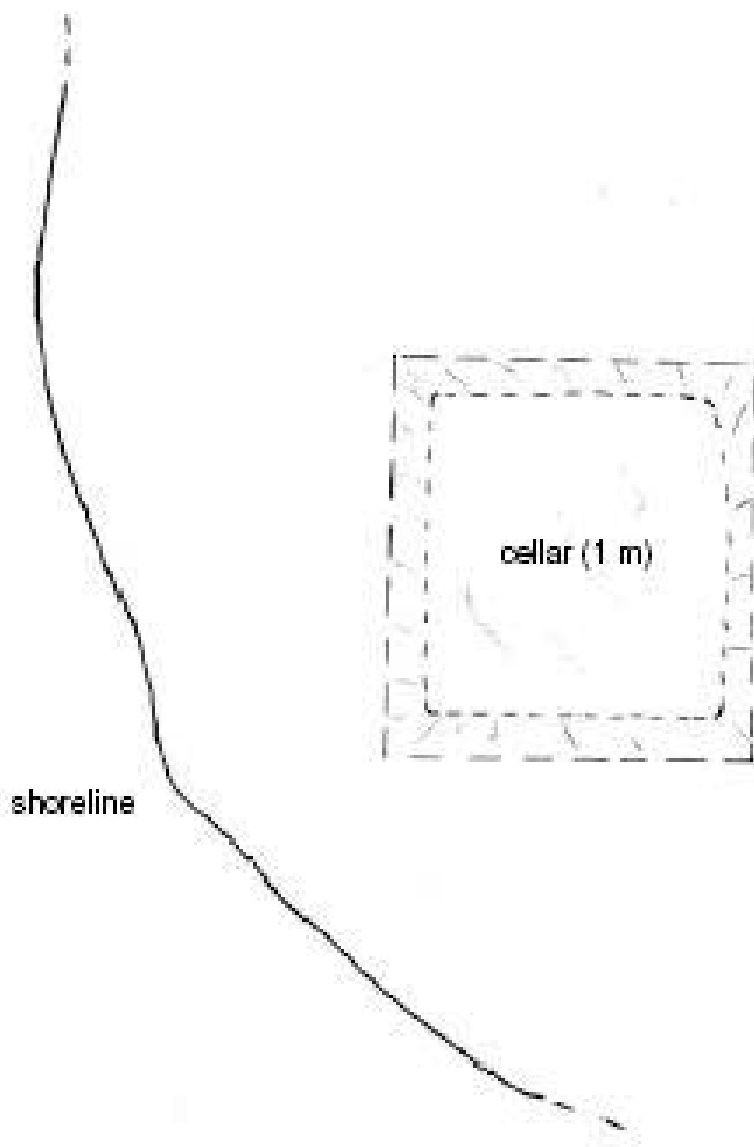


Figure 9 T. Mitchell Cellar Plan View





**Photo 1** Chedabucto Bay Shore, Looking Northwest



**Photo 2** Chedabucto Bay Shore, Looking Southeast





**Photo 3 Bear Cove and Beach, Looking West**



**Photo 4 Bear Cove Beach Looking Southwest**





**Photo 5** Rock Spoil Heap



**Photo 6** Bear Cove





**Photo 7 The Pond North of Bear Cove Beach**



**Photo 8 The Marsh West of Bear Cove Beach, Taken from the Road, Looking West**



**Photo 9 East End of Bear Cove Beach, Looking East**



**Photo 10 East End of Bear Cove Beach, Looking Northeast**





**Photo 11 Level Area Above Bear Cove Beach, Looking East**



**Photo 12 O'Brien Cellar Covered in Vegetation, Looking Northwest**





**Photo 13 J. Mackie Cellar, Looking Northwest**



**Photo 14 R. Mackie Cellar, Looking North**





**Photo 15** Trees Covering the T. Mitchell Cellar, Looking Southwest



**Photo 16** T. Mitchell Cellar, Looking Southwest