

APPENDIX L
ATLANTIC CANADIAN CONSERVATION DATA CENTRE
REPORT

DATA REPORT 6930: Westchester Mountain, NS

Prepared 7 May 2021
by C. Robicheau, Data Manager

CONTENTS OF REPORT

1.0 Preface

- 1.1 Data List
- 1.2 Restrictions
- 1.3 Additional Information
- Map 1: Buffered Study Area

2.0 Rare and Endangered Species

- 2.1 Flora
- 2.2 Fauna
- Map 2: Flora and Fauna

3.0 Special Areas

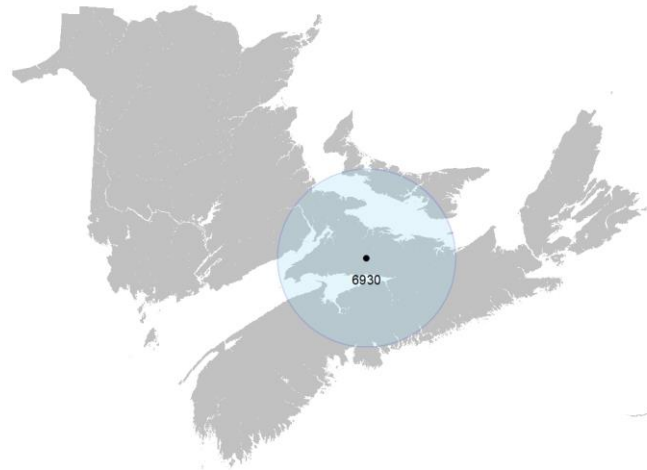
- 3.1 Managed Areas
- 3.2 Significant Areas
- Map 3: Special Areas

4.0 Rare Species Lists

- 4.1 Fauna
- 4.2 Flora
- 4.3 Location Sensitive Species
- 4.4 Source Bibliography

5.0 Rare Species within 100 km

- 5.1 Source Bibliography



Map 1. A 100 km buffer around the study area

1.0 PREFACE

The Atlantic Canada Conservation Data Centre (AC CDC; www.accdc.com) is part of a network of NatureServe data centres and heritage programs serving 50 states in the U.S.A, 10 provinces and 1 territory in Canada, plus several Central and South American countries. The NatureServe network is more than 30 years old and shares a common conservation data methodology. The AC CDC was founded in 1997, and maintains data for the jurisdictions of New Brunswick, Nova Scotia, Prince Edward Island, and Newfoundland and Labrador. Although a non-governmental agency, the AC CDC is supported by 6 federal agencies and 4 provincial governments, as well as through outside grants and data processing fees.

Upon request and for a fee, the AC CDC queries its database and produces customized reports of the rare and endangered flora and fauna known to occur in or near a specified study area. As a supplement to that data, the AC CDC includes locations of managed areas with some level of protection, and known sites of ecological interest or sensitivity.

1.1 DATA LIST

Included datasets:

<u>Filename</u>	<u>Contents</u>
x	x

1.2 RESTRICTIONS

The AC CDC makes a strong effort to verify the accuracy of all the data that it manages, but it shall not be held responsible for any inaccuracies in data that it provides. By accepting AC CDC data, recipients assent to the following limits of use:

- a) Data is restricted to use by trained personnel who are sensitive to landowner interests and to potential threats to rare and/or endangered flora and fauna posed by the information provided.
- b) Data is restricted to use by the specified Data User; any third party requiring data must make its own data request.
- c) The AC CDC requires Data Users to cease using and delete data 12 months after receipt, and to make a new request for updated data if necessary at that time.
- d) AC CDC data responses are restricted to the data in our Data System at the time of the data request.
- e) Each record has an estimate of locational uncertainty, which must be referenced in order to understand the record's relevance to a particular location. Please see attached Data Dictionary for details.
- f) AC CDC data responses are not to be construed as exhaustive inventories of taxa in an area.
- g) The absence of a taxon cannot be inferred by its absence in an AC CDC data response.

1.3 ADDITIONAL INFORMATION

The accompanying Data Dictionary provides metadata for the data provided.

Please direct any additional questions about AC CDC data to the following individuals:

Plants, Lichens, Ranking Methods, All other Inquiries

Sean Blaney, Senior Scientist, Executive Director

Tel: (506) 364-2658

sean.blaney@accdc.ca

Animals (Fauna)

John Klymko, Zoologist

Tel: (506) 364-2660

john.klymko@accdc.ca

Plant Communities

Sarah Robinson, Community Ecologist

Tel: (506) 364-2664

sarah.robinson@accdc.ca

Data Management, GIS

James Churchill, Data Manager

Tel: (902) 679-6146

james.churchill@accdc.ca

Billing

Jean Breau

Tel: (506) 364-2657

jean.breau@accdc.ca

Questions on the biology of Federal Species at Risk can be directed to AC CDC: (506) 364-2658, with questions on Species at Risk regulations to: Samara Eaton, Canadian Wildlife Service (NB and PE): (506) 364-5060 or Julie McKnight, Canadian Wildlife Service (NS): (902) 426-4196.

For provincial information about rare taxa and protected areas, or information about game animals, deer yards, old growth forests, archeological sites, fish habitat etc., in New Brunswick, please contact Hubert Askanas, Energy and Resource Development: (506) 453-5873.

For provincial information about rare taxa and protected areas, or information about game animals, deer yards, old growth forests, archeological sites, fish habitat etc., in Nova Scotia, please contact Donna Hurlburt, NS DLF: (902) 679-6886. To determine if location-sensitive species (section 4.3) occur near your study site please contact a NS DLF Regional Biologist:

Western: Emma Vost

(902) 670-8187

Emma.Vost@novascotia.ca

Western: Sarah Spencer

(902) 541-0081

Sarah.Spencer@novascotia.ca

Central: Shavonne Meyer

(902) 893-0816

Shavonne.Meyer@novascotia.ca

Central: Kimberly George

(902) 890-1046

Kimberly.George@novascotia.ca

Eastern: Harrison Moore

(902) 497-4119

Harrison.Moore@novascotia.ca

Eastern: Maureen Cameron-MacMillan

(902) 295-2554

Maureen.Cameron-MacMillan@novascotia.ca

Eastern: Elizabeth Walsh

(902) 563-3370

Elizabeth.Walsh@novascotia.ca

For provincial information about rare taxa and protected areas, or information about game animals, fish habitat etc., in Prince Edward Island, please contact Garry Gregory, PEI Dept. of Communities, Land and Environment: (902) 569-7595.

2.0 RARE AND ENDANGERED SPECIES

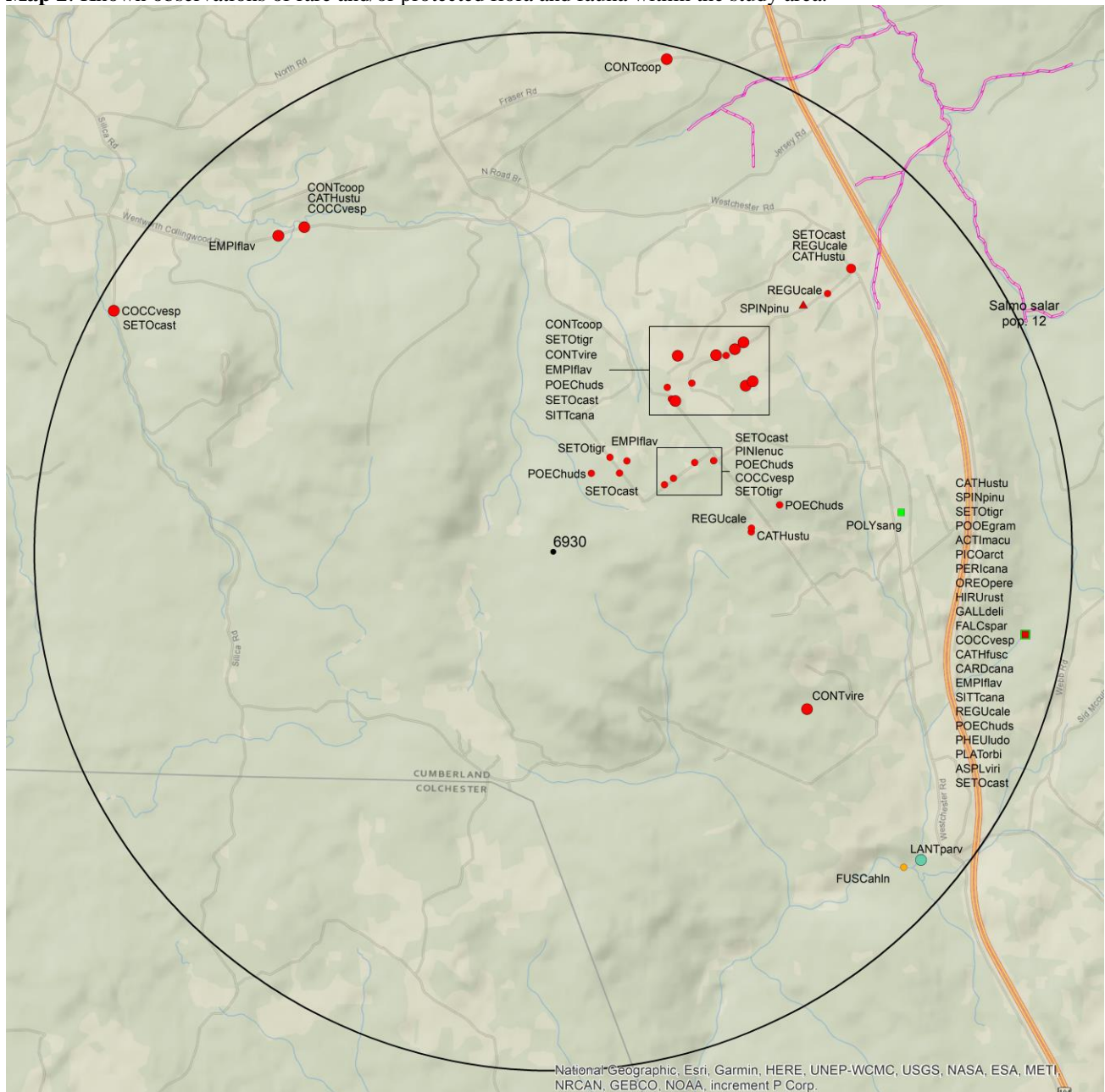
2.1 FLORA

The study area contains 3 records of 3 vascular and 1 record of 1 nonvascular flora (Map 2 and attached: *ob.xls).

2.2 FAUNA

The study area contains 70 records of 23 vertebrate and 1 record of 1 invertebrate fauna (Map 2 and attached data files - see 1.1 Data List). Please see section 4.3 to determine if 'location-sensitive' species occur near your study site.

Map 2: Known observations of rare and/or protected flora and fauna within the study area.



- RESOLUTION**
- 4.7 within 50s of kilometers
 - 4.0 within 10s of kilometers
 - 3.7 within 5s of kilometers
 - △ 3.0 within kilometers
 - △ 2.7 within 500s of meters
 - ◇ 2.0 within 100s of meters
 - ◇ 1.7 within 10s of meters

- HIGHER TAXON**
- vertebrate fauna
 - invertebrate fauna
 - vascular flora
 - nonvascular flora

3.0 SPECIAL AREAS

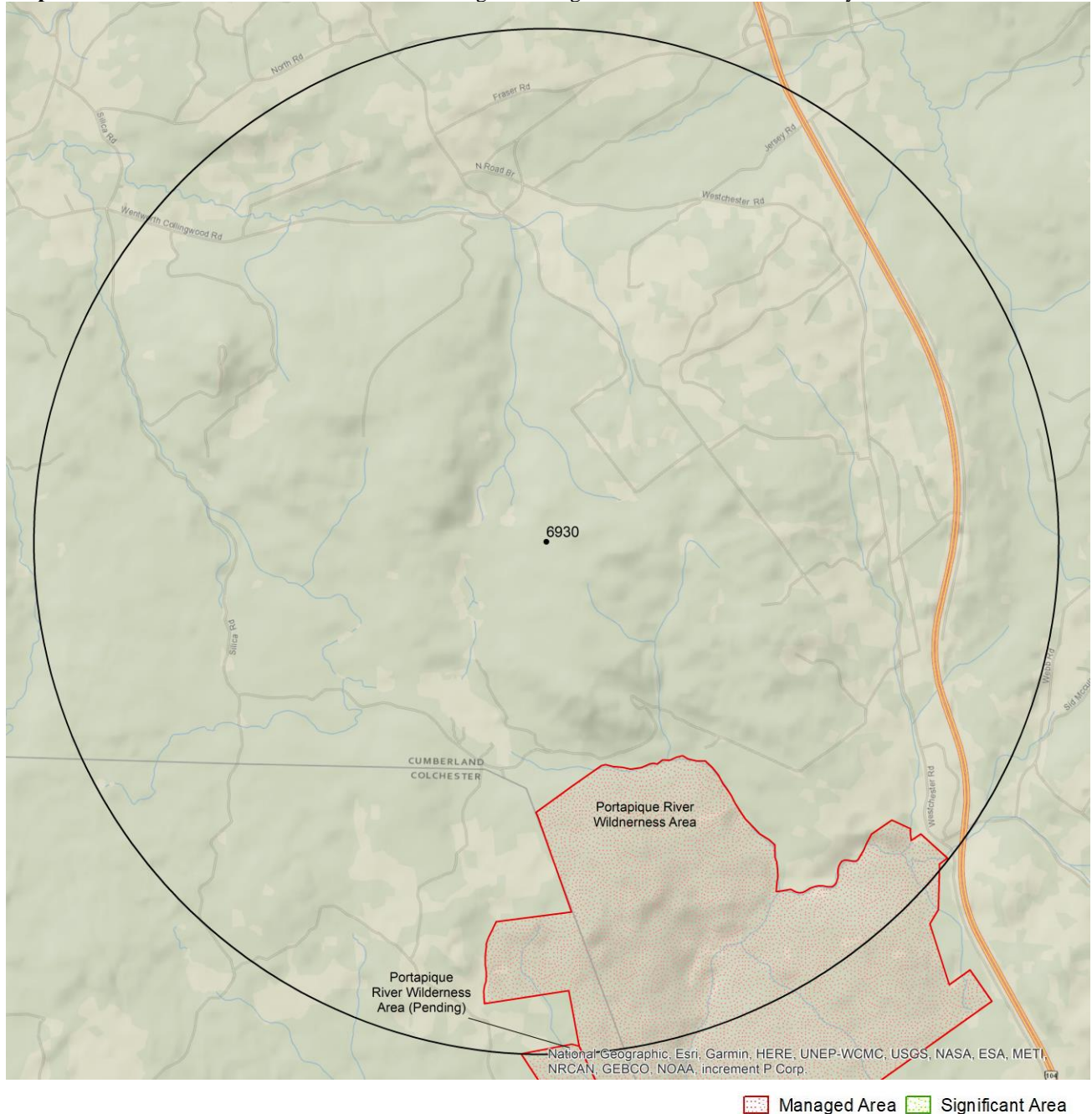
3.1 MANAGED AREAS

The GIS scan identified 2 managed areas in the vicinity of the study area (Map 3 and attached file: *msa.xls).

3.2 SIGNIFICANT AREAS

The GIS scan identified no biologically significant sites in the vicinity of the study area (Map 3 and attached file: *msa.xls).

Map 3: Boundaries and/or locations of known Managed and Significant Areas within the study area.



4.0 RARE SPECIES LISTS

Rare and/or endangered taxa (excluding “location-sensitive” species, section 4.3) within the study area listed in order of concern, beginning with legally listed taxa, with the number of observations per taxon and the distance in kilometers from study area centroid to the closest observation (\pm the precision, in km, of the record). [P] = vascular plant, [N] = nonvascular plant, [A] = vertebrate animal, [I] = invertebrate animal, [C] = community. Note: records are from attached files *ob.xls/*ob.shp only.

4.1 FLORA

	Scientific Name	Common Name	COSEWIC	SARA	Prov Legal Prot	Prov Rarity Rank	# recs	Distance (km)
N	<i>Fuscopannaria ahlneri</i>	Corrugated Shingles Lichen				S3	1	4.6 \pm 0.0
P	<i>Polygala sanguinea</i>	Blood Milkwort				S3	1	3.4 \pm 5.0
P	<i>Platanthera orbiculata</i>	Small Round-leaved Orchid				S3	1	4.6 \pm 7.0
P	<i>Asplenium viride</i>	Green Spleenwort				S3	1	4.6 \pm 7.0

4.2 FAUNA

	Scientific Name	Common Name	COSEWIC	SARA	Prov Legal Prot	Prov Rarity Rank	# recs	Distance (km)
A	<i>Hirundo rustica</i>	Barn Swallow	Threatened	Threatened	Endangered	S2S3B	1	4.6 \pm 7.0
A	<i>Cardellina canadensis</i>	Canada Warbler	Threatened	Threatened	Endangered	S3B	1	4.6 \pm 7.0
A	<i>Contopus cooperi</i>	Olive-sided Flycatcher	Special Concern	Threatened	Threatened	S2B	5	2.5 \pm 0.0
A	<i>Contopus virens</i>	Eastern Wood-Pewee	Special Concern	Special Concern	Vulnerable	S3S4B	3	2.2 \pm 0.0
A	<i>Coccothraustes vespertinus</i>	Evening Grosbeak	Special Concern	Special Concern	Vulnerable	S3S4B,S3N	4	1.6 \pm 0.0
A	<i>Setophaga tigrina</i>	Cape May Warbler				S2B	4	1.1 \pm 0.0
A	<i>Pooecetes gramineus</i>	Vesper Sparrow				S2B	1	4.6 \pm 7.0
A	<i>Spinus pinus</i>	Pine Siskin				S2S3	2	3.4 \pm 0.0
A	<i>Pheucticus ludovicianus</i>	Rose-breasted Grosbeak				S2S3B	2	4.6 \pm 7.0
A	<i>Pinicola enucleator</i>	Pine Grosbeak				S2S3B,S5N	1	1.8 \pm 0.0
A	<i>Perisoreus canadensis</i>	Canada Jay				S3	1	4.6 \pm 7.0
A	<i>Poecile hudsonicus</i>	Boreal Chickadee				S3	7	0.8 \pm 0.0
A	<i>Sitta canadensis</i>	Red-breasted Nuthatch				S3	4	1.9 \pm 0.0
A	<i>Falco sparverius</i>	American Kestrel				S3B	1	4.6 \pm 7.0
A	<i>Gallinago delicata</i>	Wilson's Snipe				S3B	2	4.6 \pm 7.0
A	<i>Picoides arcticus</i>	Black-backed Woodpecker				S3S4	1	4.6 \pm 7.0
A	<i>Actitis macularius</i>	Spotted Sandpiper				S3S4B	1	4.6 \pm 7.0
A	<i>Empidonax flaviventris</i>	Yellow-bellied Flycatcher				S3S4B	7	1.1 \pm 0.0
A	<i>Regulus calendula</i>	Ruby-crowned Kinglet				S3S4B	5	1.9 \pm 0.0
A	<i>Catharus fuscescens</i>	Veery				S3S4B	1	4.6 \pm 7.0
A	<i>Catharus ustulatus</i>	Swainson's Thrush				S3S4B	7	1.9 \pm 0.0
A	<i>Oreothlypis peregrina</i>	Tennessee Warbler				S3S4B	1	4.6 \pm 7.0
A	<i>Setophaga castanea</i>	Bay-breasted Warbler				S3S4B	8	1.0 \pm 0.0
I	<i>Lanthus parvulus</i>	Northern Pygmy Clubtail				S3S4	1	4.5 \pm 0.0

4.3 LOCATION SENSITIVE SPECIES

The Department of Natural Resources in each Maritimes province considers a number of species “location sensitive”. Concern about exploitation of location-sensitive species precludes inclusion of precise coordinates in this report. Those intersecting your study area are indicated below with “YES”.

Nova Scotia

Scientific Name	Common Name	SARA	Prov Legal Prot	Known within the Study Site?
<i>Fraxinus nigra</i>	Black Ash		Threatened	No
<i>Emydoidea blandingii</i>	Blanding's Turtle - Nova Scotia pop.	Endangered	Vulnerable	No
<i>Glyptemys insculpta</i>	Wood Turtle	Threatened	Threatened	No
<i>Falco peregrinus pop. 1</i>	Peregrine Falcon - anatum/tundrius pop.	Special Concern	Vulnerable	No

Scientific Name	Common Name	SARA	Prov Legal Prot	Known within the Study Site?
<i>Bat hibernaculum</i> or bat species occurrence		[Endangered] ¹	[Endangered] ¹	No

1 *Myotis lucifugus* (Little Brown Myotis), *Myotis septentrionalis* (Long-eared Myotis), and *Perimyotis subflavus* (Tri-colored Bat or Eastern Pipistrelle) are all Endangered under the Federal Species at Risk Act and the NS Endangered Species Act.

4.4 SOURCE BIBLIOGRAPHY

The recipient of these data shall acknowledge the AC CDC and the data sources listed below in any documents, reports, publications or presentations, in which this dataset makes a significant contribution.

# recs	CITATION
23	Blaney, C.S.; Mazerolle, D.M. 2012. Fieldwork 2012. Atlantic Canada Conservation Data Centre, 13,278 recs.
22	Lepage, D. 2014. Maritime Breeding Bird Atlas Database. Bird Studies Canada, Sackville NB, 407,838 recs.
18	Erskine, A.J. 1992. Maritime Breeding Bird Atlas Database. NS Museum & Nimbus Publ., Halifax, 82,125 recs.
7	Blaney, C.S.; Mazerolle, D.M. 2011. Fieldwork 2011. Atlantic Canada Conservation Data Centre. Sackville NB.
1	Benjamin, L.K. (compiler). 2007. Significant Habitat & Species Database. Nova Scotia Dept Natural Resources, 8439 recs.
1	Blaney, C.S.; Mazerolle, D.M.; Oberndorfer, E. 2007. Fieldwork 2007. Atlantic Canada Conservation Data Centre. Sackville NB, 13770 recs.
1	Cameron, R.P. 2009. Cyanolichen database. Nova Scotia Environment & Labour, 1724 recs.
1	Canadian Wildlife Service. 2019. Canadian Protected and Conserved Areas Database (CPCAD). December 2019. ECCC. https://www.canada.ca/en/environment-climate-change/services/national-wildlife-areas/protected-conserved-areas-database.html .
1	Newell, R.E. 2005. E.C. Smith Digital Herbarium. E.C. Smith Herbarium, Irving Biodiversity Collection, Acadia University, Web site: http://luxor.acadiau.ca/library/Herbarium/project/ . 582 recs.
1	Nova Scotia Department of Lands and Forestry. 2020. NS Lands Proposed or Pending Protection. NSDLF, 231 features. Received via email.
1	Prorych, G. & Wilson, A. 1993. Atlas of Rare Vascular Plants in Nova Scotia. Nova Scotia Museum, Halifax NS, I:1-168, II:169-331. 1446 recs.
1	Zinck, M. & Roland, A.E. 1998. Roland's Flora of Nova Scotia. Nova Scotia Museum, 3rd ed., rev. M. Zinck; 2 Vol., 1297 pp.

5.0 RARE SPECIES WITHIN 100 KM

A 100 km buffer around the study area contains 54066 records of 156 vertebrate and 1993 records of 76 invertebrate fauna; 9473 records of 305 vascular and 1654 records of 185 nonvascular flora (attached: *ob100km.xls).

Taxa within 100 km of the study site that are rare and/or endangered in the province in which the study site occurs (including “location-sensitive” species). All ranks correspond to the province in which the study site falls, even for out-of-province records. Taxa are listed in order of concern, beginning with legally listed taxa, with the number of observations per taxon and the distance in kilometers from study area centroid to the closest observation (\pm the precision, in km, of the record).

Taxonomic Group	Scientific Name	Common Name	COSEWIC	SARA	Prov Legal Prot	Prov Rarity Rank	# recs	Distance (km)	Prov
A	<i>Coregonus huntsmani</i>	Atlantic Whitefish	Endangered	Endangered	Endangered	S1	1	69.4 \pm 1.0	NS
A	<i>Myotis lucifugus</i>	Little Brown Myotis	Endangered	Endangered	Endangered	S1	174	12.4 \pm 0.0	NS
A	<i>Myotis septentrionalis</i>	Northern Long-eared Myotis	Endangered	Endangered	Endangered	S1	60	12.4 \pm 0.0	NS
A	<i>Perimyotis subflavus</i>	Eastern Pipistrelle	Endangered	Endangered	Endangered	S1	22	33.3 \pm 0.0	NS
A	<i>Salmo salar</i> pop. 1	Atlantic Salmon - Inner Bay of Fundy pop.	Endangered	Endangered		S1	63	13.6 \pm 1.0	NS
A	<i>Salmo salar</i> pop. 6	Atlantic Salmon - Nova Scotia Southern Upland pop.	Endangered			S1	11	83.6 \pm 0.0	NS
A	<i>Charadrius melodus melodus</i>	Piping Plover melodus ssp	Endangered	Endangered	Endangered	S1B	467	23.3 \pm 0.0	NS
A	<i>Sterna dougallii</i>	Roseate Tern	Endangered	Endangered	Endangered	S1B	1	87.7 \pm 0.0	NS
A	<i>Morone saxatilis</i> pop. 2	Striped Bass - Bay of Fundy pop.	Endangered			S1B	4	67.6 \pm 0.0	NS
A	<i>Dermochelys coriacea</i> (Atlantic pop.)	Leatherback Sea Turtle - Atlantic pop.	Endangered	Endangered		S1S2N	2	56.8 \pm 1.0	NB
A	<i>Calidris canutus rufa</i>	Red Knot rufa ssp	Endangered	Endangered	Endangered	S2M	561	23.3 \pm 0.0	NS
A	<i>Antrostomus vociferus</i>	Eastern Whip-Poor-Will	Threatened	Threatened	Threatened	S1?B	14	20.0 \pm 7.0	NS
A	<i>Catharus bicknelli</i>	Bicknell's Thrush	Threatened	Threatened	Endangered	S1S2B	5	39.6 \pm 7.0	NS
A	<i>Limosa haemastica</i>	Hudsonian Godwit	Threatened			S1S2M	282	18.4 \pm 0.0	NS

Taxonomic Group	Scientific Name	Common Name	COSEWIC	SARA	Prov Legal Prot	Prov Rarity Rank	# recs	Distance (km)	Prov
A	<i>Glyptemys insculpta</i>	Wood Turtle	Threatened	Threatened	Threatened	S2	945	10.4 ± 0.0	NS
A	<i>Acipenser oxyrinchus</i>	Atlantic Sturgeon	Threatened			S2	7	53.5 ± 0.0	NS
A	<i>Anguilla rostrata</i>	American Eel	Threatened			S2	72	12.9 ± 1.0	NS
A	<i>Chaetura pelagica</i>	Chimney Swift	Threatened	Threatened	Endangered	S2B,S1M	355	5.3 ± 0.0	NS
A	<i>Riparia riparia</i>	Bank Swallow	Threatened	Threatened	Endangered	S2S3B	2425	5.5 ± 7.0	NS
A	<i>Hirundo rustica</i>	Barn Swallow	Threatened	Threatened	Endangered	S2S3B	1464	4.6 ± 7.0	NS
A	<i>Cardellina canadensis</i>	Canada Warbler	Threatened	Threatened	Endangered	S3B	984	4.6 ± 7.0	NS
A	<i>Dolichonyx oryzivorus</i>	Bobolink	Threatened	Threatened	Vulnerable	S3S4B	1553	5.5 ± 7.0	NS
A	<i>Sturnella magna</i>	Eastern Meadowlark	Threatened	Threatened		SHB	6	59.5 ± 1.0	NB
A	<i>Ixobrychus exilis</i>	Least Bittern	Threatened	Threatened		SUB	15	45.1 ± 0.0	NS
A	<i>Hylocichla mustelina</i>	Wood Thrush	Threatened	Threatened		SUB	52	12.1 ± 7.0	NS
A	<i>Salmo salar pop. 12</i>	Atlantic Salmon - Gaspé - Southern Gulf of St Lawrence pop.	Special Concern			S1	29	16.0 ± 50.0	NS
A	<i>Bucephala islandica (Eastern pop.)</i>	Barrow's Goldeneye - Eastern pop.	Special Concern	Special Concern		S1N	72	34.5 ± 1.0	NS
A	<i>Asio flammeus</i>	Short-eared Owl	Special Concern	Special Concern		S1S2B	48	38.2 ± 7.0	NS
A	<i>Euphagus carolinus</i>	Rusty Blackbird	Special Concern	Special Concern	Endangered	S2B	205	15.5 ± 7.0	NS
A	<i>Chordeiles minor</i>	Common Nighthawk	Special Concern	Threatened	Threatened	S2B	393	11.7 ± 7.0	NS
A	<i>Contopus cooperi</i>	Olive-sided Flycatcher	Special Concern	Threatened	Threatened	S2B	863	2.5 ± 0.0	NS
A	<i>Histrionicus histrionicus pop. 1</i>	Harlequin Duck - Eastern pop.	Special Concern	Special Concern	Endangered	S2N	5	62.7 ± 0.0	NS
A	<i>Balaenoptera physalus</i>	Fin Whale	Special Concern	Special Concern		S2S3	1	81.1 ± 1.0	NB
A	<i>Phalaropus lobatus</i>	Red-necked Phalarope	Special Concern	Special Concern		S2S3M	20	27.1 ± 0.0	NS
A	<i>Chelydra serpentina</i>	Snapping Turtle	Special Concern	Special Concern	Vulnerable	S3	121	16.5 ± 0.0	NS
A	<i>Contopus virens</i>	Eastern Wood-Pewee	Special Concern	Special Concern	Vulnerable	S3S4B	911	2.2 ± 0.0	NS
A	<i>Coccothraustes vespertinus</i>	Evening Grosbeak	Special Concern	Special Concern	Vulnerable	S3S4B,S3N	452	1.6 ± 0.0	NS
A	<i>Phocoena phocoena pop. 1</i>	Harbour Porpoise - Northwest Atlantic pop.	Special Concern			S4	3	69.3 ± 0.0	NB
A	<i>Podiceps auritus</i>	Horned Grebe	Special Concern	Special Concern		S4N	51	63.0 ± 0.0	NB
A	<i>Chrysemys picta picta</i>	Eastern Painted Turtle	Special Concern			S4S5	198	5.5 ± 10.0	NS
A	<i>Lynx canadensis</i>	Canadian Lynx	Not At Risk		Endangered	S1	7	71.1 ± 1.0	NB
A	<i>Accipiter cooperii</i>	Cooper's Hawk	Not At Risk			S1?B	7	50.0 ± 0.0	NS
A	<i>Fulica americana</i>	American Coot	Not At Risk			S1B	54	39.6 ± 0.0	NS
A	<i>Chlidonias niger</i>	Black Tern	Not At Risk			S1B	180	45.5 ± 0.0	NS
A	<i>Falco peregrinus pop. 1</i>	Peregrine Falcon - anatum/tundrius	Not At Risk	Special Concern	Vulnerable	S1B,SNAM	318	32.2 ± 0.0	NS
A	<i>Sorex dispar</i>	Long-tailed Shrew	Not At Risk			S2	6	9.9 ± 5.0	NS
A	<i>Aegolius funereus</i>	Boreal Owl	Not At Risk			S2?B	10	26.8 ± 7.0	NS
A	<i>Glaucomys volans</i>	Southern Flying Squirrel	Not At Risk			S2S3	6	68.0 ± 10.0	NS
A	<i>Globicephala melas</i>	Long-finned Pilot Whale	Not At Risk			S2S3	1	86.6 ± 100.0	NS
A	<i>Hemidactylium scutatum</i>	Four-toed Salamander	Not At Risk			S3	25	16.2 ± 0.0	NS
A	<i>Megaptera novaeangliae</i>	Humpback Whale (NW Atlantic pop.)	Not At Risk			S3	3	56.3 ± 0.0	NS
A	<i>Sterna hirundo</i>	Common Tern	Not At Risk			S3B	379	29.6 ± 7.0	NS
A	<i>Sialia sialis</i>	Eastern Bluebird	Not At Risk			S3B	211	17.8 ± 0.0	NS
A	<i>Buteo lagopus</i>	Rough-legged Hawk	Not At Risk			S3N	17	49.9 ± 0.0	NS
A	<i>Accipiter gentilis</i>	Northern Goshawk	Not At Risk			S3S4	156	10.3 ± 7.0	NS
A	<i>Lagenorhynchus acutus</i>	Atlantic White-sided Dolphin	Not At Risk			S3S4	3	32.6 ± 0.0	NS
A	<i>Circus hudsonius</i>	Northern Harrier	Not At Risk			S3S4B	558	15.5 ± 7.0	NS
A	<i>Ammodramus nelsoni</i>	Nelson's Sparrow	Not At Risk			S3S4B	1007	12.1 ± 7.0	NS
A	<i>Morone saxatilis</i>	Striped Bass	E,SC			S2S3	7	29.0 ± 0.0	NS
A	<i>Martes americana</i>	American Marten			Endangered	S1	6	93.2 ± 0.0	NB
A	<i>Alces americanus</i>	Moose			Endangered	S1	145	7.3 ± 0.0	NS
A	<i>Picoides dorsalis</i>	American Three-toed Woodpecker				S1?	6	34.8 ± 0.0	NS
A	<i>Passerina cyanea</i>	Indigo Bunting				S1?B	41	24.8 ± 0.0	NS
A	<i>Nycticorax nycticorax</i>	Black-crowned Night-heron				S1B	3	59.5 ± 1.0	NB

Taxonomic Group	Scientific Name	Common Name	COSEWIC	SARA	Prov Legal Prot	Prov Rarity Rank	# recs	Distance (km)	Prov
A	<i>Anas acuta</i>	Northern Pintail				S1B	146	15.2 ± 0.0	NS
A	<i>Oxyura jamaicensis</i>	Ruddy Duck				S1B	92	45.9 ± 7.0	NS
A	<i>Gallinula galeata</i>	Common Gallinule				S1B	52	39.5 ± 7.0	NS
A	<i>Myiarchus crinitus</i>	Great Crested Flycatcher				S1B	36	24.1 ± 7.0	NS
A	<i>Cistothorus palustris</i>	Marsh Wren				S1B	62	45.3 ± 0.0	NS
A	<i>Mimus polyglottos</i>	Northern Mockingbird				S1B	122	24.1 ± 7.0	NS
A	<i>Toxostoma rufum</i>	Brown Thrasher				S1B	23	36.2 ± 0.0	NS
A	<i>Vireo gilvus</i>	Warbling Vireo				S1B	44	35.8 ± 7.0	NS
A	<i>Setophaga pinus</i>	Pine Warbler				S1B	75	17.2 ± 7.0	NS
A	<i>Calidris minutilla</i>	Least Sandpiper				S1B,S3M	1240	18.4 ± 0.0	NS
A	<i>Charadrius semipalmatus</i>	Semipalmated Plover				S1B,S3S4M	1887	18.4 ± 0.0	NS
A	<i>Vespertilionidae sp.</i>	bat species				S1S2	157	13.9 ± 0.0	NS
A	<i>Lasiurus cinereus</i>	Hoary Bat				S1S2B,S1M	19	66.8 ± 0.0	NS
A	<i>Pluvialis dominica</i>	American Golden-Plover				S1S2M	192	20.5 ± 0.0	NS
A	<i>Vireo philadelphicus</i>	Philadelphia Vireo				S2?B	47	20.0 ± 7.0	NS
A	<i>Spatula clypeata</i>	Northern Shoveler				S2B	340	24.1 ± 7.0	NS
A	<i>Mareca strepera</i>	Gadwall				S2B	307	29.6 ± 7.0	NS
A	<i>Empidonax traillii</i>	Willow Flycatcher				S2B	58	11.7 ± 7.0	NS
A	<i>Setophaga tigrina</i>	Cape May Warbler				S2B	239	1.1 ± 0.0	NS
A	<i>Piranga olivacea</i>	Scarlet Tanager				S2B	33	14.6 ± 7.0	NS
A	<i>Poocetes gramineus</i>	Vesper Sparrow				S2B	95	4.6 ± 7.0	NS
A	<i>Molothrus ater</i>	Brown-headed Cowbird				S2B	243	10.7 ± 7.0	NS
A	<i>Bucephala clangula</i>	Common Goldeneye				S2B,S5N	98	21.1 ± 5.0	NS
A	<i>Branta bernicla</i>	Brant				S2M	30	36.8 ± 0.0	NS
A	<i>Phalacrocorax carbo</i>	Great Cormorant				S2S3	94	60.3 ± 0.0	NB
A	<i>Asio otus</i>	Long-eared Owl				S2S3	29	25.5 ± 7.0	NS
A	<i>Spinus pinus</i>	Pine Siskin				S2S3	450	3.4 ± 0.0	NS
A	<i>Cathartes aura</i>	Turkey Vulture				S2S3B	155	37.1 ± 7.0	NS
A	<i>Rallus limicola</i>	Virginia Rail				S2S3B	324	25.4 ± 7.0	NS
A	<i>Tringa semipalmata</i>	Willet				S2S3B	1082	23.3 ± 0.0	NS
A	<i>Petrochelidon pyrrhonota</i>	Cliff Swallow				S2S3B	496	5.5 ± 7.0	NS
A	<i>Pheucticus ludovicianus</i>	Rose-breasted Grosbeak				S2S3B	609	4.6 ± 7.0	NS
A	<i>Icterus galbula</i>	Baltimore Oriole				S2S3B	107	17.2 ± 7.0	NS
A	<i>Pinicola enucleator</i>	Pine Grosbeak				S2S3B,S5N	102	1.8 ± 0.0	NS
A	<i>Numerius phaeopus hudsonicus</i>	Hudsonian Whimbrel				S2S3M	181	23.3 ± 0.0	NS
A	<i>Calidris melanotos</i>	Pectoral Sandpiper				S2S3M	420	18.4 ± 0.0	NS
A	<i>Phalaropus fulicarius</i>	Red Phalarope				S2S3M	2	71.5 ± 0.0	NB
A	<i>Perisoreus canadensis</i>	Canada Jay				S3	587	4.6 ± 7.0	NS
A	<i>Poecile hudsonicus</i>	Boreal Chickadee				S3	565	0.8 ± 0.0	NS
A	<i>Sitta canadensis</i>	Red-breasted Nuthatch				S3	1264	1.9 ± 0.0	NS
A	<i>Alosa pseudoharengus</i>	Alewife				S3	28	26.4 ± 0.0	NS
A	<i>Salvelinus fontinalis</i>	Brook Trout				S3	60	15.6 ± 0.0	NS
A	<i>Salvelinus namaycush</i>	Lake Trout				S3	2	79.7 ± 0.0	NS
A	<i>Menidia menidia</i>	Atlantic Silverside				S3	4	51.3 ± 0.0	NB
A	<i>Sorex maritimensis</i>	Maritime Shrew				S3	105	57.3 ± 1.0	NB
A	<i>Synaptomys cooperi</i>	Southern Bog Lemming				S3	17	61.3 ± 0.0	NS
A	<i>Pekania pennanti</i>	Fisher				S3	4	50.4 ± 0.0	NS
A	<i>Calidris maritima</i>	Purple Sandpiper				S3?N	103	49.6 ± 15.0	NS
A	<i>Calcarius lapponicus</i>	Lapland Longspur				S3?N	35	57.9 ± 2.0	NB
A	<i>Falco sparverius</i>	American Kestrel				S3B	567	4.6 ± 7.0	NS
A	<i>Charadrius vociferus</i>	Killdeer				S3B	1002	5.5 ± 7.0	NS
A	<i>Gallinago delicata</i>	Wilson's Snipe				S3B	1182	4.6 ± 7.0	NS
A	<i>Sterna paradisaea</i>	Arctic Tern				S3B	7	57.4 ± 0.0	NB
A	<i>Coccyzus erythrophthalmus</i>	Black-billed Cuckoo				S3B	120	14.6 ± 7.0	NS
A	<i>Tyrannus tyrannus</i>	Eastern Kingbird				S3B	483	10.3 ± 7.0	NS
A	<i>Dumetella carolinensis</i>	Gray Catbird				S3B	584	5.5 ± 7.0	NS
A	<i>Cardellina pusilla</i>	Wilson's Warbler				S3B	115	14.6 ± 7.0	NS

Taxonomic Group	Scientific Name	Common Name	COSEWIC	SARA	Prov Legal Prot	Prov Rarity Rank	# recs	Distance (km)	Prov
A	<i>Tringa melanoleuca</i>	Greater Yellowlegs				S3B,S3S4M	2411	18.4 ± 0.0	NS
A	<i>Oceanodroma leucorhoa</i>	Leach's Storm-Petrel				S3B,S5M	1	87.7 ± 0.0	NB
A	<i>Rissa tridactyla</i>	Black-legged Kittiwake				S3B,S5N	2	36.3 ± 0.0	NS
A	<i>Fratercula arctica</i>	Atlantic Puffin				S3B,S5N	3	65.4 ± 0.0	NB
A	<i>Pluvialis squatarola</i>	Black-bellied Plover				S3M	1882	18.4 ± 0.0	NS
A	<i>Tringa flavipes</i>	Lesser Yellowlegs				S3M	1489	18.4 ± 0.0	NS
A	<i>Arenaria interpres</i>	Ruddy Turnstone				S3M	744	18.4 ± 0.0	NS
A	<i>Calidris pusilla</i>	Semipalmated Sandpiper				S3M	2351	18.4 ± 0.0	NS
A	<i>Calidris fuscicollis</i>	White-rumped Sandpiper				S3M	1025	18.4 ± 0.0	NS
A	<i>Limnodromus griseus</i>	Short-billed Dowitcher				S3M	1320	20.5 ± 0.0	NS
A	<i>Calidris alba</i>	Sanderling				S3M,S2N	1457	18.4 ± 0.0	NS
A	<i>Chroicocephalus ridibundus</i>	Black-headed Gull				S3N	10	58.5 ± 4.0	NB
A	<i>Somateria mollissima</i>	Common Eider				S3S4	159	32.9 ± 7.0	NS
A	<i>Picoides arcticus</i>	Black-backed Woodpecker				S3S4	139	4.6 ± 7.0	NS
A	<i>Loxia curvirostra</i>	Red Crossbill				S3S4	160	18.0 ± 7.0	NS
A	<i>Sorex palustris</i>	American Water Shrew				S3S4	2	57.3 ± 1.0	NB
A	<i>Botaurus lentiginosus</i>	American Bittern				S3S4B	893	17.2 ± 7.0	NS
A	<i>Spatula discors</i>	Blue-winged Teal				S3S4B	488	16.7 ± 0.0	NS
A	<i>Actitis macularius</i>	Spotted Sandpiper				S3S4B	945	4.6 ± 7.0	NS
A	<i>Empidonax flaviventris</i>	Yellow-bellied Flycatcher				S3S4B	640	1.1 ± 0.0	NS
A	<i>Regulus calendula</i>	Ruby-crowned Kinglet				S3S4B	1468	1.9 ± 0.0	NS
A	<i>Catharus fuscescens</i>	Veery				S3S4B	651	4.6 ± 7.0	NS
A	<i>Catharus ustulatus</i>	Swainson's Thrush				S3S4B	1653	1.9 ± 0.0	NS
A	<i>Oreothlypis peregrina</i>	Tennessee Warbler				S3S4B	411	4.6 ± 7.0	NS
A	<i>Setophaga castanea</i>	Bay-breasted Warbler				S3S4B	552	1.0 ± 0.0	NS
A	<i>Setophaga striata</i>	Blackpoll Warbler				S3S4B	87	5.5 ± 7.0	NS
A	<i>Passerella iliaca</i>	Fox Sparrow				S3S4B	37	12.1 ± 7.0	NS
A	<i>Mergus serrator</i>	Red-breasted Merganser				S3S4B,S5N	175	19.7 ± 7.0	NS
A	<i>Bucephala albeola</i>	Bufflehead				S3S4N	85	33.6 ± 11.0	NS
A	<i>Lanius borealis</i>	Northern Shrike				S3S4N	36	45.7 ± 0.0	NS
A	<i>Leucophaeus atricilla</i>	Laughing Gull				SHB	7	57.0 ± 0.0	NB
A	<i>Progne subis</i>	Purple Martin				SHB	39	15.5 ± 7.0	NS
A	<i>Eremophila alpestris</i>	Horned Lark				SHB,S4S5N	26	25.4 ± 7.0	NS
A	<i>Morus bassanus</i>	Northern Gannet				SHB,S5M	113	57.8 ± 0.0	NB
A	<i>Aythya americana</i>	Redhead				SHB,SNAM	10	45.9 ± 7.0	NS
I	<i>Gomphus ventricosus</i>	Skillet Clubtail	Endangered	Endangered		S1	2	72.4 ± 0.0	NS
I	<i>Danaus plexippus</i>	Monarch	Endangered	Special Concern	Endangered	S2B	301	7.9 ± 0.0	NS
I	<i>Danaus plexippus plexippus</i>	Monarch	Endangered	Special Concern		S2B	1	69.2 ± 0.0	NS
I	<i>Barnea truncata</i>	Atlantic Mud-piddock	Threatened	Threatened		S1	1	18.2 ± 1.0	NS
I	<i>Alasmidonta varicosa</i>	Brook Floater	Special Concern	Special Concern	Threatened	S1S2	10	12.1 ± 0.0	NS
I	<i>Bombus terricola</i>	Yellow-banded Bumblebee	Special Concern	Special Concern	Vulnerable	S3	90	18.9 ± 0.0	NS
I	<i>Cicindela formosa</i>	Big Sand Tiger Beetle				S1	1	78.7 ± 1.0	NS
I	<i>Satyrrium acadica</i>	Acadian Hairstreak				S1	18	26.0 ± 0.0	NS
I	<i>Erora laeta</i>	Early Hairstreak				S1	1	79.3 ± 0.0	PE
I	<i>Neurocordulia michaeli</i>	Broadtailed Shadowdragon				S1	2	97.2 ± 0.0	NS
I	<i>Somatochlora brevicincta</i>	Quebec Emerald				S1	2	44.9 ± 1.0	NS
I	<i>Leptodea ochracea</i>	Tidewater Mucket				S1	29	32.6 ± 0.0	NS
I	<i>Strophitus undulatus</i>	Creeper				S1	6	20.0 ± 0.0	NS
I	<i>Chlosyne nycteis</i>	Silvery Checkerspot				S1?	1	96.3 ± 0.0	NB
I	<i>Polygonia comma</i>	Eastern Comma				S1?	12	71.4 ± 0.0	NS
I	<i>Polygonia satyrus</i>	Satyr Comma				S1?	8	46.6 ± 0.0	NS
I	<i>Strymon melinus</i>	Grey Hairstreak				S1S2	4	49.7 ± 2.0	NS
I	<i>Nymphalis l-album</i>	Compton Tortoiseshell				S1S2	15	32.8 ± 2.0	NS
I	<i>Somatochlora kennedyi</i>	Kennedy's Emerald				S1S2	5	45.4 ± 0.0	NS
I	<i>Coenagrion resolutum</i>	Taiga Bluet				S1S2	26	25.5 ± 0.0	NS
I	<i>Stylurus scudderi</i>	Zebra Clubtail				S1S2	6	69.1 ± 1.0	NS
I	<i>Lycaena hyllus</i>	Bronze Copper				S2	153	31.7 ± 0.0	NS
I	<i>Lycaena dospassosi</i>	Salt Marsh Copper				S2	108	33.2 ± 0.0	NS

Taxonomic Group	Scientific Name	Common Name	COSEWIC	SARA	Prov Legal Prot	Prov Rarity Rank	# recs	Distance (km)	Prov
	<i>Satyrium calanus</i>	Banded Hairstreak				S2	39	27.3 ± 2.0	NS
	<i>Boloria chariclea</i>	Arctic Fritillary				S2	10	33.3 ± 2.0	NS
	<i>Aglais milberti</i>	Milbert's Tortoiseshell				S2	23	24.0 ± 2.0	NS
	<i>Aglais milberti milberti</i>	Milbert's Tortoise Shell				S2	7	34.6 ± 0.0	NS
	<i>Epithea princeps</i>	Prince Baskettail				S2	17	16.0 ± 1.0	NS
	<i>Somatochlora williamsoni</i>	Williamson's Emerald				S2	8	52.8 ± 0.0	NS
	<i>Williamsonia fletcheri</i>	Ebony Boghaunter				S2	11	26.5 ± 0.0	NS
	<i>Enallagma signatum</i>	Orange Bluet				S2	3	32.4 ± 0.0	NS
	<i>Margaritifera margaritifera</i>	Eastern Pearlshell				S2	126	9.3 ± 1.0	NS
	<i>Pantala hymenaea</i>	Spot-Winged Glider				S2?B	3	44.9 ± 1.0	NS
	<i>Thorybes pylades</i>	Northern Cloudywing				S2S3	17	20.7 ± 2.0	NS
	<i>Amblyscirtes hegon</i>	Pepper and Salt Skipper				S2S3	22	16.5 ± 0.0	NS
	<i>Satyrium liparops</i>	Striped Hairstreak				S2S3	42	17.8 ± 4.0	NS
	<i>Euphydryas phaeton</i>	Baltimore Checkerspot				S2S3	63	15.4 ± 2.0	NS
	<i>Gomphus descriptus</i>	Harpoon Clubtail				S2S3	4	11.2 ± 0.0	NS
	<i>Ophiogomphus aspersus</i>	Brook Snaketail				S2S3	6	18.9 ± 0.0	NS
	<i>Ophiogomphus mainensis</i>	Maine Snaketail				S2S3	8	46.0 ± 0.0	NS
	<i>Ophiogomphus rupinsulensis</i>	Rusty Snaketail				S2S3	20	67.8 ± 0.0	NS
	<i>Somatochlora forcipata</i>	Forcinate Emerald				S2S3	2	80.9 ± 0.0	NS
	<i>Somatochlora franklini</i>	Delicate Emerald				S2S3	6	17.2 ± 1.0	NS
	<i>Alasmidonta undulata</i>	Triangle Floater				S2S3	33	45.2 ± 0.0	NS
	<i>Astyleiopus variegatus</i>	A Longhorned Beetle				S3	1	51.2 ± 0.0	NS
	<i>Strophiona nitens</i>	a Longhorned Beetle				S3	1	98.4 ± 0.0	NS
	<i>Carabus maeander</i>	a Ground Beetle				S3	1	98.6 ± 1.0	NB
	<i>Hippodamia parenthesis</i>	Parenthesis Lady Beetle				S3	5	61.8 ± 0.0	NB
	<i>Naemia seriata</i>	a Ladybird beetle				S3	22	60.5 ± 0.0	NB
	<i>Chilocorus stigma</i>	Twice-stabbed Lady Beetle				S3	7	88.4 ± 0.0	PE
	<i>Myzia pullata</i>	Streaked Lady Beetle				S3	2	65.6 ± 0.0	NB
	<i>Trachysida aspera</i>	a Longhorned Beetle				S3	2	82.4 ± 0.0	NB
	<i>Dicerca tenebrosa</i>	Dark Jewel Beetle				S3	1	79.2 ± 0.0	NS
	<i>Astylopsis sexguttata</i>	A Longhorned Beetle				S3	1	84.9 ± 0.0	NS
	<i>Callophrys henrici</i>	Henry's Elfin				S3	20	71.0 ± 7.0	NS
	<i>Callophrys lanoraieensis</i>	Bog Elfin				S3	9	48.8 ± 1.0	NS
	<i>Speyeria aphrodite</i>	Aphrodite Fritillary				S3	40	15.5 ± 2.0	NS
	<i>Polygonia faunus</i>	Green Comma				S3	24	11.2 ± 0.0	NS
	<i>Megisto cymela</i>	Little Wood-satyr				S3	31	17.8 ± 1.0	NS
	<i>Oeneis jutta</i>	Jutta Arctic				S3	36	35.1 ± 0.0	NS
	<i>Aeshna clepsydra</i>	Mottled Darner				S3	5	67.8 ± 0.0	NS
	<i>Aeshna constricta</i>	Lance-Tipped Darner				S3	38	20.4 ± 0.0	NS
	<i>Boyeria grafiana</i>	Ocellated Darner				S3	8	20.4 ± 0.0	NS
	<i>Gomphaeschna furcillata</i>	Harlequin Darner				S3	7	57.0 ± 1.0	NS
	<i>Somatochlora tenebrosa</i>	Clamp-Tipped Emerald				S3	9	44.9 ± 1.0	NS
	<i>Nannothemis bella</i>	Elfin Skimmer				S3	24	48.4 ± 1.0	NS
	<i>Sympetrum danae</i>	Black Meadowhawk				S3	2	78.3 ± 0.0	NB
	<i>Enallagma vernale</i>	Vernal Bluet				S3	4	16.0 ± 1.0	NS
	<i>Amphiagrion saucium</i>	Eastern Red Damsel				S3	9	42.1 ± 1.0	NS
	<i>Cupido comyntas</i>	Eastern Tailed Blue				S3?	21	25.1 ± 0.0	NS
	<i>Polygonia interrogationis</i>	Question Mark				S3B	159	17.4 ± 0.0	NS
	<i>Erynnis juvenalis</i>	Juvenal's Duskywing				S3S4	54	27.3 ± 2.0	NS
	<i>Amblyscirtes vialis</i>	Common Roadside-Skipper				S3S4	47	40.0 ± 0.0	NS
	<i>Polygonia progne</i>	Grey Comma				S3S4	56	12.0 ± 0.0	NS
	<i>Lanthus parvulus</i>	Northern Pygmy Clubtail				S3S4	17	4.5 ± 0.0	NS
	<i>Lampsilis radiata</i>	Eastern Lampmussel				S3S4	58	16.8 ± 0.0	NS
N	<i>Erioderma pedicellatum</i> (Atlantic pop.)	Boreal Felt Lichen - Atlantic pop.	Endangered	Endangered	Endangered	S1	131	89.4 ± 0.0	NS
N	<i>Erioderma mollissimum</i>	Graceful Felt Lichen	Endangered	Endangered	Endangered	S1S2	6	89.4 ± 0.0	NS
N	<i>Peltigera hydrothyrta</i>	Eastern Waterfan	Threatened	Threatened	Threatened	S1	235	16.1 ± 0.0	NS
N	<i>Pannaria lurida</i>	Wrinkled Shingle Lichen	Threatened	Threatened	Threatened	S1S2	116	57.1 ± 0.0	NS

Taxonomic Group	Scientific Name	Common Name	COSEWIC	SARA	Prov Legal Prot	Prov Rarity Rank	# recs	Distance (km)	Prov
N	<i>Fuscopannaria leucosticta</i>	White-rimmed Shingle Lichen	Threatened			S2S3	3	89.3 ± 0.0	NS
N	<i>Anzia colpodes</i>	Black-foam Lichen	Threatened	Threatened	Threatened	S3	22	15.7 ± 1.0	NS
N	<i>Sclerophora peronella</i> (Atlantic pop.)	Frosted Glass-whiskers (Atlantic population)	Special Concern	Special Concern		S1?	12	60.3 ± 0.0	NS
N	<i>Pectenium plumbea</i>	Blue Felt Lichen	Special Concern	Special Concern	Vulnerable	S3	42	52.6 ± 0.0	NS
N	<i>Fissidens exilis</i>	Pygmy Pocket Moss	Not At Risk			S1S2	13	50.6 ± 0.0	NS
N	<i>Pseudevernia cladonia</i>	Ghost Antler Lichen	Not At Risk			S2S3	9	89.3 ± 0.0	NS
N	<i>Aloina brevirostris</i>	Short-Beaked Rigid Screw Moss				S1	1	70.0 ± 2.0	NS
N	<i>Umbilicaria vellea</i>	Grizzled Rocktripe Lichen				S1	2	96.2 ± 5.0	NS
N	<i>Usnea perplexans</i>	Powdered Beard Lichen				S1	1	55.4 ± 0.0	NS
N	<i>Leptogium dactylinum</i>	Brown-buttoned Jellyskin Lichen				S1	1	74.5 ± 0.0	NS
N	<i>Collema cristatum</i>	Fingered Tarpaper Lichen				S1	3	64.7 ± 0.0	NS
N	<i>Ephebe perspinulosa</i>	Thread Lichen				S1	1	74.6 ± 1.0	NS
N	<i>Fuscopannaria praetermissa</i>	Moss Shingles Lichen				S1	1	70.9 ± 0.0	NS
N	<i>Leptogium schraderi</i>	Schrader's Jellyskin Lichen				S1	1	40.0 ± 0.0	NS
N	<i>Collema fuscovirens</i>	Crumpled Rock Tarpaper Lichen				S1	1	90.6 ± 0.0	NS
N	<i>Leptogium hibernicum</i>	Hibernia Jellyskin Lichen				S1	1	89.8 ± 0.0	NS
N	<i>Peltigera lepidophora</i>	Scaly Pelt Lichen				S1	3	63.0 ± 0.0	NS
N	<i>Calypogeia neogaea</i>	Common Pouchwort				S1?	1	39.5 ± 0.0	NS
N	<i>Moerckia hibernica</i>	Irish Ruffwort				S1?	1	44.7 ± 0.0	NS
N	<i>Aloina rigida</i>	Aloe-Like Rigid Screw Moss				S1?	5	18.4 ± 0.0	NS
N	<i>Bryum muehlenbeckii</i>	Muehlenbeck's Bryum Moss				S1?	2	85.9 ± 0.0	NS
N	<i>Campylostelium saxicola</i>	a Moss				S1?	2	79.1 ± 0.0	PE
N	<i>Conardia compacta</i>	Coast Creeping Moss				S1?	1	98.2 ± 1.0	NB
N	<i>Tortula obtusifolia</i>	a Moss				S1?	3	43.2 ± 1.0	NS
N	<i>Didymodon tophaceus</i>	Olive Beard Moss				S1?	1	45.3 ± 0.0	NS
N	<i>Paludella squarrosa</i>	Tufted Fen Moss				S1?	3	63.2 ± 0.0	NS
N	<i>Physcomitrium immersum</i>	a Moss				S1?	1	68.3 ± 0.0	NS
N	<i>Schistostega pennata</i>	Luminous Moss				S1?	1	60.4 ± 0.0	NS
N	<i>Timmia norvegica</i>	a moss				S1?	2	97.9 ± 0.0	NB
N	<i>Syntrichia ruralis</i>	a Moss				S1?	1	89.1 ± 0.0	NS
N	<i>Trichodon cylindricus</i>	Cylindric Hairy-teeth Moss				S1?	1	89.6 ± 3.0	NS
N	<i>Collema crispum</i>	Crinkled Pulp Lichen				S1?	1	45.3 ± 0.0	NS
N	<i>Polychidium muscicola</i>	Eyed Mossthorns				S1?	1	82.1 ± 0.0	NS
N	<i>Aulacomnium heterostichum</i>	Woollybear Lichen				S1S2	2	29.2 ± 1.0	NS
N	<i>Brachythecium turgidum</i>	One-sided Groove Moss				S1S2	3	84.7 ± 0.0	NS
N	<i>Dicranoweisia crispula</i>	Thick Ragged Moss				S1S2	1	95.1 ± 0.0	NB
N	<i>Didymodon rigidulus</i>	Mountain Thatch Moss				S1S2	8	96.9 ± 2.0	NB
N	<i>Didymodon ferrugineus</i>	Rigid Screw Moss				S1S2	1	97.7 ± 0.0	NB
N	<i>Hygrohypnum montanum</i>	a moss				S1S2	1	99.5 ± 1.0	NB
N	<i>Hypnum pratense</i>	a Moss				S1S2	1	88.3 ± 3.0	NS
N	<i>Mnium thomsonii</i>	Meadow Plait Moss				S1S2	1	68.9 ± 2.0	NS
N	<i>Tortula acaulon</i>	Thomson's Leafy Moss				S1S2	1	85.1 ± 2.0	NS
N	<i>Plagiothecium latebricola</i>	Cuspidate Earth Moss				S1S2	2	29.0 ± 3.0	NS
N	<i>Platydictya confervoides</i>	Alder Silk Moss				S1S2	1	70.6 ± 0.0	NS
N	<i>Seligeria calcarea</i>	a Moss				S1S2	2	98.2 ± 0.0	NB
N	<i>Sematophyllum demissum</i>	Chalk Brittle Moss				S1S2	1	83.6 ± 2.0	NS
N	<i>Sphagnum platyphyllum</i>	a Moss				S1S2	2	81.1 ± 3.0	NS
N	<i>Tetradontium brownianum</i>	Flat-leaved Peat Moss				S1S2	8	39.4 ± 0.0	NS
N	<i>Timmia megapolitana</i>	Little Georgia				S1S2	3	17.1 ± 0.0	NS
N	<i>Tortula mucronifolia</i>	Metropolitan Timmia Moss				S1S2	1	54.2 ± 3.0	NS
N	<i>Bryohaplocladium microphyllum</i>	Mucronate Screw Moss				S1S2	1	34.2 ± 5.0	NS
N		Tiny-leaved Haplocladium Moss				S1S2	1		NS

Taxonomic Group	Scientific Name	Common Name	COSEWIC	SARA	Prov Legal Prot	Prov Rarity Rank	# recs	Distance (km)	Prov
N	<i>Collema bachmanianum</i>	Bachman's Tarpaper Lichen				S1S2	1	65.1 ± 0.0	NS
N	<i>Catapyrenium squamulosum</i>	Limy Soil Stipplescale Lichen				S1S2	1	79.3 ± 6.0	NS
N	<i>Cladonia sulphurina</i>	Greater Sulphur-cup Lichen				S1S2	1	93.5 ± 1.0	NB
N	<i>Sticta limbata</i>	Powdered Moon Lichen				S1S2	3	92.3 ± 0.0	NS
N	<i>Candelaria concolor</i>	Elfin Candleflame Lichen				S1S2	3	93.4 ± 0.0	NB
N	<i>Usnea chaetophora</i>	Articulated Beard Lichen				S1S3	1	92.1 ± 0.0	NS
N	<i>Stereocaulon grande</i>	Grand Foam Lichen				S1S3	1	17.6 ± 0.0	NS
N	<i>Stereocaulon intermedium</i>	Pacific Brain Foam Lichen				S1S3	6	60.7 ± 2.0	NS
N	<i>Cystocoleus ebeneus</i>	Rockgossamer Lichen				S2	2	96.9 ± 0.0	NS
N	<i>Nephroma resupinatum</i>	a lichen				S2	2	90.8 ± 0.0	NS
N	<i>Parmotrema reticulatum</i>	Netted Ruffle Lichen				S2	3	58.8 ± 0.0	NS
N	<i>Riccardia multifida</i>	Delicate Germanderwort				S2?	1	89.5 ± 0.0	NS
N	<i>Anacamptodon splachnoides</i>	a Moss				S2?	1	29.0 ± 3.0	NS
N	<i>Anomodon viticulosus</i>	a Moss				S2?	1	20.5 ± 5.0	NS
N	<i>Weissia muhlenbergiana</i>	a Moss				S2?	5	68.9 ± 1.0	NS
N	<i>Atrichum angustatum</i>	Lesser Smoothcap Moss				S2?	2	12.4 ± 5.0	NS
N	<i>Bryum algovicum</i>	a Moss				S2?	1	70.0 ± 2.0	NS
N	<i>Campyllum polygamum</i>	a Moss				S2?	3	45.3 ± 0.0	NS
N	<i>Campyllum radicale</i>	Long-stalked Fine Wet Moss				S2?	1	88.3 ± 3.0	NS
N	<i>Dicranum condensatum</i>	Condensed Broom Moss				S2?	2	88.3 ± 3.0	NS
N	<i>Ditrichum rhynchostegium</i>	a Moss				S2?	2	87.2 ± 0.0	PE
N	<i>Fissidens taxifolius</i>	Yew-leaved Pocket Moss				S2?	8	50.6 ± 0.0	NS
N	<i>Hygrohypnum bestii</i>	Best's Brook Moss				S2?	1	92.6 ± 1.0	NB
N	<i>Orthotrichum anomalum</i>	Anomalous Bristle Moss				S2?	4	74.3 ± 2.0	NS
N	<i>Philonotis marchica</i>	a Moss				S2?	2	50.2 ± 0.0	NS
N	<i>Physcomitrium collenchymatum</i>	a Moss				S2?	1	89.6 ± 0.0	NS
N	<i>Platydictya jungermannioides</i>	False Willow Moss				S2?	3	65.7 ± 0.0	NS
N	<i>Racomitrium affine</i>	a Moss				S2?	2	77.6 ± 2.0	NS
N	<i>Rhytidium rugosum</i>	Wrinkle-leaved Moss				S2?	1	97.7 ± 1.0	NB
N	<i>Saelania glaucescens</i>	Blue Dew Moss				S2?	3	40.7 ± 0.0	NS
N	<i>Seligeria donniana</i>	Donian Beardless Moss				S2?	1	39.1 ± 3.0	NS
N	<i>Sematophyllum marylandicum</i>	a Moss				S2?	2	72.6 ± 6.0	NS
N	<i>Tetraplodon angustatus</i>	Toothed-leaved Nitrogen Moss				S2?	1	89.1 ± 0.0	NS
N	<i>Tortella fragilis</i>	Fragile Twisted Moss				S2?	1	97.9 ± 0.0	NB
N	<i>Anomobryum filiforme</i>	a moss				S2?	3	97.8 ± 1.0	NB
N	<i>Plagiomnium rostratum</i>	Long-beaked Leafy Moss				S2?	4	88.5 ± 2.0	NS
N	<i>Pseudotaxiphyllum distichaceum</i>	a Moss				S2?	2	29.1 ± 0.0	NS
N	<i>Cyrtomnium hymenophylloides</i>	Short-pointed Lantern Moss				S2?	6	40.7 ± 0.0	NS
N	<i>Platylomella lescurii</i>	a Moss				S2?	1	60.4 ± 0.0	NS
N	<i>Phylliscum demangeonii</i>	Black Rock-wafer Lichen				S2?	1	83.1 ± 0.0	NS
N	<i>Leptogium teretiusculum</i>	Beaded Jellyskin Lichen				S2?	13	63.4 ± 0.0	NS
N	<i>Rostania occultata</i>	Crusted Tarpaper Lichen				S2?	1	82.3 ± 0.0	NS
N	<i>Placynthium flabelliforme</i>	Scaly Ink Lichen				S2?	3	82.0 ± 17.0	NS
N	<i>Peltigera collina</i>	Tree Pelt Lichen				S2?	5	38.8 ± 0.0	NS
N	<i>Ephemerum serratum</i>	a Moss				S2S3	6	50.6 ± 0.0	NS
N	<i>Eurhynchium hians</i>	Light Beaked Moss				S2S3	4	67.4 ± 0.0	NS
N	<i>Platydictya subtilis</i>	Bark Willow Moss				S2S3	4	29.0 ± 3.0	NS
N	<i>Tortula truncata</i>	a Moss				S2S3	6	50.6 ± 0.0	NS
N	<i>Limprichtia revolvens</i>	a Moss				S2S3	1	63.2 ± 0.0	NS
N	<i>Collema leptaleum</i>	Crumpled Bat's Wing Lichen				S2S3	41	26.0 ± 0.0	NS
N	<i>Solorina saccata</i>	Woodland Owl Lichen				S2S3	9	64.7 ± 0.0	NS

Taxonomic Group	Scientific Name	Common Name	COSEWIC	SARA	Prov Legal Prot	Prov Rarity Rank	# recs	Distance (km)	Prov
N	<i>Ahtiana aurescens</i>	Eastern Candlewax Lichen				S2S3	5	83.2 ± 2.0	NS
N	<i>Usnocetraria oakesiana</i>	Yellow Band Lichen				S2S3	10	59.0 ± 0.0	NS
N	<i>Cladonia mateocyatha</i>	Mixed-up Pixie-cup				S2S3	3	80.0 ± 1.0	NS
N	<i>Cladonia parasitica</i>	Fence-rail Lichen				S2S3	3	13.4 ± 1.0	NS
N	<i>Hypotrachyna catabienseis</i>	Powder-tipped Antler Lichen				S2S3	3	82.3 ± 0.0	NS
N	<i>Leptogium milligranum</i>	Stretched Jellyskin Lichen				S2S3	8	17.6 ± 0.0	NS
N	<i>Leptogium tenuissimum</i>	Birdnest Jellyskin Lichen				S2S3	5	45.0 ± 0.0	NS
N	<i>Melanohalea septentrionalis</i>	Northern Camouflage Lichen				S2S3	3	54.9 ± 0.0	NS
N	<i>Myelochroa aurulenta</i>	Powdery Axil-bristle Lichen				S2S3	6	44.5 ± 0.0	NS
N	<i>Parmelia fertilis</i>	Fertile Shield Lichen				S2S3	2	25.5 ± 0.0	NS
N	<i>Hypotrachyna minarum</i>	Hairless-spined Shield Lichen				S2S3	4	89.9 ± 1.0	NS
N	<i>Parmeliopsis ambigua</i>	Green Starburst Lichen				S2S3	1	76.2 ± 2.0	NS
N	<i>Racodium rupestre</i>	Rockhair Lichen				S2S3	1	87.5 ± 1.0	NS
N	<i>Umbilicaria polyphylla</i>	Petalled Rocktripe Lichen				S2S3	1	76.2 ± 2.0	NS
N	<i>Usnea cavernosa</i>	Pitted Beard Lichen				S2S3	2	55.4 ± 0.0	NS
N	<i>Usnea ceratina</i>	Warty Beard Lichen				S2S3	2	28.3 ± 0.0	NS
N	<i>Usnea mutabilis</i>	Bloody Beard Lichen				S2S3	1	55.6 ± 0.0	NS
N	<i>Usnea rubicunda</i>	Red Beard Lichen				S2S3	3	45.2 ± 0.0	NS
N	<i>Stereocaulon condensatum</i>	Granular Soil Foam Lichen				S2S3	2	67.8 ± 0.0	NS
N	<i>Physcia subtilis</i>	Slender Rosette Lichen				S2S3	1	87.5 ± 0.0	NS
N	<i>Cladonia coccifera</i>	Eastern Boreal Pixie-cup Lichen				S2S3	2	69.5 ± 4.0	NS
N	<i>Cladonia deformis</i>	Lesser Sulphur-cup Lichen				S2S3	5	60.7 ± 2.0	NS
N	<i>Cladonia phyllophora</i>	Felt Lichen				S2S3	2	82.8 ± 4.0	NS
N	<i>Hypotrachyna afrorevoluta</i>	Pustulate Revolute Loop Lichen				S2S3	3	89.9 ± 0.0	NS
N	<i>Usnea flammea</i>	Coastal Bushy Beard Lichen				S2S3	1	92.3 ± 0.0	NS
N	<i>Ramalina thrausta</i>	Angelhair Ramalina Lichen				S3	8	60.5 ± 0.0	NS
N	<i>Collema tenax</i>	Soil Tarpaper Lichen				S3	7	40.0 ± 0.0	NS
N	<i>Collema nigrescens</i>	Blistered Tarpaper Lichen				S3	8	17.4 ± 0.0	NS
N	<i>Sticta fuliginosa</i>	Peppered Moon Lichen				S3	17	13.3 ± 1.0	NS
N	<i>Leptogium subtile</i>	Appressed Jellyskin Lichen				S3	13	26.2 ± 1.0	NS
N	<i>Fuscopannaria ahlneri</i>	Corrugated Shingles Lichen				S3	31	4.6 ± 0.0	NS
N	<i>Heterodermia speciosa</i>	Powdered Fringe Lichen				S3	33	17.6 ± 0.0	NS
N	<i>Heterodermia squamulosa</i>	Scaly Fringe Lichen				S3	51	56.0 ± 3.0	NS
N	<i>Leptogium corticola</i>	Blistered Jellyskin Lichen				S3	29	63.5 ± 0.0	NS
N	<i>Leptogium lichenooides</i>	Tattered Jellyskin Lichen				S3	28	40.0 ± 0.0	NS
N	<i>Nephroma bellum</i>	Naked Kidney Lichen				S3	3	73.2 ± 0.0	NS
N	<i>Placynthium nigrum</i>	Common Ink Lichen				S3	2	80.5 ± 0.0	NS
N	<i>Punctelia appalachensis</i>	Appalachian Speckleback Lichen				S3	69	53.8 ± 0.0	NS
N	<i>Moelleropsis nebulosa</i>	Blue-gray Moss Shingle Lichen				S3	16	84.2 ± 0.0	NS
N	<i>Usnea hirta</i>	Bristly Beard Lichen				S3	2	92.6 ± 1.0	NB
N	<i>Fuscopannaria soledata</i>	a Lichen				S3	1	87.5 ± 1.0	NS
N	<i>Ephebe lanata</i>	Waterside Rockshag Lichen				S3	3	82.0 ± 17.0	NS
N	<i>Usnea macaronesica</i>	Beard Lichen				S3	3	88.6 ± 1.0	NS
N	<i>Metzgeria conjugata</i>	Rock Veilwort				S3?	1	72.5 ± 0.0	NS
N	<i>Barbula convoluta</i>	Lesser Bird's-claw Beard Moss				S3?	2	70.6 ± 0.0	NS
N	<i>Calliergon giganteum</i>	Giant Spear Moss				S3?	2	68.4 ± 3.0	NS
N	<i>Drummondia prorepens</i>	a Moss				S3?	1	78.8 ± 5.0	NS
N	<i>Anomodon tristis</i>	a Moss				S3?	10	56.1 ± 1.0	NS
N	<i>Helodium blandowii</i>	Wetland-plume Moss				S3?	6	61.3 ± 3.0	NS
N	<i>Mnium stellare</i>	Star Leafy Moss				S3?	3	29.2 ± 1.0	NS
N	<i>Sphagnum riparium</i>	Streamside Peat Moss				S3?	2	83.3 ± 1.0	NS
N	<i>Phaeophyscia pusilloides</i>	Pompom-tipped Shadow				S3?	3	77.2 ± 7.0	NS

Taxonomic Group	Scientific Name	Common Name	COSEWIC	SARA	Prov Legal Prot	Prov Rarity Rank	# recs	Distance (km)	Prov
N	<i>Cladonia stygia</i>	Lichen Black-footed Reindeer Lichen				S3?	2	74.4 ± 0.0	NB
N	<i>Anomodon rugelii</i>	Rugel's Anomodon Moss				S3S4	2	57.3 ± 0.0	NS
N	<i>Dichelyma capillaceum</i>	Hairlike Dichelyma Moss				S3S4	1	86.8 ± 3.0	NS
N	<i>Dicranella varia</i>	a Moss				S3S4	3	39.5 ± 0.0	NS
N	<i>Dicranum leioneuron</i>	a Dicranum Moss				S3S4	1	85.6 ± 0.0	NB
N	<i>Encalypta procera</i>	Slender Extinguisher Moss				S3S4	7	39.1 ± 3.0	NS
N	<i>Myurella julacea</i>	Small Mouse-tail Moss				S3S4	3	40.7 ± 0.0	NS
N	<i>Splachnum ampullaceum</i>	Cruet Dung Moss				S3S4	4	56.8 ± 0.0	NB
N	<i>Thamnobryum alleghaniense</i>	a Moss				S3S4	12	30.7 ± 4.0	NS
N	<i>Schistidium agassizii</i>	Elf Bloom Moss				S3S4	1	98.3 ± 1.0	NB
N	<i>Hylocomiastrum pyrenaicum</i>	a Feather Moss				S3S4	1	39.1 ± 3.0	NS
N	<i>Arctoparmelia incurva</i>	Finger Ring Lichen				S3S4	5	98.1 ± 0.0	NS
N	<i>Hypogymnia vittata</i>	Slender Monk's Hood Lichen				S3S4	30	55.4 ± 0.0	NS
N	<i>Leptogium acadense</i>	Acadian Jellyskin Lichen				S3S4	16	20.7 ± 0.0	NS
N	<i>Cladonia floerkeana</i>	Gritty British Soldiers Lichen				S3S4	1	97.4 ± 0.0	NS
N	<i>Melanohalea olivacea</i>	Spotted Camouflage Lichen				S3S4	9	55.4 ± 0.0	NS
N	<i>Parmeliopsis hyperopta</i>	Gray Starburst Lichen				S3S4	4	64.8 ± 1.0	NS
N	<i>Parmotrema chinense</i>	Powdered Ruffle Lichen				S3S4	9	58.9 ± 0.0	NS
N	<i>Physconia detersa</i>	Bottlebrush Frost Lichen				S3S4	19	17.6 ± 0.0	NS
N	<i>Coccocarpia palmicola</i>	Salted Shell Lichen				S3S4	76	78.2 ± 0.0	NS
N	<i>Physcia caesia</i>	Blue-gray Rosette Lichen				S3S4	1	67.7 ± 0.0	NS
N	<i>Physcia tenella</i>	Fringed Rosette Lichen				S3S4	1	92.8 ± 0.0	NB
N	<i>Anaptychia palmulata</i>	Shaggy Fringed Lichen				S3S4	56	31.8 ± 0.0	NS
N	<i>Bryoria pikei</i>	Pike's Horsehair Lichen				S3S4	9	18.5 ± 4.0	NS
N	<i>Evernia prunastri</i>	Valley Oakmoss Lichen				S3S4	23	16.7 ± 0.0	NS
N	<i>Dermatocarpon luridum</i>	Brookside Stippleback Lichen				S3S4	33	23.2 ± 0.0	NS
N	<i>Heterodermia neglecta</i>	Fringe Lichen				S3S4	37	53.8 ± 0.0	NS
P	<i>Fraxinus nigra</i>	Black Ash	Threatened		Threatened	S1S2	518	12.6 ± 0.0	NS
P	<i>Bartonia paniculata</i> ssp. <i>paniculata</i>	Branched Bartonia	Threatened	Threatened		SNA	1	85.0 ± 10.0	NS
P	<i>Lilaeopsis chinensis</i>	Eastern Lilaeopsis	Special Concern	Special Concern	Vulnerable	S2	16	22.5 ± 1.0	NS
P	<i>Isoetes prototypus</i>	Prototype Quillwort	Special Concern	Special Concern	Vulnerable	S2	13	7.8 ± 0.0	NS
P	<i>Floerkea proserpinacoides</i>	False Mermaidweed	Not At Risk			S2	25	49.2 ± 7.0	NS
P	<i>Crocanthemum canadense</i>	Long-branched Frostweed			Endangered	S1	2	99.7 ± 1.0	NS
P	<i>Cypripedium arietinum</i>	Ram's-Head Lady's-Slipper			Endangered	S1	180	27.0 ± 0.0	NS
P	<i>Thuja occidentalis</i>	Eastern White Cedar			Vulnerable	S1	1016	15.0 ± 0.0	NS
P	<i>Acer saccharinum</i>	Silver Maple				S1	12	80.2 ± 0.0	NS
P	<i>Osmorhiza depauperata</i>	Blunt Sweet Cicely				S1	1	70.9 ± 5.0	NS
P	<i>Sanicula odorata</i>	Clustered Sanicle				S1	13	40.1 ± 10.0	NS
P	<i>Zizia aurea</i>	Golden Alexanders				S1	39	26.3 ± 1.0	NS
P	<i>Antennaria rosea</i> ssp. <i>arida</i>	Rosy Pussytoes				S1	1	84.7 ± 0.0	NS
P	<i>Antennaria parlinii</i> ssp. <i>fallax</i>	Parlin's Pussytoes				S1	13	51.0 ± 7.0	NS
P	<i>Bidens hyperborea</i>	Estuary Beggarticks				S1	2	23.5 ± 0.0	NS
P	<i>Ageratina altissima</i>	White Snakeroot				S1	31	78.3 ± 10.0	NS
P	<i>Andersonglossum boreale</i>	Northern Wild Comfrey				S1	5	67.3 ± 1.0	NS
P	<i>Draba glabella</i>	Rock Whitlow-Grass				S1	6	54.0 ± 0.0	NS
P	<i>Lobelia spicata</i>	Pale-Spiked Lobelia				S1	13	25.4 ± 7.0	NS
P	<i>Stellaria crassifolia</i>	Fleshy Stitchwort				S1	3	92.5 ± 5.0	PE
P	<i>Hudsonia tomentosa</i>	Woolly Beach-heath				S1	9	71.5 ± 0.0	NB
P	<i>Elatine americana</i>	American Waterwort				S1	2	32.8 ± 0.0	NS
P	<i>Astragalus robbinsii</i> var. <i>minor</i>	Robbins' Milkvetch				S1	31	83.6 ± 2.0	NS
P	<i>Desmodium canadense</i>	Canada Tick-trefoil				S1	22	44.1 ± 5.0	NS
P	<i>Hylodesmum glutinosum</i>	Large Tick-trefoil				S1	20	59.7 ± 0.0	NS
P	<i>Ribes americanum</i>	Wild Black Currant				S1	7	40.0 ± 1.0	NS

Taxonomic Group	Scientific Name	Common Name	COSEWIC	SARA	Prov Legal Prot	Prov Rarity Rank	# recs	Distance (km)	Prov
P	<i>Fraxinus pennsylvanica</i>	Red Ash				S1	16	26.6 ± 0.0	NS
P	<i>Polygala polygama</i>	Racemed Milkwort				S1	3	99.7 ± 0.0	NS
P	<i>Polygonum achoreum</i>	Leathery Knotweed				S1	2	58.8 ± 0.0	NB
P	<i>Persicaria careyi</i>	Carey's Smartweed				S1	1	60.3 ± 3.0	NS
P	<i>Montia fontana</i>	Water Blinks				S1	4	82.8 ± 0.0	NS
P	<i>Lysimachia quadrifolia</i>	Whorled Yellow Loosestrife				S1	1	95.5 ± 0.0	NS
P	<i>Anemone parviflora</i>	Small-flowered Anemone				S1	9	76.8 ± 0.0	NB
P	<i>Clematis occidentalis</i>	Purple Clematis				S1	5	45.3 ± 0.0	NS
P	<i>Ranunculus pennsylvanicus</i>	Pennsylvania Buttercup				S1	31	17.4 ± 0.0	NS
P	<i>Amelanchier nantucketensis</i>	Nantucket Serviceberry				S1	1	44.9 ± 1.0	NS
P	<i>Salix myrtillifolia</i>	Blueberry Willow				S1	26	77.2 ± 0.0	NS
P	<i>Salix serissima</i>	Autumn Willow				S1	2	77.2 ± 0.0	NS
P	<i>Agalinis purpurea</i> var. <i>parviflora</i>	Small-flowered Purple False Foxglove				S1	19	43.6 ± 0.0	NS
P	<i>Dirca palustris</i>	Eastern Leatherwood				S1	56	52.8 ± 7.0	NS
P	<i>Boehmeria cylindrica</i>	Small-spike False-nettle				S1	2	67.2 ± 0.0	NS
P	<i>Pilea pumila</i>	Dwarf Clearweed				S1	36	48.2 ± 0.0	NS
P	<i>Carex chordorrhiza</i>	Creeping Sedge				S1	54	47.5 ± 1.0	NS
P	<i>Carex garberi</i>	Garber's Sedge				S1	4	51.7 ± 0.0	NS
P	<i>Carex granularis</i>	Limestone Meadow Sedge				S1	3	52.8 ± 0.0	NS
P	<i>Carex gynocrates</i>	Northern Bog Sedge				S1	2	77.2 ± 0.0	NS
P	<i>Carex haydenii</i>	Hayden's Sedge				S1	4	28.8 ± 50.0	NS
P	<i>Carex pellita</i>	Woolly Sedge				S1	12	27.7 ± 0.0	NS
P	<i>Carex laxiflora</i>	Loose-Flowered Sedge				S1	2	60.8 ± 1.0	NS
P	<i>Carex ormostachya</i>	Necklace Spike Sedge				S1	4	65.9 ± 1.0	NB
P	<i>Carex plantaginea</i>	Plantain-Leaved Sedge				S1	7	45.0 ± 0.0	NS
P	<i>Carex prairea</i>	Prairie Sedge				S1	2	77.0 ± 1.0	NS
P	<i>Carex tenuiflora</i>	Sparse-Flowered Sedge				S1	5	51.1 ± 0.0	NS
P	<i>Carex tincta</i>	Tinged Sedge				S1	5	82.2 ± 0.0	PE
P	<i>Carex viridula</i> var. <i>saxillitoralis</i>	Greenish Sedge				S1	1	67.8 ± 0.0	NS
P	<i>Cyperus lupulinus</i> ssp. <i>macilentus</i>	Hop Flatsedge				S1	2	86.8 ± 0.0	NS
P	<i>Scirpus atrovirens</i>	Dark-green Bulrush				S1	4	28.4 ± 0.0	NS
P	<i>Blysmopsis rufa</i>	Red Bulrush				S1	4	87.0 ± 1.0	PE
P	<i>Iris prismatica</i>	Slender Blue Flag				S1	1	90.5 ± 100.0	NS
P	<i>Juncus secundus</i>	Secund Rush				S1	1	87.5 ± 0.0	NS
P	<i>Juncus vaseyi</i>	Vasey Rush				S1	9	25.5 ± 0.0	NS
P	<i>Allium tricoccum</i>	Wild Leek				S1	48	53.5 ± 0.0	NS
P	<i>Trillium grandiflorum</i>	White Trillium				S1	3	77.0 ± 1.0	NS
P	<i>Malaxis monophyllos</i> var. <i>brachypoda</i>	North American White Adder's-mouth				S1	5	26.7 ± 1.0	NS
P	<i>Spiranthes casei</i> var. <i>casei</i>	Case's Ladies'-Tresses				S1	1	90.0 ± 0.0	NS
P	<i>Bromus latiglumis</i>	Broad-Flumed Brome				S1	33	20.6 ± 0.0	NS
P	<i>Calamagrostis stricta</i> ssp. <i>inexpansa</i>	Slim-stemmed Reed Grass				S1	1	58.2 ± 1.0	NB
P	<i>Elymus wiegandii</i>	Wiegand's Wild Rye				S1	20	18.4 ± 0.0	NS
P	<i>Elymus hystrix</i>	Spreading Wild Rye				S1	12	39.9 ± 1.0	NS
P	<i>Graphephorum melicoides</i>	Purple False Oats				S1	1	97.9 ± 0.0	NB
P	<i>Adiantum pedatum</i>	Northern Maidenhair Fern				S1	11	41.3 ± 1.0	NS
P	<i>Equisetum palustre</i>	Marsh Horsetail				S1	1	79.3 ± 5.0	NS
P	<i>Selaginella rupestris</i>	Rock Spikemoss				S1	1	67.5 ± 0.0	NS
P	<i>Solidago hispida</i>	Hairy Goldenrod				S1?	1	79.6 ± 10.0	NB
P	<i>Suaeda rolandii</i>	Roland's Sea-Blite				S1?	13	23.0 ± 2.0	NS
P	<i>Carex pennsylvanica</i>	Pennsylvania Sedge				S1?	3	22.8 ± 0.0	NS
P	<i>Bolboschoenus robustus</i>	Sturdy Bulrush				S1?	2	33.8 ± 5.0	NS
P	<i>Dichanthelium lindheimeri</i>	Lindheimer's Panicgrass				S1?	2	90.2 ± 0.0	NS
P	<i>Rudbeckia laciniata</i>	Cut-Leaved Coneflower				S1S2	32	24.3 ± 0.0	NS

Taxonomic Group	Scientific Name	Common Name	COSEWIC	SARA	Prov Legal Prot	Prov Rarity Rank	# recs	Distance (km)	Prov
P	<i>Arabis pycnocarpa</i>	Cream-flowered Rockcress				S1S2	3	32.1 ± 0.0	NS
P	<i>Cardamine maxima</i>	Large Toothwort				S1S2	2	60.1 ± 0.0	NS
P	<i>Proserpinaca intermedia</i>	Intermediate Mermaidweed				S1S2	2	72.7 ± 0.0	NS
P	<i>Conopholis americana</i>	American Cancer-root				S1S2	3	73.2 ± 0.0	NS
P	<i>Anemone virginiana</i> var. <i>alba</i>	Virginia Anemone				S1S2	5	40.3 ± 7.0	NS
P	<i>Hepatica americana</i>	Round-lobed Hepatica				S1S2	58	28.3 ± 0.0	NS
P	<i>Ranunculus sceleratus</i>	Cursed Buttercup				S1S2	17	90.6 ± 0.0	NS
P	<i>Gratiola neglecta</i>	Clammy Hedge-Hyssop				S1S2	19	47.6 ± 0.0	NS
P	<i>Carex livida</i>	Livid Sedge				S1S2	22	51.1 ± 0.0	NS
P	<i>Juncus greenei</i>	Greene's Rush				S1S2	9	33.2 ± 5.0	NS
P	<i>Juncus alpinoarticulatus</i> ssp. <i>americanus</i>	Northern Green Rush				S1S2	3	92.4 ± 3.0	PE
P	<i>Platanthera huronensis</i>	Fragrant Green Orchid				S1S2	3	62.7 ± 10.0	NS
P	<i>Calamagrostis stricta</i> ssp. <i>stricta</i>	Slim-stemmed Reed Grass				S1S2	9	35.5 ± 7.0	NS
P	<i>Cinna arundinacea</i>	Sweet Wood Reed Grass				S1S2	20	62.9 ± 0.0	NS
P	<i>Festuca subverticillata</i>	Nodding Fescue				S1S2	15	17.5 ± 0.0	NS
P	<i>Cryptogramma stelleri</i>	Steller's Rockbrake				S1S2	3	19.5 ± 0.0	NS
P	<i>Woodsia alpina</i>	Alpine Cliff Fern				S1S2	3	96.1 ± 0.0	NB
P	<i>Selaginella selaginoides</i>	Low Spikemoss				S1S2	2	97.8 ± 0.0	NB
P	<i>Carex vacillans</i>	Estuarine Sedge				S1S3	4	51.3 ± 0.0	NB
P	<i>Conioselinum chinense</i>	Chinese Hemlock-parsley				S2	14	30.8 ± 0.0	NS
P	<i>Osmorhiza longistylis</i>	Smooth Sweet Cicely				S2	33	17.8 ± 1.0	NS
P	<i>Erigeron philadelphicus</i>	Philadelphia Fleabane				S2	7	45.9 ± 7.0	NS
P	<i>Lactuca hirsuta</i>	Hairy Lettuce				S2	4	70.7 ± 2.0	NS
P	<i>Solidago multiradiata</i>	Multi-rayed Goldenrod				S2	19	77.5 ± 0.0	NB
P	<i>Symphotrichum undulatum</i>	Wavy-leaved Aster				S2	7	62.6 ± 1.0	NS
P	<i>Symphotrichum ciliolatum</i>	Fringed Blue Aster				S2	33	5.5 ± 7.0	NS
P	<i>Impatiens pallida</i>	Pale Jewelweed				S2	6	51.1 ± 0.0	NS
P	<i>Caulophyllum thalictroides</i>	Blue Cohosh				S2	87	17.4 ± 0.0	NS
P	<i>Boechnera stricta</i>	Drummond's Rockcress				S2	13	19.4 ± 0.0	NS
P	<i>Cardamine parviflora</i>	Small-flowered Bittercress				S2	7	53.7 ± 0.0	NS
P	<i>Draba arabisans</i>	Rock Whitlow-Grass				S2	20	42.4 ± 0.0	NS
P	<i>Stellaria humifusa</i>	Saltmarsh Starwort				S2	16	28.5 ± 1.0	NS
P	<i>Stellaria longifolia</i>	Long-leaved Starwort				S2	18	19.5 ± 0.0	NS
P	<i>Oxybasis rubra</i>	Red Goosefoot				S2	2	83.5 ± 0.0	NS
P	<i>Hudsonia ericoides</i>	Pinebarren Golden Heather				S2	5	82.3 ± 0.0	NS
P	<i>Hypericum majus</i>	Large St John's-wort				S2	6	14.7 ± 0.0	NS
P	<i>Oxytropis campestris</i>	Field Locoweed				S2	1	84.8 ± 0.0	NS
P	<i>Oxytropis campestris</i> var. <i>johannensis</i>	Field Locoweed				S2	25	84.1 ± 1.0	NS
P	<i>Myriophyllum farwellii</i>	Farwell's Water Milfoil				S2	12	20.3 ± 1.0	NS
P	<i>Myriophyllum verticillatum</i>	Whorled Water Milfoil				S2	15	40.4 ± 1.0	NS
P	<i>Oenothera fruticosa</i> ssp. <i>tetragona</i>	Narrow-leaved Evening Primrose				S2	6	40.3 ± 7.0	NS
P	<i>Persicaria arifolia</i>	Halberd-leaved Tearthumb				S2	114	19.3 ± 0.0	NS
P	<i>Rumex triangulivalvis</i>	Triangular-valve Dock				S2	13	14.7 ± 0.0	NS
P	<i>Primula mistassinica</i>	Mistassini Primrose				S2	16	40.3 ± 7.0	NS
P	<i>Anemonastrum canadense</i>	Canada Anemone				S2	4	44.7 ± 0.0	NS
P	<i>Anemone quinquefolia</i>	Wood Anemone				S2	30	17.9 ± 0.0	NS
P	<i>Anemone virginiana</i>	Virginia Anemone				S2	17	39.4 ± 7.0	NS
P	<i>Anemone virginiana</i> var. <i>virginiana</i>	Virginia Anemone				S2	2	46.3 ± 7.0	NS
P	<i>Caltha palustris</i>	Yellow Marsh Marigold				S2	67	63.5 ± 1.0	NB
P	<i>Galium boreale</i>	Northern Bedstraw				S2	11	6.3 ± 5.0	NS
P	<i>Galium labradoricum</i>	Labrador Bedstraw				S2	85	65.2 ± 0.0	NB
P	<i>Salix pedicularis</i>	Bog Willow				S2	75	46.5 ± 0.0	NS

Taxonomic Group	Scientific Name	Common Name	COSEWIC	SARA	Prov Legal Prot	Prov Rarity Rank	# recs	Distance (km)	Prov
P	<i>Salix sericea</i>	Silky Willow				S2	8	72.3 ± 1.0	NS
P	<i>Comandra umbellata</i>	Bastard's Toadflax				S2	7	73.3 ± 1.0	NB
P	<i>Saxifraga paniculata</i> ssp. <i>laestadii</i>	Laestadius' Saxifrage				S2	23	53.5 ± 1.0	NS
P	<i>Tiarella cordifolia</i>	Heart-leaved Foamflower				S2	248	41.3 ± 1.0	NS
P	<i>Viola nephrophylla</i>	Northern Bog Violet				S2	11	24.7 ± 0.0	NS
P	<i>Carex bebbii</i>	Bebb's Sedge				S2	38	21.3 ± 0.0	NS
P	<i>Carex capillaris</i>	Hairlike Sedge				S2	10	30.3 ± 0.0	NS
P	<i>Carex castanea</i>	Chestnut Sedge				S2	26	47.5 ± 0.0	NS
P	<i>Carex comosa</i>	Bearded Sedge				S2	12	26.8 ± 7.0	NS
P	<i>Carex hystericina</i>	Porcupine Sedge				S2	9	19.6 ± 1.0	NS
P	<i>Carex tenera</i>	Tender Sedge				S2	11	6.6 ± 0.0	NS
P	<i>Carex tuckermanii</i>	Tuckerman's Sedge				S2	48	18.4 ± 0.0	NS
P	<i>Carex atratifomis</i>	Scabrous Black Sedge				S2	3	40.9 ± 1.0	NS
P	<i>Vallisneria americana</i>	Wild Celery				S2	6	32.8 ± 0.0	NS
P	<i>Juncus stygius</i> ssp. <i>americanus</i>	Moor Rush				S2	13	50.0 ± 0.0	NS
P	<i>Allium schoenoprasum</i>	Wild Chives				S2	10	27.8 ± 0.0	NS
P	<i>Allium schoenoprasum</i> var. <i>sibiricum</i>	Wild Chives				S2	1	40.3 ± 7.0	NS
P	<i>Lilium canadense</i>	Canada Lily				S2	117	18.3 ± 1.0	NS
P	<i>Najas gracillima</i>	Thread-Like Naiad				S2	2	70.8 ± 0.0	NS
P	<i>Cypripedium parviflorum</i> var. <i>pubescens</i>	Yellow Lady's-slipper				S2	24	39.8 ± 0.0	NS
P	<i>Cypripedium parviflorum</i> var. <i>makasin</i>	Small Yellow Lady's-Slipper				S2	13	67.3 ± 0.0	NS
P	<i>Cypripedium reginae</i>	Showy Lady's-Slipper				S2	60	5.5 ± 7.0	NS
P	<i>Goodyera pubescens</i>	Downy Rattlesnake-Plantain				S2	12	53.7 ± 0.0	NS
P	<i>Platanthera flava</i> var. <i>flava</i>	Southern Rein Orchid				S2	1	68.2 ± 7.0	NS
P	<i>Platanthera flava</i> var. <i>herbiola</i>	Pale Green Orchid				S2	11	54.4 ± 1.0	NS
P	<i>Platanthera macrophylla</i>	Large Round-Leaved Orchid				S2	15	16.1 ± 1.0	NS
P	<i>Spiranthes lucida</i>	Shining Ladies'-Tresses				S2	28	50.3 ± 0.0	NS
P	<i>Calamagrostis stricta</i>	Slim-stemmed Reed Grass				S2	9	49.2 ± 0.0	NS
P	<i>Dichanthelium linearifolium</i>	Narrow-leaved Panic Grass				S2	7	50.6 ± 0.0	NS
P	<i>Piptatheropsis canadensis</i>	Canada Ricegrass				S2	8	29.5 ± 1.0	NS
P	<i>Piptatheropsis pungens</i>	Slender Ricegrass				S2	3	96.6 ± 1.0	NB
P	<i>Potamogeton friesii</i>	Fries' Pondweed				S2	19	46.0 ± 5.0	NS
P	<i>Potamogeton richardsonii</i>	Richardson's Pondweed				S2	9	44.5 ± 0.0	NS
P	<i>Dryopteris fragrans</i>	Fragrant Wood Fern				S2	39	14.5 ± 1.0	NS
P	<i>Woodsia glabella</i>	Smooth Cliff Fern				S2	10	13.8 ± 1.0	NS
P	<i>Symphotrichum boreale</i>	Boreal Aster				S2?	9	5.5 ± 7.0	NS
P	<i>Cuscuta cephalanthi</i>	Buttonbush Dodder				S2?	4	79.7 ± 1.0	NS
P	<i>Epilobium coloratum</i>	Purple-veined Willowherb				S2?	19	15.3 ± 0.0	NS
P	<i>Rumex persicarioides</i>	Peach-leaved Dock				S2?	2	87.6 ± 5.0	PE
P	<i>Crataegus submollis</i>	Quebec Hawthorn				S2?	5	12.1 ± 7.0	NS
P	<i>Carex peckii</i>	White-Tinged Sedge				S2?	5	39.9 ± 0.0	NS
P	<i>Eleocharis ovata</i>	Ovate Spikerush				S2?	16	17.4 ± 0.0	NS
P	<i>Scirpus pedicellatus</i>	Stalked Bulrush				S2?	7	63.0 ± 1.0	NS
P	<i>Potamogeton pulcher</i>	Spotted Pondweed			Vulnerable	S2S3	3	79.4 ± 2.0	NS
P	<i>Hieracium robinsonii</i>	Robinson's Hawkweed				S2S3	9	45.2 ± 1.0	NS
P	<i>Iva frutescens</i>	Big-leaved Marsh-elder				S2S3	31	60.1 ± 0.0	NS
P	<i>Senecio pseudoarnica</i>	Seabeach Ragwort				S2S3	1	40.3 ± 7.0	NS
P	<i>Betula michauxii</i>	Michaux's Dwarf Birch				S2S3	25	71.6 ± 0.0	NS
P	<i>Ceratophyllum echinatum</i>	Prickly Hornwort				S2S3	32	21.1 ± 0.0	NS
P	<i>Hypericum x dissimulatum</i>	Disguised St. John's-wort				S2S3	4	5.4 ± 1.0	NS
P	<i>Triosteum aurantiacum</i>	Orange-fruited Tinker's Weed				S2S3	57	42.1 ± 0.0	NS

Taxonomic Group	Scientific Name	Common Name	COSEWIC	SARA	Prov Legal Prot	Prov Rarity Rank	# recs	Distance (km)	Prov
P	<i>Shepherdia canadensis</i>	Soapberry				S2S3	137	63.8 ± 0.0	NS
P	<i>Euphorbia polygonifolia</i>	Seaside Spurge				S2S3	3	56.5 ± 0.0	NB
P	<i>Hedeoma pulegioides</i>	American False Pennyroyal				S2S3	18	23.8 ± 1.0	NS
P	<i>Polygonum aviculare</i> ssp. <i>buxiforme</i>	Box Knotweed				S2S3	7	18.7 ± 0.0	NS
P	<i>Polygonum oxyspermum</i>	Sharp-fruit Knotweed				S2S3	1	88.7 ± 0.0	NS
P	<i>Amelanchier fernaldii</i>	Fernald's Serviceberry				S2S3	2	30.4 ± 5.0	NS
P	<i>Potentilla canadensis</i>	Canada Cinquefoil				S2S3	5	41.6 ± 5.0	NS
P	<i>Galium aparine</i>	Common Bedstraw				S2S3	14	42.5 ± 3.0	NS
P	<i>Galium obtusum</i>	Blunt-leaved Bedstraw				S2S3	1	65.9 ± 1.0	NB
P	<i>Salix pellita</i>	Satiny Willow				S2S3	9	20.9 ± 0.0	NS
P	<i>Carex adusta</i>	Lesser Brown Sedge				S2S3	9	17.2 ± 0.0	NS
P	<i>Carex hirtifolia</i>	Pubescent Sedge				S2S3	53	15.1 ± 0.0	NS
P	<i>Carex houghtoniana</i>	Houghton's Sedge				S2S3	8	19.9 ± 0.0	NS
P	<i>Eleocharis flavescens</i> var. <i>olivacea</i>	Bright-green Spikerush				S2S3	5	54.8 ± 0.0	NS
P	<i>Eriophorum gracile</i>	Slender Cottongrass				S2S3	53	13.8 ± 1.0	NS
P	<i>Coeloglossum viride</i>	Long-bracted Frog Orchid				S2S3	16	10.9 ± 0.0	NS
P	<i>Cypripedium parviflorum</i>	Yellow Lady's-slipper				S2S3	538	33.7 ± 13.0	NS
P	<i>Poa glauca</i>	Glaucous Blue Grass				S2S3	14	30.3 ± 0.0	NS
P	<i>Botrychium lanceolatum</i> ssp. <i>angustisegmentum</i>	Narrow Triangle Moonwort				S2S3	21	17.8 ± 0.0	NS
P	<i>Botrychium simplex</i>	Least Moonwort				S2S3	5	17.8 ± 0.0	NS
P	<i>Ophioglossum pusillum</i>	Northern Adder's-tongue				S2S3	7	45.5 ± 50.0	NS
P	<i>Angelica atropurpurea</i>	Purple-stemmed Angelica				S3	30	37.8 ± 2.0	NS
P	<i>Erigeron hyssopifolius</i>	Hyssop-leaved Fleabane				S3	51	18.2 ± 0.0	NS
P	<i>Hieracium paniculatum</i>	Panicled Hawkweed				S3	19	52.7 ± 0.0	NS
P	<i>Bidens beckii</i>	Water Beggarticks				S3	28	26.5 ± 1.0	NS
P	<i>Packera paupercula</i> var. <i>paupercula</i>	Balsam Groundsel				S3	1	69.2 ± 0.0	NS
P	<i>Packera paupercula</i>	Balsam Groundsel				S3	71	39.9 ± 5.0	NS
P	<i>Betula pumila</i> var. <i>pumila</i>	Bog Birch				S3	1	46.1 ± 1.0	NS
P	<i>Betula pumila</i>	Bog Birch				S3	11	77.7 ± 0.0	NS
P	<i>Campanula aparinoides</i>	Marsh Bellflower				S3	43	16.4 ± 5.0	NS
P	<i>Mononeuria groenlandica</i>	Greenland Stitchwort				S3	11	85.2 ± 0.0	NS
P	<i>Viburnum edule</i>	Squashberry				S3	4	61.9 ± 0.0	NS
P	<i>Empetrum eamesii</i>	Pink Crowberry				S3	1	78.7 ± 5.0	PE
P	<i>Vaccinium boreale</i>	Northern Blueberry				S3	4	31.6 ± 1.0	NS
P	<i>Vaccinium cespitosum</i>	dwarf bilberry				S3	79	50.7 ± 0.0	NS
P	<i>Bartonia virginica</i>	Yellow Bartonia				S3	1	72.3 ± 7.0	NS
P	<i>Geranium bicknellii</i>	Bicknell's Crane's-bill				S3	14	20.5 ± 0.0	NS
P	<i>Proserpinaca palustris</i>	Marsh Mermaidweed				S3	56	27.1 ± 1.0	NS
P	<i>Proserpinaca pectinata</i>	Comb-leaved Mermaidweed				S3	5	45.1 ± 5.0	NS
P	<i>Teucrium canadense</i>	Canada Germander				S3	16	51.1 ± 0.0	NS
P	<i>Epilobium strictum</i>	Downy Willowherb				S3	27	44.0 ± 5.0	NS
P	<i>Polygala sanguinea</i>	Blood Milkwort				S3	26	3.4 ± 5.0	NS
P	<i>Persicaria pensylvanica</i>	Pennsylvania Smartweed				S3	37	17.5 ± 0.0	NS
P	<i>Fallopia scandens</i>	Climbing False Buckwheat				S3	33	18.0 ± 0.0	NS
P	<i>Plantago rugelii</i>	Rugel's Plantain				S3	9	19.0 ± 0.0	NS
P	<i>Primula laurentiana</i>	Laurentian Primrose				S3	35	59.6 ± 0.0	NS
P	<i>Samolus parviflorus</i>	Seaside Brookweed				S3	17	22.5 ± 0.0	NS
P	<i>Pyrola asarifolia</i>	Pink Pyrola				S3	16	19.6 ± 0.0	NS
P	<i>Pyrola minor</i>	Lesser Pyrola				S3	5	50.6 ± 0.0	NS
P	<i>Ranunculus gmelinii</i>	Gmelin's Water Buttercup				S3	98	38.0 ± 5.0	NS
P	<i>Endotropis alnifolia</i>	alder-leaved buckthorn				S3	314	18.6 ± 0.0	NS
P	<i>Agrimonia gryposepala</i>	Hooked Agrimony				S3	173	18.1 ± 0.0	NS
P	<i>Amelanchier spicata</i>	Running Serviceberry				S3	20	18.3 ± 5.0	NS
P	<i>Geocaulon lividum</i>	Northern Comandra				S3	10	20.0 ± 0.0	NS

Taxonomic Group	Scientific Name	Common Name	COSEWIC	SARA	Prov Legal Prot	Prov Rarity Rank	# recs	Distance (km)	Prov
P	<i>Limosella australis</i>	Southern Mudwort				S3	18	20.6 ± 1.0	NS
P	<i>Lindernia dubia</i>	Yellow-seeded False Pimperel				S3	46	15.4 ± 0.0	NS
P	<i>Laportea canadensis</i>	Canada Wood Nettle				S3	58	17.4 ± 0.0	NS
P	<i>Verbena hastata</i>	Blue Vervain				S3	214	14.6 ± 0.0	NS
P	<i>Carex cryptolepis</i>	Hidden-scaled Sedge				S3	21	18.4 ± 0.0	NS
P	<i>Carex eburnea</i>	Bristle-leaved Sedge				S3	11	39.9 ± 0.0	NS
P	<i>Carex lupulina</i>	Hop Sedge				S3	45	31.2 ± 10.0	NS
P	<i>Carex rosea</i>	Rosy Sedge				S3	41	18.2 ± 0.0	NS
P	<i>Carex swanii</i>	Swan's Sedge				S3	2	90.4 ± 0.0	NS
P	<i>Carex tribuloides</i>	Blunt Broom Sedge				S3	19	33.2 ± 0.0	NS
P	<i>Carex wiegandii</i>	Wiegand's Sedge				S3	33	42.4 ± 0.0	NS
P	<i>Carex foenea</i>	Fernald's Hay Sedge				S3	29	19.5 ± 5.0	NS
P	<i>Eleocharis nitida</i>	Quill Spikerush				S3	16	18.8 ± 7.0	NS
P	<i>Elodea canadensis</i>	Canada Waterweed				S3	29	20.5 ± 0.0	NS
P	<i>Juncus subcaudatus</i>	Woods-Rush				S3	22	25.3 ± 5.0	NS
P	<i>Juncus dudleyi</i>	Dudley's Rush				S3	43	23.2 ± 0.0	NS
P	<i>Goodyera repens</i>	Lesser Rattlesnake-plantain				S3	22	26.9 ± 100.0	NS
P	<i>Neottia bifolia</i>	Southern Twayblade				S3	97	38.5 ± 0.0	NS
P	<i>Platanthera grandiflora</i>	Large Purple Fringed Orchid				S3	121	8.4 ± 1.0	NS
P	<i>Platanthera hookeri</i>	Hooker's Orchid				S3	31	20.3 ± 0.0	NS
P	<i>Platanthera orbiculata</i>	Small Round-leaved Orchid				S3	40	4.6 ± 7.0	NS
P	<i>Spiranthes ochroleuca</i>	Yellow Ladies'-tresses				S3	25	6.6 ± 0.0	NS
P	<i>Alopecurus aequalis</i>	Short-awned Foxtail				S3	29	16.5 ± 0.0	NS
P	<i>Dichanthelium clandestinum</i>	Deer-tongue Panic Grass				S3	100	47.9 ± 0.0	NS
P	<i>Potamogeton obtusifolius</i>	Blunt-leaved Pondweed				S3	27	18.5 ± 0.0	NS
P	<i>Potamogeton praelongus</i>	White-stemmed Pondweed				S3	16	18.5 ± 0.0	NS
P	<i>Potamogeton zosteriformis</i>	Flat-stemmed Pondweed				S3	26	44.3 ± 0.0	NS
P	<i>Sparganium natans</i>	Small Burreed				S3	25	21.2 ± 0.0	NS
P	<i>Asplenium trichomanes</i>	Maidenhair Spleenwort				S3	20	44.5 ± 1.0	NS
P	<i>Asplenium viride</i>	Green Spleenwort				S3	12	4.6 ± 7.0	NS
P	<i>Equisetum pratense</i>	Meadow Horsetail				S3	17	18.9 ± 0.0	NS
P	<i>Equisetum variegatum</i>	Variiegated Horsetail				S3	77	30.5 ± 0.0	NS
P	<i>Isoetes tuckermanii</i> ssp. <i>acadiensis</i>	Acadian Quillwort				S3	5	17.0 ± 1.0	NS
P	<i>Diphasiastrum sitchense</i>	Sitka Ground-cedar				S3	6	43.2 ± 5.0	NS
P	<i>Huperzia appressa</i>	Mountain Firmoss				S3	19	12.9 ± 1.0	NS
P	<i>Sceptridium dissectum</i>	Dissected Moonwort				S3	9	18.0 ± 0.0	NS
P	<i>Polypodium appalachianum</i>	Appalachian Polypody				S3	36	6.1 ± 0.0	NS
P	<i>Bidens vulgata</i>	Tall Beggarticks				S3?	5	43.4 ± 0.0	NS
P	<i>Persicaria amphibia</i> var. <i>emersa</i>	Long-root Smartweed				S3?	2	67.6 ± 0.0	NS
P	<i>Diphasiastrum x sabinifolium</i>	Savin-leaved Ground-cedar				S3?	16	14.2 ± 0.0	NS
P	<i>Atriplex glabriuscula</i> var. <i>franktonii</i>	Frankton's Saltbush				S3S4	19	37.5 ± 5.0	NS
P	<i>Suaeda calceoliformis</i>	Horned Sea-blite				S3S4	19	25.9 ± 0.0	NS
P	<i>Vaccinium corymbosum</i>	Highbush Blueberry				S3S4	2	45.3 ± 0.0	NS
P	<i>Myriophyllum sibiricum</i>	Siberian Water Milfoil				S3S4	9	45.5 ± 0.0	NS
P	<i>Nuphar microphylla</i>	Small Yellow Pond-lily				S3S4	7	18.8 ± 1.0	NS
P	<i>Sanguinaria canadensis</i>	Bloodroot				S3S4	146	15.7 ± 0.0	NS
P	<i>Polygonum fowleri</i>	Fowler's Knotweed				S3S4	11	18.8 ± 1.0	NS
P	<i>Rumex fueginus</i>	Tierra del Fuego Dock				S3S4	63	46.2 ± 2.0	NS
P	<i>Crataegus succulenta</i>	Fleshy Hawthorn				S3S4	4	91.5 ± 0.0	NS
P	<i>Fragaria vesca</i> ssp. <i>americana</i>	Woodland Strawberry				S3S4	82	31.0 ± 0.0	NS
P	<i>Fragaria vesca</i>	Woodland Strawberry				S3S4	2	28.4 ± 0.0	NS
P	<i>Salix petiolaris</i>	Meadow Willow				S3S4	84	21.0 ± 0.0	NS
P	<i>Agalinis neoscotica</i>	Nova Scotia Agalinis				S3S4	16	40.6 ± 0.0	NS

Taxonomic Group	Scientific Name	Common Name	COSEWIC	SARA	Prov Legal Prot	Prov Rarity Rank	# recs	Distance (km)	Prov
P	<i>Viola sagittata</i> var. <i>ovata</i>	Arrow-Leaved Violet				S3S4	13	53.4 ± 2.0	NS
P	<i>Symplocarpus foetidus</i>	Eastern Skunk Cabbage				S3S4	122	46.9 ± 0.0	NS
P	<i>Carex argyrantha</i>	Silvery-flowered Sedge				S3S4	8	53.4 ± 2.0	NS
P	<i>Eriophorum russeolum</i>	Russet Cottongrass				S3S4	194	45.1 ± 0.0	NS
P	<i>Triglochin gaspensis</i>	Gasp ← Arrowgrass				S3S4	6	57.5 ± 1.0	NB
P	<i>Juncus acuminatus</i>	Sharp-Fruit Rush				S3S4	7	20.8 ± 2.0	NS
P	<i>Luzula parviflora</i>	Small-flowered Woodrush				S3S4	9	19.5 ± 0.0	NS
P	<i>Liparis loeselii</i>	Loesel's Twayblade				S3S4	22	17.2 ± 1.0	NS
P	<i>Panicum philadelphicum</i>	Philadelphia Panicgrass				S3S4	16	17.1 ± 0.0	NS
P	<i>Trisetum spicatum</i>	Narrow False Oats				S3S4	33	47.9 ± 0.0	NS
P	<i>Cystopteris bulbifera</i>	Bulblet Bladder Fern				S3S4	108	30.4 ± 1.0	NS
P	<i>Equisetum hyemale</i> ssp. <i>affine</i>	Common Scouring-rush				S3S4	108	25.4 ± 0.0	NS
P	<i>Equisetum scirpoides</i>	Dwarf Scouring-Rush				S3S4	87	17.7 ± 0.0	NS
P	<i>Diphasiastrum complanatum</i>	Northern Ground-cedar				S3S4	23	17.3 ± 0.0	NS
P	<i>Schizaea pusilla</i>	Little Curlygrass Fern				S3S4	6	92.8 ± 0.0	NS
P	<i>Viola canadensis</i>	Canada Violet				SH	2	49.2 ± 7.0	NS

5.1 SOURCE BIBLIOGRAPHY (100 km)

The recipient of these data shall acknowledge the AC CDC and the data sources listed below in any documents, reports, publications or presentations, in which this dataset makes a significant contribution.

# recs	CITATION
14972	Morrison, Guy. 2011. Maritime Shorebird Survey (MSS) database. Canadian Wildlife Service, Ottawa, 15939 surveys. 86171 recs.
14525	Lepage, D. 2014. Maritime Breeding Bird Atlas Database. Bird Studies Canada, Sackville NB, 407,838 recs.
5915	Erskine, A.J. 1992. Maritime Breeding Bird Atlas Database. NS Museum & Nimbus Publ., Halifax, 82,125 recs.
3110	eBird. 2014. eBird Basic Dataset. Version: EBD_relNov-2014. Ithaca, New York. Nov 2014. Cornell Lab of Ornithology, 25036 recs.
2678	iNaturalist. 2020. iNaturalist Data Export 2020. iNaturalist.org and iNaturalist.ca, Web site: 128728 recs.
2541	Berrigan, L. 2019. Maritimes Marsh Monitoring Project 2013, 2014, 2016, 2017, and 2018 data. Bird Studies Canada, Sackville, NB.
2359	Paquet, Julie. 2018. Atlantic Canada Shorebird Survey (ACSS) database 2012-2018. Environment Canada, Canadian Wildlife Service.
1646	eBird. 2020. eBird Basic Dataset. Version: EBD_relNov-2019. Ithaca, New York. Nov 2019, Cape Breton Bras d'Or Lakes Watershed subset. Cornell Lab of Ornithology.
1060	Patrick, A.; Horne, D.; Noseworthy, J. et. al. 2017. Field data for Nova Scotia and New Brunswick, 2015 and 2017. Nature Conservancy of Canada.
961	Blaney, C.S.; Mazerolle, D.M.; Belliveau, A.B. 2015. Atlantic Canada Conservation Data Centre Fieldwork 2015. Atlantic Canada Conservation Data Centre, # recs.
744	Pardieck, K.L. & Ziolkowski Jr., D.J.; Hudson, M.-A.R. 2014. North American Breeding Bird Survey Dataset 1966 - 2013, version 2013.0. U.S. Geological Survey, Patuxent Wildlife Research Center <www.pwrc.usgs.gov/BBS/RawData/>.
623	Cameron, E. 2008. Canadian Gypsum Co. survey 2007-08. Conestoga-Rovers & Assoc., 623 recs.
621	Eaton, S. 2014. Nova Scotia Wood Turtle Database. Environment and Climate Change Canada, 4843 recs.
507	Tranquilla, L. 2015. Maritimes Marsh Monitoring Project 2015 data. Bird Studies Canada, Sackville NB, 5062 recs.
481	Blaney, C.S.; Mazerolle, D.M. 2010. Fieldwork 2010. Atlantic Canada Conservation Data Centre. Sackville NB, 15508 recs.
459	Klymko, J. 2018. Maritimes Butterfly Atlas database. Atlantic Canada Conservation Data Centre.
444	Newell, R.E. 2000. E.C. Smith Herbarium Database. Acadia University, Wolfville NS, 7139 recs.
426	Blaney, C.S.; Mazerolle, D.M. 2012. Fieldwork 2012. Atlantic Canada Conservation Data Centre, 13,278 recs.
408	Benjamin, L.K. (compiler). 2007. Significant Habitat & Species Database. Nova Scotia Dept Natural Resources, 8439 recs.
404	Newell, R.E. 2005. E.C. Smith Digital Herbarium. E.C. Smith Herbarium, Irving Biodiversity Collection, Acadia University, Web site: http://luxor.acadiau.ca/library/Herbarium/project/ . 582 recs.
312	Belliveau, A.G. 2018. Atlantic Canada Conservation Data Centre Fieldwork 2017. Atlantic Canada Conservation Data Centre.
298	Blaney, C.S & Spicer, C.D.; Popma, T.M.; Basquill, S.P. 2003. Vascular Plant Surveys of Northumberland Strait Rivers & Amherst Area Peatlands. Nova Scotia Museum Research Grant, 501 recs.
294	Scott, F.W. 2002. Nova Scotia Herpetofauna Atlas Database. Acadia University, Wolfville NS, 8856 recs.
292	Churchill, J.L. 2018. Atlantic Canada Conservation Data Centre Fieldwork 2018. Atlantic Canada Conservation Data Centre, 907 recs.
288	Blaney, C.S.; Mazerolle, D.M.; Belliveau, A.B. 2014. Atlantic Canada Conservation Data Centre Fieldwork 2014. Atlantic Canada Conservation Data Centre, # recs.
271	Blaney, C.S. & Mazerolle, D.M. 2011. Field data from NCC properties at Musquash Harbour NB & Goose Lake NS. Atlantic Canada Conservation Data Centre, 1739 recs.
269	Chapman, C.J. 2019. Atlantic Canada Conservation Data Centre 2019 botanical fieldwork. Atlantic Canada Conservation Data Centre, 11729 recs.
258	Neily, T.H. & Pepper, C.; Toms, B. 2018. Nova Scotia lichen database [as of 2018-03]. Mersey Tobeatic Research Institute.
253	Churchill, J.L.; Klymko, J.D. 2015. Chignecto and Tintamarre National Wildlife Area Bird Surveys 2015. Atlantic Canada Conservation Data Centre, 2238 recs.
250	Brazner, J. 2016. Nova Scotia Forested Wetland Bird Surveys. Nova Scotia Department of Lands and Forestry.
242	Pronych, G. & Wilson, A. 1993. Atlas of Rare Vascular Plants in Nova Scotia. Nova Scotia Museum, Halifax NS, I:1-168, II:169-331. 1446 recs.

# recs	CITATION
225	Amirault, D.L. & Stewart, J. 2007. Piping Plover Database 1894-2006. Canadian Wildlife Service, Sackville, 3344 recs, 1228 new.
222	Benjamin, L.K. (compiler). 2012. Significant Habitat & Species Database. Nova Scotia Dept Natural Resources, 4965 recs.
209	LaPaix, R.W.; Crowell, M.J.; MacDonald, M. 2011. Stantec rare plant records, 2010-11. Stantec Consulting, 334 recs.
192	Blaney, C.S. 2016. Atlantic Canada Conservation Data Centre Fieldwork 2016. Atlantic Canada Conservation Data Centre, 6719 recs.
178	Bryson, I. 2013. Nova Scotia rare plant records. CBCL Ltd., 180 records.
169	Mazerolle, D.M. 2016. Atlantic Canada Conservation Data Centre Fieldwork 2017. Atlantic Canada Conservation Data Centre.
165	Toms, B. 2018. Bat Species data from www.batconservation.ca for Nova Scotia. Mersey Tobeatic Research Institute, 547 Records.
162	Island Nature Trust. 2016. Farmland birds project. Mader, Shannon (ed.) .
161	MacDonald, M. 2008. PEI Power Corridor Floral Surveys, 2004-08. Jacques Whitford Ltd, 2238 recs (979 rare).
159	Churchill, J.L.; Walker, J. 2017. Species at Risk Surveys at Correctional Services Canada Properties in Nova Scotia and New Brunswick. Atlantic Canada Conservation Data Centre.
156	Brunelle, P.-M. (compiler). 2009. ADIP/MDDS Odonata Database: data to 2006 inclusive. Atlantic Dragonfly Inventory Program (ADIP), 24200 recs.
155	e-Butterfly. 2016. Export of Maritimes records and photos. Maxim Larrivee, Sambo Zhang (ed.) e-butterfly.org.
155	Munro, Marian K. Nova Scotia Provincial Museum of Natural History Herbarium Database. Nova Scotia Provincial Museum of Natural History, Halifax, Nova Scotia. 2013.
153	Bryson, I.C. 2020. Nova Scotia flora and lichen observations 2020. Nova Scotia Environment, 139 recs.
133	Munro, Marian K. Tracked lichen specimens, Nova Scotia Provincial Museum of Natural History Herbarium. Atlantic Canada Conservation Data Centre. 2019.
132	LaPaix, R.W.; Crowell, M.J.; MacDonald, M.; Neily, T.D.; Quinn, G. 2017. Stantec Nova Scotia rare plant records, 2012-2016. Stantec Consulting.
131	Manthorne, A. 2014. MaritimesSwiftwatch Project database 2013-2014. Bird Studies Canada, Sackville NB, 326 recs.
129	Blaney, C.S. 2017. Atlantic Canada Conservation Data Centre Fieldwork 2017. Atlantic Canada Conservation Data Centre.
129	Phinney, Lori. 2020. Pre- and post White-nose Syndrome bat acoustic monitoring, NS. Mersey Tobeatic Research Institute, 1279 recs.
126	Belland, R.J. Maritimes moss records from various herbarium databases. 2014.
126	Chapman, C.J. 2018. Atlantic Canada Conservation Data Centre botanical fieldwork 2018. Atlantic Canada Conservation Data Centre, 11171 recs.
119	Belliveau, A.G. 2016. Atlantic Canada Conservation Data Centre botanical fieldwork 2016. Atlantic Canada Conservation Data Centre, 10695 recs.
119	Blaney, C.S. 2018. Atlantic Canada Conservation Data Centre Fieldwork 2018. Atlantic Canada Conservation Data Centre.
119	Staicer, C. & Bliss, S.; Achenbach, L. 2017. Occurrences of tracked breeding birds in forested wetlands. , 303 records.
116	Pepper, C. 2013. 2013 rare bird and plant observations in Nova Scotia. , 181 records.
112	McAlpine, D.F. 1998. NBM Science Collections databases to 1998. New Brunswick Museum, Saint John NB, 241 recs.
110	Blaney, C.S.; Mazerolle, D.M.; Belliveau, A.B. 2013. Atlantic Canada Conservation Data Centre Fieldwork 2013. Atlantic Canada Conservation Data Centre, 9000+ recs.
109	Blaney, C.S. 2000. Fieldwork 2000. Atlantic Canada Conservation Data Centre. Sackville NB, 1265 recs.
109	iNaturalist. 2018. iNaturalist Data Export 2018. iNaturalist.org and iNaturalist.ca, Web site: 11700 recs.
105	e-Butterfly. 2019. Export of Maritimes records and photos. McFarland, K. (ed.) e-butterfly.org.
104	NatureServe Canada. 2019. iNaturalist Maritimes Butterfly Records. iNaturalist.org and iNaturalist.ca.
103	Hicks, Andrew. 2009. Coastal Waterfowl Surveys Database, 2000-08. Canadian Wildlife Service, Sackville, 46488 recs (11149 non-zero).
103	Stewart, J.I. 2010. Peregrine Falcon Surveys in New Brunswick, 2002-09. Canadian Wildlife Service, Sackville, 58 recs.
101	Wilhelm, S.I. et al. 2011. Colonial Waterbird Database. Canadian Wildlife Service, Sackville, 2698 sites, 9718 recs (8192 obs).
100	Tims, J. & Craig, N. 1995. Environmentally Significant Areas in New Brunswick (NBESA). NB Dept of Environment & Nature Trust of New Brunswick Inc, 6042 recs. https://doi.org/10.1037/arc0000014 .
98	Benedict, B. Connell Herbarium Specimens. University New Brunswick, Fredericton. 2003.
88	Nussey, Pat & NCC staff. 2019. AEI tracked species records, 2016-2019. Chapman, C.J. (ed.) Atlantic Canada Conservation Data Centre, 333.
87	McNeil, J.A. 2018. Wood Turtle records, 2018. Mersey Tobeatic Research Institute, 68 recs.
86	Walker, J. 2017. Bird inventories at French River, NS, and Memramcook, NB, for Nature Conservancy of Canada. Pers. comm. to AC CDC.
79	Mazerolle, D.M. 2018. Atlantic Canada Conservation Data Centre botanical fieldwork 2018. Atlantic Canada Conservation Data Centre, 13515 recs.
78	Zinck, M. & Roland, A.E. 1998. Roland's Flora of Nova Scotia. Nova Scotia Museum, 3rd ed., rev. M. Zinck; 2 Vol., 1297 pp.
75	Belliveau, A.G. 2018. E.C. Smith Herbarium and Atlantic Canada Conservation Data Centre Fieldwork 2018. E.C. Smith Herbarium, 6226 recs.
73	Belliveau, A.G. 2014. Plant Records from Southern and Central Nova Scotia. Atlantic Canada Conservation Data Centre, 919 recs.
73	Layberry, R.A. & Hall, P.W., LaFontaine, J.D. 1998. The Butterflies of Canada. University of Toronto Press. 280 pp+plates.
71	Klymko, J. 2016. Atlantic Canada Conservation Data Centre Fieldwork 2016. Atlantic Canada Conservation Data Centre.
69	Neily, T.H. & Pepper, C.; Toms, B. 2013. Nova Scotia lichen location database. Mersey Tobeatic Research Institute, 1301 records.
68	Hall, R.A. 2003. NS Freshwater Mussel Fieldwork. Nova Scotia Dept Natural Resources, 189 recs.
68	Roland, A.E. & Smith, E.C. 1969. The Flora of Nova Scotia, 1st Ed. Nova Scotia Museum, Halifax, 743pp.
67	Parks Canada. 2010. Specimens in or near National Parks in Atlantic Canada. Canadian National Museum, 3925 recs.
66	Blaney, C.S.; Mazerolle, D.M.; Oberndorfer, E. 2007. Fieldwork 2007. Atlantic Canada Conservation Data Centre. Sackville NB, 13770 recs.
64	Hall, R.A. 2001. S. NS Freshwater Mussel Fieldwork. Nova Scotia Dept Natural Resources, 178 recs.
61	Cameron, R.P. 2009. Cyanolichen database. Nova Scotia Environment & Labour, 1724 recs.
61	Catling, P.M., Erskine, D.S. & MacLaren, R.B. 1985. The Plants of Prince Edward Island with new records, nomenclatural changes & corrections & deletions, 1st Ed. Research Branch, Agriculture Canada, Ottawa, Publication 1798. 22pp.
59	Spicer, C.D. & Harries, H. 2001. Mount Allison Herbarium Specimens. Mount Allison University, 128 recs.
58	Blaney, C.S.; Mazerolle, D.M.; Klymko, J.; Spicer, C.D. 2006. Fieldwork 2006. Atlantic Canada Conservation Data Centre. Sackville NB, 8399 recs.
58	Blaney, C.S.; Spicer, C.D.; Mazerolle, D.M. 2005. Fieldwork 2005. Atlantic Canada Conservation Data Centre. Sackville NB, 2333 recs.
56	Blaney, C.S.; Spicer, C.D.; Popma, T.M.; Hanel, C. 2002. Fieldwork 2002. Atlantic Canada Conservation Data Centre. Sackville NB, 2252 recs.
54	Burns, L. 2013. Personal communication concerning bat occurrence on PEI. Winter 2013. Pers. comm.

# recs	CITATION
53	Blaney, C.S.; Spicer, C.D.; Rothfels, C. 2004. Fieldwork 2004. Atlantic Canada Conservation Data Centre. Sackville NB, 1343 recs.
51	Blaney, C.S. 2003. Fieldwork 2003. Atlantic Canada Conservation Data Centre. Sackville NB, 1042 recs.
50	Blaney, C.S.; Mazerolle, D.M. 2008. Fieldwork 2008. Atlantic Canada Conservation Data Centre. Sackville NB, 13343 recs.
50	Ogden, J. NS DNR Butterfly Collection Dataset. Nova Scotia Department of Natural Resources. 2014.
49	Blaney, C.S.; Spicer, C.D. 2001. Fieldwork 2001. Atlantic Canada Conservation Data Centre. Sackville NB, 981 recs.
48	Clayden, S.R. 1998. NBM Science Collections databases: vascular plants. New Brunswick Museum, Saint John NB, 19759 recs.
45	Wallace, S. 2020. Stewardship Department species occurrence data on NTNB preserves. Nature Trust of New Brunswick.
43	Godbout, V. 2002. SAR Inventory: Birds in Fort Beauséjour NHS. Parks Canada, Atlantic, SARINV02-01. 202 recs.
42	Cameron, R.P. 2011. Lichen observations, 2011. Nova Scotia Environment & Labour, 731 recs.
41	Blaney, C.S.; Mazerolle, D.M. 2011. Fieldwork 2011. Atlantic Canada Conservation Data Centre. Sackville NB.
40	Cameron, E. 2007. Canadian Gypsum Co. survey 2005-07. Dillon Consulting Ltd, 40 recs.
40	Churchill, J.L., Klymko, J.D.D. 2016. Atlantic Canada Conservation Data Centre Fieldwork 2016. Atlantic Canada Conservation Data Centre.
40	Erskine, A.J. 1999. Maritime Nest Records Scheme (MNRS) 1937-1999. Canadian Wildlife Service, Sackville, 313 recs.
39	Klymko, J.J.D.; Robinson, S.L. 2012. 2012 field data. Atlantic Canada Conservation Data Centre, 447 recs.
39	Popma, T.M. 2003. Fieldwork 2003. Atlantic Canada Conservation Data Centre. Sackville NB, 113 recs.
38	Mazerolle, D.M. 2017. Atlantic Canada Conservation Data Centre Fieldwork 2017. Atlantic Canada Conservation Data Centre.
38	Thomas, P. 2018. CSC Dorchester Bobolink Survey. Environment Canada, Canadian Wildlife Service.
37	Benjamin, L.K. (compiler). 2001. Significant Habitat & Species Database. Nova Scotia Dept of Natural Resources, 15 spp, 224 recs.
37	Churchill, J.L. 2018. Atlantic Canada Conservation Data Centre Fieldwork 2017. Atlantic Canada Conservation Data Centre, 2318 recs.
34	Benedict, B. Connell Herbarium Specimens (Data). University New Brunswick, Fredericton. 2003.
33	Arsenault, M. 2019. Cormorant colony nest counts. PE Department of Communities, Land, and Environment.
32	Sollows, M.C., 2008. NBM Science Collections databases: mammals. New Brunswick Museum, Saint John NB, download Jan. 2008, 4983 recs.
31	Klymko, J.J.D. 2016. 2015 field data. Atlantic Canada Conservation Data Centre.
30	MacDonald, E.C. 2018. CWS Piping Plover Census, 2010-2017. Canadian Wildlife Service, 672 recs.
30	Neily, T.H. 2019. Tom Neily NS Bryophyte records (2009-2013). T.H. Neily, Atlantic Canada Conservation Data Centre, 1029 specimen records.
29	Neily, T.H. 2017. Nova Scotia lichen records. Mersey Tobeatic Research Institute.
28	e-Butterfly. 2018. Selected Maritimes butterfly records from 2016 and 2017. Maxim Larrivee, Sambo Zhang (ed.) e-butterfly.org.
27	Canadian Wildlife Service, Dartmouth. 2010. Piping Plover censuses 2007-09, 304 recs.
26	Ferguson, D.C. 1954. The Lepidoptera of Nova Scotia. Part I, macrolepidoptera. Proceedings of the Nova Scotian Institute of Science, 23(3), 161-375.
25	Belliveau, A. 2013. Rare species records from Nova Scotia. Mersey Tobeatic Research Institute, 296 records. 296 recs.
24	Amirault, D.L. & McKnight, J. 2003. Piping Plover Database 1991-2003. Canadian Wildlife Service, Sackville, unpublished data. 7 recs.
24	Klymko, J.J.D.; Robinson, S.L. 2014. 2013 field data. Atlantic Canada Conservation Data Centre.
24	McNeil, J.A. 2016. Blandings Turtle (<i>Emydoidea blandingii</i>), Eastern Ribbonsnake (<i>Thamnophis sauritus</i>), Wood Turtle (<i>Glyptemys insculpta</i>), and Snapping Turtle (<i>Chelydra serpentina</i>) sightings, 2016. Mersey Tobeatic Research Institute, 774 records.
24	Pepper, Chris. 2012. Observations of breeding Canada Warbler's along the Eastern Shore, NS. Pers. comm. to S. Blaney, Jan. 20, 28 recs.
23	Archibald, D.R. 2003. NS Freshwater Mussel Fieldwork. Nova Scotia Dept Natural Resources, 213 recs.
23	Blaney, C.S.; Mazerolle, D.M.; Hill, N.M. 2011. Nova Scotia Crown Share Land Legacy Trust Fieldwork. Atlantic Canada Conservation Data Centre, 5022 recs.
23	Epworth, W. 2016. Species at Risk records, 2014-2016. Fort Folly Habitat Recovery Program, 38 recs.
22	Benjamin, L.K. 2011. NSDNR fieldwork & consultant reports 1997, 2009-10. Nova Scotia Dept Natural Resources, 85 recs.
22	Cameron, R.P. 2018. <i>Degelia plumbea</i> records. Nova Scotia Environment.
22	Nelly, T.H. 2006. <i>Cyrtopodium arietinum</i> in Hants Co. Pers. comm. to C.S. Blaney. 22 recs, 22 recs.
22	Powell, B.C. 1967. Female sexual cycles of <i>Chrysemy spicta</i> & <i>Clemmys insculpta</i> in Nova Scotia. Can. Field-Nat., 81:134-139. 26 recs.
21	Cameron, R.P. 2009. <i>Erioderma pedicellatum</i> database, 1979-2008. Dept Environment & Labour, 103 recs.
21	Erskine, D. 1960. The plants of Prince Edward Island, 1st Ed. Research Branch, Agriculture Canada, Ottawa., Publication 1088. 1238 recs.
21	Klymko, J.J.D. 2018. 2017 field data. Atlantic Canada Conservation Data Centre.
21	MacDonald, E.C. 2018. Piping Plover nest records from 2010-2017. Canadian Wildlife Service.
21	Manthorne, A. 2019. Incidental aerial insectivore observations. Birds Canada.
21	NS DNR. 2017. Black Ash records from NS DNR Permanent Sample Plots (PSPs), 1965-2016. NS Dept of Natural Resources.
21	Ogden, K. Nova Scotia Museum butterfly specimen database. Nova Scotia Museum. 2017.
20	Bagnell, B.A. 2001. New Brunswick Bryophyte Occurrences. B&B Botanical, Sussex, 478 recs.
20	Blaney, C.S. 2019. Sean Blaney 2019 field data. Atlantic Canada Conservation Data Centre, 4407 records.
20	Blaney, C.S.; Mazerolle, D.M. 2009. Fieldwork 2009. Atlantic Canada Conservation Data Centre. Sackville NB, 13395 recs.
20	Hinds, H.R. 1986. Notes on New Brunswick plant collections. Connell Memorial Herbarium, unpubl, 739 recs.
19	Chiasson, R. 2018. Breeding bird observations from NBWTF project. pers. comm. to S. Blaney.
19	Clayden, S.R. 2007. NBM Science Collections databases: vascular plants. New Brunswick Museum, Saint John NB, download Mar. 2007, 6914 recs.
18	Clayden, S. Digitization of Wolfgang Maass Nova Scotia forest lichen collections, 1964-2004. New Brunswick Museum. 2018.
18	Klymko, J. Dataset of butterfly records at the New Brunswick Museum not yet accessioned by the museum. Atlantic Canada Conservation Data Centre. 2016.
18	Phinney, Lori; Toms, Brad; et. al. 2016. Bank Swallows (<i>Riparia riparia</i>) in Nova Scotia: inventory and assessment of colonies. Merser Tobeatic Research Institute, 25 recs.
18	Porter, C.J.M. 2014. Field work data 2007-2014. Nova Scotia Nature Trust, 96 recs.

# recs	CITATION
17	Bateman, M.C. 2001. Coastal Waterfowl Surveys Database, 1965-2001. Canadian Wildlife Service, Sackville, 667 recs.
16	Basquill, S.P. 2012. 2012 rare vascular plant field data. Nova Scotia Department of Natural Resources, 37 recs.
16	Cameron, R.P. 2013. 2013 rare species field data. Nova Scotia Department of Environment, 71 recs.
16	Doucet, D.A. 2007. Lepidopteran Records, 1988-2006. Doucet, 700 recs.
16	Klymko, J.J.D. 2012. Insect fieldwork & submissions, 2011. Atlantic Canada Conservation Data Centre. Sackville NB, 760 recs.
16	Mazerolle, D.M. 2005. Bouctouche Irving Eco-Centre rare coastal plant fieldwork results 2004-05. Irving Eco-centre, la Dune du Bouctouche, 174 recs.
16	Munro, Marian K. Nova Scotia Provincial Museum of Natural History Herbarium Database. Nova Scotia Provincial Museum of Natural History, Halifax, Nova Scotia. 2014.
15	Basquill, S.P. 2011 vascular plant field data. Nova Scotia Department of Natural Resources, 37 recs.
15	Neily, T.H. 2010. Erioderma Pedicellatum records 2005-09. Mersey Tobiatic Research Institute, 67 recs.
15	Richardson, D., Anderson, F., Cameron, R., McMullin, T., Clayden, S. 2014. Field Work Report on Black Foam Lichen (Anzia colpodes). COSEWIC.
14	Benedict, B. Connell Herbarium Specimen Database Download 2004. Connell Memorial Herbarium, University of New Brunswick. 2004.
14	Bryson, I. 2020. Nova Scotia and Newfoundland rare species observations, 2018-2020. Nova Scotia Environment.
14	Thomas, A.W. 1996. A preliminary atlas of the butterflies of New Brunswick. New Brunswick Museum.
14	Tingley, S. (compiler). 2001. Butterflies of New Brunswick. , Web site: www.geocities.com/Yosemite/8425/buttrfly. 142 recs.
13	Basquill, S.P. 2003. Fieldwork 2003. Atlantic Canada Conservation Data Centre, Sackville NB, 69 recs.
13	Blaney, C.S. Miscellaneous specimens received by ACCDC (botany). Various persons. 2001-08.
13	Curley, F.R. 2005. PEF&W Collection 2003-04. PEI Fish & Wildlife Div., 716 recs.
13	Neily, T.H. & Pepper, C.; Toms, B. 2020. Nova Scotia lichen database [as of 2020-03-18]. Mersey Tobeatic Research Institute.
13	Nova Scotia Nature Trust. 2014. Ladyslipper records from Saint Croix Nova Scotia, JLC Ed. Nova Scotia Nature Trust.
13	Oldham, M.J. 2000. Oldham database records from Maritime provinces. Oldham, M.J.; ONHIC, 487 recs.
12	Epworth, W. 2012. Species at Risk records, 2009-11. Fort Folly Habitat Recovery Program, 162 recs.
12	Gilhen, J. 1984. Amphibians & Reptiles of Nova Scotia, 1st Ed. Nova Scotia Museum, 164pp.
12	Goltz, J.P. & Bishop, G. 2005. Confidential supplement to Status Report on Prototype Quillwort (Isoetes prototypus). Committee on the Status of Endangered Wildlife in Canada, 111 recs.
12	Holder, M.L.; Kingsley, A.L. 2000. Kinglsey and Holder observations from 2000 field work.
12	Neily, T.H. 2013. Email communication to Sean Blaney regarding <i>Listera australis</i> observations made from 2007 to 2011 in Nova Scotia. , 50.
12	Pike, E., Tingley, S. & Christie, D.S. 2000. Nature NB Listserve. University of New Brunswick, listserv.unb.ca/archives/naturenb. 68 recs.
11	Cameron, R.P. 2014. 2013-14 rare species field data. Nova Scotia Department of Environment, 35 recs.
11	Doucet, D.A. 2009. Census of Globally Rare, Endemic Butterflies of Nova Scotia Gulf of St Lawrence Salt Marshes. Nova Scotia Dept of Natural Resources, Species at Risk, 155 recs.
11	McAlpine, D.F. 1983. Status & Conservation of Solution Caves in New Brunswick. New Brunswick Museum, Publications in Natural Science, no. 1, 28pp.
11	Sollows, M.C., 2009. NBM Science Collections databases: molluscs. New Brunswick Museum, Saint John NB, download Jan. 2009, 6951 recs (2957 in Atlantic Canada).
11	Webster, R.P. & Edsall, J. 2007. 2005 New Brunswick Rare Butterfly Survey. Environmental Trust Fund, unpublished report, 232 recs.
11	Webster, R.P. Atlantic Forestry Centre Insect Collection, Maritimes butterfly records. Natural Resources Canada. 2014.
10	Belliveau, A.G. & Vail, Cole; King, Katie. 2020. New Allium tricoccum locations, Cornwallis River. Chapman, C.J. (ed.) Acadia University.
10	Hill, N.M. 1994. Status report on the Long's bulrush <i>Scirpus longii</i> in Canada. Committee on the Status of Endangered Wildlife in Canada, 7 recs.
10	Klymko, J. 2019. Atlantic Canada Conservation Data Centre zoological fieldwork 2018. Atlantic Canada Conservation Data Centre.
10	Neily, T. H. 2018. Lichen and Bryophyte records, AEI 2017-2018. Tom Neily; Atlantic Canada Conservation Data Centre.
10	Speers, L. 2008. Butterflies of Canada database: New Brunswick 1897-1999. Agriculture & Agri-Food Canada, Biological Resources Program, Ottawa, 2048 recs.
9	Adams, J. & Herman, T.B. 1998. Thesis, Unpublished map of <i>C. insculpta</i> sightings. Acadia University, Wolfville NS, 88 recs.
9	Benjamin, L.K. 2006. <i>Cyripedium arietinum</i> . Pers. comm. to D. Mazerolle. 9 recs, 9 recs.
9	Chapman, C.N. (Cody). 2020. Nova Scotia Black Ash (<i>Fraxinus nigra</i>) field observations by Confederacy of Mainland Mi'kmaq. Forestry Program, Confederacy of Mainland Mi'kmaq.
9	Chaput, G. 2002. Atlantic Salmon: Maritime Provinces Overview for 2001. Dept of Fisheries & Oceans, Atlantic Region, Science Stock Status Report D3-14. 39 recs.
9	Downes, C. 1998-2000. Breeding Bird Survey Data. Canadian Wildlife Service, Ottawa, 111 recs.
9	Neily, T.H. & Pepper, C.; Toms, B. 2020. Nova Scotia lichen database [as of 2020-05-25]. Mersey Tobeatic Research Institute, 668 recs.
9	Olsen, R. Herbarium Specimens. Nova Scotia Agricultural College, Truro. 2003.
8	Benjamin, L.K. 2012. NSDNR fieldwork & consultant reports 2008-2012. Nova Scotia Dept Natural Resources, 196 recs.
8	Edsall, J. 2001. Lepidopteran records in New Brunswick, 1997-99. , Pers. comm. to K.A. Bredin. 91 recs.
8	Giberson, D. 2008. UPEI Insect Collection. University of Prince Edward Island, 157 recs.
8	Hinds, H.R. 1999. Connell Herbarium Database. University New Brunswick, Fredericton, 131 recs.
7	Cameron, B. 2006. <i>Hepatica americana</i> Survey at Scotia Mine Site in Gays River, and Discovery of Three Yellow-listed Species. Conestoga-Rovers and Associates, (a consulting firm), october 25. 7 recs.
7	Goltz, J.P. 2012. Field Notes, 1989-2005. , 1091 recs.
7	Klymko, J. Partial database of the Agriculture Canada Charlottetown Research Station Insect Collection butterfly specimens. Atlantic Canada Conservation Data Centre. 2016.
7	Mazerolle, D.M. 2020. Atlantic Canada Conservation Data Centre botanical fieldwork 2019. Atlantic Canada Conservation Data Centre.
7	Richardson, D., Anderson, F., Cameron, R, Pepper, C., Clayden, S. 2015. Field Work Report on the Wrinkled Shingle lichen (<i>Pannaria lurida</i>). COSEWIC.
7	Smith, M.E.M. 2008. AgCan Collection. Agriculture Canada, Charlottetown PE, 44 recs.
7	White, S. 2019. Notable species sightings, 2018. East Coast Aquatics.
6	Basset, I.J. & Crompton, C.W. 1978. The Genus <i>Suaeda</i> (Chenopodiaceae) in Canada. Canadian Journal of Botany, 56: 581-591.
6	Benjamin, L.K. 2009. Boreal Felt Lichen, Mountain Avens, Orchid and other recent records. Nova Scotia Dept Natural Resources, 105 recs.
6	Brazner, J.; Hill, N. 2018. Plant observations along the Cornwallis River, Nova Scotia. Nova Scotia Department of Lands and Forestry.
6	Caissie, A. Herbarium Records. Fundy National Park, Alma NB. 1961-1993.

# recs	CITATION
6	Cameron, R.P. 2017. 2017 rare species field data. Nova Scotia Environment, 64 recs.
6	Edsall, J. 2007. Personal Butterfly Collection: specimens collected in the Canadian Maritimes, 1961-2007. J. Edsall, unpubl. report, 137 recs.
6	Glen, W. 1991. 1991 Prince Edward Island Forest Biomass Inventory Data. PEI Dept of Energy and Forestry, 10059 recs.
6	Hall, R. 2008. Rare plant records in old fieldbook notes from Truro area. Pers. comm. to C.S. Blaney. 6 recs, 6 recs.
6	Matthew Smith. 2010. Field trip report from Avon Caving Club outlining the discovery of <i>Cyripedium arietinum</i> and <i>Hepatica nobilis</i> populations. Public Works and Government Services Canada.
6	Neily, T.H. 2017. Maritimes Lichen and Bryophyte records. Atlantic Canada Conservation Data Centre, 1015 recs.
6	O'Neil, S. 1998. Atlantic Salmon: Northumberland Strait Nova Scotia part of SFA 18. Dept of Fisheries & Oceans, Atlantic Region, Science. Stock Status Report D3-08. 9 recs.
5	Bredin, K.A. 2002. NS Freshwater Mussel Fieldwork. Atlantic Canada Conservation Data Center, 30 recs.
5	Cameron, R.P. 2006. <i>Erioderma pedicellatum</i> 2006 field data. NS Dept of Environment, 9 recs.
5	Cameron, R.P. 2012. Additional rare plant records, 2009. , 7 recs.
5	Cameron, R.P. 2012. Rob Cameron 2012 vascular plant data. NS Department of Environment, 30 recs.
5	Carter, Jeff; Churchill, J.; Churchill, I.; Churchill, L. 2020. Bank Swallow colony Scots Bay, NS. Atlantic Canada Conservation Data Centre.
5	Clayden, S.R. 2005. Confidential supplement to Status Report on Ghost Antler Lichen (<i>Pseudevernia cladonia</i>). Committee on the Status of Endangered Wildlife in Canada, 27 recs.
5	Honeyman, K. 2019. Unique Areas Database, 2018. J.D. Irving Ltd.
5	Kennedy, Joseph. 2010. New Brunswick Peregrine records, 2009. New Brunswick Dept Natural Resources, 19 recs (14 active).
5	Majka, C.G. 2008. Lepidoptera at St Patricks, 1993-2007. Pers. comm. to R. Curley, 8 Jan. 29 recs, 29 recs.
5	NatureServe Canada. 2018. iNaturalist Butterfly Data Export . iNaturalist.org and iNaturalist.ca.
5	Nova Scotia Nature Trust. 2013. Nova Scotia Nature Trust 2013 Species records. Nova Scotia Nature Trust, 95 recs.
5	Sabine, D.L. 2013. Dwaine Sabine butterfly records, 2009 and earlier.
5	Towell, C. 2014. 2014 Northern Goshawk and Common Nighthawk email reports, NS. NS Department of Natural Resources.
5	Webster, R.P. 2004. Lepidopteran Records for National Wildlife Areas in New Brunswick. Webster, 1101 recs.
5	Wilhelm, S.I. et al. 2019. Colonial Waterbird Database. Canadian Wildlife Service.
4	Belland, R.J. 2012. PEI moss records from Devonian Botanical Garden. DBG Cryptogam Database, Web site: https://secure.devonian.ualberta.ca/bryo_search.php 748 recs.
4	Benjamin, L.K. 2009. NSDNR Fieldwork & Consultants Reports. Nova Scotia Dept Natural Resources, 143 recs.
4	Brunelle, P.-M. (compiler). 2010. ADIP/MDDS Odonata Database: NB, NS Update 1900-09. Atlantic Dragonfly Inventory Program (ADIP), 935 recs.
4	Cameron, R.P. 2009. Nova Scotia nonvascular plant observations, 1995-2007. Nova Scotia Dept Natural Resources, 27 recs.
4	Cody, W.J. 2003. Nova Scotia specimens of <i>Equisetum pratense</i> at the DAO herbarium in Ottawa. , Pers. comm. to C.S. Blaney. 4 recs.
4	Daury, R.W. & Bateman, M.C. 1996. The Barrow's Goldeneye (<i>Bucephala islandica</i>) in the Atlantic Provinces and Maine. Canadian Wildlife Service, Sackville, 47pp.
4	Forsythe, B. 2006. <i>Cyripedium arietinum</i> at Meadow Pond, Hants Co. Pers. comm. to C.S. Blaney. 4 recs, 4 recs.
4	Klymko, J.J.D. 2012. Insect field work & submissions. Atlantic Canada Conservation Data Centre, 852 recs.
4	Majka, C. 2009. Université de Moncton Insect Collection: Carabidae, Cerambycidae, Coccinellidae. Université de Moncton, 540 recs.
4	Mills, Pamela. 2007. <i>Iva frutescens</i> records. Nova Scotia Dept of Natural Resources, Wildlife Div. Pers. comm. to S. Basquill, 4 recs.
4	Robinson, S.L. 2010. Fieldwork 2009 (dune ecology). Atlantic Canada Conservation Data Centre. Sackville NB, 408 recs.
4	Sabine, D.L. 2012. Bronze Copper records, 2003-06. New Brunswick Dept of Natural Resources, 5 recs.
4	Shortt, R. Connell Herbarium Black Ash specimens. University New Brunswick, Fredericton. 2019.
4	Wissink, R. 2006. Fundy National Park Digital Database. Parks Canada, 41 recs.
3	Basquill, S.P., Porter, C. 2019. Bryophyte and lichen specimens submitted to the E.C. Smith Herbarium. NS Department of Lands and Forestry.
3	Bateman, M.C. 2000. Waterfowl Brood Surveys Database, 1990-2000 . Canadian Wildlife Service, Sackville, unpublished data. 149 recs.
3	Cameron, R.P. 2005. <i>Erioderma pedicellatum</i> unpublished data. NS Dept of Environment, 9 recs.
3	Curley, F.R. 2007. PEF&W Collection. PEI Fish & Wildlife Div., 199 recs.
3	Doubt, J. 2013. Email to Sean Blaney with Nova Scotia records of <i>Fissidens exilis</i> at Canadian Museum of Nature. pers. comm., 3 records.
3	Kennedy, Joseph. 2010. New Brunswick Peregrine records, 2010. New Brunswick Dept Natural Resources, 16 recs (11 active).
3	Klymko, J. Butterfly records at the Nova Scotia Museum not yet accessioned by the museum. Atlantic Canada Conservation Data Centre. 2017.
3	Klymko, J. Université de Moncton insect collection butterfly record dataset. Atlantic Canada Conservation Data Centre. 2017.
3	McNeil, J.A. 2019. Snapping Turtle records, 2019. Mersey Tobeatic Research Institute.
3	Newell, R. E., MacKinnon, C. M. & Kennedy, A. C. 2006. Botanical Survey of Boot Island National Wildlife Area, Nova Scotia, 2004. Canadian Wildlife Service, Atlantic Region, Technical Report Series Number 450. 3 recs.
3	Nova Scotia Department of Lands and Forestry. 2018. Wood Turtle observations in, or near, the cornwallis River watershed. NS DLF, pers. comm. to AC CDC.
3	Parker, M. 2016. Wood turtle (<i>Glyptemys insculpta</i>) Visual Surveys at Black, Wallace, Musquodobit and Sackville Rivers, Nova Scotia. East Coast Aquatics Inc., 3 records.
3	Phillips, B. 2017. Emails to John Klymko regarding Eastern Waterfowl (<i>Peltigera hydrothryia</i>) occurrences in Fundy National Park. Fundy Biosphere Reserve, 3 recs.
3	Plißner, J.H. & Haig, S.M. 1997. 1996 International piping plover census. US Geological Survey, Corvallis OR, 231 pp.
3	Sollows, M.C. 2008. NBM Science Collections databases: herpetiles. New Brunswick Museum, Saint John NB, download Jan. 2008, 8636 recs.
3	Standley, L.A. 2002. <i>Carex haydenii</i> in Nova Scotia. , Pers. comm. to C.S. Blaney. 4 recs.
3	Thompson, R. 2018. Williamsdale Quarry Expansion Project, NS, Environmental Assessment rare plants. Dexter Construction Company Limited.
3	Williams, M. Cape Breton University Digital Herbarium. Cape Breton University Digital Herbarium. 2013.
3	Wissink, R. 2000. Rare Plants of Fundy: maps. Parks Canada, 20 recs.
3	Zahavich, J. 2018. Canada Warbler and Olive-sided Flycatcher records 2018. Island Nature Trust, 14 recs.
2	Amirault, D.L. 2003. 2003 Peregrine Falcon Survey. Canadian Wildlife Service, Sackville, unpublished data. 7 recs.

# recs	CITATION
2	Amiro, Peter G. 1998. Atlantic Salmon: Inner Bay of Fundy SFA 22 & part of SFA 23. Dept of Fisheries & Oceans, Atlantic Region, Science Stock Status Report D3-12. 4 recs.
2	Basquill, S.P. 2009. 2009 field observations. Nova Scotia Dept of Natural Resources.
2	Belliveau, A.G. E.C. Smith Herbarium Specimen Database 2019. E.C. Smith Herbarium, Acadia University. 2019.
2	Benedict, B. Connell Herbarium Specimens, Digital photos. University New Brunswick, Fredericton. 2005.
2	Boyne, A.W. & Grecian, V.D. 1999. Tern Surveys. Canadian Wildlife Service, Sackville, unpublished data. 23 recs.
2	Bredin, K.A. 2001. WTF Project: Freshwater Mussel Fieldwork in Freshwater Species data. Atlantic Canada Conservation Data Centre, 101 recs.
2	Christie, D.S. 2000. Christmas Bird Count Data, 1997-2000. Nature NB, 54 recs.
2	Clerc, P. 2011. Notes on the genus <i>Usnea</i> Adanson (lichenized Ascomycota). III. Bibliotheca Lichenologica, 106, 41-51.
2	COSEWIC (Committee on the Status of Wildlife in Canada). 2013. COSEWIC Assessment and Status Report on the Eastern Waterfern <i>Peltigera hydrothyria</i> in Canada. COSEWIC, 46 pp.
2	Donell, R. 2008. Rare plant records from rare coastal plant project. Bouctouche Dune Irving Eco-centre. Pers. comm. to D.M. Mazerolle, 50 recs.
2	Epworth, W. 2013. Species at Risk records, 2013. Fort Folly Habitat Recovery Program, 27 recs.
2	Gagnon, E. Herbarium from 2017 Plant Systematics class. Université de Moncton. 2017.
2	Harding, R.W. 2008. Harding Personal Insect Collection 1999-2007. R.W. Harding, 309 recs.
2	Harris, P. 2004. Plant records from 1997-2003. Island Nature Trust, Charlottetown PE, 71 recs.
2	Hicklin, P.W. 1995. The Maritime Shorebird Survey Newsletter. Calidris, No. 3. 6 recs.
2	Kelly, Glen 2004. Botanical records from 2004 PEI Forestry fieldwork. Dept of Environment, Energy & Forestry, 71 recs.
2	Klymko, J.J.D. 2010. Miscellaneous observations reported to ACCDC (zoology). Pers. comm. from various persons, 3 recs.
2	LaPaix, R.; Parker, M. 2013. email to Sean Blaney regarding <i>Listera australis</i> observations near Kearney Lake. East Coast Aquatics, 2.
2	Macaulay, M. Notes on newly discovered <i>Hepatica nobilis</i> var. <i>obtusata</i> population in Cumberland Co. NS. Pers. comm. to S. Blaney, 1 rec.
2	Macaulay, M. 2008. Email to Sean Blaney regarding rich hardwood floodplain site at Howards Pool, Wallace River, NS.
2	Manning, I. 2020. Peregrine Falcon nest site observations. pers. comm. to J. Churchill.
2	Mazerolle, D. 2003. Assessment of Seaside Pinweed (<i>Lechea maritima</i> var. <i>subcylindrica</i>) in Southeastern New Brunswick. Irving Eco-centre, la Dune du Bouctouche, 18 recs.
2	McAlpine, D.F. 1998. NBM Science Collections: Wood Turtle records. New Brunswick Museum, Saint John NB, 329 recs.
2	McLean, K. 2019. Species At Risk observations. Clean Annapolis River Project.
2	Munro, M. 2003. <i>Caulophyllum thalictroides</i> & <i>Carex hirtifolia</i> at Herbert River, Brooklyn, NS. , Pers. comm. to C.S. Blaney. 2 recs.
2	Munro, M. 2003. <i>Dirca palustris</i> & <i>Hepatica nobilis</i> var. <i>obtusata</i> at Cogmagun River, NS. , Pers. comm. to C.S. Blaney . 2 recs.
2	NatureServe Canada. 2018. iNaturalist Maritimes Butterfly Records. iNaturalist.org and iNaturalist.ca.
2	Neily, T.H.; Smith, C.; Whitman, E. 2011. NCC Logging Lake (Halifax Co. NS) properties baseline survey data. Nature Conservancy of Canada, 2 recs.
2	Newell, R.E. 2006. Rare plant observations in Digby Neck. Pers. comm. to S. Blaney, 6 recs.
2	Nye, T. 2002. Wood Turtle observations in Westmorland, Queens Cos. , Pers. com. to S.H. Gerriets, Dec. 3. 3 recs.
2	Shafer, A.B.A., D.T. Stewart. 2006. A Disjunct Population of <i>Sorex dispar</i> (Long-Tailed Shrew) in Nova Scotia. Northeastern Naturalist, 13(4): 603-608.
2	Speers, L. 2001. Butterflies of Canada database. Agriculture & Agri-Food Canada, Biological Resources Program, Ottawa, 190 recs.
2	Webster, R.P. Database of R.P. Webster butterfly collection. 2017.
2	White, S. 2018. Notable species sightings, 2016-2017. East Coast Aquatics.
2	Zahavich, J. 2017. Canada Warbler and Olive-sided Flycatcher records 2017. Island Nature Trust, 14 recs.
1	Amirault, D.L. 1997-2000. Unpublished files. Canadian Wildlife Service, Sackville, 470 recs.
1	Amirault, D.L. 2000. Piping Plover Surveys, 1983-2000. Canadian Wildlife Service, Sackville, unpublished data. 70 recs.
1	Amirault, D.L. 2005. 2005 Peregrine Falcon Survey. Canadian Wildlife Service, Sackville, unpublished data. 27 recs.
1	Anon. Dataset of butterfly records for the Maritime provinces. Museum of Comparative Zoology, Harvard University. 2017.
1	Askanas, H. 2016. New Brunswick Wood Turtle Database. New Brunswick Department of Energy and Resource Development.
1	Basquill, S. P. 2008. Nova Scotia Dept of Natural Resources.
1	Basquill, S.P. 2004. <i>C. americana</i> and <i>Sedum</i> sp records, 2002. Pers. comm. to C.S. Blaney. 2 recs, 2 recs.
1	Basquill, S.P. 2012. 2012 Bryophyte specimen data. Nova Scotia Department of Natural Resources, 37 recs.
1	Basquill, S.P. 2018. Various specimens, NS DNR field work. NS Department of Natural Resources, 10.
1	Benjamin, L.K. 2003. <i>Cyrtopodium arietinum</i> in Cogmagun River NS. Pers. comm. to S. Blaney, 1 rec.
1	Blaney, C.S. & Whittam, R.M. 2003. Botanical & freshwater mussel observations at Lake Killarney, Cumberland Co., NS - Sept. 27, 2003. Atlantic Canada Conservation Data Centre, 3 recs.
1	Blaney, C.S. 1999. Fieldwork 1999. Atlantic Canada Conservation Data Centre. Sackville NB, 292 recs.
1	Blaney, C.S. 2014. 2014 Bank Swallow colony observation, Westcock, NB. Atlantic Canada Conservation Data Centre.
1	Boyne, A.W. 2000. Tern Surveys. Canadian Wildlife Service, Sackville, unpublished data. 168 recs.
1	Bridgehouse, Derek Email to John Klymko detailing records of butterflies collected by Derek Bridgehouse in July 2017. Bridgehouse, Derek. 2017.
1	Bridgehouse, Derek. 2018. Record of <i>Callophrys henrici</i> from Nova Scotia, emailed to J. Klymko 31 May 2018. Pers. comm.
1	Bruce, J. 2014. 2014 Wood Turtle email report, Nine Mile River, NS. NS Department of Natural Resources.
1	Butterflies and Moths of North America. 2016. <i>Satyrion liparops</i> record from Nova Scotia gleaned from BAMONA. Lotts, Kelly (ed.) BAMONA.
1	Clavette, A., and others. 2013. Peregrine Falcon nesting information from NatureNB listserv. NatureNB.
1	Cowie, Faye. 2007. Surveyed Lakes in New Brunswick. Canadian Rivers Institute, 781 recs.
1	Crowell, A. 2004. <i>Cyrtopodium arietinum</i> in Weir Brook, Hants Co. Pers. comm. to S. Blaney, 1 rec.
1	deGooyer, K. 2019. Snapping Turtle and Eastern White Cedar observations. Nova Scotia Environment.
1	Dibblee, R.L. 1999. PEI Cormorant Survey. Prince Edward Island Fisheries, Aquaculture & Environment, 1p. 21 recs.
1	Doucet, D.A. ACCDC Reference Collection. Atlantic Canada Conservation Data Centre, Sackville NB. 2008.

# recs	CITATION
1	Eastman, A. 2019. Snapping Turtle observation at Brookfield, Colchester Co. NS. Halifax Field Naturalists Nova Scotia Nature Archive Facebook Page, 1 record.
1	Eastman, Al. 2019. Bronze Copper observation at Brookfield Wetlands, NS. Halifax Field Naturalists Nova Scotia Nature Archive Facebook Page, 1 rec.
1	Edge, Thomas A. 1984. Status report on the Atlantic Whitefish (<i>Coregonus huntsmani</i>). Committee on the Status of Endangered Wildlife in Canada.
1	Frittaion, C. 2012. NSNT 2012 Field Observations. Nova Scotia Nature Trust, Pers comm. to S. Blaney Feb. 7, 34 recs.
1	Gagnon, J. 2004. Specimen data from 2002 visit to Prince Edward Island. , 104 recs.
1	Gerriets, S.H. 1997-2001. Element Occurrence Database. Atlantic Canada Conservation Data Centre, Sackville NB, 1 rec.
1	Harris, Megan. 2018. Miscellaneous <i>Sorex palustris</i> record. Pers. comm. to S. Blaney.
1	Hill, N.; Manning, I. 2020. Wild Leek observation, Cornwallis River, NS, floodplain. pers. comm. to J. Churchill.
1	Hill, N.M. 2013. email communications to Sean Blaney and David Mazerolle regarding the discovery of <i>Listera australis</i> populations at Black River Lake and Middlewood. , 2.
1	Hinds, H.R. 1992. Rare Vascular Plants of Fundy National Park. , 10 recs.
1	Hinds, H.R. 2000. Rare plants of Fundy in Rare Plants of Fundy: maps. Wissink, R. (ed.) Parks Canada, 2 recs.
1	Jacques Whitford Ltd. 2003. Cananda Lily location. Pers. Comm. to S. Blaney. 2pp, 1 rec, 1 rec.
1	Kirkland, G.L. Jr. & Schmidt, D.F. 1982. Abundance, habitat, reproduction & morphology of forest-dwelling small mammals of NS & south-eastern NB. Can. Field-Nat., 96(2): 156-162. 1 rec.
1	Kirkland, G.L. Jr., Schmidt, D.F. & Kirkland, C.J. 1979. First record of the long-tailed shrew (<i>Sorex dispar</i>) in New Brunswick. Can. Field-Nat., 93: 195-198. 1 rec.
1	Klymko, J. Henry Hensel's Butterfly Collection Database. Atlantic Canada Conservation Data Centre. 2016.
1	Klymko, J.J.D. 2016. 2014 field data. Atlantic Canada Conservation Data Centre.
1	Lautenschlager, R.A. 2010. Miscellaneous observations reported to ACCDC (zoology). Pers. comm. from various persons, 2 recs.
1	MacPhail, V. Bee and syrphid specimens from MSc research. Pers. comm., J. Klymko. 2006.
1	Majka, C.G. & McCorquodale, D.B. 2006. The Coccinellidae (Coleoptera) of the Maritime Provinces of Canada: new records, biogeographic notes, and conservation concerns. Zootaxa. Zootaxa, 1154: 49-68. 7 recs.
1	Majka, C.G. 1967. The butterflies of Albert County. Bulletin of the Moncton Naturalists Club, 13-20.
1	Majka, C.G. 1968. Additions to the butterflies of New Brunswick. Bulletin of the Moncton Naturalists Club, 13.
1	Manning, I. 2020. Peregrine Falcon observation. Pers. comm. to J.L. Churchill.
1	Miller, D.G. 2013. Peregrine Falcon nesting information from birdingnewbrunswick.ca. birdingnewbrunswick.ca.
1	Morrison, Annie. 2010. NCC Properties Fieldwork: June-August 2010. Nature Conservancy Canada, 508 recs.
1	Neily, P.D. Plant Specimens. Nova Scotia Dept Natural Resources, Truro. 2006.
1	Neily, T.H. & Pepper, C.; Toms, B. 2015. Nova Scotia lichen location database [as of 2015-02-15]. Mersey Tobeatic Research Institute, 1691 records.
1	Neily, T.H. 2004. <i>Hepatica nobilis</i> var. <i>obtusa</i> record for Falmouth NS. Pers. comm. to C.S. Blaney, 1 rec.
1	Neily, T.H. 2013. Email communication to Sean Blaney regarding <i>Agalinis paupercula</i> observations made in 2013 in Nova Scotia. , 1 rec.
1	Neily, T.H. Tom Neily NS Sphagnum records (2009-2014). T.H. Neily, Atlantic Canada Conservation Data Centre. 2019.
1	Newell, R.E. 2004. <i>Hepatica nobilis</i> var. <i>obtusa</i> record. Pers. comm. to S. Blaney, 1 rec.
1	Niel, K. & Majka, C. 2008. New Records of Tiger Beetles (Coleoptera: Carabidae: Cicindelinae) in Nova Scotia. Journal of the Acadian Entomological Society, 4: 3-6.
1	Novak, Pam. 2017. Email to John Klymko regarding <i>Chelydra serpentina</i> record.
1	O'Neil, S. 1998. Atlantic Salmon: Eastern Shore Nova Scotia SFA 20. Dept of Fisheries & Oceans, Atlantic Region, Science. Stock Status Report D3-10. 4 recs.
1	Parker, M. 2018. East Coast Aquatics ACCDC 2018 Report. East Coast Aquatics, 12 records.
1	Payzant, P. 2018. Satyr Comma record from Bible Hill, NS. https://novascotiabutterflies.ca .
1	Popma, K. 2001. Phalarope & other bird observations in Westmorland Co. , Pers. comm. to K.A. Bredin. 5 recs.
1	Robinson, C.B. 1907. Early intervalle flora of eastern Nova Scotia. Transactions of the Nova Scotia Institute of Science, 10:502-506. 1 rec.
1	Sabine, M. 2016. Black Ash records from NB DNR permanent forest sampling Plots. New Brunswick Department of Natural Resources, 39 recs.
1	Sabine, M. 2016. NB DNR staff incidental Black Ash observations. New Brunswick Department of Natural Resources.
1	Scott, F.W. 1988. Status Report on the Southern Flying Squirrel (<i>Glaucomys volans</i>) in Canada. Committee on the Status of Endangered Wildlife in Canada, 2 recs.
1	Shortt, R. UNB specimen data for various tracked species formerly considered secure. Connell Memorial Herbarium, UNB, Fredericton NB. 2019.
1	Spicer, C.D. 2004. Specimens from CWS Herbarium, Mount Allison Herbarium Database. Mount Allison University, 5939 recs.
1	te Raa, J. 2016. Island Naturalist. Nature PEI, 219.
1	Timmons, M. 2019. Telephone report of <i>Polygala polygama</i> at Aylesford Mountain, Kings Co., NS by Megan Timmons to C.S. Blaney. , 1 record.
1	Toner, M. 2001. Lynx Records 1973-2000. NB Dept of Natural Resources, 29 recs.
1	Tremblay, E. 2006. Kouchibouguac National Park Digital Database. Parks Canada, 105 recs.
1	Vinson, N. 2018. Email to S. Blaney regarding new occurrence of <i>Saxifraga paniculata</i> on Point Wolfe River. Parks Canada, 1 record.
1	Vinson, N. 2019. Eastern Waterfan record from Long Reach Brook, Fundy National Park, June 12, 2019. Parks Canada Agency, Fundy National Park, 1 record.
1	Wilson, G. 2013. 2013 Snapping Turtle email report, Wentworth, NS. Pers. comm.