

## **APPENDIX A: FIGURES**

Prepared For:



FIGURE 1

Proposed MacLellans Mountain Quarry Expansion

McLellans Brook, NS

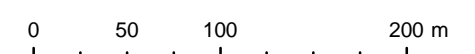
Legend

- 181026\_WPs\_EP
- Waypoints
- Culverts
- Quarry Discharge Channel
- Watercourses (NSE)
- Field Delineated Watercourse
- Maximum Quarry Extent
- Fish Habitat Local Assessment Area (LAA)
- Development Area A
- Development Area B
- Development Area C
- Field Delineated Wetland
- Study Area

5042500



Coordinate System: NAD 1983 UTM Zone 20N  
 Projection: Transverse Mercator  
 Datum: North American 1983  
 Units: Meter

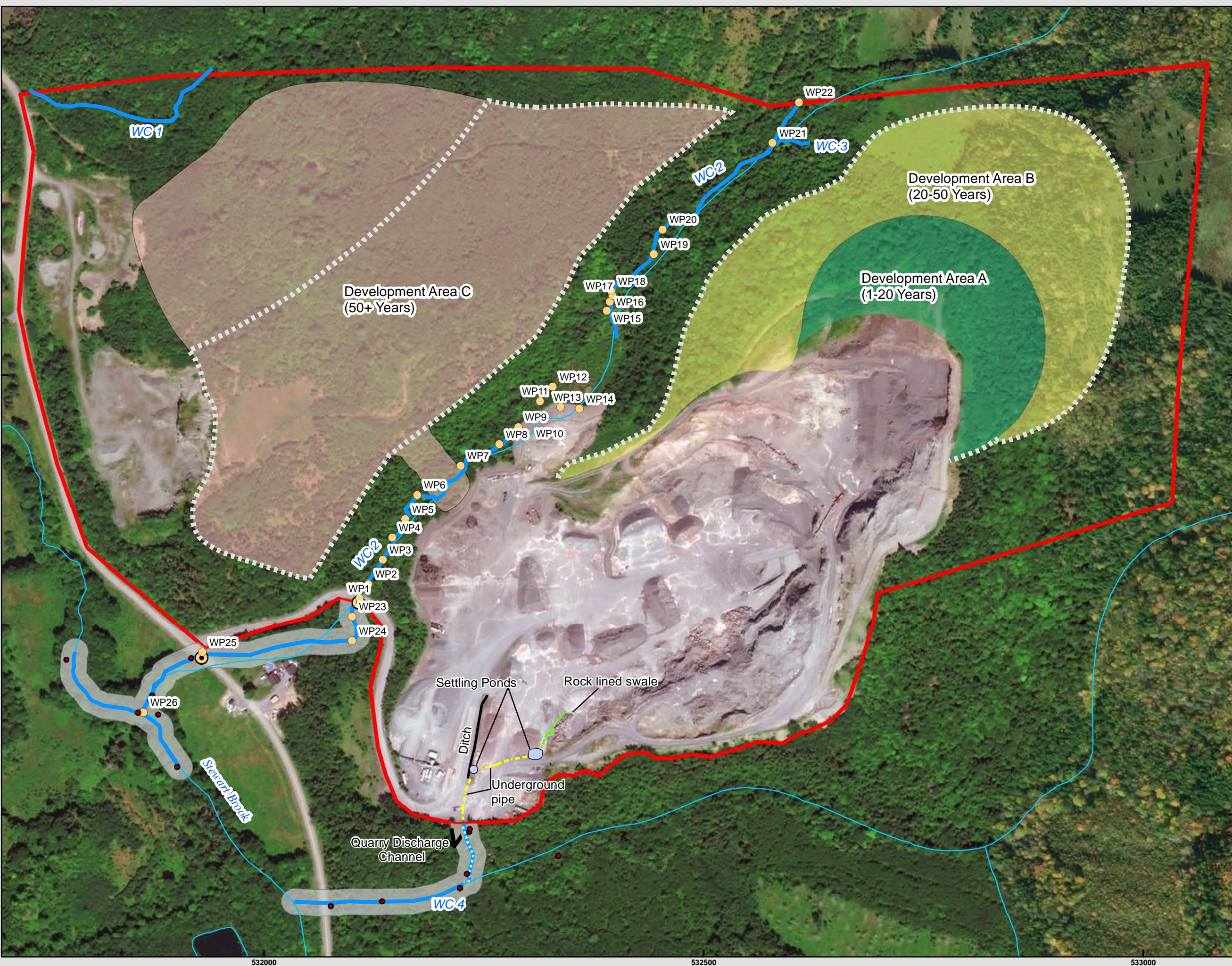


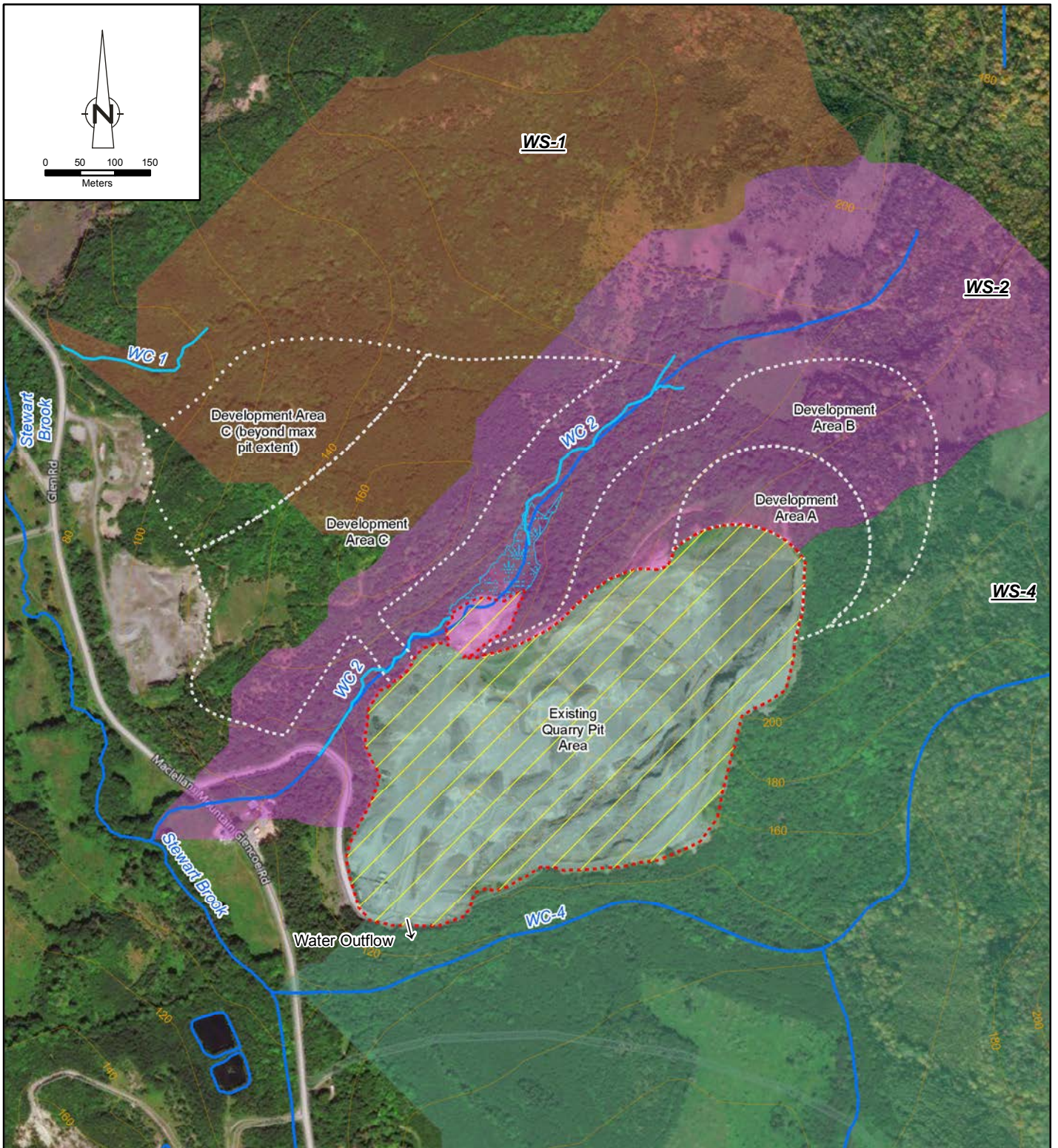
1:4,055 Scale when printed @ 11" x 17"

Drawn By: EP Date: 2019-03-12



McCallum Environmental Ltd.





Source: Contours and Watercourses from Nova Scotia Topographic Database (NSTDB); Imagery © Bing 2018  
 Coordinate System: NAD 1983 CSRS UTM Zone 20N



MACLELLANS MOUNTAIN QUARRY  
 MCLELLANS BROOK, PICTOU COUNTY, NOVA SCOTIA

11182531  
 Mar 13, 2019

PROPOSED EXPANSION  
 WATERSHED EVALUATION - EXISTING CONDITION

FIGURE 2