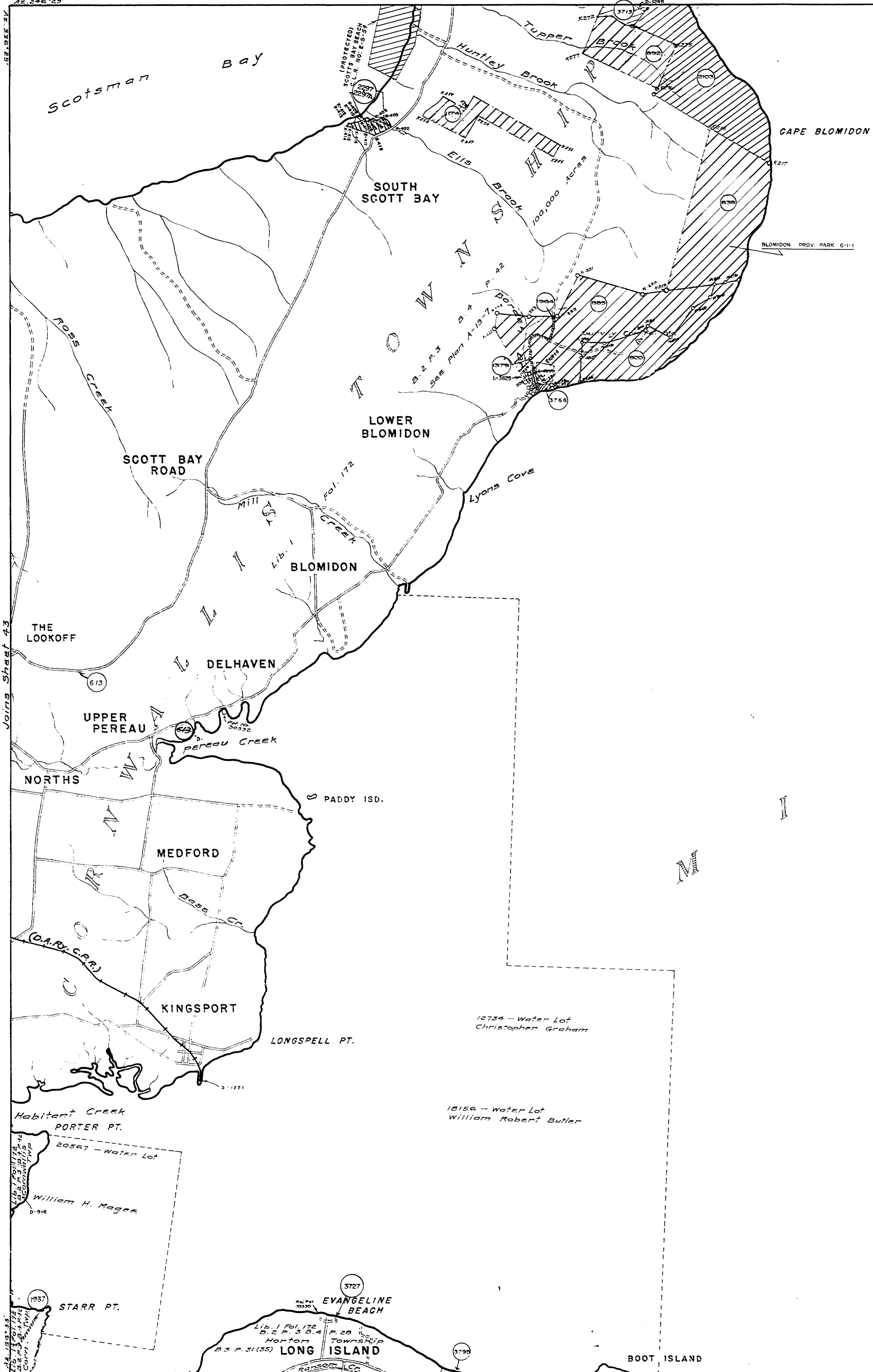


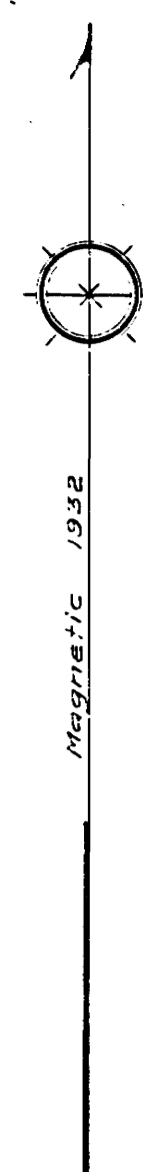
Joins Sheet 51



LIST OF VARIOUS GRANTS IN CORNWALLIS TOWNSHIP.

Lib. 1 Fol. 172 - B. 2 P. 3 - B. 4 P. 42 - Township of Cornwallis - 100,000 acres.

B. 3 P. 52 - Capt Jonathan Norcomb - 1/2 shares.
 B. 3 P. 82 (84) - John Burbridge - 1/2 shares.
 B. 3 P. 88 (88) - John Burbridge - 1 share.
 B. 3 P. 106 (102) - John Best - 1/2 shares - 750 Ac.
 B. 3 P. 140 (236) - Timothy Hatch - 1 share.
 B. 4 P. 126 - John Dupont, Jr. - 1 share.
 B. 4 P. 127 - Robert Dupont - 1 share.
 B. 4 P. 191 - John Arnold Hammond - 1 share.
 B. 4 P. 144 - Handley Chipman & Thomas Handley Chipman - 2 shares.
 B. 4 P. 167 - John Best - 1/2 shares - 750 Ac.
 B. 4 P. 182 - Jonathan Parker - 1 share.
 B. 4 P. 257 - Timothy Hatch - 1 share.
 B. 4 P. 292 - B. 5 P. 109 - Caleb Wheaton - 1/2 share.
 B. 4 P. 344 - B. 5 P. 104 - Elisha Freeman - 1/2 shares.
 B. 5 P. 64 - B. 6 P. 32 - Abel Burbridge - 1 share.
 B. 5 P. 60 - B. 6 P. 13 - Robert Thompson - 1 share - Escheated.
 B. 5 P. 268 - B. 6 P. 108 - Jonathan Longfellow - 1 share.
 B. 6 P. 68 - Elisha Freeman - License to Alienate.
 B. 6 P. 204 - Lurania Woodroff -
 B. 6 P. 216 - David Bentley et al. -
 B. 6 P. 255 - B. 7 P. 186 - Samuel Backwith, et al. - 50 3/8 shares.
 B. 6 P. 331 - Stephen Chase, et al. - License to Alienate.
 B. 6 P. 595 - Elisha Parker -
 B. 6 P. 595 - Caleb Wheaton, et al. -
 B. 6 P. 596 - Samuel Druster, et al. -
 B. 6 P. 596 - Nathan Shiles, et al. -
 B. 6 P. 624 - John Lowden -
 B. 6 P. 659 - Samuel Backwith, et al. -
 B. 6 P. 659 - Stephen Chase -
 B. 6 P. 753 - James Mather, et al. - 1/2 shares - 2250 Ac.
 B. 7 P. 147 - Robert Dupont - 1 share - 500 Ac.
 B. 7 P. 152 - John Dupont - 1 share - 500 Ac.
 B. 8 P. 36 - Elisha Parker - License to Alienate.
 B. 8 P. 36 - Stephen Chase, Jr. -
 B. 8 P. 37 - James Mather -
 B. 8 P. 39 - Samuel Starr, et al. -
 B. 8 P. 108 - Elisha Freeman -
 B. 8 P. 120 - Benjamin Phelps - 1 share - 666 Ac.
 B. 8 P. 130 - Joseph Garham - 1 share - 606 Ac. - Escheated.
 B. 8 P. 231 - B. 9 P. 246 - Hon. Jonathan Belcher - 1 share - 666 2/3 Ac.
 B. 10 P. 109 - B. 11 P. 67 - Nathan Longfellow - 1 share - 666 Ac.
 B. 12 P. 160 - John Chipman - 1 share - 500 Ac.
 B. 20 P. 4X - Benjamin Bricher - Various Lots.



Joins Sheet 62

Joins Sheet 53

