

# Nova Scotia Department of Natural Resources

## Ecological Land Classification (2015 Version)



1: 775 000

6° Universal Transverse Mercator (UTM) Projection, Zone 20, North American Datum (NAD) 1983.

Ecological Land Classification data produced by the Nova Scotia Department of Natural Resources (NSDNR) Forestry Division.  
Base Data derived from the Nova Scotia Topographic Database (NSTDB),  
and Nova Scotia Hydrographic Network (NSHN).  
Annotation compiled from NSDNR, Forestry and Forest Protection  
Divisions and Service Nova Scotia & Municipal Relations,  
Nova Scotia Geomatics Centre data.  
Additional information derived from NSDNR,  
Geographic Information Systems (GIS) databases:  
Crown Land and Planning Secretariat.

© Crown Copyright, Province of Nova Scotia, 2017. All rights reserved.

New Brunswick

Prince  
Edward  
Island

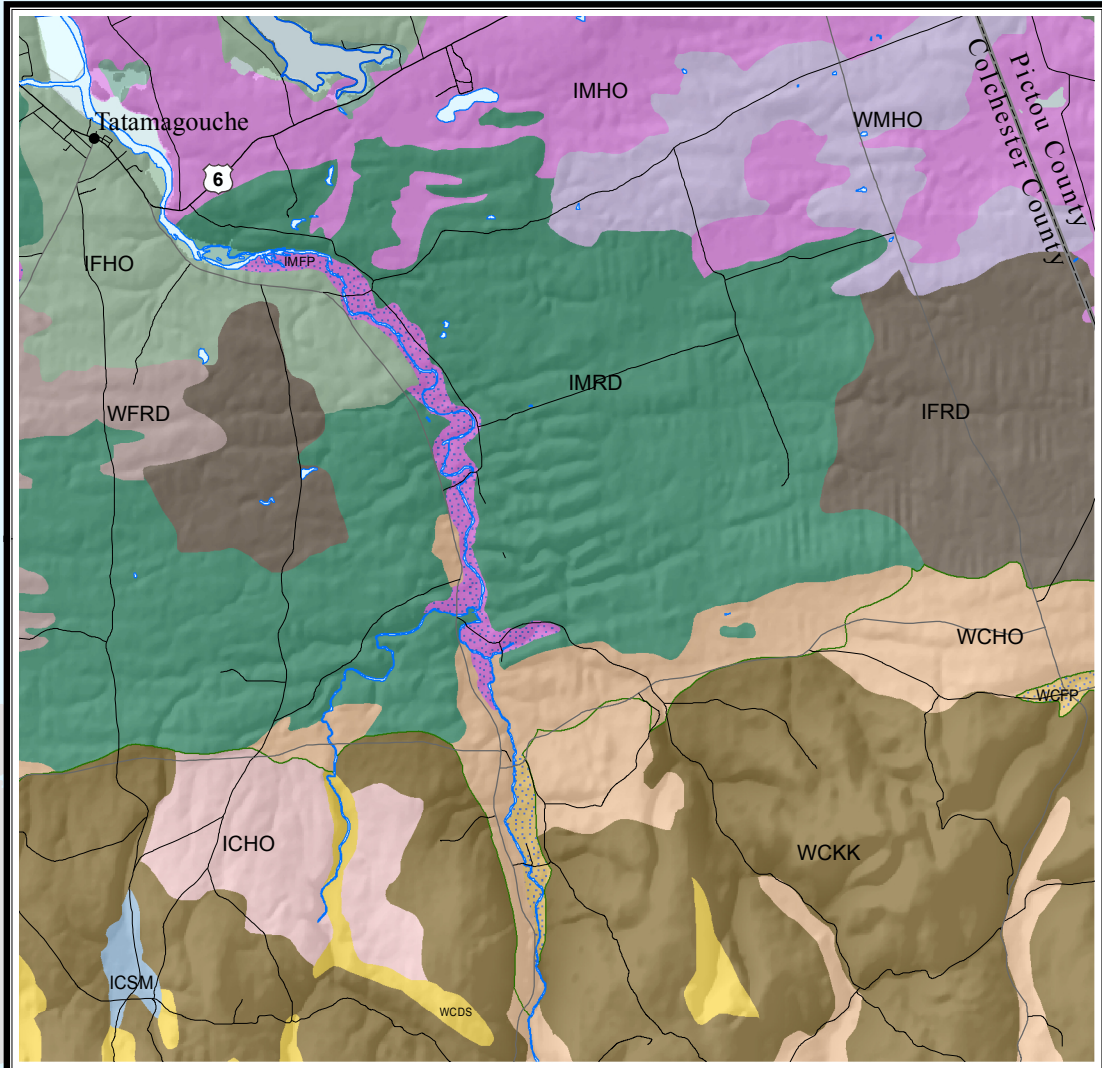
Northumberland Strait

ATLANTIC OCEAN

ATLANTIC OCEAN



The medium textured sandy loam hummocks and drumlins of the Claire ecodistrict (730) separate this ecodistrict from the coarse sandy loam hummocks of the South Mountain ecodistrict (720).



Aside from a significant difference in elevation the Northumberland Lowlands ecodistrict (530) is dominated by medium and fine textured hummocks/hills and ridged topography. Alternately the better drained Cobequid Hills ecodistrict (340) is dominated by coarse textured hills and hummocks.

- ICHO Imperfect/coarse/hummocky
- ICSM Imperfect/coarse/smooth or flat
- IFDM Imperfect/fine/drumlins or flutes
- IFHO Imperfect/fine/hummocky
- IFRD Imperfect/fine/ridged
- IMFP Imperfect/medium/flood plain
- IMHO Imperfect/medium/hummocky
- IMRD Imperfect/medium/ridged
- WCDS Well/coarse/steep slopes or canyons
- WCFR Well/coarse/flood plain
- WCHO Well/coarse/hummocky
- WCKK Well/coarse/hilly
- WFRD Well/fine/ridged
- WMHO Well/medium/hummocky
- XXMS Salt marsh
- Inland water

### Linear Features

- Ecodistrict Boundary
- Ecoregion Boundary
- Shoreline
- County Boundary
- Trans Canada Highway
- 100 Series Highway
- Arterial Highway
- Collector Highway

### Ecodistricts

- |   |  |   |                                    |
|---|--|---|------------------------------------|
| <b>Ecoregion: Northern Plateau</b>      | <b>Ecoregion: Eastern</b>                  | <b>Ecoregion: Valley and Central Lowlands</b> | <b>Ecoregion: Atlantic Coastal</b> |
| 100 Northern Plateau                    | 410 Rawdon \ Wittenburg Hills              | 610 Annapolis Valley                          | 810 Cape Breton Coastal            |
| <b>Ecoregion: Cape Breton Highlands</b> | 430 Eastern Granite Uplands                | 620 Minas Lowlands                            | 820 Eastern Shore                  |
| 210 Cape Breton Highlands               | 440 Eastern Interior                       | 630 Central Lowlands                          | 830 South Shore                    |
| 220 Victoria Lowlands                   | 450 Governor Lake                          | <b>Ecoregion: Western</b>                     | 840 Tusket Islands                 |
| <b>Ecoregion: Nova Scotia Uplands</b>   | <b>Ecoregion: Northumberland/Bras D'Or</b> | 710 Valley Slope                              | 850 Sable Island                   |
| 310 Cape Breton Hills                   | 510 Bras d'Or Lowlands                     | 720 South Mountain                            | <b>Ecoregion: Fundy Shore</b>      |
| 320 Inverness Lowlands                  | 520 St. Georges Bay                        | 730 Clare                                     | 910 Parrsboro Shore                |
| 330 Pictou Antigonish Highlands         | 530 Northumberland Lowlands                | 740 Lahave Drumlins                           | 920 North Mountain                 |
| 340 Cobequid Hills                      | 540 Cumberland Hills                       | 750 Rossignol                                 |                                    |
| 350 Cobequid Slopes                     | 550 Cumberland Marshes                     | 760 Sable                                     |                                    |
| 360 Mulgrave Plateau                    | 560 Chignecto Ridges                       | 770 Western Barrens                           |                                    |
| 370 St. Marys River                     |  | 780 St. Margarets Bay                         |                                    |
| 380 Central Uplands                     |  |   |                                    |

