



# Insectary Notes

*January / February 2010*

## *From the Editor*

This issue is introducing the newly formed committee between Forest Health and Regional Services. The Forest Health Committee has already met once and some information on the structure of the committee and an update on the Forest Protection organization is included on pages 4 & 5.

Tanya Borgal has finished her work term with Forest Health. She stepped in and helped make our first NS Forest Health Conference a success. Before she left, she wrote an article for this issue going over the status of the "Dirty Dozen" . . . the 12 insects that are at the core of our yearly surveys. We wish Tanya well and thank her for her contributions to the newsletter and the Forest Health section.

'Til next time,

*Jacqui*

Editing . . . a Rewording Activity

## *Say What and Quotes . . .*

Nothing is worse than that moment during an argument when you realize you're wrong.

*There is great need for a sarcasm font.*

There's no worse feeling than that millisecond you're sure you are going to die after leaning your chair back a little too far.

*Map Quest really needs to start their directions on #5. I'm pretty sure I know how to get out of my neighborhood.*

### **Contents** (click on article title for navigation)

<u>Provincial Entomologist's Overview</u> . . . . .	Page 2
<u>And How Cold Was It?</u> . . . . .	Page 3
<u>Provincial Forest Health Committee</u> . . . . .	Page 4
The Results Are In	
<u>Balsam Gall Midge</u> . . . . .	Page 6
<u>Balsam Twig Aphid</u> . . . . .	Page 7
<u>Balsam Woolly Adelgid</u> . . . . .	Page 8
<u>Spruce Budworm L-2</u> . . . . .	Page 9
<u>The Last Laugh</u> . . . . .	Page 10



## **Provincial Entomologist's Overview . . . . . What's the Buzz?**

Tanya Borgal

[Back to page 1](#)

Here at Forest Health, Department of Natural Resources, we have what's referred to as the "dirty dozen." This refers to the group of 12 insects that are surveyed and monitored each year by the Department of Natural Resources. There are different ways to survey for insects. Pheromones, a chemical used to attract the opposite sex for mating, are used in monitoring for male moths. Another way to detect the presence of an insect is by taking branch samples from the insect host plant, and aerial or ground surveys looking for signs and symptoms. The results are in, so here's what we found from our 2009 surveys:

- **Spruce Budworm** - surveys showed that the number of male moths caught in each trap were low for the Central and Eastern Regions of the province. There were no pheromone traps set in the western end of the province. Branch samples were taken at each site where a pheromone trap was set in order to survey for overwintering larvae. No second instar larvae were found from the branch samples.
- **Blackheaded Budworm** and **Balsam Fir Sawfly** - branch samples show that there aren't many of these insects around. Some overwintering balsam fir sawfly eggs were found on samples collected in Guysborough County.
- **Jack Pine Budworm** - aerial surveys showed that 861 hectares of forest showed light defoliation caused by this hungry insect munching on white pine in Queens County. They decided not to return to their old chow down sites; previously defoliated sites were relatively untouched.
- **Brown Spruce Longhorn Beetle** - was found in three new counties, outside the containment area set by the Canadian Food Inspection Agency. These include: Kings, Lunenburg, and Victoria.
- **Spruce Beetle** - is hungry for white spruce. This beetle is widespread and continues to cause considerable damage and mortality. Spruce beetle has been found residing in two of the provincial parks, Cape Chignecto and Lake Abraham in Liscomb Game Sanctuary, and in the Mabou Highlands in Cape Breton Highland.
- **Gypsy Moth** - in the regulated area, the number of male moths caught is down from captures in 2008. In the unregulated area, New Glasgow, numbers continue to climb.
- **Pale Winged Grey** - from ground surveys, this insect was found munching on eastern hemlock within Kejimikujik National Park.
- **Balsam Woolly Adelgid** - this tiny insect can be found province-wide and is of concern to the Christmas tree industry because it causes gouting on the branches . . . not so nice to see on your Christmas tree!!! This season, there will be permanent sample plots set based on temperature and ecoregion. Information taken at each of these sites will help us monitor the insect.
- **Hemlock Looper** - pheromone traps showed low populations of moths across the province
- **Pine Shoot Beetle** - no pine shoot beetle were collected in any of the traps placed in Nova Scotia. This survey will be done every other year in the future.
- **Whitemarked Tussock Moth** - results from the overwintering survey showed very little signs of significant damage from WMTM.

# AND JUST HOW GOLD WAS IT?

Keith Moore and Jacqui Gordon

[Back to page 1](#)

Table 1. NS DEPT. OF TRANSPORTATION AND INFRASTRUCTURE RENEWAL WEATHER STATION DATA.  
COLDEST RECORDED TEMPERATURES (°C) FOR WINTER\* 2004 TO WINTER\* 2010.

Location	Winter* 04	Winter* 05	Winter* 06	Winter* 07	Winter* 08	Winter* 09	Winter * 10
North Sydney	-19	-18	-18	-19	-23	-20	-14
Canso Causeway	n/a**	-17	-17	-18	-19	-22	-17
Trafalgar	n/a**	n/a**	-15	-26	-27	-32	-27
Upper Mt. Thom	-28	-23	-21	-24	-23	-27	-23
Marshy Hope	-26	-25	-24	-24	-29	-30	-24
Springhill	-39	-35	-25	-30	-31	-29	-27
Yarmouth	-20	-18	-14	-15	-13	-15	-16
Granite Village	n/a**	n/a**	n/a**	-20	-16	-22	-16
Trunk 12	-25	-25	-20	-23	-23	-27	-23
Kingston	-24	-24	-20	-20	-23	-22	-22
Mt. Uniacke	-27	-25	-20	-22	-24	-26	-22
Blackville, NB	n/a**	n/a**	n/a**	-31	-31	-34	-29

\* *Winter = mid-December, previous year, to mid-March.*

\*\* *n/a indicates that data was not available from this tower because it was a newly established tower.*

Should we call this the winter that never happened? The winter that never was? Think up something poetic and send it along. We'll publish it in the next newsletter.

The cold snap (and I believe that "SNAP" is the right word . . . it was over in a snap) that hit on 1 to 3 February was all we got. We kept expecting more cold weather later in February but it never arrived.

How will this affect the season of bloodsucking critters (mosquitos, black flies, ticks)? Most will be cosyng up to us earlier this year in search of that tasty first blood meal of the season.

Those on the look out for balsam twig aphid will have to be looking a bit earlier this year to catch that control window. And since most areas didn't get the cold temperatures needed to knock back the balsam woolly adelgid, it may be troublesome this year.

## Provincial Forest Health Committee

Jim Rudderham

This winter a new committee was formed. It is hoped that the committee will allow for input, discussion and advice in the challenges we deal with in Forest Health.

The terms of reference of this committee are:

- Provide a forum for reviewing and analyzing Forest Health issues.
- Provide input on Forest Health policy.
- Initiate the development of a Forest Health Policy Manual.
- Improve communication between Forest Health and Regional Services staff.
- Provide review and input of Forest Health program commitments for Regional Services work plan updates.

The committee consists of the following:

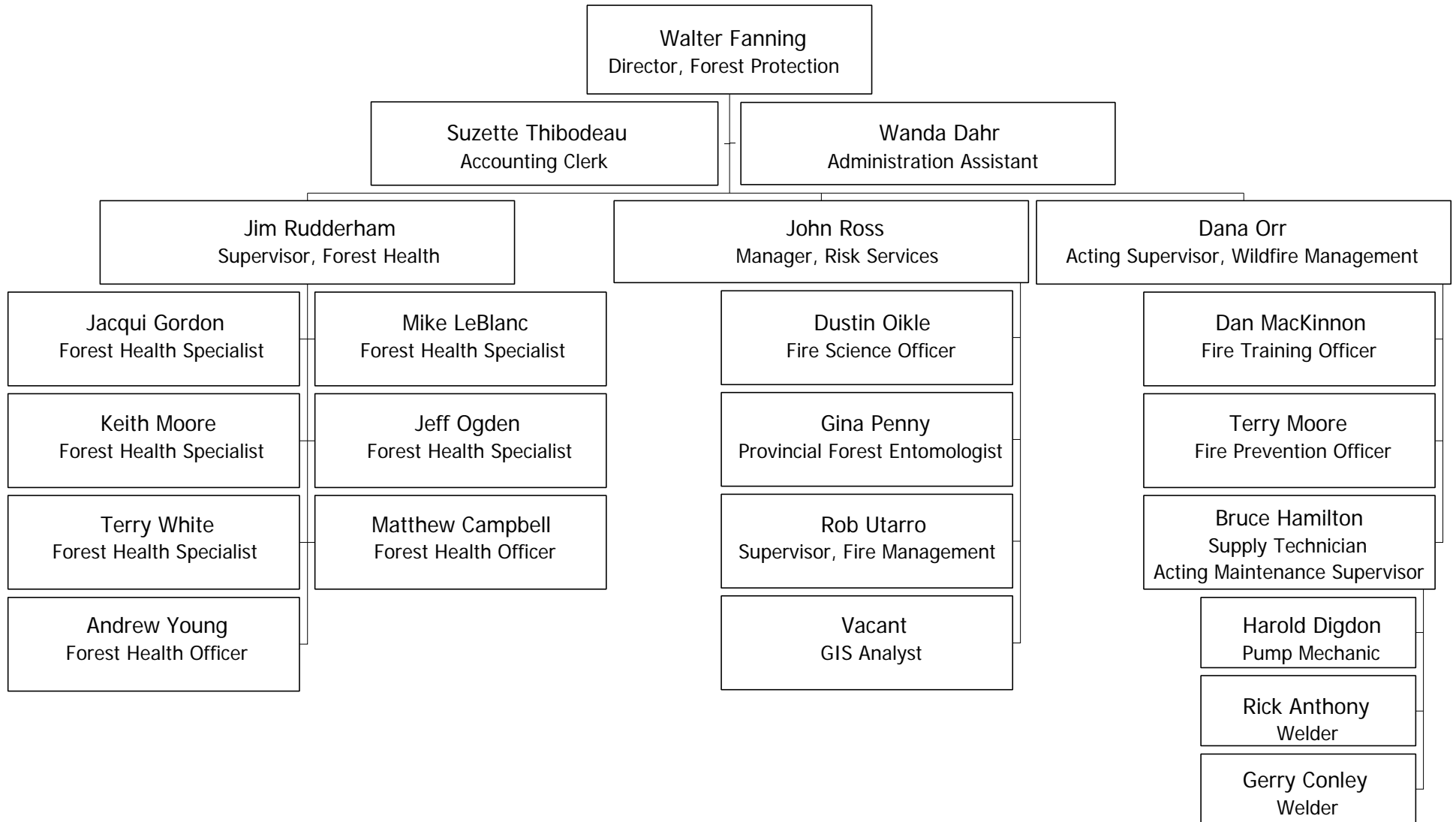
Walter Fanning	Director, Forest Protection
Jim Rudderham	Supervisor, Forest Health
Lloyd Burke	District Supervisor - Representing Eastern Region
Al Blinn	Area Supervisor - Representing Central Region
Pat Murphy	Area Supervisor - Representing Western Region

We have met once already and from the interest and ideas expressed, I am sure that this committee will become a valuable part of the Forest Health program.

One of the issues brought up at our first meeting was the need to highlight the changes that have come about in the organization of the Forest Protection Division. For your information, we are organized along the following lines (see next page) . . .

# Forest Protection Division

[Back to page 1](#)



## The Results Are In!

Here are some of the mapped results of the 2009/10 survey season.

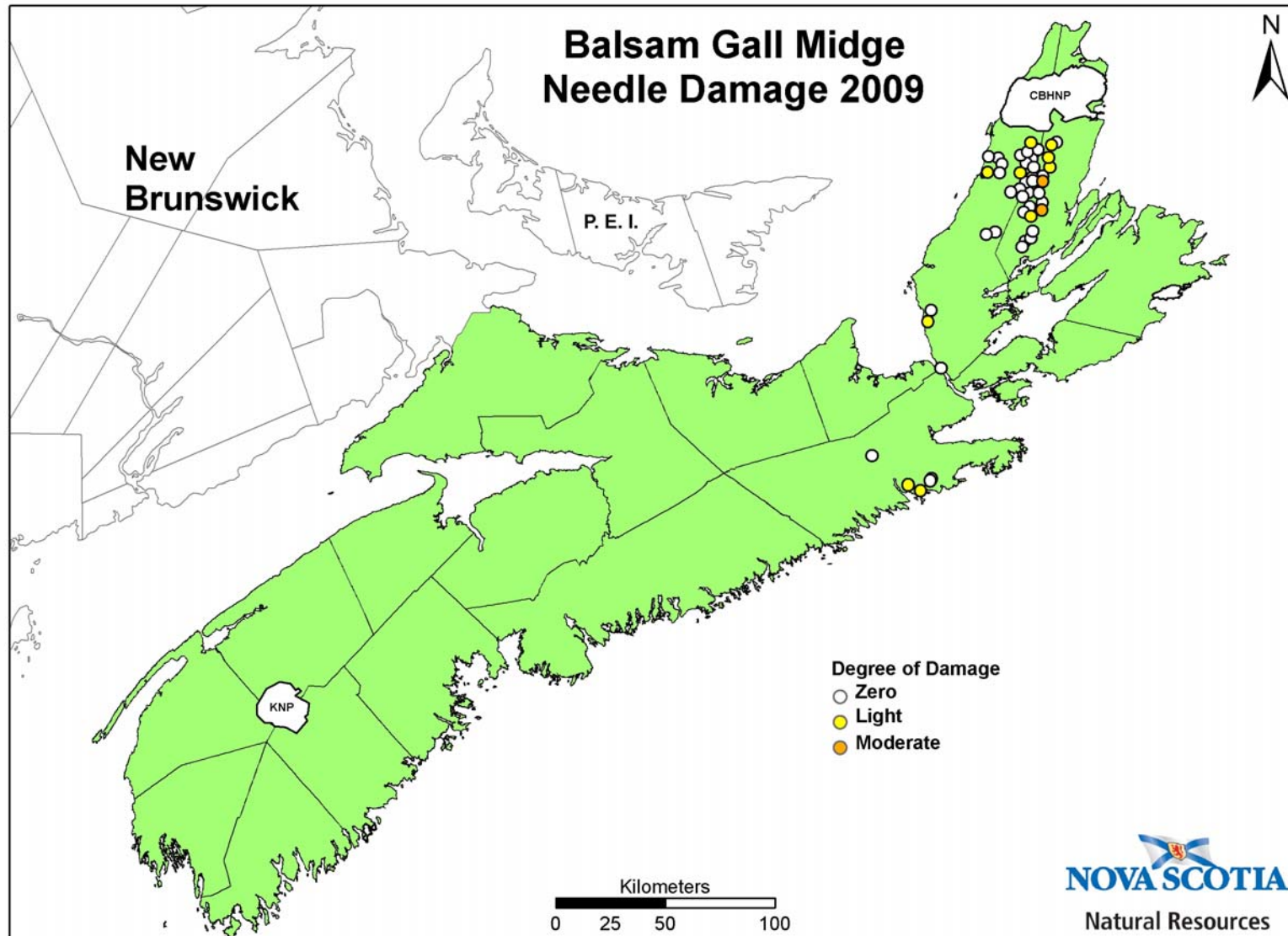


Figure 1. Balsam gall midge needles damage, 2009.

The information on this map may have come from a variety of government and non government sources and is subject to change without notice. The Nova Scotia Department of Natural Resources accepts no liability for errors, deficiencies, or faults on this map.

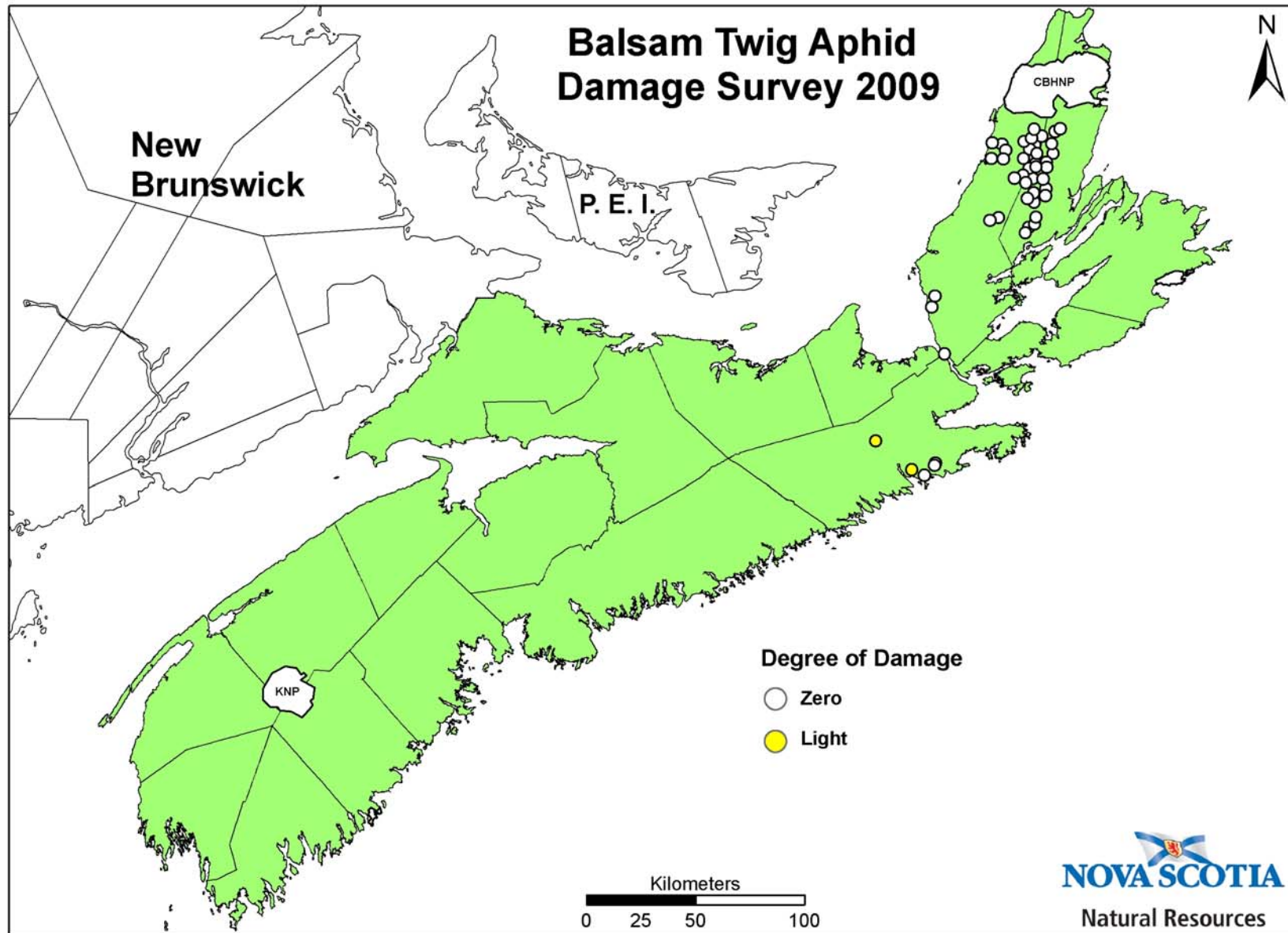


Figure 2. Balsam twig aphid damage survey, 2009.

The information on this map may have come from a variety of government and non government sources and is subject to change without notice. The Nova Scotia Department of Natural Resources accepts no liability for errors, deficiencies, or faults on this map.



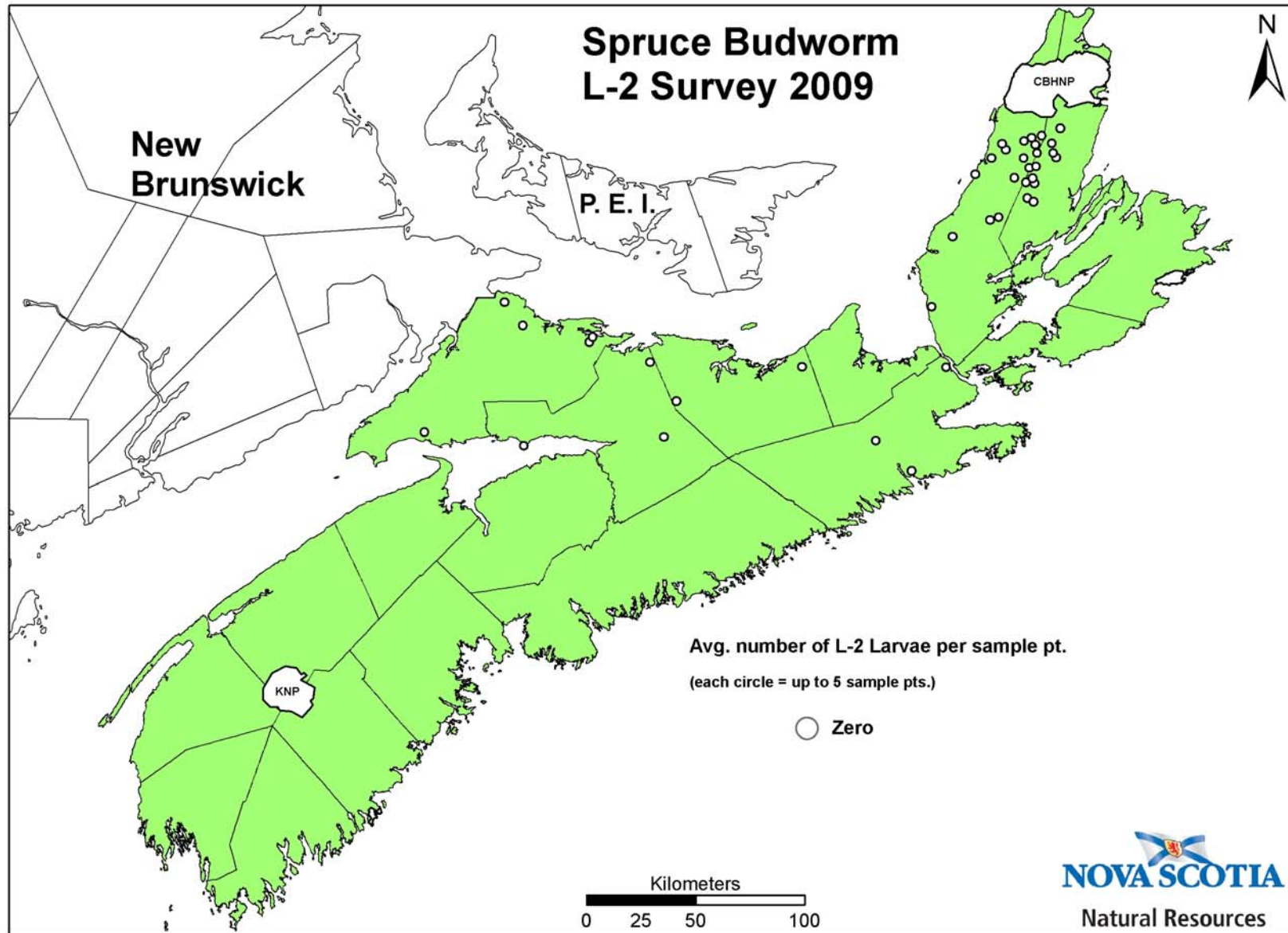
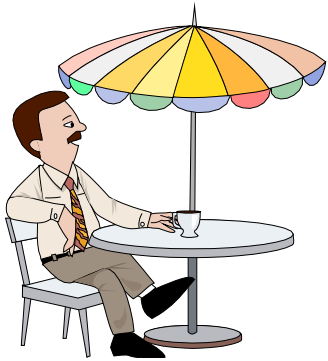


Figure 4. Spruce budworm L-2 survey, 2009.

The information on this map may have come from a variety of government and non government sources and is subject to change without notice. The Nova Scotia Department of Natural Resources accepts no liability for errors, deficiencies, or faults on this map.

## THE LAST LAUGH ...



A Minnesota couple decided to vacation to Florida during the winter. They planned to stay at the very same hotel where they spent their honeymoon 20 years earlier. Because of hectic schedules, it was difficult to coordinate their travel schedules. So, the husband left Minnesota and flew to Florida on Thursday. His wife would fly down the following day.

The husband checked into the hotel. There was a computer in his room, so he decided to send an e-mail to his wife. However, he accidentally left out one letter in her e-mail address, and without realizing his error, he sent the e-mail.

Meanwhile . . . somewhere in Houston, a widow had just returned home from her husband's funeral. He was a minister of many years who was called home to glory following a sudden heart attack. The widow decided to check her e-mail, expecting messages from relatives and friends. After reading the first message, she fainted.

The widow's son rushed into the room, found his mother on the floor, and saw the computer screen which read:

To: My Loving Wife

Subject: I've Arrived

Date: 16 May 2003

I know you're surprised to hear from me. They have computers here now and you are allowed to send e-mails to your loved ones. I've just arrived and have been checked in. I see that everything has been prepared for your arrival tomorrow. Looking forward to seeing you then! Hope your journey is not as uneventful as mine was.

P.S. Sure is hot down here!

---

A preacher was completing a temperance sermon; with great expression he said, "If I had all the beer in the world, I'd take it and throw it into the river."

With even greater emphasis he said, "And if I had all the wine in the world, I'd take it and throw it into the river."

And then finally, he said, "And if I had all the whiskey in the world, I'd take it and throw it into the river."  
He sat down.

The song leader then stood very cautiously and announced with a smile, "For our closing song, let us sing Hymn # 365: "Shall We Gather at the River."

