

Royal



Gazette

Part II Regulations under the Regulations Act

Printed by the Queen's Printer

Halifax, Nova Scotia

Vol. 35, No. 22

November 4, 2011

Contents

Act	Reg. No.	Page
Assessment Act		
Quorum for a Regional Assessment Appeal Court Regulations	290/2011	834
Dairy Industry Act		
Bulk Haulage Regulations–amendment	294/2011	844
Municipal Government Act		
Polling Districts and Number of Councillors Order for Cape Breton Regional Municipality	292/2011	837
Petroleum Products Pricing Act		
Prescribed Petroleum Products Prices	291/2011	835
Prescribed Petroleum Products Prices	295/2011	845
Wilderness Areas Protection Act		
Five Bridge Lakes Wilderness Area Designation	293/2011	842

In force date of regulations: As of March 4, 2005*, the date a regulation comes into force is determined by subsection 3(6) of the *Regulations Act*. The date a regulation is made, the date a regulation is approved, the date a regulation is filed and any date specified in a regulation are important to determine when the regulation is in force.

*Date that subsections 3(6) and (7) and Sections 11 and 13 of the *Regulations Act* and amendments to the *Regulations Act* made by Chapter 46 of the Acts of 2004 were proclaimed in force.

N.S. Reg. 290/2011

Made: October 12, 2011

Filed: October 14, 2011

Quorum for a Regional Assessment Appeal Court Regulations

Order dated October 12, 2011
made by the Minister of Service Nova Scotia and Municipal Relations
pursuant to clause 59(b) and Section 180 of the *Assessment Act*

**In the Matter of Sections 59 and 180 of Chapter 23 of the
Revised Statutes of Nova Scotia, 1989, the *Assessment Act***

- and -

**In the Matter of an Order Respecting
the quorum for a regional assessment appeal court
made by the Minister of Service Nova Scotia and Municipal Relations
pursuant to subsection [clause] 59[(b)] of the *Assessment Act***

Order

I, John MacDonell, Minister of Service Nova Scotia and Municipal Relations for the Province of Nova Scotia, pursuant to clause 59(b) of Chapter 23 of the Revised Statutes of Nova Scotia, 1989, the *Assessment Act*, hereby order and direct that one member of any regional assessment appeal court shall constitute a quorum for the purpose of Section 59 of the *Assessment Act*.

Dated and made at Halifax, in the Halifax Regional Municipality, Nova Scotia, October 12, 2011 and effective on or [*sic*] after December 1st, 2011.

Sgd.: *John MacDonell*
Honourable John MacDonell
Minister of Service Nova Scotia and Municipal Relations

N.S. Reg. 291/2011

Made: October 13, 2011

Filed: October 14, 2011

Prescribed Petroleum Products Prices

Order dated October 13, 2011
made by the Nova Scotia Utility and Review Board
pursuant to Section 14 of the *Petroleum Products Pricing Act*
and Sections 16 to 19 of the *Petroleum Products Pricing Regulations*

Order**NSUARB-GAS-W-11-43****In the Matter of the *Petroleum Products Pricing Act*****- and -****In the Matter of Prescribing Prices for Petroleum Products
pursuant to Section 14 of the *Petroleum Products Pricing Act* and
Sections 16 to 19 of the *Petroleum Products Pricing Regulations*****Before:** Roland A. Deveau, Q.C., Acting Vice-Chair**Order**

Whereas the purpose of the *Petroleum Products Pricing Regulations* is to ensure just and reasonable prices for specified petroleum products taking into consideration the objectives of preserving the availability of such products in rural areas, stabilizing prices of such products and minimizing the variances in prices of such products across the Province;

And whereas the Nova Scotia Utility and Review Board (“Board”) considered the manner in which it would proceed to set petroleum prices in its decision, 2006 NSUARB 108, issued on October 16, 2006;

And whereas the average of the average of the daily high and low reported product prices (in Canadian cents) for the week ended October 12, 2011, are:

Grade 1 Regular gasoline	76.8¢ per litre
Ultra-low-sulfur diesel oil	79.7¢ per litre

Now therefore the Board prescribes the benchmark prices for petroleum products to be:

Gasoline:	
Grade 1	76.8¢ per litre
Grade 2	79.8¢ per litre
Grade 3	82.8¢ per litre
Ultra-low-sulfur diesel oil	79.7¢ per litre

And now therefore the Board has determined, based on historical data regarding price changes and to achieve revenue neutrality, it is appropriate to apply, and the Board so orders, forward averaging corrections of:

Gasoline:	plus 1.0¢ per litre
Ultra-low-sulfur diesel oil:	plus 0.5¢ per litre

And whereas a winter blending adjustment of plus 0.5¢ per litre is required for ultra-low-sulfur diesel oil;

And now therefore the Board prescribes the prices for petroleum products as set forth in Schedule “A” effective on and after 12:01 a.m., October 14, 2011.

Dated at Halifax, Nova Scotia, this 13th day of October, 2011.

Sgd: *Elaine Wagner*
Clerk of the Board

Schedule "A"

**Prices Prescribed for Petroleum Products
under the *Petroleum Products Pricing Act* and the
Petroleum Products Pricing Regulations
effective on and after 12:01 a.m. on October 14, 2011**

Nova Scotia Petroleum Price Schedule								
Petroleum Prices in Cents/Litre					Self-Service Pump Prices		Full-Service Pump Prices	
(Pump Prices includes 15% HST)								
	Base Wholesale Price	Fed. Excise Tax	Prov. Tax	Wholesale Selling Price	Min	Max	Min	Max
Zone 1								
Regular Unleaded	84.1	10.0	15.5	109.6	130.6	132.4	130.6	999.9
Mid-Grade Unleaded	87.1	10.0	15.5	112.6	134.1	135.8	134.1	999.9
Premium Unleaded	90.1	10.0	15.5	115.6	137.5	139.3	137.5	999.9
Ultra-Low-Sulfur Diesel	87.0	4.0	15.4	106.4	127.0	128.7	127.0	999.9
Zone 2								
Regular Unleaded	84.5	10.0	15.5	110.0	131.1	132.8	131.1	999.9
Mid-Grade Unleaded	87.5	10.0	15.5	113.0	134.6	136.3	134.6	999.9
Premium Unleaded	90.5	10.0	15.5	116.0	138.0	139.7	138.0	999.9
Ultra-Low-Sulfur Diesel	87.4	4.0	15.4	106.8	127.4	129.1	127.4	999.9
Zone 3								
Regular Unleaded	85.0	10.0	15.5	110.5	131.7	133.4	131.7	999.9
Mid-Grade Unleaded	88.0	10.0	15.5	113.5	135.1	136.9	135.1	999.9
Premium Unleaded	91.0	10.0	15.5	116.5	138.6	140.3	138.6	999.9
Ultra-Low-Sulfur Diesel	87.9	4.0	15.4	107.3	128.0	129.7	128.0	999.9
Zone 4								
Regular Unleaded	85.0	10.0	15.5	110.5	131.7	133.4	131.7	999.9
Mid-Grade Unleaded	88.0	10.0	15.5	113.5	135.1	136.9	135.1	999.9
Premium Unleaded	91.0	10.0	15.5	116.5	138.6	140.3	138.6	999.9
Ultra-Low-Sulfur Diesel	87.9	4.0	15.4	107.3	128.0	129.7	128.0	999.9
Zone 5								
Regular Unleaded	85.0	10.0	15.5	110.5	131.7	133.4	131.7	999.9
Mid-Grade Unleaded	88.0	10.0	15.5	113.5	135.1	136.9	135.1	999.9
Premium Unleaded	91.0	10.0	15.5	116.5	138.6	140.3	138.6	999.9
Ultra-Low-Sulfur Diesel	87.9	4.0	15.4	107.3	128.0	129.7	128.0	999.9
Zone 6								
Regular Unleaded	85.8	10.0	15.5	111.3	132.6	134.3	132.6	999.9
Mid-Grade Unleaded	88.8	10.0	15.5	114.3	136.0	137.8	136.0	999.9
Premium Unleaded	91.8	10.0	15.5	117.3	139.5	141.2	139.5	999.9
Ultra-Low-Sulfur Diesel	88.7	4.0	15.4	108.1	128.9	130.6	128.9	999.9

N.S. Reg. 292/2011

Made: October 17, 2011

Filed: October 18, 2011

Polling Districts and Number of Councillors Order
for Cape Breton Regional MunicipalityOrder dated October 17, 2011
made by the Nova Scotia Utility and Review Board
pursuant to Sections 368 and 369 of the *Municipal Government Act***ORDER****NSUARB-MB-10-05****Nova Scotia Utility and Review Board
In the matter of the *Municipal Government Act*****- and -****In the Matter of an Application by Cape Breton Regional Municipality
to determine the boundaries of the polling districts****Before:** Roland A. Deveau, Q.C., Acting Vice-Chair
David J. Almon, LL.B., Member
Murray E. Doehler, CA, P.Eng., Member**Amended Order**

An Application having been made by the Cape Breton Regional Municipality pursuant to s. 368 and s. 369 of the *Municipal Government Act* and the Board having issued decisions on July 18, 2011 and September 29, 2011;

Whereas the Board approved the new Polling Districts A to L, which are herein referred to numerically as Polling Districts 1 to 12, inclusive;

It is hereby ordered that the Application is approved as follows:

1. The number of councillors and polling districts is reduced from 16 to 12;
2. The boundaries of the new Polling Districts 1 to 12, inclusive, are approved; and
3. The descriptions of all polling districts are set out in Schedule "A", attached to and forming part of this Order;

And it is further ordered that all provisions of the *Municipal Government Act* and the *Municipal Elections Act* and any other acts of the Province of Nova Scotia applying to the preparation for and holding of the regular election of councillors of the Municipality in the year 2012 will be complied with as if the above noted changes had been made on the first day of March, 2012, but for all other purposes, such changes shall take effect on the first day of the first meeting of the Council after the election of councillors for the year 2012.

Dated at Halifax, Nova Scotia this 17th day of October, 2011.

Sgd.: *Elaine Wagner*
Clerk of the Board

Schedule "A"**District 1**

This District has a population of 10,017 and an area of 28 square kilometers.

It includes:

- the community of Sydney Mines plus the neighbourhood of Tobin Road in North Sydney and the communities of Florence, Little Pond, and Alder Point; and
- the neighbourhood of Tobin Road includes the public street/road named Tobin Road beginning at its intersection with the Trans-Canada Highway eastward up to and including 106 Tobin Road, and includes all streets and roads intersecting it between the Highway and 106 Tobin Road.

District 2

This District has a population of 9,068 and an area of 115 square kilometers.

It includes:

- most of the community of North Sydney, all of the communities in that part of Boularderie Island within the Cape Breton Regional Municipality and the communities in between; and
- more specifically, it includes the community of North Sydney, with the exception of the neighbourhood of Tobin Road as described under District B [1], plus the communities of Little Bras D'Or, Bras D'Or, Mill Creek, Point Aconi, Millville, Groves Point, Hillside Boularderie, Southside Boularderie, and Dalem Lake.

District 3

This District has a population of 6,563 and an area of 540 square kilometers.

It includes:

- all of the communities southwest of the community of North Sydney on the peninsula bounded by St. Andrews Channel and East Bay of the Bras D'Or Lake and the southern boundaries of the communities of the Point Edward Peninsula; and
- this includes the communities of Upper North Sydney, Leitches Creek, Balls [C]reek, Beechmont, Frenchvale, Upper Leitches Creek, Scotch Lake, Georges River, Long Island, Barrachois, Ironville, Boisdale, Beaver Cove, Shenacadie, Big Beach, Christmas Island, Grand Narrows, Pipers Cove, Benacadie, Castle Bay, Eskasoni, Islandview, Northside East Bay, MacAdams Lake, Blacketts Lake and Coxheath.

District 4

This District has a population of 8,578 and an area of 54 square kilometers.

It includes:

- the communities on the Point Edward Peninsula (i.e., Point Edward, Edwardsville, Westmount, North West Arm);
- that part of the community of Coxheath northwest of the properties fronting along the Mountain Road up to the boundary it shares with Westmount, beginning with civic addresses 704 and 707 Coxheath Road;
- the community of Sydney River; and
- that part of the community of Prime Brook north of Highway 125.

District 5

This District has a population of 8,961 and an area of 8 square kilometers.

It includes:

- the North End/downtown Sydney peninsula bounded by Sydney Harbour to the mouth of the Wash Brook (a.k.a. Muggah Creek), along the Wash Brook (a.k.a. Muggah Creek) to Brookland Street, along the center line of Brookland Street to its intersection with the railroad, southwest along the railroad to Wentworth Park and through the Park to Sydney Harbour;
- that part of the community of Sydney southwest of George Street, south of Wentworth Park, east of Sydney Harbour, and sharing a boundary with the communities of Sydney River, Prime Brook, the First Nations community of Membertou, and the community of Mira Road;
- that part of the community of Mira Road northwest of Highway 125;
- the First Nations community of Membertou; and
- the sector of Cottage Road from its intersection with Canso Drive until it becomes Edgar Street, including all streets intersecting with this sector of Cottage Road (i.e., from Canso Drive up to and including Donna Drive).

District 6

This District has a population of 9,123 and an area of 6 square kilometers.

It is comprised of parts of the Sydney neighbourhoods of Ashby, the South End and the downtown neighbourhood and a part of the community of Grand Lake Road. It is bounded by:

- highway 125 to the east to its intersection with Grand Lake Road (i.e., the Road not the community);
- then along the center line of Grand Lake Road to Welton Street;
- then along the center line of Welton Street to Prince Street;
- then along the center line of Prince Street to the Wash Brook (a.k.a. Muggah Creek);
- then along the Wash Brook to Brookland Street;
- then along the center line of Brookland Street to its intersection with the railroad;
- then along the railroad to its intersection with George Street;
- then along the center line of George Street to the boundary shared with the community of Mira Road;
- then along the boundary shared with the community of Mira Road up to and including the boundary shared with the property at 662 Cottage Road;
- then along the southern boundary of this property to Cottage Road;
- then across Cottage Road to its intersection with the southwest corner of 682 Cottage Road;
- then along the northwest boundary of 682 Cottage Road to its rear property boundary;
- then in a north easterly direction to a brook within the Bailie Ard land assembly; and
- then following upstream along that brook to Highway 125.

District 7

This District has a population of 7,081 and a total area of 1,021 square kilometers.

It includes:

- the communities of Howie Center, Sydney Forks, Portage, East Bay, Ben Eoin, St. Andrews Channel, Big Pond, Big Pond Center, Middle Cape, Irish Vale, Irish Cove, Enon, Grand Mira South, Upper Grand Mira, Grand Mira South, Gabarus Lake, Gabarus, French Road, Rock Elm, Huntington, Sandfield, Juniper Mountain, Marion Bridge, Caribou Marsh, Dutch Brook Mira Road, and that part of the community of Prime Brook south of Highway 125.

District 8

This District has a population of 7,178 and an area of 550 square kilometers. It extends from the Glace Bay neighbourhood of Caledonia along the east coast to Louisbourg.

It includes:

- that sector of Dominion Street in the community of Glace Bay between its intersection with Highland Street east to its intersection with the railway right-of-way and all streets both north and south of it along this sector that either directly intersect it, or can only be accessed via a Street intersecting it along this sector;
- the sector of Brookside Street in the community of Glace Bay south of its intersection with Lake Road and all streets on either side of this sector of Brookside Street that either directly intersect it, or can only be accessed via a Street intersecting it along this sector; and
- the communities of Tower Road, Port Caledonia, Donkin, Port Morien, Birch Grove, Black Brook South Head, Homeville, Broughton, Round Island, Mira Gut, Albert Bridge, Catalone Gut, Catalone, Bateston, Main-a-Dieu, Little Lorraine, and Louisbourg.

District 9

This District has a population of 9,032 and an area of 35 square kilometers.

It includes:

- that part of the community of Glace Bay south of Main Street from the Harbour to its intersection with Wallace Road;
- south of Beechwood Court;
- south of 286 Phalen Road;
- east of its boundary shared with the community of Reserve Mines (i.e., east of 2434 Sydney Road, where Wilson Road becomes Dominion Street at the MacLeod Road intersection);
- that sector of Dominion Street from its intersection with MacLeod Road east to its intersection with Highland Street, and the Steeles Hill neighbourhood south of it;
- all of Highland Street and the streets north of Ninian Street west of the railway right-of-way;
- Dominion Street east of its intersection with the railway right-of-way to its intersection with Brookside Street;
- all of Brookside Street north of its intersection with Lake Road;
- all of the streets north of Lake Road and west and north of the railway right-of-way west and north of the Lake Road to the shore of Big Glace Bay Lake; and

- then along the shore of Big Glace Bay Lake and along the shore of the Atlantic Ocean to the point where Main Street meets the Harbour.

District 10

This District has a population of 9,446 and an area of 30 square kilometers.

It includes:

- the communities of Gardiner Mines and Dominion;
- that part of the community of Reserve Mines north of Haulage Road and north of 195 Main Street, including Centerville Street, Official Row, Atlantic Drive, Holland Street, Poland Street, Nicholson Drive, Belgium Street, Cross Street, and Neville Street;
- the Bridgeport, Number 2/Hub, and Sterling neighbourhoods of the community of Glace Bay;
- the sector of Phalen Road from its intersection with Beechwood Drive (beginning with 286 Phalen Road) north to its intersection with Main Street;
- all of Beechwood Drive and Beechwood Court;
- Deanna Drive and O'Neil's Lane;
- the sector of Main Street with the address ranges 974 up to and including 1130 and 955 up to and including 1115;
- all of the Central Area neighbourhood of Glace Bay with the exception of the part south of the center line of Main Street; and
- that part of the Downtown area neighbourhood north of the center line of Main Street.

District 11

This District has a population of 10,069 and an area of 33 square kilometers.

It includes:

- the communities of New Waterford, Scotchtown, River Ryan, Lingan, and New Victoria.

District 12

This District has a population of 7,731 and an area of 120 square kilometers.

It includes:

- the Sydney neighbourhood of Whitney Pier;
- that part of the Sydney neighbourhood of Ashby north of the center line of Prince and Welton Streets;
- that part of the Downtown Sydney neighbourhood bounded by the center line of Prince Street to Inglis Street, the center line of Inglis Street to Coke Ovens Brook, along Coke Ovens Brook to the Tar Ponds of the Wash Brook, and along the Tar Ponds/Wash Brook to Prince Street;
- the community of Grand Lake Road with the exception of the neighbourhood west of Highway 125, south of the public street/road called Grand Lake Road, east of Reeves Street, and north of Upper Prince Street; and
- the communities of South Bar, Victoria Mines, and Lingan Road.

N.S. Reg. 293/2011

Made: [unknown]

Approved: October 18, 2011

Filed: October 20, 2011

Five Bridge Lakes Wilderness Area Designation

Order in Council 2011-372 dated October 18, 2011
Designation made by the Minister of Environment
and approved by the Governor in Council
pursuant to subsection 11(3) of the *Wilderness Areas Protection Act*

The Governor in Council on the report and recommendation of the Minister of Environment and the Minister of Natural Resources dated September 28, 2011, and pursuant to subsection 11(3) of Chapter 27 of the Acts of 1998, the *Wilderness Areas Protection Act*, is pleased to approve the designation by the Minister of Environment of a wilderness area to be known as Five Bridge Lakes Wilderness Area, in the form set forth in Schedule "A" attached to and forming part of the report and recommendation, effective on and after the date a signed boundary description and plan for the area are deposited in the Provincial Crown Lands Record Centre, also known as the Crown Land Information Management Centre.

Schedule "A"

**In the matter of subsection 11(3) of Chapter 27 of the Acts of 1998,
the *Wilderness Areas Protection Act***

- and -

**In the matter of the designation of a wilderness area between
Highways 103 and 333 in the Halifax Regional Municipality,
to be known as Five Bridge Lakes Wilderness Area**

I, Sterling Belliveau, Minister of Environment for the Province of Nova Scotia, pursuant to subsection 11(3) of Chapter 27 of the Acts of 1998, the *Wilderness Areas Protection Act*, hereby designate an area of Crown land, to be known as Five Bridge Lakes Wilderness Area, the approximate boundary of which is shown on the map attached as Appendix "A".

The actual boundary of Five Bridge Lakes Wilderness Area shall be described and shown on a description and plan signed by the Director of Surveys and deposited in the Provincial Crown Lands Record Centre, also known as the Crown Land Information Management Centre, as required by subsection 11(3) of the Act, the signed description and plan forming part of this designation.

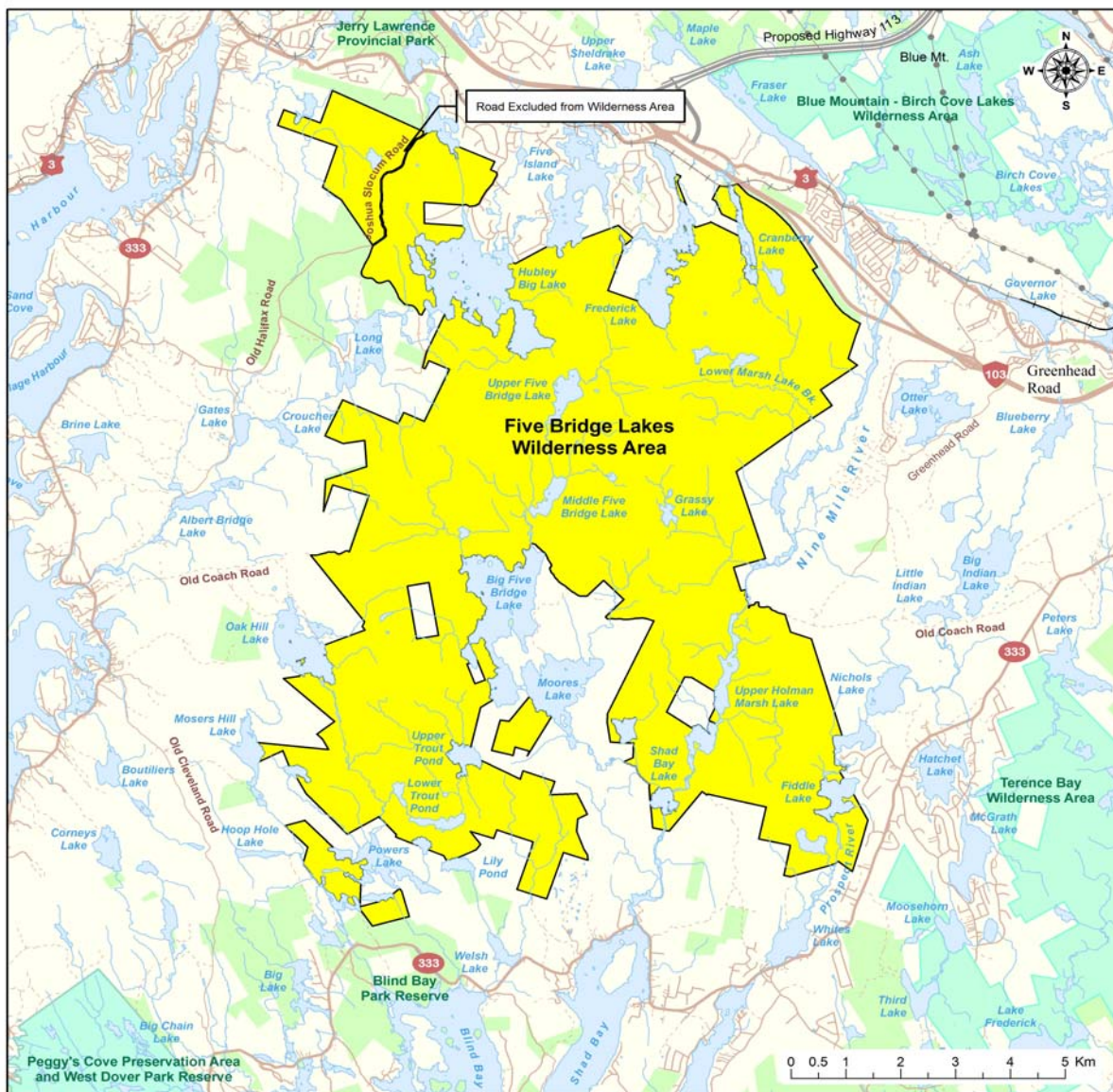
This designation is effective on and after the date it is approved by the Governor in Council and, pursuant to subsection 11(3) of the Act, the date the signed boundary description and plan are deposited in the Provincial Crown Lands Record Centre, also known as the Crown Land Information Management Centre.

Dated and made at Halifax Regional Municipality, Province of Nova Scotia, on _____, 2011. [sic]

Sgd.: *Sterling Belliveau*
Honourable Sterling Belliveau
Minister of Environment

Appendix "A"

Map showing Approximate Boundaries of Five Bridge Lakes Wilderness Area



Cumberland Kings Lunenburg
Hants HRM
Colchester Pictou
Map Extent
Halifax

Five Bridge Lakes Wilderness Area

- Five Bridge Lakes Wilderness Area
- Crown Land
- Other Existing Protected Areas

Map produced by the Protected Areas Branch of NS Environment, September 2011.

The information shown here was obtained courtesy of the NS Geomatics Centre (SNSMR) and the NS Department of Natural Resources.

© Crown Copyright, Province of Nova Scotia, 2011. All rights reserved.

This map is a geographic

N.S. Reg. 294/2011

Made: September 28, 2011

Approved: October 12, 2011

Filed: October 20, 2011

Bulk Haulage Regulations

Order dated October 12, 2011
made by the Dairy Farmers of Nova Scotia and
approved by the Natural Products Marketing Council
pursuant to clause 15(1)(b) of the *Dairy Industry Act*

Dairy Farmers of Nova Scotia

The Dairy Farmers of Nova Scotia, pursuant to clause 15(1)(b) of Chapter 24 of the Acts of 2000, the *Dairy Industry Act*, at a meeting held on September 28, 2011, amended the *Bulk Haulage Regulations*[, N.S. Reg. 23/2003,] in the manner set out attached to this certificate as Schedule "A", effective on and after November 1, 2011.

Dated and signed at Truro, Nova Scotia Oct. 17, 2011.

Sgd.: *Brian Cameron*
General Manager
Dairy Farmers of Nova Scotia

Approved by the Natural Products Marketing Council on October 12, 2011, and signed at Truro, Nova Scotia.

Sgd.: *E. A. Crouse*
Elizabeth A., Crouse, P. Ag.
General Manager
Natural Products Marketing Council

Schedule "A"

**Amendments to the *Bulk Haulage Regulations*
made by the Dairy Farmers of Nova Scotia
pursuant to clause 15(1)(b) of Chapter 24 of the Acts of 2000,
the *Dairy Industry Act***

Clause 7(a) of the *Bulk Haulage Regulations*[, N.S. Reg. 23/2003,] made by the Dairy Farmers of Nova Scotia and approved by the Natural Products Marketing Council on August 13, 2002, is amended by

- (a) striking out "\$2.350" directly opposite "Farmers Co-Operative Dairy Limited" and substituting "\$2.340;
- (b) striking out "\$3.540" directly opposite "Scotsburn Co-Operative Services Limited" and substituting "\$3.520;
- (c) striking out "\$1.730" directly opposite "Fisher Transport Limited" and substituting "\$1.720;
- (d) striking out "\$2.640" directly opposite "Winterthur Farm - Rudolph Burghardt" and substituting "\$2.630;
- (e) striking out "\$1.850" directly opposite "Cook's Dairy Farm Limited" and substituting "\$1.840.

N.S. Reg. 295/2011

Made: October 20, 2011

Filed: October 25, 2011

Prescribed Petroleum Products Prices

Order dated October 20, 2011
made by the Nova Scotia Utility and Review Board
pursuant to Section 14 of the *Petroleum Products Pricing Act*
and Sections 16 to 19 of the *Petroleum Products Pricing Regulations*

Order**NSUARB-GAS-W-11-44****In the Matter of the *Petroleum Products Pricing Act*****- and -****In the Matter of Prescribing Prices for Petroleum Products
pursuant to Section 14 of the *Petroleum Products Pricing Act* and
Sections 16 to 19 of the *Petroleum Products Pricing Regulations*****Before:** Roberta J. Clarke, Q.C., Member**Order**

Whereas the purpose of the *Petroleum Products Pricing Regulations* is to ensure just and reasonable prices for specified petroleum products taking into consideration the objectives of preserving the availability of such products in rural areas, stabilizing prices of such products and minimizing the variances in prices of such products across the Province;

And whereas the Nova Scotia Utility and Review Board (“Board”) considered the manner in which it would proceed to set petroleum prices in its decision, 2006 NSUARB 108, issued on October 16, 2006;

And whereas the average of the average of the daily high and low reported product prices (in Canadian cents) for the week ended October 19, 2011, are:

Grade 1 Regular gasoline	75.5¢ per litre
Ultra-low-sulfur diesel oil	81.8¢ per litre

Now therefore the Board prescribes the benchmark prices for petroleum products to be:

Gasoline:	
Grade 1	75.5¢ per litre
Grade 2	78.5¢ per litre
Grade 3	81.5¢ per litre
Ultra-low-sulfur diesel oil	81.8¢ per litre

And now therefore the Board has determined, based on historical data regarding price changes and to achieve revenue neutrality, it is appropriate to apply, and the Board so orders, forward averaging corrections of:

Gasoline:	plus 0.4¢ per litre
Ultra-low-sulfur diesel oil:	plus 0.8¢ per litre

And whereas a winter blending adjustment of plus 0.5¢ per litre is required for ultra-low-sulfur diesel oil;

And now therefore the Board prescribes the prices for petroleum products as set forth in Schedule “A” effective on and after 12:01 a.m., October 21, 2011.

Dated at Halifax, Nova Scotia, this 20th day of October, 2011.

Sgd: *Elaine Wagner*
Clerk of the Board

Schedule "A"

**Prices Prescribed for Petroleum Products
under the *Petroleum Products Pricing Act* and the
Petroleum Products Pricing Regulations
effective on and after 12:01 a.m. on October 21, 2011**

Nova Scotia Petroleum Price Schedule								
Petroleum Prices in Cents/Litre					Self-Service Pump Prices		Full-Service Pump Prices	
					(Pump Prices includes 15% HST)			
	Base Wholesale Price	Fed. Excise Tax	Prov. Tax	Wholesale Selling Price	Min	Max	Min	Max
Zone 1								
Regular Unleaded	82.2	10.0	15.5	107.7	128.5	130.2	128.5	999.9
Mid-Grade Unleaded	85.2	10.0	15.5	110.7	131.9	133.6	131.9	999.9
Premium Unleaded	88.2	10.0	15.5	113.7	135.4	137.1	135.4	999.9
Ultra-Low-Sulfur Diesel	89.4	4.0	15.4	108.8	129.7	131.4	129.7	999.9
Zone 2								
Regular Unleaded	82.6	10.0	15.5	108.1	128.9	130.6	128.9	999.9
Mid-Grade Unleaded	85.6	10.0	15.5	111.1	132.4	134.1	132.4	999.9
Premium Unleaded	88.6	10.0	15.5	114.1	135.8	137.5	135.8	999.9
Ultra-Low-Sulfur Diesel	89.8	4.0	15.4	109.2	130.2	131.9	130.2	999.9
Zone 3								
Regular Unleaded	83.1	10.0	15.5	108.6	129.5	131.2	129.5	999.9
Mid-Grade Unleaded	86.1	10.0	15.5	111.6	132.9	134.7	132.9	999.9
Premium Unleaded	89.1	10.0	15.5	114.6	136.4	138.1	136.4	999.9
Ultra-Low-Sulfur Diesel	90.3	4.0	15.4	109.7	130.8	132.5	130.8	999.9
Zone 4								
Regular Unleaded	83.1	10.0	15.5	108.6	129.5	131.2	129.5	999.9
Mid-Grade Unleaded	86.1	10.0	15.5	111.6	132.9	134.7	132.9	999.9
Premium Unleaded	89.1	10.0	15.5	114.6	136.4	138.1	136.4	999.9
Ultra-Low-Sulfur Diesel	90.3	4.0	15.4	109.7	130.8	132.5	130.8	999.9
Zone 5								
Regular Unleaded	83.1	10.0	15.5	108.6	129.5	131.2	129.5	999.9
Mid-Grade Unleaded	86.1	10.0	15.5	111.6	132.9	134.7	132.9	999.9
Premium Unleaded	89.1	10.0	15.5	114.6	136.4	138.1	136.4	999.9
Ultra-Low-Sulfur Diesel	90.3	4.0	15.4	109.7	130.8	132.5	130.8	999.9
Zone 6								
Regular Unleaded	83.9	10.0	15.5	109.4	130.4	132.1	130.4	999.9
Mid-Grade Unleaded	86.9	10.0	15.5	112.4	133.9	135.6	133.9	999.9
Premium Unleaded	89.9	10.0	15.5	115.4	137.3	139.0	137.3	999.9
Ultra-Low-Sulfur Diesel	91.1	4.0	15.4	110.5	131.7	133.4	131.7	999.9