
**PROVINCIAL MEDICAL DIRECTOR'S
MEDICAL OVERSIGHT QUARTERLY UPDATE
JULY 2005**

1.0 REVISED POLICIES, PROTOCOLS, PROCEDURES AND MEDICATIONS

1.1 For Update of your manuals (copies attached)

- 1.2.1 ▶ Policy 6125.03: Physical Restraints
- ▶ Protocol 6208.03: Anaphylaxis
- ▶ Protocol 6278.03: Violent/Agitated
- ▶ Medication 6900.02: Adenosine
- ▶ Medication 6939.02: Haloperidol (Haldol)
- ▶ Medication 6954.02: Midazolam (Versed)
- ▶ Revised Table of Contents

- 1.2.2 The “Revisions” section at the end of each Policy/Procedure/Medication provides you with a detailed explanation of changes.

2.0 GENERAL INFORMATION

2.1 Thank you.

- 2.2.1 First I would like to thank all of you, especially those of you who sent cards and letters as well as attended the service for my wife. On behalf of my family and myself, thank you for your support.

2.2 New AHA Guidelines

- 2.2.1 The new AHA Guidelines are expected to be published December 19, 2005. I anticipate several major changes including:
 - 2.2.1.1 tailoring treatment of cardiac arrest according to the interval of cardiac arrest duration. From collapse to 4 - 5 minutes after has been termed the **Electrical Phase** during which the patient should be defibrillated ASAP; 4 - 5 minutes to 8 - 10 minutes after the arrest has been termed the **Circulatory Phase**. If no CPR is being performed then at least 90 seconds of compressions should be given prior to any shock being delivered. After 8 - 10 minutes the term **Metabolic Phase** has been used. Again at least 90 seconds of chest compressions should be given before defibrillation. As well IV access should be obtained and drugs pushed according to the arrhythmia presenting.

A bigger change anticipated is the emphasis that will be placed on compressions as opposed to ventilation. I have heard 100:2, 400:2 and even no ventilation in the first 8 minutes. It will be interesting what the final decision will be?

The big question now is when do we (EHS) change our protocols - when there is good evidence or when the standard setting organization publishes their new guidelines? Because of the proximity to the release of the new guidelines and the uncertainty as to how the final guidelines will look, I have decided to wait until December in regards to changing the chest compression to ventilation ratio.

2.3 *ICP*

- 2.3.1 As indicated by the EMC website several people are interested in reinstating ICP education/training and registration. The reasons cited was the uncomfortable leap from PCP to ACP. I believe the concern is the large body of knowledge and skills that must be mastered before being comfortable at the ACP level.

I feel that the fewer the levels of paramedics, the better it is for the profession. There are not different levels of physicians or nurses. I think the best way to address the concern about working as an ACP is a strong education program, good orientation and a mentoring program that would allow you to become comfortable at the ACP level before being partnered with a PCP (or ICP).

2.4 *International Emergency Conference*

- 2.4.1 It was good and impressive - to see so many paramedics presenting at this International conference held in Montreal. The paramedics were Jay Walker, John Bessonette, Leith Fermin, Graham McAllister and Dave Myher as well as Bud Avery speaking as the manger of the Lifeflight program.

2.5 *IM Versed for Agitated Patients*

- 2.5.1 You will note that the protocol for Violent/Agitated Patients has changed. I believe there is enough evidence re: effectiveness and safety to use Versed IM instead of Haldol. According to the literature, Versed has a faster onset, shorter duration of action and less side effects. My only concern is one study that noted patients given Versed became too drowsy to the point of requiring ventilation assistance on occasion.

If a patient fails to respond within ten (10) minutes I would suggest repeating IM Versed at 2.5 - 5.0 mg.

- 2.5.2 We will keep Haldol in stock for now until I can evaluate how well Versed is or isn't working. **I would appreciate any feedback on the effects of**

Versed.

2.6 Medical Quality Performance Quarterly Report

- 2.6.1 Please see the “snapshot” report for the first quarter of 2005. Unfortunately and despite excellent process measurements (call response intervals, bystander CPR and protocol compliance) our survival rate for cardiac arrests is quite low. I will watch this through the year and meet with the Medical Oversight Board and the newly formed CQI Committee to hopefully come up with ways to improve this. **In the meantime we are open to your suggestions.**

3.0 FAQs

3.1 Chest Tubes

- 3.1.1 I believe transferring patients with chest tubes functioning or clamped must be done by an ACP or CCP.

3.2 AMT Scene Calls

- 3.2.1 Please be advised that AMT only do scene calls for trauma cases with major trauma triage criteria present. They will not do scene calls for medical problems - unless the scene is unaccessible by ground. These patients should be transported by ground to the nearest hospital. The physician on duty at that hospital should make the decision to call for AMT.

4.0 RESEARCH

4.1 WEST Study

- 4.1.1 As of June 13, 2005, 16 more pre-hospital patients are required to complete the full study. On June 12, 2005 Drs. Iqbal Bata, Blair O’Neill and I traveled to Edmonton to hear the preliminary results of the study. Though I am bound not to reveal the results, I can say that all attendees were very impressed by the paramedics’ abilities to multitask and deliver the drugs to the patients or the patients to the Cath lab within excellent intervals. We (in-hospital and pre-hospital) enrolled more patients than Montreal, Edmonton and Vancouver. Great job!

4.2 CPAP

4.2.1 Last I heard we were at 59 patients and needed 65. Almost there!

4.3 *The Pre-Hospital Validation of the Canadian C-Spine Rule by Paramedics*

4.3.1 This is a difficult study to apply - I appreciate the challenges. Paramedics have enrolled patients to date - please refer to the c-spine update sheets that should be posted at each base in the areas taking part. If not there please ask the Supervisor and /or the Pre hospital coordinator (Bridgewater - David Hey, Truro - Carlis Coulter, Kentville - Bruce Cruickshank and ICB - Steve Leadlay).

4.4 *Determinants of Survival in Cardiac Arrest*

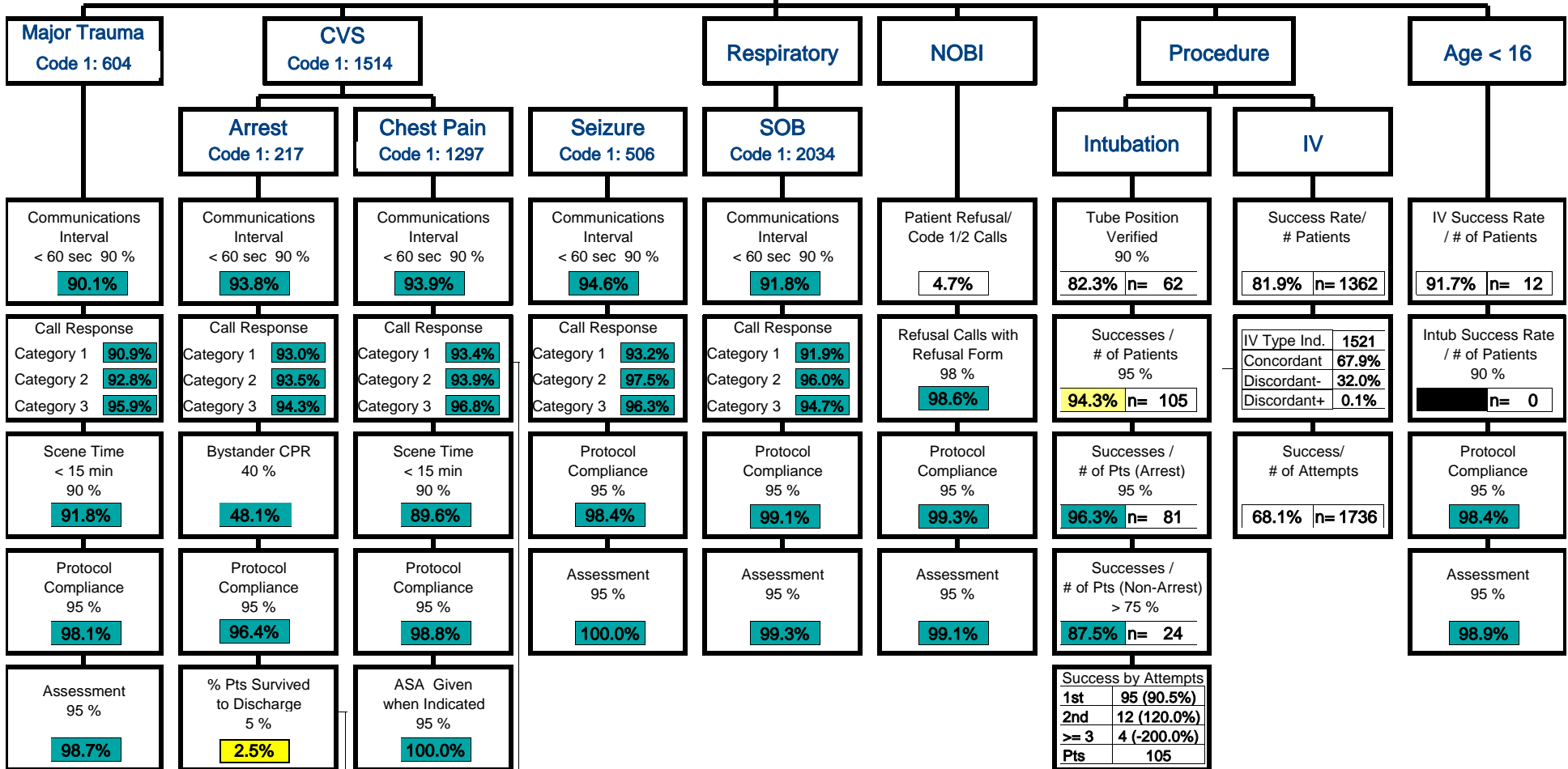
4.4.1 We are just completing a seven year study of this - including 2004 data. Essentially arrests in public places, witnessed arrests, short collapse to defibrillation interval and presenting arrhythmia of VF/VT are associated with increased survival rates. Unlike several other major studies, bystander CPR did not reach statistical significance. We are looking into why our results differ from these other studies.

Period Year to Date 03/31/05
 Provincial
 Total Calls: 25,851 Code 1: 11,002

Nova Scotia Emergency Health Services

Medical Quality Performance Measure Report

■ Achieved or above target
■ Within 10% of target
■ Below target by more than 10%
■ No data available



% Patients...
 * Arrest Confirmed
 * Resuscitation attempted
 * Etiology Confirmed

Call Response Interval (call received 'til unit arrive scene)
 Category 1 - Response interval <9 min. - 90 %
 Category 2 - Response interval <15 min. - 90 %
 Category 3 to 5 - Response interval <30 min. - 90 %

* (Concordant) - Actual method is the same as the indicated method.
 * (Discordant +) - Actual method is greater than the indicated method.
 * (Discordant -) - Actual method is less than the indicated method.

Program Document No.: 6125.03	Document Title: Physical Restraints	Type: Policy
Effective Date: February 1, 2001	Revision Date 01: July 7, 2003	
Approval Date: January 15, 2001	Revision Date 02: January 21, 2004	
Review Date: November	Revision Date 03: February 9, 2005	
Replaces: 6125.02	Revision Date 04:	
Signature of Program Director: <i>original signed by Ed Cain</i>		Signature of Program Document Coordinator: <i>original signed by Jennifer Girard</i>

1.0 Purpose

- 1.1 To define when restraints are to be used and the standard of care for restrained patients.
- 1.2 To ensure the safety of pre-hospital personnel and patients.

2.0 Guiding Philosophy

- 2.1 To ensure optimal patient outcome.

3.0 Definitions

- 3.1 Hobble Restraint: The technique of restraining the patient's wrists and ankles together behind the patient's back.

4.0 Policy

- 4.1 The safety of pre-hospital personnel is paramount followed by the safety of protecting patients from harming themselves.
- 4.2 Patient dignity should be maintained.
- 4.3 **Remember:** Assess the patient for medical conditions that may cause violent behavior. These include, but are not limited to:
 - 4.3.1 Hypoxia.
 - 4.3.2 Hypoglycemia.
 - 4.3.3 Alcohol/drug intoxication.
 - 4.3.4 Brain trauma.
 - 4.3.5 Stroke.
- 4.4 Any restraint used should allow for rapid removal if patient vomits or develops respiratory distress.

PDN: 6125.03	Subject: Physical Restraints		
Effective Date: February 1, 2001	Replaces: 6125.02	Revised: Yes <input checked="" type="checkbox"/> No <input type="checkbox"/> (please check)	

- 4.5 Patients are not to be hobbled, hog-tied or restrained in a prone position with hands and feet behind their back.
- 4.6 Patients are not to be “sandwiched” between back boards or mattresses.
- 4.7 Restraints must not constrict the neck or compromise the airway.
- 4.8 If patients are restrained in devices requiring a key, the key must accompany the patient.
- 4.9 Use chemical restraint (Midazolam 5 mg IM) if patient continues to struggle against physical restraints in order to prevent hyperkalemia, rhabdomyolysis and/or cardiac arrest.
- 4.10 Physical restraints are to be used as a last resort to prevent harm to either the patient or the paramedics (they often antagonize/frustrate a person who may be paranoid or delusional).
- 4.11 **Remember:** When faced with overt violence, try verbal control first. A strong patient may need five (5) or more people to control him/her, so ensure adequate human resources.
- 4.12 Four point restraints as well as tethering the hips, thighs and chest should be used.
- 4.13 Patients are not to be transported in the prone position if they have received chemical restraint.
- 4.14 A surgical mask may be placed on the patient to prevent spitting.
- 4.15 A cervical collar may decrease a patient’s range of motion in attempting to bite.
- 4.16 A patient in restraints must be constantly observed and have his/her airway, breathing, circulation and level of consciousness continuously assessed.
- 4.17 Be prepared for unexpected regurgitation/vomiting - have suction ready and be prepared to turn/log roll patient.
- 4.18 Document the reasons for the restraints and the times applied and removed, the type(s) of restraint(s) and condition of patient during restraint and on arrival at emergency department.
- 4.19 Be aware that patients with agitated delirium caused by drugs - especially cocaine - have died while in physical restraints.

5.0 Appendices

None

6.0 Reports

- 6.1 All applications of physical restraints will be reviewed by the Quality Control Medic (QCM) for adherence of policy/procedure.

PDN: 6125.03	Subject: Physical Restraints		
Effective Date: February 1, 2001	Replaces: 6125.02	Revised: Yes <input checked="" type="checkbox"/> No <input type="checkbox"/> (please check)	

7.0 References

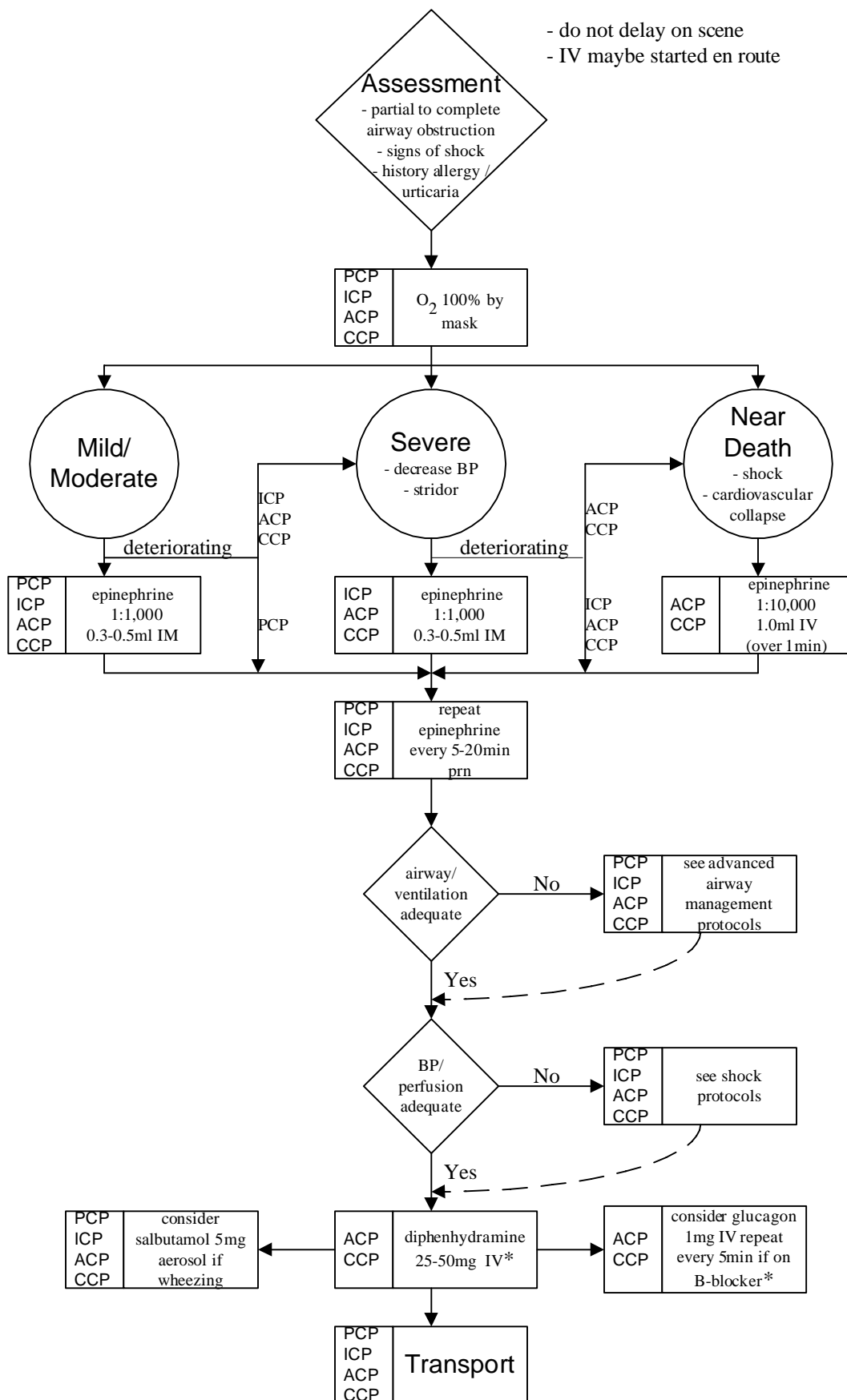
- 7.1 Policy 6124: Violent/Agitated Patients
- 7.2 Policy 6126: Inter-Health Care Facilities Transfer of Potentially Violent or Violent Patients
- 7.3 NAEMSP Position Paper: Patient Restraint in Emergency Medical Services Systems. Pre-hospital Emergency Care July - September 2002;6(3) p. 340-5.
- 7.4 Roeggla M, Wagner A, Muellner M, et al. Cardiorespiratory consequences to hobble restraint. Wien Klin Wochenschr. 1997;109:359-61.
- 7.5 Chan TC, Vilke GM, Neuman T, Clausen JL. Restraint position and positional asphyxia. Ann Emerg Med. 1997;30:578-86.
- 7.6 Hill S, Petit J. The violent patient. Emerg Med Clin North Am. 2000;18:301-5.

8.0 Outcome Measurement

None

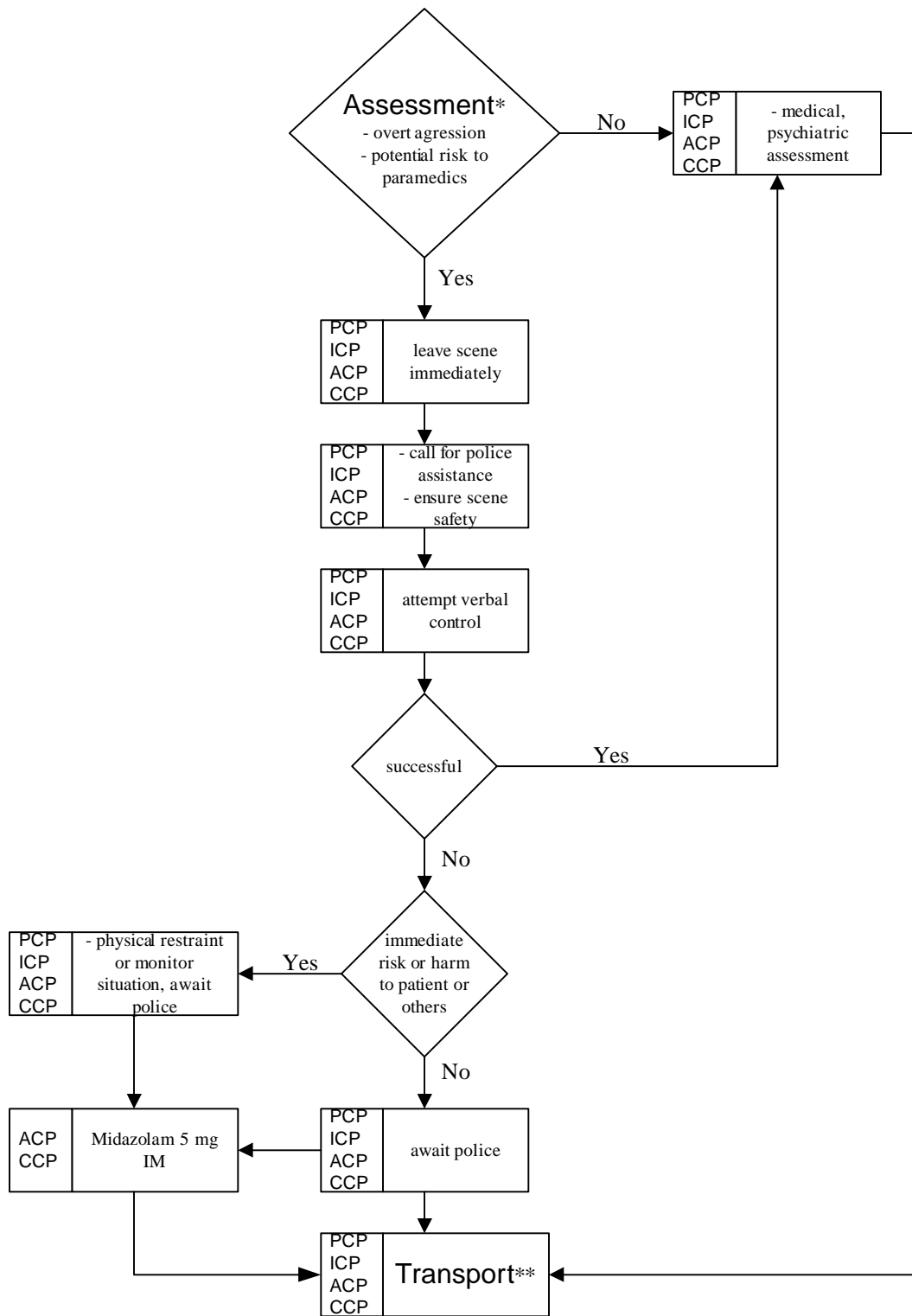
9.0 Revisions

- 9.1 Revision Number: 03
- 9.2 Sections and sub-sections that have been changed:
 - 4.9 - Use chemical restraint (~~Haldol 5 mg IM/IV +/-~~ Midazolam 2 5 mg IM/IV) if patient continues....



*IM if unable to obtain IV access

Protocol: Violent/Agitated	PDN: 6278.03	Last Updated: February 9, 2005	Subject: Psychiatric	Page 1
-----------------------------------	---------------------	---------------------------------------	-----------------------------	--------



* be aware of the possibility of hypoglycemia

** whether police accompany you in ambulance or transport patient in their vehicle, this will be made on a case by case basis, either way

Patients receiving Medication must be Transported by Ambulance

Medication: Adenosine	PDN: 6900.02	Last Updated: July 13, 2005	PMD: EC	PDC: JG	Page 1 of 2
-----------------------	--------------	-----------------------------	---------	---------	-------------

Adenosine

1.0 Definitions

None

2.0 Classification

- 2.1 A naturally occurring nucleoside.
- 2.2 Antiarrhythmic.

3.0 Mechanism of Action

- 3.1 Slows AV node conduction.

4.0 Indications

- 4.1 PSVT.

5.0 Contraindications

- 5.1 Wide complex tachycardia.
- 5.2 Known hypersensitivity.
- 5.3 Reactive A/W disease (asthma).

6.0 Dosage

- 6.1 6 mg IV rapid bolus given as close to possible to vein and followed by a flush of 50 cc N/S using larger base IV.
- 6.2 May repeat as 12 mg IV rapid bolus.

7.0 Supplied

- 7.1 6 mg preload syringes.

8.0 May Be Given By

- 8.1 Advanced Care Paramedic (ACP).
- 8.2 Critical Care Paramedic (CCP).

Medication: Adenosine	PDN: 6900.02	Last Updated: July 14, 2005	PMD:	PDC:	Page 2 of 2
------------------------------	---------------------	------------------------------------	-------------	-------------	-------------

9.0 Precautions

9.1 Patients with unstable angina may be at greater risk for major side effects.

10.0 Side Effects

10.1 Chest pressure, dizziness, dyspnea, flushing, nausea, feeling of impending doom.

10.2 All side effects are very brief (< 1 minute).

11.0 Directive

None

12.0 Reports

12.1 Quarterly and Annual QA Report

13.0 References

13.1 AHA Guidelines - August 2000

13.2 1999 Intravenous Medications - Gahrant, B and Nuzareno, A

13.3 Pelleg A, et al: Proarrhythmic Effects of Adenosine: One Decade of Clinical Data. Am J Ther. 2002 Mar-Apr;9(2):141-7.

14.0 Revisions

14.1 Revision Number: 2

14.2 Sections and sub-sections that have been changed:

- 5.1 - ~~A fibrillation or flutter.~~
- 13.3 - *Added*

Medication: Haloperidol (Haldol)	PDN: 6939.02	Last Updated: February 9, 2005	PMD:	PDC:	Page 1 of 2
---	---------------------	---------------------------------------	-------------	-------------	-------------

HALOPERIDOL (HALDOL)

1.0 Definitions

- 1.1 **Extrapyramidal:** Constellation of muscle rigidity, opisthotonus (spasms of neck and jaw muscles causing turning of head to one side with a “crooked grin”) and oculogyric crisis (spasm of extraocular muscles causing eyes to deviate to one side).

2.0 Classification

- 2.1 Antipsychotic.

3.0 Mechanism of Action

- 3.1 Decreased hyperactivity, agitation and mania.
- 3.2 Potent dopamine blocker.
- 3.3 Antinauseant.
- 3.4 Extra pyramidal effects.

4.0 Indications

- 4.1 Violent, psychotic patient.

5.0 Contraindications

- 5.1 CNS depression.
- 5.2 Sensitivity/allergy.
- 5.3 Cocaine induced agitation/violence.

6.0 Dosage

- 6.1 5 - 10 mg IM (peak effect at 20 minutes).
- 6.2 5 mg IV (if Haloperidol Lactate).

7.0 Supplied

- 7.1 5 mg/1 cc vial.

8.0 May Be Given By

- 8.1 Advanced Care Paramedic (ACP).

Medication: Haloperidol (Haldol)	PDN: 6939.02	Last Updated: February 9, 2005	PMD:	PDC:	Page 2 of 2
---	---------------------	---------------------------------------	-------------	-------------	-------------

8.2 Critical Care Paramedic (CCP).

9.0 Precautions

9.1 Only the Haloperidol Lactate can be given IV.

9.2 May cause marked hypotension and bradycardia in patients on propranolol.

10.0 Side Effects

10.1 CVS:

10.1.1 Slight decreased and increased HR.

10.2 CNS:

10.2.1 Extrapyramidal effects of rigidity, opisthotonus and oculogyric crisis.

10.3 Drowsiness.

11.0 Directive

None

12.0 Reports

12.1 Quarterly and Annual QA Report

13.0 References

None

14.0 Revisions

• 5.3 - *Added*

Medication: Midazolam (Versed)	PDN: 6954.02	Last Updated: February 9, 2005	PMD: EC	PDC: JG	Page 1 of 2
---------------------------------------	---------------------	---------------------------------------	----------------	----------------	-------------

MIDAZOLAM (VERSED)

1.0 Definitions

None

2.0 Classification

2.1 Sedative, anticonvulsant benzodiazepine.

3.0 Mechanism of Actions

3.1 Sedative-hypnotic agent that causes central nervous system (CNS) depression and relaxation of skeletal muscle.

3.2 Fast acting.

3.3 Short duration of effect.

3.4 3 - 4 times as potent as Diazepam.

4.0 Indications

4.1 To aid ETI, pacing and cardioversions.

4.2 As a chemical restraint in violent, agitated adult patients.

5.0 Contraindications

5.1 Known allergy to benzodiazepam.

5.2 Acute open angle closure glaucoma.

6.0 Dosage

6.1 Adult:

6.1.1 To aid ETI: 2 - 5 mg IV over 20 - 30 secs - repeat prn.

6.1.2 For chemical restraint: 5 mg IM

6.2 Pediatric:

6.2.1 .05 mg/kg IV over 20 - 30 secs - repeat prn.

7.0 Supplied

7.1 1 mg/cc and 5 mg/cc.

Medication: Midazolam (Versed)	PDN: 6954.01	Last Updated: February 9, 2005	PMD:	PDC:	Page 2 of 2
---------------------------------------	---------------------	---------------------------------------	-------------	-------------	-------------

8.0 May Be Given By

- 8.1 Advanced Care Paramedic (ACP).
- 8.2 Critical Care Paramedic (CCP).

9.0 Precautions

- 9.1 May cause hypotension, respiratory depression, excessive drowsiness, headache, muscle stiffness, agitation.

10.0 Side Effects

- 10.1 Decreased LOC, lethargy.
- 10.2 Slurred speech, blurred vision.
- 10.3 Hypotension.
- 10.4 Respiratory depression.
- 10.5 Vertigo.
- 10.6 More prominent in the elderly and patients with chronic disease states.

11.0 Directive

- 11.1 Each paramedic at shift change must sign off and on respectively the number of vials present. All medication must be accounted for.
- 11.2 Any discrepancy in the number of vials present and used must be reported to your immediate supervisor verbally and in writing within 24 hours.

12.0 Reports

- 12.1 Quarterly and Annual QA Report

13.0 References

- 13.1 Protocol 6214: Seizure
- 13.2 Protocol 6254: Pediatric Seizure
- 13.3 Protocol 6201: Awake/Combative/Clenching Intubation

14.0 Revisions

- 4.1 - To aid with intubation *ETI*, pacing and cardioversions.
- 4.2 - *Added*
- 6.1.1 - *To aid ETI: 2 - 5 mg IV ...*
- 6.1.2 - *Added*

TABLE OF CONTENTS

Medical Policies

Policy	Title	Deleted	New	Released
6100.02	Mandatory On-Line Medical Oversight Physician Contact	<input type="checkbox"/>	<input type="checkbox"/>	8/ 6/2003
6101.01	Conflict With On-line Medical Control	<input type="checkbox"/>	<input type="checkbox"/>	8/ 6/2003
6102.01	Communication Failure	<input type="checkbox"/>	<input type="checkbox"/>	8/ 6/2003
6103.02	Deviation from Policies/Protocols/Procedural Standards	<input type="checkbox"/>	<input type="checkbox"/>	10/14/2003
6103.02 A	Matrix for QCM Evaluation of Pre-hospital Medical Care Occurrence Report	<input type="checkbox"/>	<input type="checkbox"/>	10/14/2003
6104.02	Medical Responsibilities of Paramedics	<input type="checkbox"/>	<input type="checkbox"/>	10/14/2003
6105.01	Medical Assessment	<input checked="" type="checkbox"/>	<input type="checkbox"/>	
6106.01	Medical Documentation	<input type="checkbox"/>	<input type="checkbox"/>	8/ 6/2003
6107.02	Multiple Pre-Hospital Care Providers at Scene	<input type="checkbox"/>	<input type="checkbox"/>	8/ 6/2003
6108.02	Radio Patches to Emergency Departments	<input type="checkbox"/>	<input type="checkbox"/>	8/ 6/2003
6109.01	Patient Report to (Emergency Department) Nurse and/or Physician in Receiving Unit	<input type="checkbox"/>	<input type="checkbox"/>	8/ 6/2003
6110.01	Pediatric Patient Resuscitation	<input checked="" type="checkbox"/>	<input type="checkbox"/>	
6111.01	Treatment of Minors	<input type="checkbox"/>	<input type="checkbox"/>	8/ 6/2003
6112.02	Health Care Professional on Scene	<input type="checkbox"/>	<input type="checkbox"/>	2/ 5/2004
6112.02 A	Physician-On-Scene Card/Nurse-On-Scene Card	<input type="checkbox"/>	<input type="checkbox"/>	2/ 5/2004
6113.02	Refusal of Care	<input type="checkbox"/>	<input type="checkbox"/>	2/ 5/2004
6113.02 A	Refusal Form	<input type="checkbox"/>	<input type="checkbox"/>	2/ 5/2004
6114.02	Advanced Directives/Living Wills	<input type="checkbox"/>	<input type="checkbox"/>	8/ 6/2003
6114.02 A	Do Not Resuscitate (DNR) Form	<input type="checkbox"/>	<input type="checkbox"/>	8/ 6/2003
6115.01	Physician Do Not Resuscitate Order	<input type="checkbox"/>	<input type="checkbox"/>	8/ 6/2003
6115.01 A	Physician DNR Order Form	<input type="checkbox"/>	<input type="checkbox"/>	8/ 6/2003
6116.02	Pronouncement of Death in the Field	<input type="checkbox"/>	<input type="checkbox"/>	8/ 6/2003
6117.03	Police and Chief Medical Examiner Notification of Out-of-Hospital Deaths	<input type="checkbox"/>	<input type="checkbox"/>	10/31/2003
6118.02	Palliative Care Patients	<input type="checkbox"/>	<input type="checkbox"/>	8/ 6/2003
6119.01	Divert	<input type="checkbox"/>	<input type="checkbox"/>	7/15/2004
6120.04	Trip Destination	<input type="checkbox"/>	<input type="checkbox"/>	2/18/2005
6120.04 A	Trip Destination for Trauma Patients	<input type="checkbox"/>	<input type="checkbox"/>	2/18/2005
6121.01	Requests by a Physician for Patients to be Transported to Physician's Office	<input type="checkbox"/>	<input type="checkbox"/>	8/ 6/2003
6122.01	Child Abuse	<input type="checkbox"/>	<input type="checkbox"/>	8/ 6/2003

Policy	Title	Deleted	New	Released
6122.01 A	Children's Aid Societies/Family and Children's Services Telephone Numbers	<input type="checkbox"/>	<input type="checkbox"/>	8/ 6/2003
6123.02 A	Adult Protection Services - List of Provincial Telephone Numbers	<input checked="" type="checkbox"/>	<input type="checkbox"/>	
6123.03	Adult Abuse	<input type="checkbox"/>	<input type="checkbox"/>	2/ 5/2004
6124.01	Violent/Agitated Patients	<input type="checkbox"/>	<input type="checkbox"/>	8/ 6/2003
6125.03	Physical Restraints	<input type="checkbox"/>	<input type="checkbox"/>	7/20/2005
6126.01	Inter-Health Care Facilities Transfer of Potentially Violent or Violent Patients	<input type="checkbox"/>	<input type="checkbox"/>	12/12/2003
6127.01	Transfer of Care from Physicians and Nurses in Health Care Institutions	<input type="checkbox"/>	<input type="checkbox"/>	8/ 6/2003
6128.01	Ground Transfer of Patients-Medical Responsibilities-Medical Staff Accompanying	<input type="checkbox"/>	<input type="checkbox"/>	8/ 6/2003
6129.06	Ground Transfer of Patients-Medical Responsibilities-Medical Staff Not Accompanying	<input type="checkbox"/>	<input type="checkbox"/>	4/ 1/2004
6130.01	Transfer of Patients on Intravenous (IV) Pumps	<input checked="" type="checkbox"/>	<input type="checkbox"/>	
6131.00	Intravenous versus Saline Locks	<input checked="" type="checkbox"/>	<input type="checkbox"/>	
6132.01	Intraosseous Infusions	<input checked="" type="checkbox"/>	<input type="checkbox"/>	
6133.02	Medication Administration	<input type="checkbox"/>	<input type="checkbox"/>	8/ 6/2003
6134.03	Chronic Obstructive Pulmonary Disease Patients	<input type="checkbox"/>	<input type="checkbox"/>	4/ 1/2004
6135.03	Patients on Home Oxygen	<input type="checkbox"/>	<input type="checkbox"/>	4/ 1/2004
6136.01	Universal Precautions	<input type="checkbox"/>	<input type="checkbox"/>	8/ 6/2003
6137.01	Infectious Disease Exposure	<input type="checkbox"/>	<input type="checkbox"/>	8/ 6/2003
6138.01	Precautions for Methicillin Resistant Staphylococcus Aureus (MRSA) Patients	<input type="checkbox"/>	<input type="checkbox"/>	8/ 6/2003
6139.01	Precautions for Vancomycin Resistant Enterococcus (VRE) Patients	<input type="checkbox"/>	<input type="checkbox"/>	8/ 6/2003
6140.01	Hazardous Material Exposure	<input checked="" type="checkbox"/>	<input type="checkbox"/>	
6141.00	Resuscitation of Trauma Patients With No Vital Signs on Arrival of Paramedics	<input checked="" type="checkbox"/>	<input type="checkbox"/>	
6142.01	Load and Go Criteria	<input type="checkbox"/>	<input type="checkbox"/>	8/ 6/2003
6143.02	Advanced Life Support Intercept	<input type="checkbox"/>	<input type="checkbox"/>	8/ 6/2003
6144.04	Advanced Life Support Transferring Patient Care to Basic Life Support	<input type="checkbox"/>	<input type="checkbox"/>	8/ 6/2003
6145.01	Impending Childbirth	<input type="checkbox"/>	<input type="checkbox"/>	8/ 6/2003
6146.01	Prolonged Submersions	<input checked="" type="checkbox"/>	<input type="checkbox"/>	
6147.01	Manual Defibrillation	<input checked="" type="checkbox"/>	<input type="checkbox"/>	
6148.03	Intermediate Care Paramedic Calling On Line for Medication Order When Working with an Advanced Care Paramedic	<input type="checkbox"/>	<input type="checkbox"/>	10/31/2003

Policy	Title	Deleted	New	Released
6149.01	Transfer of Responsibility for Care of Air Medical Transport Patients to Ground Paramedics	<input type="checkbox"/>	<input type="checkbox"/>	8/ 6/2003
6150.04	Tissue Donation	<input type="checkbox"/>	<input type="checkbox"/>	10/25/2004
6151.01	Handoff to Armed Forces Personnel for Air Medical Transport	<input type="checkbox"/>	<input type="checkbox"/>	8/ 6/2003
6152.01	Mass Casualty Incidents	<input type="checkbox"/>	<input type="checkbox"/>	8/ 6/2003
6153.00	Endotracheal Tube Confirmation	<input checked="" type="checkbox"/>	<input type="checkbox"/>	
6154.01	Developing Protocol Proposal	<input type="checkbox"/>	<input type="checkbox"/>	8/ 6/2003
6155.01	Special Patients	<input type="checkbox"/>	<input type="checkbox"/>	8/ 6/2003
6156.01	Transport of Patients seeking Medical Attention in the Excess Capacity Project Area	<input checked="" type="checkbox"/>	<input type="checkbox"/>	
6157.01	Stillbirth	<input type="checkbox"/>	<input type="checkbox"/>	8/ 6/2003
6158.01	Sudden Infant Death Syndrome	<input type="checkbox"/>	<input type="checkbox"/>	8/ 6/2003
6159.01	Pain Management (Non Cardiac)	<input type="checkbox"/>	<input type="checkbox"/>	8/ 6/2003
6160.03	Calls to Cells in Halifax Regional Municipality	<input type="checkbox"/>	<input type="checkbox"/>	10/25/2004
6161.02	Hyperventilation	<input type="checkbox"/>	<input type="checkbox"/>	8/ 6/2003
6162.02	Helmet Removal	<input type="checkbox"/>	<input type="checkbox"/>	8/ 6/2003
6163.02A	Notifying Tertiary Trauma Centres of Incoming Major Trauma Patients	<input checked="" type="checkbox"/>	<input type="checkbox"/>	
6163.03	Notifying Tertiary Trauma Centres of Incoming Trauma Patients	<input type="checkbox"/>	<input type="checkbox"/>	2/18/2005
6164.01	Excess Capacity Medical Care Protocols	<input checked="" type="checkbox"/>	<input type="checkbox"/>	
6165.01	Transfer of Care of Cardiac Arrest Patient from First Responders	<input type="checkbox"/>	<input type="checkbox"/>	8/ 6/2003
6166.00	***Replaced by 6165***	<input checked="" type="checkbox"/>	<input type="checkbox"/>	
6167.01	Sexual Assault	<input type="checkbox"/>	<input type="checkbox"/>	8/ 6/2003
6168.02	Ambulance Response Guidelines	<input type="checkbox"/>	<input type="checkbox"/>	2/18/2005
6169.01	Care of Individuals who have been Tasered	<input type="checkbox"/>	<input type="checkbox"/>	8/ 6/2003
6170.00	EHS Paramedics staffing Emergency Departments when there is no Physician Coverage	<input type="checkbox"/>	<input checked="" type="checkbox"/>	
6171.00	Blood Transfusion Reaction	<input type="checkbox"/>	<input checked="" type="checkbox"/>	7/15/2004
6171.00 A	Identification and Management of a Blood Transfusion	<input type="checkbox"/>	<input checked="" type="checkbox"/>	7/15/2004
6172.00	Critical Overcrowding Plan for Emergency (COPE)	<input type="checkbox"/>	<input checked="" type="checkbox"/>	

TABLE OF CONTENTS

Medical Protocols

Category	PDN	Title	Deleted	New	Released
Advanced Airway Management	6200.03	Arrest/Unconscious Intubation	<input type="checkbox"/>	<input type="checkbox"/>	12/12/2003
	6201.02	Awake/Combative/Clenching Intubation	<input type="checkbox"/>	<input type="checkbox"/>	8/ 6/2003
	6202.04	Difficult Airway Intubation	<input type="checkbox"/>	<input type="checkbox"/>	12/12/2003
	6203.03	ETI Confirmation*(EDD)	<input checked="" type="checkbox"/>	<input type="checkbox"/>	
	6204.02	ETI Confirmation	<input type="checkbox"/>	<input type="checkbox"/>	8/ 6/2003
	6205.03	Failed/Rescue Airway	<input type="checkbox"/>	<input type="checkbox"/>	8/ 6/2003
Airway Emergency	6206.01	Foreign Body Obstruction (Partial/Complete)	<input type="checkbox"/>	<input type="checkbox"/>	8/ 6/2003
	6207.01	Near Hanging	<input type="checkbox"/>	<input type="checkbox"/>	8/ 6/2003
Allergic Reaction	6208.03	Anaphylaxis	<input type="checkbox"/>	<input type="checkbox"/>	7/20/2005
	6209.01	Mild Allergic Reaction	<input type="checkbox"/>	<input type="checkbox"/>	8/ 6/2003
Altered Mental State-Decrease LOC	6210.01	Altered Mental Status Overview	<input type="checkbox"/>	<input type="checkbox"/>	8/ 6/2003
	6211.01	Altered Mental Status (NYD)	<input type="checkbox"/>	<input type="checkbox"/>	8/ 6/2003
	6212.02	Hypoglycemia	<input type="checkbox"/>	<input type="checkbox"/>	12/12/2003
	6213.02	Overdose/Poisoning	<input type="checkbox"/>	<input type="checkbox"/>	10/25/2004
	6214.01	Seizure	<input type="checkbox"/>	<input type="checkbox"/>	8/ 6/2003
Blood Transfusion	6315.00	Blood Transfusion Reaction	<input type="checkbox"/>	<input checked="" type="checkbox"/>	7/15/2004
Burns	6215.01	Burns (fire/flame)	<input type="checkbox"/>	<input type="checkbox"/>	8/ 6/2003
	6216.02	Chemical Splash/Burn	<input type="checkbox"/>	<input type="checkbox"/>	8/ 6/2003
	6217.03	Electrocution/Electrical Burns	<input type="checkbox"/>	<input type="checkbox"/>	8/ 6/2003
	6218.01	Lightning	<input type="checkbox"/>	<input type="checkbox"/>	8/ 6/2003
	6219.01	Smoke Inhalation	<input type="checkbox"/>	<input type="checkbox"/>	8/ 6/2003
Cardiac Arrest	6220.02	Cardiac Arrest Overview	<input type="checkbox"/>	<input type="checkbox"/>	7/15/2004
	6221.02	Asystole (no shock advised)	<input type="checkbox"/>	<input type="checkbox"/>	12/12/2003
	6222.01	PEA (no shock advised)	<input type="checkbox"/>	<input type="checkbox"/>	8/ 6/2003
	6223.02	VF/Pulseless VT (shock advised)	<input type="checkbox"/>	<input type="checkbox"/>	4/ 1/2004
	6311.01	Post Cardiac Arrest - ROSC	<input type="checkbox"/>	<input type="checkbox"/>	2/ 5/2004
Cardiac Arrhythmia	6224.02	Bradycardia	<input type="checkbox"/>	<input type="checkbox"/>	8/ 6/2003
	6225.02	Tachycardia Overview	<input type="checkbox"/>	<input type="checkbox"/>	4/ 1/2004

Category	PDN	Title	Deleted	New	Released
Cardiac Arrhythmia	6226.03	Narrow Complex (stable) Tachycardia	<input type="checkbox"/>	<input type="checkbox"/>	8/ 6/2003
	6227.02	Wide Complex (stable) Tachycardia	<input type="checkbox"/>	<input type="checkbox"/>	8/ 6/2003
Chest Pain	6228.01	Chest Pain (NYD)	<input type="checkbox"/>	<input type="checkbox"/>	8/ 6/2003
	6229.02	Suspected Cardiac Origin	<input type="checkbox"/>	<input type="checkbox"/>	4/ 1/2004
Chest Pain - WEST Study	6312.00	Suspected Cardiac Origin	<input type="checkbox"/>	<input checked="" type="checkbox"/>	10/14/2003
EENT	6230.01	Epistaxis	<input type="checkbox"/>	<input type="checkbox"/>	8/ 6/2003
	6231.02	Foreign Body/Welders Flash/Chemical Splash Eye	<input type="checkbox"/>	<input type="checkbox"/>	8/ 6/2003
	6232.01	Ocular Trauma	<input type="checkbox"/>	<input type="checkbox"/>	8/ 6/2003
	6233.01	Sudden Painless Vision Loss	<input type="checkbox"/>	<input type="checkbox"/>	8/ 6/2003
	6234.01	Tooth Avulsion	<input type="checkbox"/>	<input type="checkbox"/>	8/ 6/2003
Environmental Emergency	6235.01	Diving Injury (Decompression Sickness or Bends)	<input type="checkbox"/>	<input type="checkbox"/>	8/ 6/2003
	6236.02	Electrocution/Electrical Burns	<input type="checkbox"/>	<input type="checkbox"/>	8/ 6/2003
	6237.01	Hyperthermia	<input type="checkbox"/>	<input type="checkbox"/>	8/ 6/2003
	6238.01	Hypothermia	<input type="checkbox"/>	<input type="checkbox"/>	8/ 6/2003
	6239.02	Hypothermic Cardiac Arrest	<input type="checkbox"/>	<input type="checkbox"/>	10/25/2004
	6240.01	Lightning	<input checked="" type="checkbox"/>	<input type="checkbox"/>	8/ 6/2003
	6241.02	Near Drowning	<input type="checkbox"/>	<input type="checkbox"/>	8/ 6/2003
GI-GU-Gyne	6242.03	Abdominal Pain/Flank Pain	<input type="checkbox"/>	<input type="checkbox"/>	4/ 1/2004
	6243.01	Nausea and Vomiting	<input type="checkbox"/>	<input type="checkbox"/>	8/ 6/2003
	6244.01	PV Bleed/Threatened Abortion	<input type="checkbox"/>	<input type="checkbox"/>	8/ 6/2003
	6313.00	Gross Hematuria	<input type="checkbox"/>	<input checked="" type="checkbox"/>	10/14/2003
	6314.00	GI Bleed	<input type="checkbox"/>	<input checked="" type="checkbox"/>	10/14/2003
Headache	6245.01	Headache	<input type="checkbox"/>	<input type="checkbox"/>	8/ 6/2003
Malaise, Sick	6246.01	Syncope	<input type="checkbox"/>	<input type="checkbox"/>	8/ 6/2003
	6247.01	Vertigo/Dizziness	<input type="checkbox"/>	<input type="checkbox"/>	8/ 6/2003
	6248.01	Weakness/Fatigue	<input type="checkbox"/>	<input type="checkbox"/>	8/ 6/2003
Pediatric Advanced Airway Management	6305.02	Pediatric Arrest/Unconscious Intubation	<input type="checkbox"/>	<input type="checkbox"/>	8/ 6/2003
	6306.02	Pediatric Awake/Combative/Clenching Intubation	<input type="checkbox"/>	<input type="checkbox"/>	8/ 6/2003
	6307.01	Pediatric Difficult Airway Intubation	<input type="checkbox"/>	<input type="checkbox"/>	8/ 6/2003

Category	PDN	Title	Deleted	New	Released
Pediatric Advanced Airway Management	6308.00	Pediatric ETI Confirmation (EDD)	<input checked="" type="checkbox"/>	<input type="checkbox"/>	
	6309.02	Pediatric ETI Confirmation	<input type="checkbox"/>	<input type="checkbox"/>	8/ 6/2003
	6310.02	Pediatric Failed/Rescue Airway	<input type="checkbox"/>	<input type="checkbox"/>	10/14/2003
Pediatric Airway Emergency	6249.01	Pediatric Foreign Body Obstruction (Partial/Complete)	<input type="checkbox"/>	<input type="checkbox"/>	8/ 6/2003
Pediatric Allergic Reaction	6250.01	Pediatric Anaphylaxis	<input type="checkbox"/>	<input type="checkbox"/>	8/ 6/2003
Pediatric Altered Mental State- Decreased LOC	6251.01	Pediatric Altered Mental Status (NYD)	<input type="checkbox"/>	<input type="checkbox"/>	8/ 6/2003
	6252.01	Pediatric Hypoglycemia	<input type="checkbox"/>	<input type="checkbox"/>	8/ 6/2003
	6253.01	Pediatric Overdose-Poisoning	<input type="checkbox"/>	<input type="checkbox"/>	8/ 6/2003
	6254.01	Pediatric Seizure	<input type="checkbox"/>	<input type="checkbox"/>	8/ 6/2003
Pediatric Burns	6255.01	Pediatric Burns (fire/flare)	<input type="checkbox"/>	<input type="checkbox"/>	8/ 6/2003
Pediatric Cardiac Arrest	6256.02	Pediatric Cardiac Arrest Overview	<input type="checkbox"/>	<input type="checkbox"/>	8/ 6/2003
	6257.02	Pediatric Asystole (no shock advised)	<input type="checkbox"/>	<input type="checkbox"/>	8/ 6/2003
	6258.02	Pediatric PEA (no shock advised)	<input type="checkbox"/>	<input type="checkbox"/>	8/ 6/2003
	6259.04	Pediatric VF/Pulseless VT (shock advised)	<input type="checkbox"/>	<input type="checkbox"/>	4/ 1/2004
Pediatric Cardiac Arrhythmia	6260.02	Pediatric Bradycardia	<input type="checkbox"/>	<input type="checkbox"/>	8/ 6/2003
	6261.02	Pediatric Tachycardia (adequate perfusion)	<input type="checkbox"/>	<input type="checkbox"/>	8/ 6/2003
	6262.03	Pediatric Tachycardia (poor perfusion)	<input type="checkbox"/>	<input type="checkbox"/>	8/ 6/2003
Pediatric Environmental Emergency	6263.01	Pediatric Near Drowning	<input type="checkbox"/>	<input type="checkbox"/>	8/ 6/2003
Pediatric Respiratory Distress (SOB)	6264.01	Pediatric Respiratory Distress (SOB) Overview	<input type="checkbox"/>	<input type="checkbox"/>	8/ 6/2003
	6265.01	Pediatric Respiratory Distress (SOB) NYD	<input type="checkbox"/>	<input type="checkbox"/>	8/ 6/2003
	6266.02	Pediatric Stridor	<input type="checkbox"/>	<input type="checkbox"/>	4/ 1/2004
	6267.02	Pediatric Wheeze/Bronchospasm	<input type="checkbox"/>	<input type="checkbox"/>	8/ 6/2003
Pediatric Shock	6268.03	Pediatric Nontrauma Shock	<input type="checkbox"/>	<input type="checkbox"/>	8/ 6/2003
	6269.01	Pediatric Trauma Shock	<input type="checkbox"/>	<input type="checkbox"/>	8/ 6/2003
Pediatric Trauma (ABCs/Major)	6270.01	Pediatric General Trauma Care	<input type="checkbox"/>	<input type="checkbox"/>	8/ 6/2003
Perinatal Care	6271.01	Childbirth	<input type="checkbox"/>	<input type="checkbox"/>	8/ 6/2003
	6272.02	Childbirth/Post Natal Mother Care	<input type="checkbox"/>	<input type="checkbox"/>	8/ 6/2003
	6273.02	Neonatal Resuscitation	<input type="checkbox"/>	<input type="checkbox"/>	8/ 6/2003

Category	PDN	Title	Deleted	New	Released
Perinatal Care	6274.01	Newborn Care	<input type="checkbox"/>	<input type="checkbox"/>	8/ 6/2003
	6275.01	Perinatal Mother Care	<input type="checkbox"/>	<input type="checkbox"/>	8/ 6/2003
	6276.03	Pre-Eclampsia/Eclampsia	<input type="checkbox"/>	<input type="checkbox"/>	2/18/2005
Psychiatric	6277.01	Depressed Suicidal	<input type="checkbox"/>	<input type="checkbox"/>	8/ 6/2003
	6278.03	Violent/Agitated	<input type="checkbox"/>	<input type="checkbox"/>	7/20/2005
Respiratory Distress (SOB)	6279.01	Respiratory Distress (SOB) Overview	<input type="checkbox"/>	<input type="checkbox"/>	8/ 6/2003
	6280.03	Asthma	<input type="checkbox"/>	<input type="checkbox"/>	4/ 1/2004
	6281.03	COPD	<input type="checkbox"/>	<input type="checkbox"/>	4/ 1/2004
	6282.05	Pulmonary Edema (CHF)	<input type="checkbox"/>	<input type="checkbox"/>	4/ 1/2004
	6283.02	Respiratory Distress NYD	<input type="checkbox"/>	<input type="checkbox"/>	4/ 1/2004
	6284.02	SOB (Stoma/Trach)	<input type="checkbox"/>	<input type="checkbox"/>	4/ 1/2004
Shock	6285.03	Cardiogenic Shock	<input type="checkbox"/>	<input type="checkbox"/>	8/ 6/2003
	6286.02	Nontrauma Shock	<input type="checkbox"/>	<input type="checkbox"/>	8/ 6/2003
	6287.01	Trauma Shock	<input type="checkbox"/>	<input type="checkbox"/>	8/ 6/2003
Stroke-CVA-TIA	6288.03	Stroke/CVA/TIA	<input type="checkbox"/>	<input type="checkbox"/>	8/ 6/2003
Suspected Cardiac Origin	6316.00	Chest Pain	<input type="checkbox"/>	<input checked="" type="checkbox"/>	
Toxicologic Emergency	6289.02	Chemical Splash/Burn	<input checked="" type="checkbox"/>	<input type="checkbox"/>	
	6290.02	Overdose/Poisoning	<input checked="" type="checkbox"/>	<input type="checkbox"/>	
	6291.01	Pesticide Poisoning	<input type="checkbox"/>	<input type="checkbox"/>	8/ 6/2003
	6292.01	Radiation Injury	<input type="checkbox"/>	<input type="checkbox"/>	8/ 6/2003
	6293.01	Smoke Inhalation	<input checked="" type="checkbox"/>	<input type="checkbox"/>	
Trauma (ABCs/Major)	6294.01	C-Spine Clearance	<input type="checkbox"/>	<input type="checkbox"/>	8/ 6/2003
	6295.01	General Trauma Care	<input type="checkbox"/>	<input type="checkbox"/>	8/ 6/2003
Trauma Major	6296.01	Abdominal Trauma	<input type="checkbox"/>	<input type="checkbox"/>	8/ 6/2003
	6297.01	Amputation	<input type="checkbox"/>	<input type="checkbox"/>	8/ 6/2003
	6298.01	Chest Trauma	<input type="checkbox"/>	<input type="checkbox"/>	8/ 6/2003
	6299.01	Extremity Trauma	<input type="checkbox"/>	<input type="checkbox"/>	8/ 6/2003
	6300.01	Head Injury	<input type="checkbox"/>	<input type="checkbox"/>	8/ 6/2003
	6301.01	Pelvic Trauma	<input type="checkbox"/>	<input type="checkbox"/>	8/ 6/2003
	6302.02	Spinal Injury	<input type="checkbox"/>	<input type="checkbox"/>	8/ 6/2003

Category	PDN	Title	Deleted	New	Released
Trauma Minor	6303.01	Back Pain	<input type="checkbox"/>	<input type="checkbox"/>	8/ 6/2003
	6304.01	Fractures/Sprains/Abrasions/Lacerations	<input type="checkbox"/>	<input type="checkbox"/>	8/ 6/2003

TABLE OF CONTENTS

Medical Procedures

Procedure	Title	Deleted	New	Released
6600.01	Blood Glucose Monitoring	<input type="checkbox"/>	<input type="checkbox"/>	10/14/2003
6601.01	Pulse Oximetry	<input type="checkbox"/>	<input type="checkbox"/>	10/31/2003
6602.01	Salbutamol Metered Dose Inhaler (MDI) Adapter	<input type="checkbox"/>	<input type="checkbox"/>	10/14/2003
6603.01	Meconium Suctioning	<input type="checkbox"/>	<input type="checkbox"/>	10/14/2003
6604.02	Deep Suctioning	<input type="checkbox"/>	<input type="checkbox"/>	10/14/2003
6605.02	Magill Forceps	<input type="checkbox"/>	<input type="checkbox"/>	10/14/2003
6606.02	Orotracheal Intubation	<input type="checkbox"/>	<input type="checkbox"/>	10/31/2003
6607.01	Nasotracheal Intubation	<input type="checkbox"/>	<input type="checkbox"/>	10/31/2003
6608.01	Digital Intubation	<input type="checkbox"/>	<input type="checkbox"/>	10/31/2003
6609.04	Melker Cricothyrotomy	<input type="checkbox"/>	<input type="checkbox"/>	2/18/2005
6610.01	Needle Decompression	<input type="checkbox"/>	<input type="checkbox"/>	10/14/2003
6611.02	Electrocardiogram Monitoring/Assessment 12 Lead	<input checked="" type="checkbox"/>	<input type="checkbox"/>	
6612.01	Electrocardiogram Monitoring/Assessment 3 Lead	<input type="checkbox"/>	<input type="checkbox"/>	10/14/2003
6613.02	Emergency Synchronized Cardioversion	<input type="checkbox"/>	<input type="checkbox"/>	4/ 1/2004
6614.02	Transcutaneous Pacing	<input type="checkbox"/>	<input type="checkbox"/>	10/14/2003
6615.01	Intraosseous Infusion	<input type="checkbox"/>	<input type="checkbox"/>	10/14/2003
6616.01	Saline Lock	<input type="checkbox"/>	<input type="checkbox"/>	10/14/2003
6617.01	Venous Access	<input type="checkbox"/>	<input type="checkbox"/>	10/14/2003
6618.02	Restraints	<input type="checkbox"/>	<input type="checkbox"/>	4/ 1/2004
6619.01	Activated Charcoal	<input checked="" type="checkbox"/>	<input type="checkbox"/>	
6620.02	Esophageal Detector Device - Toomy Syringe	<input type="checkbox"/>	<input type="checkbox"/>	10/14/2003
6621.01	Splinting Extremity	<input type="checkbox"/>	<input type="checkbox"/>	10/14/2003
6622.01	Splinting - Cervical Spine	<input type="checkbox"/>	<input type="checkbox"/>	10/14/2003
6623.01	Spine Immobilization	<input type="checkbox"/>	<input type="checkbox"/>	10/14/2003
6624.02	Helmet Removal	<input type="checkbox"/>	<input type="checkbox"/>	10/14/2003
6625.02	Medication Administration - Endotracheal	<input type="checkbox"/>	<input type="checkbox"/>	10/31/2003
6626.01	Medication Administration - Intraosseous	<input type="checkbox"/>	<input type="checkbox"/>	10/31/2003
6627.01	Medication Administration - Intramuscular	<input type="checkbox"/>	<input type="checkbox"/>	10/14/2003
6628.01	Medication Administration - Intravenous	<input type="checkbox"/>	<input type="checkbox"/>	10/14/2003
6629.01	Medication Administration - Nebulization	<input type="checkbox"/>	<input type="checkbox"/>	10/14/2003

Procedure	Title	Deleted	New	Released
6630.02	Medication Administration - Rectal	<input type="checkbox"/>	<input type="checkbox"/>	10/14/2003
6631.01	Medication Administration - Subcutaneous Injection	<input type="checkbox"/>	<input type="checkbox"/>	10/14/2003
6632.01	Medication Administration - P.O. (Oral)	<input type="checkbox"/>	<input type="checkbox"/>	10/14/2003
6633.04	Manual Defibrillation	<input type="checkbox"/>	<input type="checkbox"/>	2/18/2005
6634.03	Automated External Defibrillation	<input type="checkbox"/>	<input type="checkbox"/>	10/25/2004
6635.01	External Jugular Intravenous Technique	<input type="checkbox"/>	<input type="checkbox"/>	10/14/2003
6636.01	End Tidal CO2 Detection	<input type="checkbox"/>	<input type="checkbox"/>	10/31/2003
6637.01	Decontamination	<input type="checkbox"/>	<input type="checkbox"/>	10/14/2003
6638.02	Intravenous Pumps (Baxter)	<input type="checkbox"/>	<input type="checkbox"/>	10/14/2003
6639.02	Vagal Manoeuvres	<input type="checkbox"/>	<input type="checkbox"/>	10/14/2003
6640.00	Surgical Cricothyrotomy	<input checked="" type="checkbox"/>	<input type="checkbox"/>	
6641.03	Semi-Automated External Defibrillation - Pediatric	<input type="checkbox"/>	<input type="checkbox"/>	10/25/2004
6642.02	Semi-Automated Post First Response Defibrillation	<input type="checkbox"/>	<input type="checkbox"/>	10/14/2003
6643.01	Dry Saline Dressing Changes	<input checked="" type="checkbox"/>	<input type="checkbox"/>	
6644.01	End Tidal CO2 Detector (Easy Cap II, Pedi Cap)	<input type="checkbox"/>	<input type="checkbox"/>	12/12/2003
6645.01	Needle Cricothyrotomy - Pediatric	<input type="checkbox"/>	<input type="checkbox"/>	10/31/2003
6646.00	Positive End Expiratory Pressure (PEEP) Valve	<input type="checkbox"/>	<input checked="" type="checkbox"/>	12/12/2003
6647.00	12 Lead ECGs - Acquisition	<input type="checkbox"/>	<input checked="" type="checkbox"/>	12/12/2003
6648.00	Central-Venous-Catheter Access	<input type="checkbox"/>	<input checked="" type="checkbox"/>	12/12/2003

TABLE OF CONTENTS
Medical Medications

Medication	Title	Deleted	New	Released
6900.02	Adenosine	<input type="checkbox"/>	<input type="checkbox"/>	7/20/2005
6903.01	Acetylsalicylic Acid (ASA)	<input type="checkbox"/>	<input type="checkbox"/>	10/14/2003
6905.01	Charcoal	<input checked="" type="checkbox"/>	<input type="checkbox"/>	
6906.02	Atropine	<input type="checkbox"/>	<input type="checkbox"/>	2/18/2005
6909.03	Bicarb (Sodium Bicarbonate)	<input type="checkbox"/>	<input type="checkbox"/>	7/15/2004
6912.01	Calcium Chloride (CaCL2)	<input type="checkbox"/>	<input type="checkbox"/>	10/14/2003
6915.01	D50	<input type="checkbox"/>	<input type="checkbox"/>	10/14/2003
6918.01	Diazepam (Valium)	<input type="checkbox"/>	<input type="checkbox"/>	10/14/2003
6921.01	Dimenhydrinate (Gravol)	<input type="checkbox"/>	<input type="checkbox"/>	12/12/2003
6924.01	Diphenhydramine (Benadryl)	<input type="checkbox"/>	<input type="checkbox"/>	10/14/2003
6927.01	Dopamine	<input type="checkbox"/>	<input type="checkbox"/>	10/14/2003
6930.02	Epinephrine (Adrenaline)	<input type="checkbox"/>	<input type="checkbox"/>	10/25/2004
6933.01	Furosemide (Lasix)	<input type="checkbox"/>	<input type="checkbox"/>	10/14/2003
6936.01	Glucagon	<input type="checkbox"/>	<input type="checkbox"/>	10/14/2003
6939.02	Haloperidol (Haldol)	<input type="checkbox"/>	<input type="checkbox"/>	7/20/2005
6942.01	Heparin	<input type="checkbox"/>	<input type="checkbox"/>	10/14/2003
6945.01	Ipratropium (Atrovent)	<input type="checkbox"/>	<input type="checkbox"/>	10/14/2003
6948.01	Lidocaine (Xylocaine)	<input type="checkbox"/>	<input type="checkbox"/>	10/14/2003
6951.01	Magnesium Sulphate	<input type="checkbox"/>	<input type="checkbox"/>	10/14/2003
6954.02	Midazolam (Versed)	<input type="checkbox"/>	<input type="checkbox"/>	7/20/2005
6957.01	Morphine	<input type="checkbox"/>	<input type="checkbox"/>	10/31/2003
6960.02	Naloxone (Narcan)	<input type="checkbox"/>	<input type="checkbox"/>	10/25/2004
6963.02	Nitroglycerin (N/G)	<input type="checkbox"/>	<input type="checkbox"/>	12/12/2003
6966.01	Oxygen	<input type="checkbox"/>	<input type="checkbox"/>	10/14/2003
6969.01	Oxytocin (Syntocinon)	<input type="checkbox"/>	<input type="checkbox"/>	10/14/2003
6972.02	Racemic Epinephrine	<input type="checkbox"/>	<input type="checkbox"/>	4/ 1/2004
6975.01	Salbutamol	<input type="checkbox"/>	<input type="checkbox"/>	10/14/2003
6978.01	Thiamine	<input type="checkbox"/>	<input type="checkbox"/>	10/14/2003
6981.01	Topical Anaesthetic Eye Drops	<input type="checkbox"/>	<input type="checkbox"/>	10/14/2003