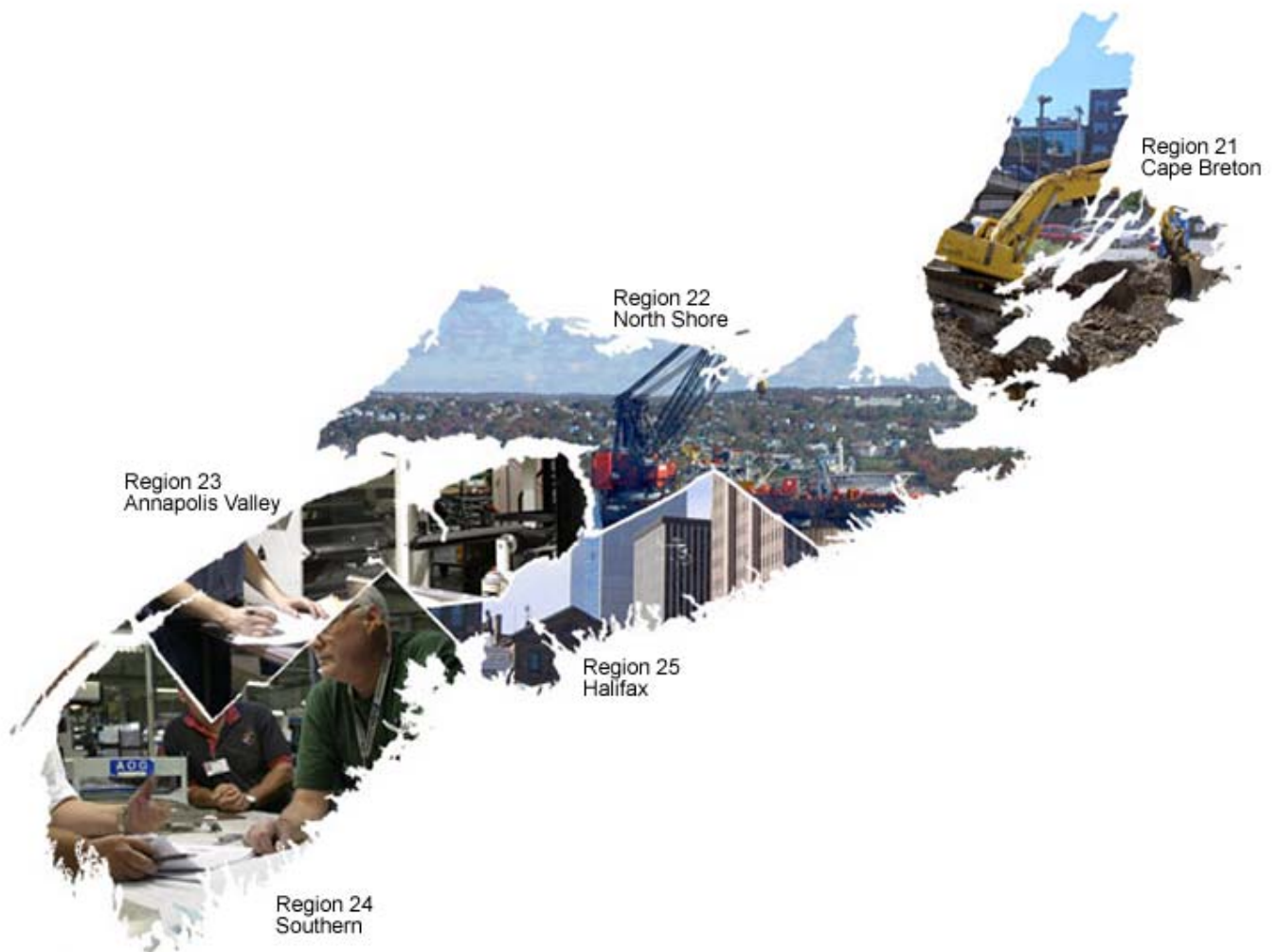


Labour Market Monthly

May 2007




NOVA SCOTIA

Finance
Economics and Statistics

Inquiries or suggestions with regards to the *Labour Market Monthly* or data contained within are welcome and should be directed to:

Bill Steele
Economics & Statistics Division
Nova Scotia Department of Finance
1723 Hollis Street, PO Box 187
Halifax, Nova Scotia, B3J 2N3

Telephone: (902) 424-6131
Facsimile: (902) 424-0714
E-mail: steelewrnsstats@gov.ns.ca
Web Site: <http://www.gov.ns.ca/finance/statistics/agency/>

Nova Scotia Labour Market Monthly

May 2007

Economics & Statistics Division
Nova Scotia Department of Finance
1723 Hollis Street, PO Box 187
Halifax, Nova Scotia, B3J 2N3

Telephone: (902) 424-6131
Facsimile: (902) 424-0714
E-mail: nsstats@gov.ns.ca
Web Site: <http://www.gov.ns.ca/finance/statistics/agency/>

ISSN 1718-5521 (Online)

Table of Contents

| | |
|--|-----------|
| Introduction | 1 |
| Highlights | 3 |
| Feature | 7 |
| Other Key Employment Indicators | 9 |
| Appendix I – Statistical Tables | 15 |
| Appendix II – Glossary | 25 |

Introduction

About the Labour Market Monthly

The *Labour Market Monthly*¹, produced monthly by the Economics & Statistics Division of the Nova Scotia Department of Finance, is based primarily on data from the *Labour Force Survey (LFS)*, a household survey carried out monthly by Statistics Canada. The *LFS* is a sample of individuals who are representative of the civilian, non-institutionalised population 15 years of age or older in Canada's ten provinces. Specifically excluded from the coverage of the *LFS* are residents of the Territories, persons living on Indian Reserves, full-time members of the Canadian Armed Forces and institutional residents. These groups represent an exclusion of approximately 2 per cent of the population aged 15 or over. As of January 2006, the sample size has been approximately 53,372 households across Canada, with 2,873 of those in Nova Scotia.

Since its inception in 1945, the objectives of the *LFS* have been to divide the working-age population into three mutually exclusive classifications—employed, unemployed and not in the labour force—and to provide descriptive and explanatory data on each of these categories. Data from the *Survey* provide information on major labour market trends such as shifts in employment across industrial sectors, hours worked, labour force participation and employment rates.

The *Labour Market Monthly* contains: 1) year-to-date *LFS* highlights; 2) summary tables of selected labour force characteristics including labour force, employment, unemployment, unemployment rate and participation rate for Canada, the provinces, and CMAs; 3) a feature article; and 4) a selection of additional

key employment indicators obtained from other Statistics Canada surveys.

The *Labour Market Monthly* emphasizes the Nova Scotia employment situation and includes tables for Nova Scotia, its economic regions, and the Metropolitan Halifax area. The *Labour Force Monthly* coincides with Statistics Canada's Labour Force Survey release dates and will be available on our web site that day:

[http://www.gov.ns.ca/finance/publish/publicatio
nsb.asp?id=Pub19](http://www.gov.ns.ca/finance/publish/publicatio/nsb.asp?id=Pub19)

Specific release dates each month are noted below:

Labour Force Survey Release Dates 2007

| Data for: | Release Date: |
|------------------|----------------------|
| January | February 9, 2007 |
| February | March 9, 2007 |
| March | April 5, 2007 |
| April | May 11, 2007 |
| May | June 8, 2007 |
| June | July 6, 2007 |
| July | August 10, 2007 |
| August | September 7, 2007 |
| September | October 5, 2007 |
| October | November 2, 2007 |
| November | December 7, 2007 |
| December | January 11, 2008 |

Source: Statistics Canada, Catalogue No. 71-001-XIE;
<http://www.statcan.ca/english/Release/index.htm>

¹ Effective March 10, 2006, the *Labour Market Report* replaces the former *Employment Situation Report* and *Labour Market Report* of the Economics & Statistics Division.

Highlights

LFS Release – May 2007

(June 2007 will be released July 6, 2007)

Refer to *Appendix I* for a series of statistical tables indicating key labour force characteristics for current month, last month and same month a year ago:

Employment Situation:

- Table 1 – Basic Characteristics, Canada/Provinces
- Table 2 – NS Economic Regions/Halifax CMA
- Table 3 – Job Tenure, Canada/Provinces
- Table 4 – Employment by Sector, Canada & NS
- Table 5 – CMAs, Canada

Appendix II provides a glossary of definitions, concepts/methods and sources associated with the labour market information covered in the *Labour Market Monthly* publication.

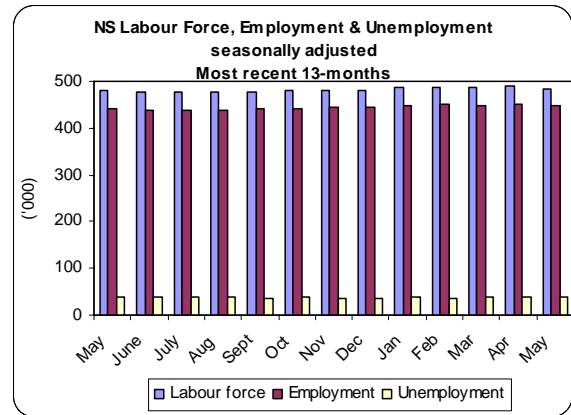
The Daily released by Statistics Canada today highlighted the following related to Nova Scotia:

"Employment in Nova Scotia fell in May (-4,400), with losses spread across several sectors. The unemployment rate held steady at 8.0 per cent, due to a sharp decline in labour force participation."

Seasonally Adjusted (month-over-month and year-over-year)

In Nova Scotia May 2007, labour force declined 1.0 per cent over April 2007 to 485,300 and increased 0.7 per cent over May 2006. Employment declined 1.0 per cent over April 2007 to 446,500 and increased 0.8 per cent over May 2006. Unemployment declined 1.5 per cent over April 2007 to 38,800 and increased 0.3 per

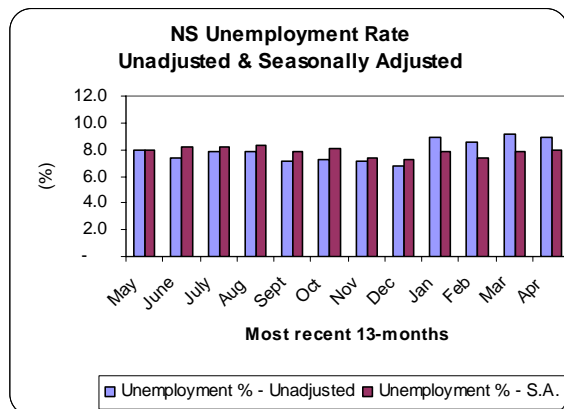
cent over May 2006. Unemployment rate remained unchanged over April 2007 at 8.0 per cent.



Source: Statistics Canada, *Labour Force Survey*, Catalogue No. 71-001-XIE

In Canada May 2007, labour force remained unchanged over April 2007 at 17.9 million and increased 1.7 per cent over May 2006. Employment increased 0.1 per cent over April 2007 to 16.8 million and increased 1.8 per cent over May 2006. Unemployment declined 1.2 per cent over April 2007 to 1.1 million and increased 0.6 per cent over May 2006. Unemployment rate remain unchanged over April 2007 at 6.1 per cent.

In Nova Scotia's largest labour market, Halifax Census Metropolitan Area (CMA), on a seasonally adjusted three-month moving average basis, the unemployment rate in May 2007 was 5.3 per cent, an increase of 0.6 percentage points from April 2007 but unchanged from May 2006. In May 2007, the Halifax CMA had the second lowest rate in the Atlantic Provinces, it ranked lower than centres in central Canada, and was somewhat higher than centres in Western Canada. The lowest unemployment rate was in Calgary at 3.5 per cent.



Source: Statistics Canada, *Labour Force Survey*, Catalogue No. 71-001-XIE

Year-to-date¹ (January to May)

The results for the first five months of 2007 reveal continued employment growth for Nova Scotia but at a slower pace. For the first quarter of 2007, the employment growth rate stood at 1.5 per cent compared to the same period in 2006, and by April, the year-to-date rate was down to 1.4 per cent. For May, the year-to-date growth rate is 1.3 per cent.

This slower pace may reflect, to some degree seasonally factors as Statistics Canada has recently revised the seasonally adjusted estimates using the latest seasonal factors going back three years (January 2004 onwards). For the month of May over April this year, seasonally adjusted employment dropped by 1.0 per cent which will have some seasonal smoothing adjustments in the final estimates.

Strong growth for full-time employment at 2.4 per cent overrides the decline of 3.5 percent for part-time employment, resulting in the net positive gain for total employment.

For the first five months of 2007, the labour supply (labour force) increased 1.0 per cent. The labour participation rate reflects the increase in labour supply with an increase of 0.6 percentage points to 63.9 per cent. Thus, the net impact of labour demand, growing at a faster pace than

labour supply, has resulted in a drop of 0.2 percentage points in the seasonally adjusted unemployment rate to 7.8 per cent.

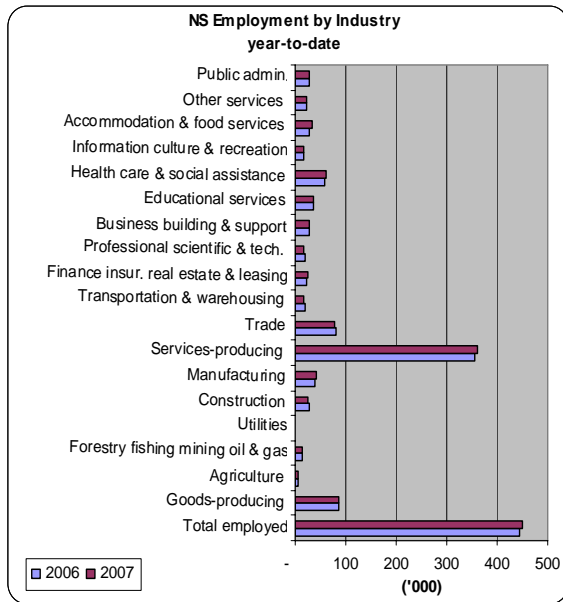
Labour Force Basic Characteristics, Nova Scotia Year-to-date (average of Seasonally adjusted data)

| | Jan-May 2006 | Jan-May 2007 |
|---------------------|-----------------|-----------------|
| Population ('000) | 762.4 | 763.6 |
| Labour Force ('000) | 482.1 | 487.1 |
| Employment ('000) | 443.4 | 449.0 |
| Full-time ('000) | 359.2 | 367.8 |
| Part-time ('000) | 84.2 | 81.2 |
| Unemployment ('000) | 38.7 | 38.1 |
| Unemployment (%) | 8.0 | 7.8 |
| Participation (%) | 63.2 | 63.8 |
| Employment (%) | 58.1 | 58.8 |

Source: Compiled by Economics & Statistics Division, NS Department of Finance, using Statistics Canada LFS data.

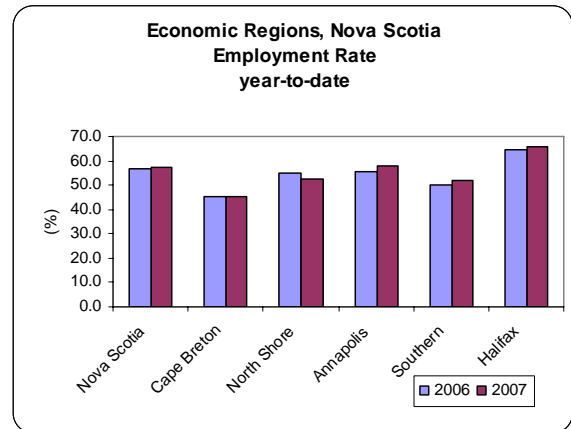
A review of employment growth by industries (seasonally adjusted), for the first five months of 2007, indicates that employment growth was concentrated in selected industries. Manufacturing; Utilities; Finance, Insurance and Real Estate; Health and Social Assistance; Educational Services; Information, Culture and Recreation; and Accommodation and Food Services all showed healthy employment growth. Forestry, Fishing and Mining; Construction; Retail and Wholesale Trade; Transportation and Warehousing; Professional, Scientific and Technical; Business, Building and other Support; and Public Administration sectors all reported declines. Manufacturing helped to support the slight increase in the employment growth of 0.5 per cent for all industries in the Goods Producing sector. Employment growth in the Service Producing sector for the same period was up 1.5 per cent.

¹ Average of the year-to-date seasonal data unless otherwise stated.



Source: Compiled by Economics & Statistics Division, NS Department of Finance, using Statistics Canada LFS data.

A geographical review of employment growth for the five months of 2007, based on the 3-month-moving average estimates within the province, reveals a wide distribution of employment gains. The only sub-provincial region to report a fall in employment was the Northern Mainland region.



Source: Compiled by Economics & Statistics Division, NS Department of Finance, using Statistics Canada LFS data.

Monthly seasonally adjusted estimates from the Labour Force Survey have been revised using the latest seasonal factors, going back three years (January 2004 onwards). They are now available on CANSIM (Tables 282-0087 to 282-0094).

Feature – Multiple Jobholders

Multiple Jobholders Defined

“Multiple job holders are persons who, during the reference week of the LFS, were employed in two or more jobs simultaneously. This group is sometimes referred to as “Moonlighters. When a respondent holds more than one job or business, the job or business involving the greatest number of usual hours worked is considered to be the main job. The full or part-time status and industry and occupation information available from the survey refers to the main job, as does information for employees on wages, union status, job permanency and workplace size.”¹

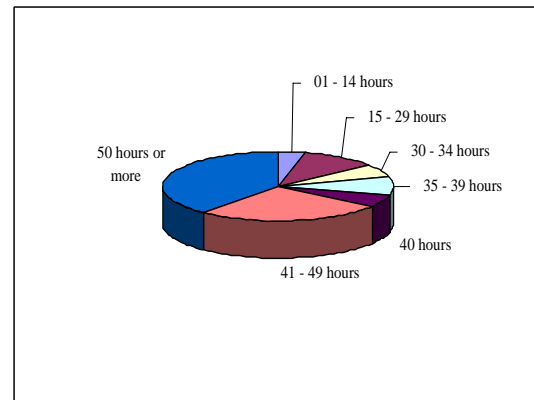
Overview of Multiple Jobholders in Nova Scotia 1987 to 2006

- Multiple jobholders as percent of total employed are increasing
- Generally, multiple jobholders worked as many or more hours in 2006 as compared to 1987—with the exception of 50 plus hour range
- Multiple jobholders are most often in service-producing sector (in educational services; health care and social assistance; and trade, in particular)
- Strongest nominal growth in multiple jobholders by occupation is in sales and service occupations; followed by business, finance and administrative occupations; management occupations; and health occupations
- In 1987 and 2006, the occupations holding the most significant share of employed multiple jobholders were in sales and service (31.0 per cent).

The number of people employed in Nova Scotia grew 23.1 per cent or by 82,800 between 1987 and 2006 to 441,800. During the same period, the total number of multiple jobholders increased 65.1 per cent or by 8,400 to 21,300. As a result, the proportion of all employed persons in Nova

Scotia working multiple jobs grew, from 3.6 per cent in 1987 to 4.8 per cent in 2006.

Multiple Jobholders, by All Hours Worked, Nova Scotia 2006

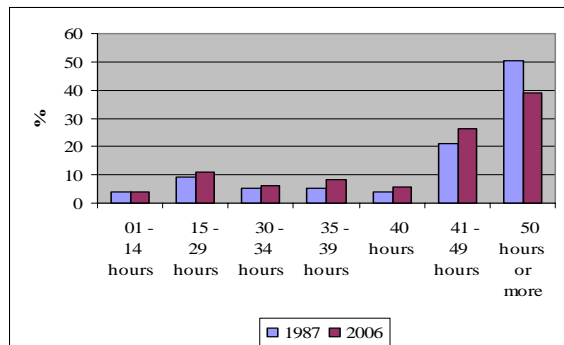


Source: Statistics Canada, Labour Force Historical Review, 2006, CD-ROM 71F0004XCB

Although the number of multiple jobholders working over 40 hours per week continues to represent a majority of all multiple jobholders, its share declined between 1987 to 2006, from 71.3 per cent to 65.3 per cent respectively, due to the reduction in the numbers working 50 hours or more. Of all persons in Nova Scotia working multiple jobs during 2006, 3.8 per cent worked 1-14 hours, 10.8 per cent worked 15-29 hours, 6.1 per cent worked 30-34 hours, 8.5 per cent worked 35-39 hours, 5.6 per cent worked 40 hours, 26.2 per cent worked 41-49 hours and 39.0 per cent worked 50 hours or more per week. In comparison, in 1987, 3.9 per cent worked 1-14 hours, 9.3 per cent worked 15-29 hours, 5.4 per cent worked 30-34 hours, 5.4 per cent worked 35-39 hours, 3.9 per cent worked 40 hours, 20.9 per cent worked 41-49 hours and 50.4 per cent worked 50 hours or more.

¹ Statistics Canada, Guide to the Labour Force Survey, 2007, Catalogue No. 71-543-GIE, Section 3, Dictionary of concepts and definitions, pp. 14.

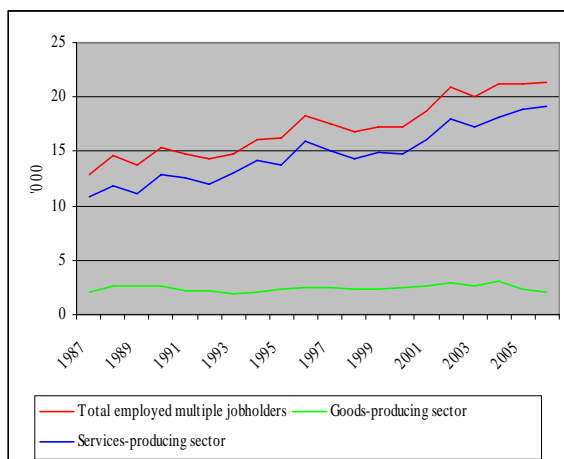
**Percentage of Total Multiple Jobholders
by All Hours Worked
Nova Scotia
1987 and 2006**



Source: Statistics Canada, Labour Force Historical Review, 2006, CD-ROM 71F0004XCB

Between 1987 and 2006, growth in the number of multiple jobholders was flat in the goods-producing sector, as the slight increase in multiple jobholders within construction industries was balanced by decline within manufacturing industries. Thus, all the increase in the number of multiple jobholders during this period was attributable to the service-producing sector.

**Multiple Jobholders,
by Goods & Service-Producing Sectors
Nova Scotia
1987 to 2006**



Source: Statistics Canada, Labour Force Historical Review, 2006, CD-ROM 71F0004XCB

In both nominal and percentage terms, the most significant growth, from 1987 and 2006, in

multiple jobholders occurred in health care and social assistance industries, and in trade² industries, with an increase of 3,000 and 1,700 multiple jobholders respectively.

The industries comprising the greatest share of total employed multiple jobholders in 1987 were led by educational services (17.1 per cent), trade (14.0 per cent) and health care and social assistance (10.1 per cent) as compared in 2006 to health care and social assistance (20.2 per cent, trade (16.4 per cent) and educational services (14.1 per cent).

Between 1987 and 2006, the strongest nominal growth in multiple jobholders by occupation was in sales and service (increase of 2,600 more multiple jobholders); followed by business, finance and administrative (an additional 1,400 multiple jobholders); management (an additional 1,300 jobholders); and health (1,300 more multiple jobholders).

The top ranking occupations comprising the greatest share of total employed multiple jobholders in 1987 were sales and service (31.0 per cent); trades, transport and equipment operators and related (14.7 per cent); occupations in social science, education, government service and religion (12.4 per cent) and business, finance and administrative (11.6 per cent). In 2006 the leading occupations comprising the greatest share of total employed multiple jobholders were sales and service (31.0 per cent), occupations in social science, education, government service and religion (15.0 per cent); business, finance and administrative (13.6 per cent; and management (11.3 per cent).

² Trade refers to both retail and wholesale trade.

Other Key Employment Indicators

Along with the monthly Labour Force Survey, several other data sources provide an overview of changes occurring in the labour market of the province. The following tables reflect some of those activities.

Total Wages & Salaries

2nd quarter 2007 will be released August 31, 2007)

Annual (revised)

In 2006, total wages and salaries were \$14,682.7 billion in Nova Scotia. This represented a growth of 4.2 per cent over 2005. Canada's total wages and salaries figure, of \$641,890.0 billion in 2006, exhibited a 6.1 per cent increase over a year earlier. In 2006, the Nova Scotia figure represented 2.3 per cent of the national total.

Total Wages & Salaries, Canada & Nova Scotia - Annual - (\$billions)

| | 2005 ^f | 2006 ^f |
|-------------|-------------------|-------------------|
| Canada | 604,804.3 | 641,890.0 |
| Nova Scotia | 14,084.9 | 14,682.7 |

Labour income estimates are based on the North American Industry Classification System (NAICS) and are released quarterly in conjunction with the National Income and Expenditure Accounts estimates.

Source: Statistics Canada, Catalogue No. 13F0016XPB; CANSIM Table 382-0006

In 2006, \$3,147.3 billion of Nova Scotia's total wages and salaries was from the goods producing sector and 11,535.5 billion was from the service producing sector, representing 21.4 per cent and 78.6 per cent, respectively, of the total. Manufacturing industries were the major component within the goods producing sector (47.2%). The greatest contributors to the service producing sector—professional and personal service industries, and trade—at 19.5 per cent and 17.7 per cent, respectively.

Wages & Salaries – Nova Scotia (NAICS-based) - Annual -

| Industry | (\$billions – actual) | | % Change |
|-------------------------------------|-----------------------|-------------------|-------------|
| | 2005 ^f | 2006 ^f | |
| All Goods Producing | 3,087 | 3,147 | 2.0 |
| Agric., Forestry, Fishing & Hunting | 334 | 311 | -6.8 |
| Mining & Oil & Gas | 149 | 161 | 8.0 |
| Manufacturing | 1,493 | 1,486 | -0.4 |
| Construction | 974 | 1,049 | 7.7 |
| Utilities | 137 | 139 | 1.6 |
| All Service Producing | 10,998 | 11,535 | 4.9 |
| Trade | 1,949 | 2,047 | 5.0 |
| Transportation & Storage | 657 | 678 | 3.2 |
| Information & Cultural | 342 | 358 | 4.5 |
| Finance & Real Estate | 958 | 1,006 | 4.9 |
| Professional & Personal Service | 2,121 | 2,244 | 5.8 |
| Educational Services | 1,293 | 1,360 | 5.1 |
| Health Care & Social Asst. | 1,697 | 1,804 | 6.3 |
| Public Administration | 1,980 | 2,039 | 2.5 |

Numbers may not total due to rounding

Q – Quarter

Source: Statistics Canada, *Estimates of Labour Income*, 13F0016XPB; CANSIM Table 382-0006

Year-to-date (January to March)

In January to March 2007, total wages and salaries were \$3,654.3 billion in Nova Scotia. This represented a growth of 4.9 per cent over the same period in 2006. Canada's total wages and salaries figure, of \$164,143.8 billion in January to March 2007, exhibited a 6.4 per cent increase over a year earlier. In the first quarter of 2007, the Nova Scotia figure represented 2.2 per cent of the national total.

Total Wages & Salaries, Canada & Nova Scotia - Year-to-date - (\$billions)

| | 2006 | 2007 |
|-------------|-----------|-----------|
| Canada | 154,306.7 | 164,143.8 |
| Nova Scotia | 3,484.2 | 3,654.3 |

Labour income estimates are based on the North American Industry Classification System (NAICS) and are released quarterly in conjunction with the National Income and Expenditure Accounts estimates.

Source: Statistics Canada, Catalogue No. 13F0016XPB; CANSIM Table 382-0006

In January to March 2007, \$739 billion of Nova Scotia's total wages and salaries was from the goods producing sector and \$2,915 billion was from the service producing sector, representing 20.2 per cent and 79.8 per cent, respectively, of the total. Manufacturing industries were the major component within the goods producing sector (49.8%). The greatest contributors to the service producing sector—professional and personal service industries, and trade—at 19.1 per cent and 17.5 per cent, respectively.

rose \$22.86 or 3.1 per cent, to \$763.60 per week. Nova Scotia's January-March year-to-date average weekly earnings were 87.9 per cent of the Canadian average.

In Nova Scotia average weekly employment was 371,628 (all employees as reported in SEPH) in January to March 2007, a 0.9 per cent decrease from January to March 2006. In comparison, Canada's weekly employment was 14.0 million, an increase of 2.3 per cent from the same period in 2006.

**Wages & Salaries – Nova Scotia
(NAICS-based)
- Year-to-date -
(\$billions – actual)**

| <i>Industry</i> | <i>2006</i> | <i>2007</i> | <i>% Change</i> |
|-------------------------------------|--------------|--------------|---------------------|
| All Goods Producing | 705 | 739 | 4.9 |
| Agric., Forestry, Fishing & Hunting | 63 | 61 | -3.0 |
| Mining & Oil & Gas | 37 | 41 | 9.1 |
| Manufacturing | 358 | 368 | 2.7 |
| Construction | 211 | 233 | 10.2 |
| Utilities | 36 | 38 | 5.8 |
| All Service Producing | 2,780 | 2,915 | 4.9 |
| Trade | 488 | 509 | 4.3 |
| Transportation & Storage | 163 | 170 | 3.9 |
| Information & Cultural | 90 | 94 | 3.9 |
| Finance & Real Estate | 247 | 260 | 5.3 |
| Professional & Personal Service | 517 | 557 | 7.8 |
| Educational Services | 345 | 356 | 3.2 |
| Health Care & Social Asst. | 438 | 453 | 3.6 |
| Public Administration | 491 | 516 | 5.1 |

Numbers may not total due to rounding
Q – Quarter

Source: Statistics Canada, *Estimates of Labour Income*, 13F0016XPB; CANSIM Table 382-0006

Average Weekly Earnings (including overtime)

(April 2007 will be released June 26, 2007)

Year-to-date (January to March)

On March 30, 2007, historical revisions to the average weekly earnings data series, back to January 2001, were released.

In January-March 2007, the average earnings for all employees in Nova Scotia increased \$16.75, or 2.6 per cent, over the same period in 2006 to \$671.33 per week. In comparison, the average earnings for all employees in Canada

**Average Weekly Earnings Data
Canada and Nova Scotia
- Year-to-date^P -
(all employees)**

| | Canada | Nova Scotia |
|---|---------------|--------------------|
| Average Weekly Earnings – Industrial Aggregate (includes Overtime) (\$) | | |
| Jan-Mar '06 | 740.74 | 654.58 |
| Jan-Mar '07 | 763.60 | 671.33 |
| Average Weekly Employment (#) | | |
| Jan-Mar '06 | 13,673,167 | 375,161 |
| Jan-Mar '07 | 13,984,122 | 371,628 |

^P preliminary

Source: Statistics Canada, Employment, Earnings & Hours, Catalogue No. 72-002-XIB; CANSIM Tables 281-0023 and 281-0026

Year-to-date 2007 average weekly earnings in Nova Scotia's goods producing sector increased 3.4 per cent over the same period in 2006 to \$814.26, while in the service producing sector, average weekly earnings increased 2.8 per cent to \$646.11. In industries for which data is available, year-to-date 2007 average weekly earnings ranged from \$296.85 in accommodation and food services industries to \$896.73 in public administration.

**Average Weekly Earnings – by Industry
Nova Scotia
- Year-to-date^P
(including overtime)
(NAICS-based) (\$)**

| Industry | | | % |
|---|---------------|---------------|------------|
| | 2006 | 2007 | Change |
| Industrial Aggregate | 654.58 | 671.33 | 2.6 |
| <i>Goods Producing</i> | 787.14 | 814.26 | 3.4 |
| Construction | 731.52 | 773.65 | 5.8 |
| Manufacturing | 793.87 | 811.41 | 2.2 |
| <i>Service Producing</i> | 628.78 | 646.11 | 2.8 |
| Trade | 512.50 | 526.90 | 2.8 |
| Transportation & Warehousing | | | |
| | 748.87 | 751.97 | 0.4 |
| Information & Culture | 815.43 | 837.24 | 2.7 |
| Finance & Insurance | 861.12 | 854.88 | -0.7 |
| Professional, Scientific & Technical | | | |
| | 824.85 | 845.12 | 2.5 |
| Admin., Support, Waste Mngt. & Remediation | | | |
| | 501.09 | 546.76 | 9.1 |
| Educational Services | 693.95 | 730.88 | 5.3 |
| Health Care & Social Assistance | | | |
| | 686.62 | 682.02 | -0.7 |
| Arts, Entertainment & Recreation | | | |
| | 303.56 | 33.42 | 6.5 |
| Accommodation & Food Services | | | |
| | 273.91 | 296.85 | 8.4 |
| Other Services (excl. Public Admin.) | | | |
| | 476.62 | 501.98 | 5.3 |
| Public Administration | 865.41 | 896.73 | 3.6 |

^P preliminary

Source: Statistics Canada, Employment, Earnings & Hours, Catalogue No. 72-002-XIB; CANSIM Table 281-0026

Employment Insurance

(April 2007 will be released June 26, 2007)

Year-to-date (January to March)

During January-March 2007, there was a monthly average of 48,390 beneficiaries in Nova Scotia that received regular EI benefits. This figure was 5.2 per cent lower than in January-March 2006. Nationwide, there was an average of 892,383 beneficiaries or 6.0 per cent fewer than the January-March 2006 monthly average.

**EI Beneficiaries and Benefits
Canada and Nova Scotia
- Year-to-date^P**

| | Canada | | Nova Scotia | |
|-------------|------------------------|----------------------|------------------------|----------------------|
| | Avg. ¹ # | Total \$ Millions | Avg. ¹ # | Total \$ Millions |
| Jan-Mar '06 | 949,360 | 4,374.3 | 51,053 | 221.1 |
| Jan-Mar '07 | 892,383 | 4,329.4 | 48,390 | 216.5 |

¹ Preliminary year-to-date monthly average

Source: Statistics Canada, CANSIM Table 276-0001 and 276-0005

In Nova Scotia a total of \$216.5 million was paid in EI benefit payments during January-March 2007. This figure was 2.1 per cent lower than in the same period of 2006. Nationwide, there was \$4.3 billion paid in EI benefit payments nationwide during January-March 2007, or 1.0 per cent less than in January-March 2006.

Public Sector Employment – Nova Scotia

2nd quarter 2007 will be released August 31, 2007

Annual

Note that with the release of first quarter 2007 preliminary figures from the Statistics Canada *Public Sector FMS Reports*, revisions were released for the series from 2001 to 2006. The revised data indicates that there was an average of 119,501 public sector employees in Nova Scotia in 2006, an increase of 1.5 per cent over 2005. The government portion increased 1.3 per cent to 111,904, while the business enterprises portion rose 4.1 per cent to 7,597. The federal government figure rose 0.7 per cent to 24,145. The military component of federal employees in Nova Scotia decreased 2.9 per cent to 10,520 in 2006.

Public Sector Employment – Nova Scotia
- Annual -
(number)

| | 2005 ^r | 2006 ^r | % Change |
|--|-------------------|-------------------|-------------|
| Government | | | |
| Federal (incl. Military) | 23,976 | 24,145 | 0.7 |
| <i>Military</i> | 10,830 | 10,520 | -2.9 |
| Provincial General | 11,475 | 11,520 | 0.4 |
| Health & Social Services | 29,746 | 29,601 | -0.5 |
| Universities & Colleges | 13,148 | 13,501 | 2.7 |
| Local General | 10,878 | 11,316 | 4.0 |
| School Boards | 21,197 | 21,820 | 2.9 |
| Total Government | 110,418 | 111,904 | 1.3 |
| Government Business Enterprises | 7,297 | 7,597 | 4.1 |
| Federal | 4,483 | 4,734 | 5.6 |
| Provincial | 2,325 | 2,374 | 2.1 |
| Local | 488 | 489 | 0.2 |
| Total Public Sector | 117,715 | 119,501 | 1.5 |

Figures by jurisdiction do not always add to published totals due to rounding.

Quarterly data is not comparable to annual data due to normal seasonal changes in some groups, e.g., universities, schools.

Source: Statistics Canada, Public Institutions Division, *Public Sector FMS Reports*; CANSIM Tables 183-0002 and 183-0004.

Public Sector Wages & Salaries – Nova Scotia
- Annual -
(\$millions)

| | 2005 ^r | 2006 ^r | % Change |
|--|-------------------|-------------------|-------------|
| Government | | | |
| Federal (incl. Military) | 1,463 | 1,488 | 1.7 |
| <i>Military</i> | 646 | 651 | 0.8 |
| Provincial General | 522 | 552 | 5.7 |
| Health & Social Services | 1,145 | 1,221 | 6.6 |
| Universities & Colleges | 508 | 532 | 4.7 |
| Local General | 284 | 298 | 4.9 |
| School Boards | 712 | 752 | 5.6 |
| Total Government | 4,633 | 4,844 | 4.6 |
| Government Business Enterprises | 370 | 394 | 6.5 |
| Federal | 287 | 307 | 7.3 |
| Provincial | 68 | 71 | 4.4 |
| Local | 15 | 15 | 0.0 |
| Total Public Sector | 5,003 | 5,238 | 4.7 |

Q – quarter

Figures by jurisdiction do not always add to published totals due to rounding.

Quarterly data is not comparable to annual data due to normal seasonal changes in some groups, e.g., universities, schools.

Source: Statistics Canada, Public Institutions Division, *Public Sector FMS Reports*; CANSIM Tables 183-0002 and 183-0004.

Public sector wages and salaries increased 4.7 per cent in 2006 over 2005 to \$5.2 billion, with 92.5 per cent of total public sector wages and salaries from total government and 7.5 per cent from government business enterprises.

Year-to-date (January to March)

Data from the Statistics Canada *Public Sector FMS Reports* indicates that, there was an average of 118,176 public sector employees in Nova Scotia during January to March 2007, a decrease of 1.2 per cent over the same period in 2006. The government portion decreased 1.6 per cent to 110,468, while the business enterprises portion rose 4.1 per cent to 7,708. The federal government figure rose 2.2 per cent to 24,252. The military component of federal employees in Nova Scotia increased 0.3 per cent to 10,639 during January to March 2007 as compared to the January to March 2006 period.

Public Sector Employment – Nova Scotia
- Year-to-date^P -
(number)

| | 2006 | 2007 ^P | % Change |
|--|----------------|-------------------|-------------|
| Government | | | |
| Federal (incl. Military) | 23,723 | 24,252 | 2.2 |
| <i>Military</i> | 10,602 | 10,639 | 0.3 |
| Provincial General | 11,287 | 11,370 | 0.7 |
| Health & Social Services | 29,697 | 29,599 | -0.3 |
| Universities & Colleges | 13,819 | 12,904 | -6.6 |
| Local General | 10,921 | 11,078 | 1.4 |
| School Boards | 22,782 | 21,265 | -6.7 |
| Total Government | 112,230 | 110,468 | -1.6 |
| Government Business Enterprises | 7,403 | 7,708 | 4.1 |
| Federal | 4,557 | 4,812 | 5.6 |
| Provincial | 2,360 | 2,410 | 2.1 |
| Local | 485 | 486 | 0.1 |
| Total Public Sector | 119,633 | 118,176 | -1.2 |

Figures by jurisdiction do not always add to published totals due to rounding.

Quarterly data is not comparable to annual data due to normal seasonal changes in some groups, e.g., universities, schools.

Source: Statistics Canada, Public Institutions Division, *Public Sector FMS Reports*; CANSIM Tables 183-0002 and 183-0004.

Public sector wages and salaries decreased 0.6 per cent in 2007 over 2006 to \$1.3 billion, with 92.2 per cent of total public sector wages and salaries from total government and 7.8 per cent from government business enterprises.

Public Sector Wages & Salaries – Nova Scotia
- Year-to-date^P
 (\$millions)

| Government | 2006 | 2007 | % Change |
|--|--------------|--------------|---------------------|
| Federal (incl. Military) | 350 | 367 | 4.7 |
| <i>Military</i> | 158 | 163 | 3.3 |
| Provincial General | 145 | 140 | -3.6 |
| Health & Social Services | 308 | 304 | -1.3 |
| Universities & Colleges | 136 | 127 | -6.5 |
| Local General | 72 | 73 | 1.4 |
| School Boards | 196 | 183 | -6.7 |
| Total Government | 1,208 | 1,195 | -1.1 |
| Government Business Enterprises | 95 | 101 | 6.4 |
| Federal | 74 | 79 | 7.2 |
| Provincial | 18 | 18 | 4.2 |
| Local | 3 | 3 | 2.1 |
| Total Public Sector | 1,303 | 1,296 | -0.6 |

Q – quarter

Figures by jurisdiction do not always add to published totals due to rounding.

Quarterly data is not comparable to annual data due to normal seasonal changes in some groups, e.g., universities, schools.

Source: Statistics Canada, Public Institutions Division, *Public Sector FMS Reports; CANSIM Tables 183-0002 and 183-0004.*

Other Statistics Canada Labour Market Information Released the Past Month

May 15, 2007

- o Canadian Social Trends, No. 83: Study, *Workaholics and Time Perception, 2005*, Catalogue No. 11-008-XWE
- o Workplace and Employee Survey, 2004, Survey No. 2615

May 16, 2007

- o *Employment Services Industry, 2005*, Survey 4718, CANSIM Table 361-0001

May 17, 2007

- o *Workplace and Employee Survey: Electronic Data Dictionary, 2004*, Catalogue No. 71-221-XWE

May 18, 2007

- o Analytical Studies Branch Research Paper Series: *The Changing Role of Education in the Marriage Market: Assortative Marriage in Canada and the United States since the 1970s*, No. 299, Catalogue No. 11F0019M2007299

May 22, 2007

- o Research Paper: *Offshoring and Employment in Canada, Some Basic Facts*, No. 300, Catalogue No. 11F0019MIE2007300

May 23, 2007

- o Perspectives on Labour and Income, Vol. 7, No. 5, *The Busy Lives of Teens*, Catalogue No. 75-001-XWE

May 25, 2007

- o Update on Family and Labour Studies, Winter 2007, *A Comparative Analysis of the Labour Market Impact of International Migration: Canada, Mexico and the United States*, Catalogue No. 89-001-XWE

May 29, 2007

- o *Employment Insurance, March 2007* (preliminary), Survey No. 2604, CANSIM Tables 276-0001 to 276-0006, 276-0009, 276-0011, 276-0015 and 176-0016
- o *Employment, Earnings and Hours, March 2007* (preliminary), Catalogue No. 72-002-XIB
- o Family Income, 2005,

May 30, 2007

- o *Public Sector Employment, 2001 to 2006 (revised) and first Quarter 2007*

(preliminary), Survey 1713, CANSIM Tables 183-0002 and 183-0004

May 31, 2007

- o Neighborhood Income and Demographics, *Income of Individuals, 2005*, Catalogue No. 13C0015; and Economic Dependency Profiles, Catalogue No. 13C0017

June 5, 2007

- o The Teacher's Guide to Data Discovery, Catalogue No. 12-593-XWE

Appendix I - Statistical Tables

Table 1. Basic Characteristics, Canada/Provinces

| Canada | | | | | | | | |
|---------------------------|----------|----------|----------|---------------|---------------------|----------|----------|---------------|
| | Actual | | | | Seasonally Adjusted | | | Annual Change |
| | May 2006 | Apr 2007 | May 2007 | Annual Change | May 2006 | Apr 2007 | May 2007 | |
| Population ('000) | 26,135.8 | 26,475.9 | 26,504.5 | 368.7 | 26,135.8 | 26,475.9 | 26,504.5 | 368.7 |
| Labour Force ('000) | 17,767.6 | 17,699.4 | 18,060.6 | 293.0 | 17,590.0 | 17,890.2 | 17,886.1 | 296.1 |
| Employment ('000) | 16,676.0 | 16,575.7 | 16,963.9 | 287.9 | 16,512.6 | 16,793.2 | 16,802.5 | 289.9 |
| Unemployed ('000) | 1,091.5 | 1,123.7 | 1,096.7 | 5.2 | 1,077.4 | 1,097.0 | 1,083.6 | 6.2 |
| Unemployment Rate (%) | 6.1 | 6.3 | 6.1 | - | 6.1 | 6.1 | 6.1 | - |
| Participation Rate (%) | 68.0 | 66.9 | 68.1 | 0.1 | 67.3 | 67.6 | 67.5 | 0.2 |
| Employment Rate (%) | 63.8 | 62.6 | 64.0 | 0.2 | 63.2 | 63.4 | 63.4 | 0.2 |
| Nova Scotia | | | | | | | | |
| | Actual | | | | Seasonally Adjusted | | | Annual Change |
| | May 2006 | Apr 2007 | May 2007 | Annual Change | May 2006 | Apr 2007 | May 2007 | |
| Population ('000) | 762.4 | 763.6 | 763.7 | 1.3 | 762.4 | 763.6 | 763.7 | 1.3 |
| Labour Force ('000) | 491.0 | 485.6 | 494.4 | 3.4 | 481.8 | 490.3 | 485.3 | 3.5 |
| Employment ('000) | 451.8 | 442.5 | 454.6 | 2.8 | 443.1 | 450.9 | 446.5 | 3.4 |
| Unemployed ('000) | 39.2 | 43.0 | 39.8 | 0.6 | 38.7 | 39.4 | 38.8 | 0.1 |
| Unemployment Rate (%) | 8.0 | 8.9 | 8.1 | 0.1 | 8.0 | 8.0 | 8.0 | - |
| Participation Rate (%) | 64.4 | 63.6 | 64.7 | 0.3 | 63.2 | 64.2 | 63.5 | 0.3 |
| Employment Rate (%) | 59.3 | 57.9 | 59.5 | 0.2 | 58.1 | 59.0 | 58.5 | 0.4 |
| Newfoundland and Labrador | | | | | | | | |
| | Actual | | | | Seasonally Adjusted | | | Annual Change |
| | May 2006 | Apr 2007 | May 2007 | Annual Change | May 2006 | Apr 2007 | May 2007 | |
| Population ('000) | 427.8 | 424.9 | 424.1 | (3.7) | 427.8 | 424.9 | 424.1 | (3.7) |
| Labour Force ('000) | 261.4 | 245.7 | 257.5 | (3.9) | 253.4 | 252.1 | 250.9 | (2.5) |
| Employment ('000) | 220.0 | 207.7 | 222.2 | 2.2 | 216.3 | 219.6 | 218.5 | 2.2 |
| Unemployed ('000) | 41.5 | 38.0 | 35.3 | (6.2) | 37.1 | 32.5 | 32.4 | (4.7) |
| Unemployment Rate (%) | 15.9 | 15.5 | 13.7 | (2.2) | 14.6 | 12.9 | 12.9 | (1.7) |
| Participation Rate (%) | 61.1 | 57.8 | 60.7 | (0.4) | 59.2 | 59.3 | 59.2 | - |
| Employment Rate (%) | 51.4 | 48.9 | 52.4 | 1.0 | 50.6 | 51.7 | 51.5 | 0.9 |
| Prince Edward Island | | | | | | | | |
| | Actual | | | | Seasonally Adjusted | | | Annual Change |
| | May 2006 | Apr 2007 | May 2007 | Annual Change | May 2006 | Apr 2007 | May 2007 | |
| Population ('000) | 112.1 | 112.9 | 113.0 | 0.9 | 112.1 | 112.9 | 113.0 | 0.9 |
| Labour Force ('000) | 79.7 | 75.6 | 78.7 | (1.0) | 77.4 | 77.7 | 76.7 | (0.7) |
| Employment ('000) | 72.7 | 65.8 | 71.8 | (0.9) | 69.6 | 70.4 | 69.0 | (0.6) |
| Unemployed ('000) | 7.0 | 9.8 | 6.9 | (0.1) | 7.7 | 7.3 | 7.7 | - |
| Unemployment Rate (%) | 8.8 | 13.0 | 8.8 | - | 9.9 | 9.4 | 10.0 | 0.1 |
| Participation Rate (%) | 71.1 | 67.0 | 69.6 | (1.5) | 69.0 | 68.8 | 67.9 | (1.1) |
| Employment Rate (%) | 64.9 | 58.3 | 63.5 | (1.4) | 62.1 | 62.4 | 61.1 | (1.0) |

Population is for those 15 years of age and over.

Annual Change is in thousands or percentage points as shown in row headings.

Table 1. Basic Characteristics, Canada/Provinces

| New Brunswick | | | | | | | | |
|------------------------|----------|----------|----------|---------------|---------------------|----------|----------|---------------|
| | Actual | | | | Seasonally Adjusted | | | Annual Change |
| | May 2006 | Apr 2007 | May 2007 | Annual Change | May 2006 | Apr 2007 | May 2007 | |
| Population ('000) | 611.3 | 612.5 | 612.5 | 1.2 | 611.3 | 612.5 | 612.5 | 1.2 |
| Labour Force ('000) | 400.9 | 383.6 | 400.2 | (0.7) | 392.6 | 391.2 | 391.6 | (1.0) |
| Employment ('000) | 365.0 | 349.9 | 367.3 | 2.3 | 358.8 | 362.5 | 361.0 | 2.2 |
| Unemployed ('000) | 35.9 | 33.7 | 32.9 | (3.0) | 33.8 | 28.7 | 30.7 | (3.1) |
| Unemployment Rate (%) | 9.0 | 8.8 | 8.2 | (0.8) | 8.6 | 7.3 | 7.8 | (0.8) |
| Participation Rate (%) | 65.6 | 62.6 | 65.3 | (0.3) | 64.2 | 63.9 | 63.9 | (0.3) |
| Employment Rate (%) | 59.7 | 57.1 | 60.0 | 0.3 | 58.7 | 59.2 | 58.9 | 0.2 |

| Quebec | | | | | | | | |
|------------------------|----------|----------|----------|---------------|---------------------|----------|----------|---------------|
| | Actual | | | | Seasonally Adjusted | | | Annual Change |
| | May 2006 | Apr 2007 | May 2007 | Annual Change | May 2006 | Apr 2007 | May 2007 | |
| Population ('000) | 6,242.1 | 6,303.5 | 6,308.2 | 66.1 | 6,242.1 | 6,303.5 | 6,308.2 | 66.1 |
| Labour Force ('000) | 4,103.0 | 4,097.5 | 4,147.8 | 44.8 | 4,084.9 | 4,138.5 | 4,134.2 | 49.3 |
| Employment ('000) | 3,789.4 | 3,785.4 | 3,862.0 | 72.6 | 3,763.5 | 3,839.1 | 3,836.9 | 73.4 |
| Unemployed ('000) | 313.6 | 312.1 | 285.8 | (27.8) | 321.3 | 299.4 | 297.3 | (24.0) |
| Unemployment Rate (%) | 7.6 | 7.6 | 6.9 | (0.7) | 7.9 | 7.2 | 7.2 | (0.7) |
| Participation Rate (%) | 65.7 | 65.0 | 65.8 | 0.1 | 65.4 | 65.7 | 65.5 | 0.1 |
| Employment Rate (%) | 60.7 | 60.1 | 61.2 | 0.5 | 60.3 | 60.9 | 60.8 | 0.5 |

| Ontario | | | | | | | | |
|------------------------|----------|----------|----------|---------------|---------------------|----------|----------|---------------|
| | Actual | | | | Seasonally Adjusted | | | Annual Change |
| | May 2006 | Apr 2007 | May 2007 | Annual Change | May 2006 | Apr 2007 | May 2007 | |
| Population ('000) | 10,211.2 | 10,331.7 | 10,342.1 | 130.9 | 10,211.2 | 10,331.7 | 10,342.1 | 130.9 |
| Labour Force ('000) | 7,011.9 | 6,945.0 | 7,094.8 | 82.9 | 6,929.8 | 7,022.5 | 7,011.9 | 82.1 |
| Employment ('000) | 6,582.9 | 6,489.2 | 6,634.0 | 51.1 | 6,517.4 | 6,555.7 | 6,567.6 | 50.2 |
| Unemployed ('000) | 429.0 | 455.8 | 460.8 | 31.8 | 412.4 | 466.7 | 444.3 | 31.9 |
| Unemployment Rate (%) | 6.1 | 6.6 | 6.5 | 0.4 | 6.0 | 6.6 | 6.3 | 0.3 |
| Participation Rate (%) | 68.7 | 67.2 | 68.6 | (0.1) | 67.9 | 68.0 | 67.8 | (0.1) |
| Employment Rate (%) | 64.5 | 62.8 | 64.1 | (0.4) | 63.8 | 63.5 | 63.5 | (0.3) |

| Manitoba | | | | | | | | |
|------------------------|----------|----------|----------|---------------|---------------------|----------|----------|---------------|
| | Actual | | | | Seasonally Adjusted | | | Annual Change |
| | May 2006 | Apr 2007 | May 2007 | Annual Change | May 2006 | Apr 2007 | May 2007 | |
| Population ('000) | 891.5 | 896.8 | 897.6 | 6.1 | 891.5 | 896.8 | 897.6 | 6.1 |
| Labour Force ('000) | 619.0 | 618.9 | 634.7 | 15.7 | 613.5 | 622.2 | 627.9 | 14.4 |
| Employment ('000) | 596.5 | 587.0 | 604.5 | 8.0 | 588.1 | 592.7 | 595.4 | 7.3 |
| Unemployed ('000) | 22.5 | 31.9 | 30.2 | 7.7 | 25.4 | 29.6 | 32.5 | 7.1 |
| Unemployment Rate (%) | 3.6 | 5.2 | 4.8 | 1.2 | 4.1 | 4.8 | 5.2 | 1.1 |
| Participation Rate (%) | 69.4 | 69.0 | 70.7 | 1.3 | 68.8 | 69.4 | 70.0 | 1.2 |
| Employment Rate (%) | 66.9 | 65.5 | 67.3 | 0.4 | 66.0 | 66.1 | 66.3 | 0.3 |

Population is for those 15 years of age and over.

Annual Change is in thousands or percentage points as shown in row headings.

Table 1. Basic Characteristics, Canada/Provinces

| Saskatchewan | | | | | | | | |
|------------------------|----------|----------|----------|---------------|---------------------|----------|----------|---------------|
| | Actual | | | | Seasonally Adjusted | | | Annual Change |
| | May 2006 | Apr 2007 | May 2007 | Annual Change | May 2006 | Apr 2007 | May 2007 | |
| Population ('000) | 745.9 | 748.6 | 749.2 | 3.3 | 745.9 | 748.6 | 749.2 | 3.3 |
| Labour Force ('000) | 518.8 | 516.6 | 531.8 | 13.0 | 511.9 | 523.3 | 524.7 | 12.8 |
| Employment ('000) | 496.1 | 494.4 | 509.0 | 12.9 | 487.1 | 502.6 | 501.1 | 14.0 |
| Unemployed ('000) | 22.8 | 22.2 | 22.8 | - | 24.8 | 20.6 | 23.6 | (1.2) |
| Unemployment Rate (%) | 4.4 | 4.3 | 4.3 | (0.1) | 4.8 | 3.9 | 4.5 | (0.3) |
| Participation Rate (%) | 69.6 | 69.0 | 71.0 | 1.4 | 68.6 | 69.9 | 70.0 | 1.4 |
| Employment Rate (%) | 66.5 | 66.0 | 67.9 | 1.4 | 65.3 | 67.1 | 66.9 | 1.6 |

| Alberta | | | | | | | | |
|------------------------|----------|----------|----------|---------------|---------------------|----------|----------|---------------|
| | Actual | | | | Seasonally Adjusted | | | Annual Change |
| | May 2006 | Apr 2007 | May 2007 | Annual Change | May 2006 | Apr 2007 | May 2007 | |
| Population ('000) | 2,628.0 | 2,724.5 | 2,732.4 | 104.4 | 2,628.0 | 2,724.5 | 2,732.4 | 104.4 |
| Labour Force ('000) | 1,966.3 | 1,997.7 | 2,042.0 | 75.7 | 1,943.6 | 2,018.6 | 2,020.4 | 76.8 |
| Employment ('000) | 1,899.2 | 1,927.9 | 1,964.0 | 64.8 | 1,876.6 | 1,950.7 | 1,943.1 | 66.5 |
| Unemployed ('000) | 67.1 | 69.8 | 78.0 | 10.9 | 67.0 | 67.9 | 77.2 | 10.2 |
| Unemployment Rate (%) | 3.4 | 3.5 | 3.8 | 0.4 | 3.4 | 3.4 | 3.8 | 0.4 |
| Participation Rate (%) | 74.8 | 73.3 | 74.7 | (0.1) | 74.0 | 74.1 | 73.9 | (0.1) |
| Employment Rate (%) | 72.3 | 70.8 | 71.9 | (0.4) | 71.4 | 71.6 | 71.1 | (0.3) |

| British Columbia | | | | | | | | |
|-------------------------|----------|----------|----------|---------------|---------------------|----------|----------|---------------|
| | Actual | | | | Seasonally Adjusted | | | Annual Change |
| | May 2006 | Apr 2007 | May 2007 | Annual Change | May 2006 | Apr 2007 | May 2007 | |
| Population ('000) | 3,503.5 | 3,557.1 | 3,561.8 | 58.3 | 3,503.5 | 3,557.1 | 3,561.8 | 58.3 |
| Labour Force ('000) | 2,315.6 | 2,333.3 | 2,378.7 | 63.1 | 2,301.1 | 2,353.8 | 2,362.4 | 61.3 |
| Employment ('000) | 2,202.6 | 2,225.9 | 2,274.6 | 72.0 | 2,192.1 | 2,249.1 | 2,263.3 | 71.2 |
| Unemployed ('000) | 113.1 | 107.4 | 104.1 | (9.0) | 109.1 | 104.7 | 99.1 | (10.0) |
| Unemployment Rate (%) | 4.9 | 4.6 | 4.4 | (0.5) | 4.7 | 4.4 | 4.2 | (0.5) |
| Participation Rate (%) | 66.1 | 65.6 | 66.8 | 0.7 | 65.7 | 66.2 | 66.3 | 0.6 |
| Employment Rate (%) | 62.9 | 62.6 | 63.9 | 1.0 | 62.6 | 63.2 | 63.5 | 0.9 |

Population is for those 15 years of age and over.

Annual Change is in thousands or percentage points as shown in row headings.

Table 2. NS Economic Regions/Halifax CMA

(unadjusted - three month moving average)

| | Canada | | | | Nova Scotia | | | |
|------------------------|----------|----------|----------|---------------|-------------|----------|----------|---------------|
| | May 2006 | Apr 2007 | May 2007 | Annual Change | May 2006 | Apr 2007 | May 2007 | Annual Change |
| Population ('000) | 26,102.3 | 26,444.1 | 26,474.0 | 371.7 | 762.5 | 763.6 | 763.7 | 1.2 |
| Labour Force ('000) | 17,457.4 | 17,645.7 | 17,807.7 | 350.3 | 480.2 | 478.7 | 485.5 | 5.3 |
| Employment ('000) | 16,326.2 | 16,509.2 | 16,684.0 | 357.8 | 439.0 | 436.5 | 443.5 | 4.5 |
| Unemployed ('000) | 1,131.2 | 1,136.5 | 1,123.6 | (7.6) | 41.2 | 42.2 | 42.0 | 0.8 |
| Unemployment Rate (%) | 6.5 | 6.4 | 6.3 | (0.2) | 8.6 | 8.8 | 8.7 | 0.1 |
| Participation Rate (%) | 66.9 | 66.7 | 67.3 | 0.4 | 63.0 | 62.7 | 63.6 | 0.6 |
| Employment Rate (%) | 62.5 | 62.4 | 63.0 | 0.5 | 57.6 | 57.2 | 58.1 | 0.5 |

| | 1230 - Annapolis Valley | | | | 1210 - Cape Breton | | | |
|------------------------|-------------------------|----------|----------|---------------|--------------------|----------|----------|---------------|
| | May 2006 | Apr 2007 | May 2007 | Annual Change | May 2006 | Apr 2007 | May 2007 | Annual Change |
| Population ('000) | 99.6 | 100.0 | 100.0 | 0.4 | 117.1 | 116.5 | 116.4 | (0.7) |
| Labour Force ('000) | 60.0 | 63.1 | 64.1 | 4.1 | 62.8 | 62.4 | 62.0 | (0.8) |
| Employment ('000) | 54.9 | 58.1 | 59.1 | 4.2 | 54.1 | 52.5 | 52.7 | (1.4) |
| Unemployed ('000) | 5.1 | 4.9 | 5.0 | (0.1) | 8.8 | 10.0 | 9.3 | 0.5 |
| Unemployment Rate (%) | 8.5 | 7.8 | 7.8 | (0.7) | 14.0 | 16.0 | 15.0 | 1.0 |
| Participation Rate (%) | 60.2 | 63.1 | 64.1 | 3.9 | 53.6 | 53.6 | 53.3 | (0.3) |
| Employment Rate (%) | 55.1 | 58.1 | 59.1 | 4.0 | 46.2 | 45.1 | 45.3 | (0.9) |

| | 250 - Halifax County | | | | Halifax Metro (CMA) | | | |
|------------------------|----------------------|----------|----------|---------------|---------------------|----------|----------|---------------|
| | May 2006 | Apr 2007 | May 2007 | Annual Change | May 2006 | Apr 2007 | May 2007 | Annual Change |
| Population ('000) | 310.9 | 312.6 | 312.8 | 1.9 | 310.9 | 312.6 | 312.8 | 1.9 |
| Labour Force ('000) | 215.5 | 216.1 | 219.1 | 3.6 | 215.5 | 216.1 | 219.1 | 3.6 |
| Employment ('000) | 203.5 | 204.9 | 206.3 | 2.8 | 203.5 | 204.9 | 206.3 | 2.8 |
| Unemployed ('000) | 12.0 | 11.2 | 12.8 | 0.8 | 12.0 | 11.2 | 12.8 | 0.8 |
| Unemployment Rate (%) | 5.6 | 5.2 | 5.8 | 0.2 | 5.6 | 5.2 | 5.8 | 0.2 |
| Participation Rate (%) | 69.3 | 69.1 | 70.0 | 0.7 | 69.3 | 69.1 | 70.0 | 0.7 |
| Employment Rate (%) | 65.5 | 65.5 | 66.0 | 0.5 | 65.5 | 65.5 | 66.0 | 0.5 |

| | 1220 - North Shore | | | | 1240 - Southern | | | |
|------------------------|--------------------|----------|----------|---------------|-----------------|----------|----------|---------------|
| | May 2006 | Apr 2007 | May 2007 | Annual Change | May 2006 | Apr 2007 | May 2007 | Annual Change |
| Population ('000) | 131.2 | 130.9 | 130.9 | (0.3) | 103.8 | 103.6 | 103.5 | (0.3) |
| Labour Force ('000) | 80.6 | 76.5 | 77.9 | (2.7) | 61.2 | 60.6 | 62.4 | 1.2 |
| Employment ('000) | 72.2 | 67.3 | 69.3 | (2.9) | 54.3 | 53.7 | 56.1 | 1.8 |
| Unemployed ('000) | 8.5 | 9.2 | 8.6 | 0.1 | 6.8 | 6.9 | 6.4 | (0.4) |
| Unemployment Rate (%) | 10.5 | 12.0 | 11.0 | 0.5 | 11.1 | 11.4 | 10.3 | (0.8) |
| Participation Rate (%) | 61.4 | 58.4 | 59.5 | (1.9) | 59.0 | 58.5 | 60.3 | 1.3 |
| Employment Rate (%) | 55.0 | 51.4 | 52.9 | (2.1) | 52.3 | 51.8 | 54.2 | 1.9 |

Table 3. Job Tenure, Canada/Provinces

| | Employment - Seasonally Adjusted (000's) | | | | | | | | | | | |
|----------------------------------|--|----------|----------|--------|-----------|----------|----------|--------|-----------|----------|----------|--------|
| | Total | | | | Full-Time | | | | Part-time | | | |
| | | | | Annual | | | | Annual | | | | Annual |
| | May 2006 | Apr 2007 | May 2007 | Change | May 2006 | Apr 2007 | May 2007 | Change | May 2006 | Apr 2007 | May 2007 | Change |
| Canada | 16,512.6 | 16,793.2 | 16,802.5 | 289.9 | 13,573.4 | 13,709.2 | 13,741.9 | 168.5 | 2,939.2 | 3,084.0 | 3,060.6 | 121.4 |
| Newfoundland and Labrador | 216.3 | 219.6 | 218.5 | 2.2 | 184.1 | 188.9 | 185.3 | 1.2 | 32.2 | 30.7 | 33.2 | 1.0 |
| Prince Edward Island | 69.6 | 70.4 | 69.0 | -0.6 | 59.2 | 58.4 | 57.7 | -1.5 | 10.5 | 12.0 | 11.3 | 0.8 |
| Nova Scotia | 443.1 | 450.9 | 446.5 | 3.4 | 358.6 | 367.5 | 366.0 | 7.4 | 84.5 | 83.4 | 80.5 | -4.0 |
| New Brunswick | 358.8 | 362.5 | 361.0 | 2.2 | 301.7 | 305.2 | 302.1 | 0.4 | 57.1 | 57.4 | 58.9 | 1.8 |
| Quebec | 3,763.5 | 3,839.1 | 3,836.9 | 73.4 | 3,073.3 | 3,127.8 | 3,139.2 | 65.9 | 690.3 | 711.2 | 697.7 | 7.4 |
| Ontario | 6,517.4 | 6,555.7 | 6,567.6 | 50.2 | 5,396.8 | 5,353.7 | 5,371.0 | -25.8 | 1,120.6 | 1,202.0 | 1,196.6 | 76.0 |
| Manitoba | 588.1 | 592.7 | 595.4 | 7.3 | 476.2 | 472.7 | 475.9 | -0.3 | 111.9 | 120.0 | 119.5 | 7.6 |
| Saskatchewan | 487.1 | 502.6 | 501.1 | 14.0 | 397.9 | 402.2 | 401.6 | 3.7 | 89.2 | 100.4 | 99.5 | 10.3 |
| Alberta | 1,876.6 | 1,950.7 | 1,943.1 | 66.5 | 1,574.3 | 1,637.8 | 1,629.1 | 54.8 | 302.3 | 312.8 | 314.0 | 11.7 |
| British Columbia | 2,192.1 | 2,249.1 | 2,263.3 | 71.2 | 1,751.1 | 1,794.8 | 1,814.3 | 63.2 | 440.9 | 454.2 | 449.0 | 8.1 |

| | Employment - Actual (000's) | | | | | | | | | | | |
|----------------------------------|-----------------------------|----------|----------|--------|-----------|----------|----------|--------|-----------|----------|----------|--------|
| | Total | | | | Full-Time | | | | Part-time | | | |
| | | | | Annual | | | | Annual | | | | Annual |
| | May 2006 | Apr 2007 | May 2007 | Change | May 2006 | Apr 2007 | May 2007 | Change | May 2006 | Apr 2007 | May 2007 | Change |
| Canada | 16,676.0 | 16,575.7 | 16,963.9 | 287.9 | 13,751.3 | 13,410.1 | 13,916.2 | 164.9 | 2,924.7 | 3,165.6 | 3,047.8 | 123.1 |
| Newfoundland and Labrador | 220.0 | 207.7 | 222.2 | 2.2 | 186.9 | 176.5 | 188.3 | 1.4 | 33.1 | 31.3 | 33.9 | 0.8 |
| Prince Edward Island | 72.7 | 65.8 | 71.8 | -0.9 | 62.1 | 53.2 | 60.6 | -1.5 | 10.6 | 12.6 | 11.2 | 0.6 |
| Nova Scotia | 451.8 | 442.5 | 454.6 | 2.8 | 368.1 | 356.5 | 374.7 | 6.6 | 83.7 | 86.0 | 79.9 | -3.8 |
| New Brunswick | 365.0 | 349.9 | 367.3 | 2.3 | 306.3 | 289.6 | 306.2 | -0.1 | 58.6 | 60.3 | 61.1 | 2.5 |
| Quebec | 3,789.4 | 3,785.4 | 3,862.0 | 72.6 | 3,100.2 | 3,047.6 | 3,167.1 | 66.9 | 689.2 | 737.8 | 694.9 | 5.7 |
| Ontario | 6,582.9 | 6,489.2 | 6,634.0 | 51.1 | 5,469.7 | 5,265.5 | 5,445.0 | -24.7 | 1,113.2 | 1,223.7 | 1,189.0 | 75.8 |
| Manitoba | 596.5 | 587.0 | 604.5 | 8.0 | 483.5 | 463.0 | 482.8 | -0.7 | 113.0 | 124.0 | 121.6 | 8.6 |
| Saskatchewan | 496.1 | 494.4 | 509.0 | 12.9 | 409.3 | 393.1 | 412.3 | 3.0 | 86.8 | 101.4 | 96.7 | 9.9 |
| Alberta | 1,899.2 | 1,927.9 | 1,964.0 | 64.8 | 1,600.3 | 1,600.5 | 1,651.0 | 50.7 | 298.9 | 327.4 | 313.0 | 14.1 |
| British Columbia | 2,202.6 | 2,225.9 | 2,274.6 | 72.0 | 1,765.0 | 1,764.7 | 1,828.0 | 63.0 | 437.6 | 461.2 | 446.5 | 8.9 |

Table 3 Job Tenure, Canada/Provinces

Youth Statistics

15-24 Age Group - Seasonally Adjusted

| | Labour Force - 000's | | | | Employment - 000's | | | | Unemployment - % | | | |
|---------------------------|----------------------|----------|----------|---------------|--------------------|----------|----------|---------------|------------------|----------|----------|---------------|
| | May 2006 | Apr 2007 | May 2007 | Annual Change | May 2006 | Apr 2007 | May 2007 | Annual Change | May 2006 | Apr 2007 | May 2007 | Annual Change |
| Canada | 2,870.1 | 2,914.5 | 2,920.7 | 50.6 | 2,549.8 | 2,579.3 | 2,586.4 | 36.6 | 11.2 | 11.5 | 11.4 | 0.2 |
| Newfoundland and Labrador | 36.0 | 34.8 | 34.4 | (1.6) | 28.5 | 27.4 | 28.0 | (0.5) | 21.1 | 21.3 | 18.6 | (2.5) |
| Prince Edward Island | 14.5 | 14.5 | 13.5 | (1.0) | 12.5 | 12.6 | 11.8 | (0.7) | 13.8 | 12.4 | 12.6 | (1.2) |
| Nova Scotia | 84.0 | 83.1 | 81.1 | (2.9) | 71.9 | 71.8 | 69.4 | (2.5) | 14.4 | 13.6 | 14.4 | - |
| New Brunswick | 65.0 | 61.5 | 63.2 | (1.8) | 56.1 | 55.0 | 54.8 | (1.3) | 13.7 | 10.6 | 13.3 | (0.4) |
| Quebec | 620.2 | 639.5 | 635.2 | 15.0 | 535.8 | 560.0 | 551.0 | 15.2 | 13.6 | 12.4 | 13.3 | (0.3) |
| Ontario | 1,105.3 | 1,122.3 | 1,126.5 | 21.2 | 973.4 | 971.5 | 981.8 | 8.4 | 11.9 | 13.4 | 12.9 | 1.0 |
| Manitoba | 113.3 | 115.4 | 117.0 | 3.7 | 103.3 | 104.1 | 103.9 | 0.6 | 8.8 | 9.8 | 11.2 | 2.4 |
| Saskatchewan | 95.8 | 100.2 | 100.2 | 4.4 | 88.1 | 92.6 | 92.3 | 4.2 | 8.0 | 7.6 | 7.9 | (0.1) |
| Alberta | 355.1 | 363.2 | 360.4 | 5.3 | 330.9 | 333.0 | 331.0 | 0.1 | 6.8 | 8.3 | 8.2 | 1.4 |
| British Columbia | 380.9 | 380.1 | 389.1 | 8.2 | 349.4 | 351.3 | 362.5 | 13.1 | 8.3 | 7.6 | 6.8 | (1.5) |

15-24 Age Group - Actual

| | Labour Force - 000's | | | | Employment - 000's | | | | Unemployment - % | | | |
|---------------------------|----------------------|----------|----------|---------------|--------------------|----------|----------|---------------|------------------|----------|----------|---------------|
| | May 2006 | Apr 2007 | May 2007 | Annual Change | May 2006 | Apr 2007 | May 2007 | Annual Change | May 2006 | Apr 2007 | May 2007 | Annual Change |
| Canada | 2,978.5 | 2,739.2 | 3,030.7 | 52.2 | 2,611.0 | 2,413.1 | 2,645.0 | 34.0 | 12.3 | 11.9 | 12.7 | 0.4 |
| Newfoundland and Labrador | 37.7 | 31.0 | 35.7 | -2.0 | 28.0 | 23.3 | 27.8 | -0.2 | 25.7 | 24.5 | 21.8 | -3.9 |
| Prince Edward Island | 15.4 | 12.4 | 14.4 | -1.0 | 13.1 | 10.6 | 12.3 | -0.8 | 14.9 | 14.5 | 14.6 | -0.3 |
| Nova Scotia | 87.6 | 77.6 | 84.7 | -2.9 | 73.3 | 66.3 | 70.3 | -3.0 | 16.4 | 14.7 | 17.0 | 0.6 |
| New Brunswick | 69.2 | 57.0 | 67.4 | -1.8 | 58.2 | 50.3 | 56.7 | -1.5 | 15.9 | 11.8 | 15.9 | 0.0 |
| Quebec | 621.1 | 598.3 | 634.1 | 13.0 | 536.0 | 521.2 | 548.3 | 12.3 | 13.7 | 12.9 | 13.5 | -0.2 |
| Ontario | 1,166.0 | 1,047.1 | 1,192.5 | 26.5 | 1,004.5 | 907.0 | 1,015.6 | 11.1 | 13.9 | 13.4 | 14.8 | 0.9 |
| Manitoba | 117.7 | 112.0 | 122.3 | 4.6 | 107.9 | 100.1 | 109.3 | 1.4 | 8.3 | 10.6 | 10.6 | 2.3 |
| Saskatchewan | 100.8 | 94.5 | 104.6 | 3.8 | 92.4 | 86.7 | 95.9 | 3.5 | 8.3 | 8.3 | 8.3 | 0.0 |
| Alberta | 371.8 | 346.2 | 376.0 | 4.2 | 343.5 | 313.1 | 341.4 | -2.1 | 7.6 | 9.5 | 9.2 | 1.6 |
| British Columbia | 391.4 | 363.2 | 399.2 | 7.8 | 354.3 | 334.5 | 367.5 | 13.2 | 9.5 | 7.9 | 7.9 | -1.6 |

Table 5. CMAs, Canada

| | CMA Data | | | | | | | | | | | |
|---------------------------------|-----------------------|----------|----------|---------------|---------------------|----------|----------|---------------|------------------------|----------|----------|---------------|
| | Unemployment Rate - % | | | | Employment Rate - % | | | | Participation Rate - % | | | |
| | May 2006 | Apr 2007 | May 2007 | Annual Change | May 2006 | Apr 2007 | May 2007 | Annual Change | May 2006 | Apr 2007 | May 2007 | Annual Change |
| Halifax | 5.6 | 5.2 | 5.8 | 0.2 | 65.5 | 65.5 | 66.0 | 0.5 | 69.3 | 69.1 | 70.0 | 0.7 |
| Saint John, New Brunswick | 6.6 | 4.2 | 5.1 | (1.5) | 60.5 | 61.3 | 62.3 | 1.8 | 64.7 | 64.0 | 65.7 | 1.0 |
| Saguenay | 9.2 | 10.5 | 9.7 | 0.5 | 56.9 | 54.8 | 56.2 | (0.7) | 62.7 | 61.3 | 62.2 | (0.5) |
| Québec | 4.6 | 5.4 | 5.1 | 0.5 | 64.3 | 61.7 | 62.7 | (1.6) | 67.4 | 65.2 | 66.1 | (1.3) |
| Trois-Rivières | 8.6 | 8.8 | 8.2 | (0.4) | 57.1 | 57.8 | 58.6 | 1.5 | 62.5 | 63.4 | 63.9 | 1.4 |
| Sherbrooke | 7.8 | 7.3 | 6.4 | (1.4) | 60.9 | 60.0 | 60.8 | (0.1) | 65.9 | 64.7 | 65.0 | (0.9) |
| Montreal | 8.9 | 7.1 | 6.7 | (2.2) | 60.7 | 61.5 | 62.0 | 1.3 | 66.6 | 66.2 | 66.4 | (0.2) |
| Ottawa-Gatineau | 5.1 | 5.2 | 5.5 | 0.4 | 69.0 | 67.3 | 67.6 | (1.4) | 72.6 | 70.9 | 71.6 | (1.0) |
| Greater Sudbury / Grand Sudbury | 7.3 | 5.4 | 5.8 | (1.5) | 58.2 | 60.3 | 61.3 | 3.1 | 62.8 | 63.8 | 65.0 | 2.2 |
| Oshawa | 6.1 | 6.3 | 5.8 | (0.3) | 65.0 | 63.7 | 65.2 | 0.2 | 69.2 | 68.0 | 69.2 | - |
| Toronto | 6.4 | 6.8 | 7.0 | 0.6 | 64.0 | 63.9 | 64.1 | 0.1 | 68.4 | 68.5 | 69.0 | 0.6 |
| Hamilton | 5.9 | 6.4 | 6.4 | 0.5 | 63.3 | 61.8 | 62.8 | (0.5) | 67.2 | 66.0 | 67.1 | (0.1) |
| St. Catharines - Niagara | 6.8 | 7.2 | 6.3 | (0.5) | 57.3 | 57.3 | 58.8 | 1.5 | 61.5 | 61.7 | 62.7 | 1.2 |
| London | 5.8 | 5.7 | 6.1 | 0.3 | 65.4 | 64.0 | 63.8 | (1.6) | 69.4 | 67.8 | 68.0 | (1.4) |
| Windsor | 8.7 | 9.4 | 9.2 | 0.5 | 58.8 | 56.6 | 56.9 | (1.9) | 64.4 | 62.4 | 62.7 | (1.7) |
| Kitchener | 5.1 | 5.9 | 5.8 | 0.7 | 67.1 | 65.8 | 65.5 | (1.6) | 70.7 | 69.9 | 69.5 | (1.2) |
| Thunder Bay | 8.8 | 7.3 | 7.5 | (1.3) | 58.9 | 59.2 | 59.9 | 1.0 | 64.6 | 64.0 | 64.9 | 0.3 |
| Winnipeg | 4.7 | 5.0 | 5.0 | 0.3 | 66.4 | 66.8 | 67.7 | 1.3 | 69.8 | 70.3 | 71.2 | 1.4 |
| Regina | 5.3 | 4.2 | 4.7 | (0.6) | 66.1 | 68.1 | 68.1 | 2.0 | 69.8 | 71.1 | 71.5 | 1.7 |
| Saskatoon | 5.0 | 4.1 | 4.2 | (0.8) | 66.7 | 69.6 | 70.1 | 3.4 | 70.2 | 72.6 | 73.1 | 2.9 |
| Calgary | 3.1 | 3.3 | 3.4 | 0.3 | 73.7 | 73.0 | 73.6 | (0.1) | 76.1 | 75.5 | 76.1 | - |
| Edmonton | 3.8 | 3.3 | 3.6 | (0.2) | 66.1 | 68.0 | 68.2 | 2.1 | 68.7 | 70.3 | 70.8 | 2.1 |
| Vancouver | 4.2 | 3.7 | 4.0 | (0.2) | 63.6 | 64.2 | 64.2 | 0.6 | 66.3 | 66.7 | 66.9 | 0.6 |
| Victoria | 4.1 | 3.1 | 3.2 | (0.9) | 63.0 | 62.5 | 63.8 | 0.8 | 65.7 | 64.6 | 65.9 | 0.2 |

Appendix II - Glossary

Labour Force Survey (LFS)

The following are key definitions used in the LFS. For a more detailed dictionary of concepts and definitions refer to Statistics Canada, *Guide to the Labour Force Survey*, Catalogue No. 71-543-GIE. Statistics Canada outlines other labour force information products and services in *Labour Force Survey Products and Services*, Catalogue No. 71-544-XIE.

Population: The target population covered by the survey corresponds to all persons aged 15 years and over residing in the provinces of Canada, with the exception of the following: 1) persons living on Indian Reserves, 2) full-time members of the regular Armed Forces, and 3) persons living in institutions.

Labour Force: The civilian non-institutional population 15 years of age and over that, during the survey reference week, was employed or unemployed and actively looking for work. Prior to 1966, persons aged 14 and over were covered by the survey.

Employment: Employed persons are those persons who, during the reference week, did any work for pay or profit, or had a job and were absent from work.

Full-time Employment: Refers to those persons who usually work 30 hours or more per week at their main or only job.

Part-time Employment: Refers to those persons who usually work less than 30 hours per week at their main or only job.

Unemployment: Unemployed persons are those persons who, during the reference week, were available for work and were either on temporary layoff, had looked for work in the past four weeks, or had a job to start within the next four weeks.

Not in the Labour Force: Persons not in the labour force are those who, during the reference week, were unwilling or unable to offer or supply

labour services under conditions existing in their labour markets, that is, they were neither employed nor unemployed.

Unemployment Rate: Unemployment rate is the number of unemployed persons expressed as a percentage of the labour force. The unemployment rate for a particular group (age, sex, marital status, etc.) is the number unemployed in that group expressed as a percentage of the labour force for that group.

Participation Rate: The total labour force expressed as a percentage of the population aged 15 years and over. The participation rate for a particular group (for example, women aged 25 years and over) is the labour force in that group expressed as a percentage of the population for that group.

Employment Rate: The number of employed persons expressed as a percentage of the population 15 years of age and over. The employment rate for a particular group (age, sex, marital status, province, etc.) is the number employed in that group expressed as a percentage of the population for that group.

Seasonal Adjustment (s.a.): Fluctuations in economic time series are caused by seasonal, cyclical and irregular movements. A seasonally adjusted series is one from which seasonal movements have been eliminated. Seasonal movements are defined as those which are caused by regular annual events such as climate, holidays, vacation periods and cycles related to crops, production and retail sales associated with Christmas and Easter. It should be noted that the seasonally adjusted series contain irregular as well as long-term cyclical fluctuations. The seasonal adjustment program is a complicated computer program which differentiates between these seasonal, cyclical and irregular movements in a series over a number of years and, on the basis of past movements, estimates appropriate seasonal

factors for current data. On an annual basis, the historic series of seasonally adjusted data are revised in light of the most recent information on changes in seasonality.

Wages and Salaries

Wages and Salaries: Wages and salaries is an aggregate of many types of payments made to employees—regular remuneration, directors’ fees, bonuses, commissions, gratuities, income in kind, taxable allowances, retroactive wage payments and stock options. Wages and salaries are estimated on a “gross” basis that is, prior to deductions for employees’ contributions to income tax, employment insurance, pension funds, etc. Supplementary labour income, which is defined as payments made by employers for the future benefit of their employees, comprises employer contributions to employee welfare, pensions, workers compensation and employment insurance. Wages and salaries, as well as, supplementary labour income are the components of Labour Income (all compensation paid to employees).

Wages and salaries estimates are derived to supply the System of National Accounts (SNA) with the Labour Income component of the Gross Domestic Product (GDP). Monthly estimates of wages and salaries are published, on a quarterly basis, for 16 industry groups. Industrial coverage is based on the North American Standard Industrial Classification System (NAICS).

For a more detailed dictionary of concepts and definitions from Statistics Canada, *Estimates of Labour Income*, Catalogue No. 13F0022-XIE or refer to:

<http://www.statcan.ca/cgi-bin/imdb/p2SV.pl?Function=getSurvey&SDDS=2602&lang=en&db=IMDB&dbg=f&adm=8&dis=2>

Average Weekly Earnings

Average Weekly Employment: For purposes of developing average weekly employment and average weekly earnings data, the target

population of the Statistics Canada Survey of Employment, Payrolls and Hours (SEPH), is composed of all employers in Canada, except, 1) those owners or partners of unincorporated business and professional practices, the self-employed, unpaid family workers, persons working outside Canada, casual workers for whom a T-4 is not required; 2) agriculture, fishing and trapping, private household services, religious organizations; and 3) the military. It draws its sample from the Business Register (BR) maintained by the Business Register Division of Statistics Canada and from a list of all businesses registered in Canada Customs and Revenue Agency’s Business Number program with one or more active payroll deduction accounts.

Average Weekly Earnings: The Survey of Employment, Earnings and Hours is produced from the combination of the Business Payroll Survey results and the payroll deductions administrative data received Canada Customs and Revenue Agency.

SEPH is Canada’s only source of detailed information on the total number of paid employees, payrolls, and hours at detailed industrial, provincial and territorial levels.

For further information about the *Survey of Employment, Payrolls and Hours* (SEPH), No. 2612, refer to Statistics Canada, *Employment, Earnings and Hours*, monthly, Catalogue No. 71-002-XIB or annual, Catalogue No. 72F0023-XCB; *CANSIM Tables 281-0023, 281-0024, 281-0026 and 281-0027.*

Employment Insurance (EI)

Employment Insurance Statistics: The *Employment Insurance Statistics Monthly* reports official statistics on the operation of the *Employment Insurance Statistics Program* and provides complementary labour market statistics. Statistics are produced from an administrative data source and may, from time to time, be affected by changes in the *Employment Insurance Act* or administrative procedures.

Number of Beneficiaries: The number of beneficiaries represents a count of persons who received Employment Insurance (EI) benefits during the *Labour Force Survey* reference week (usually containing the 15th day of the month).

Regular Benefit Payments: The regular benefit payments series measures the total of all monies received by individuals for the entire month, e.g., regular, training, job creation, sickness, self-employment, maternity, adoption, parental, retirement, fishing, work sharing and compassionate benefits.

For further information related to the EI data see Statistics Canada, *CANSIM Tables 276-0001 and 275-0006, 276-0011, 276-0015 and 276-0006*.

Public Sector

Public Sector: The population of public sector employment consists of all institutional units controlled and mainly financed by governments (federal, provincial, territorial and local) in Canada, including their business enterprises. Thus, the term “government” presented in the Statistics Canada’s Public Sector Employment Survey includes all organizations controlled by any of the three levels of government that are not-for-profit and perform non-commercial services. The Canadian military (regular forces and reservists) and uniformed RCMP members are included in the federal government. Organizations controlled by government that operate as commercial corporations (such as Canada Post or Hydro-Quebec) are considered government business enterprises. The two combine to give the total public sector.

Employment: Employment is a measure of the number of individuals who work within a given industry. In other words, employment refers to the number of persons drawing pay for services rendered or for paid absences, regardless whether employed on a full time, part-time or on a temporary basis.

Wages and Salaries: Wages and salaries include directors’ fees, bonuses, commissions, gratuities, income in kind, taxable allowances,

and retroactive wage payments. Wages and salaries are estimated on a gross basis, that is, before deductions for employees’ contributions to income tax, unemployment insurance, or pension plans. Wages and salaries accumulating over time, for example, retroactive payments, are accounted for in the month and year in which they are paid. Supplementary labour income, such as employer contributions to pension, medical or similar plans are not included.

Further information on public sector employment can be downloaded from Statistics Canada, *Canadian Statistics* module; *CANSIM Tables 183-0002 and 183-0004*. As well, more detailed information, definitions, data sources and methods for Survey No. 1713 are available at:

<http://www.statcan.ca/cgi-bin/imdb/p2SV.pl?Function=getSurvey&SDDS=1713&lang=en&db=IMDB&dbg=f&adm=8&dis=2>

