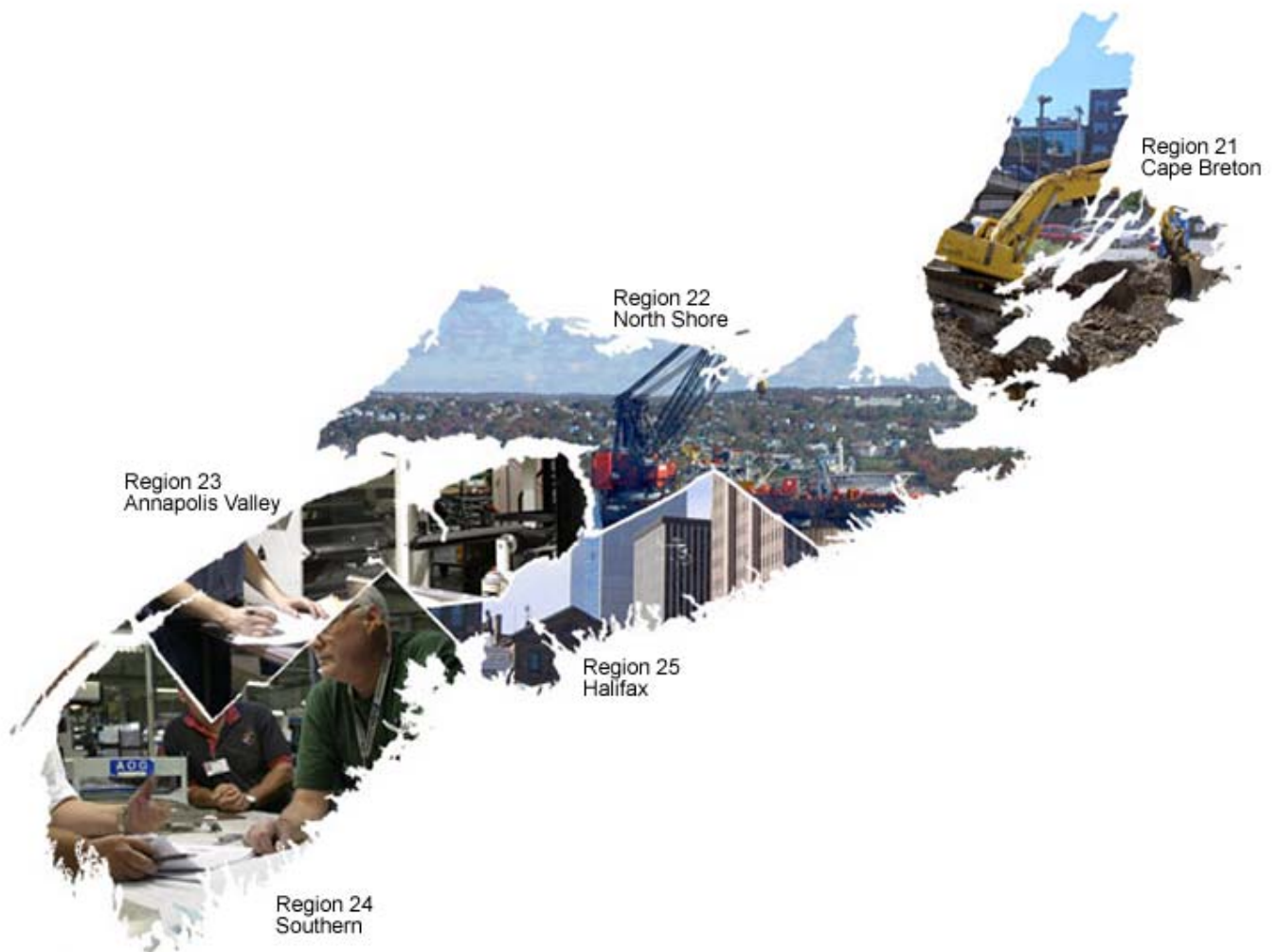


# Labour Market Monthly

January 2007



  
**NOVA SCOTIA**

**Finance**  
Economics and Statistics

---

Inquiries or suggestions with regards to the *Labour Market Monthly* or data contained within are welcome and should be directed to:

Bill Steele  
Economics & Statistics Division  
Nova Scotia Department of Finance  
1723 Hollis Street, PO Box 187  
Halifax, Nova Scotia, B3J 2N3

Telephone: (902) 424-6131  
Facsimile: (902) 424-0714  
E-mail: [steelewrnsstats@gov.ns.ca](mailto:steelewrnsstats@gov.ns.ca)  
Web Site: <http://www.gov.ns.ca/finance/statistics/agency/>

# **Nova Scotia Labour Market Monthly**

January 2007

Economics & Statistics Division  
Nova Scotia Department of Finance  
1723 Hollis Street, PO Box 187  
Halifax, Nova Scotia, B3J 2N3

Telephone: (902) 424-6131  
Facsimile: (902) 424-0714  
E-mail: [nsstats@gov.ns.ca](mailto:nsstats@gov.ns.ca)  
Web Site: <http://www.gov.ns.ca/finance/statistics/agency/>

ISSN 1718-5521 (Online)



**Table of Contents**

<b>Introduction .....</b>	<b>1</b>
<b>Highlights .....</b>	<b>3</b>
<b>Feature .....</b>	<b>7</b>
<b>Other Key Employment Indicators .....</b>	<b>9</b>
<b>Appendix I – Statistical Tables .....</b>	<b>13</b>
<b>Appendix II – Glossary .....</b>	<b>23</b>



## Introduction

### About the Labour Market Monthly

The *Labour Market Monthly*<sup>1</sup>, produced monthly by the Economics & Statistics Division of the Nova Scotia Department of Finance, is based primarily on data from the *Labour Force Survey (LFS)*, a household survey carried out monthly by Statistics Canada. The *LFS* is a sample of individuals who are representative of the civilian, non-institutionalised population 15 years of age or older in Canada's ten provinces. Specifically excluded from the coverage of the *LFS* are residents of the Territories, persons living on Indian Reserves, full-time members of the Canadian Armed Forces and institutional residents. These groups represent an exclusion of approximately 2 per cent of the population aged 15 or over. As of January 2006, the sample size has been approximately 53,372 households across Canada, with 2,873 of those in Nova Scotia.

Since its inception in 1945, the objectives of the *LFS* have been to divide the working-age population into three mutually exclusive classifications—employed, unemployed and not in the labour force—and to provide descriptive and explanatory data on each of these categories. Data from the *Survey* provide information on major labour market trends such as shifts in employment across industrial sectors, hours worked, labour force participation and employment rates.

The *Labour Market Monthly* contains: 1) year-to-date *LFS* highlights; 2) summary tables of selected labour force characteristics including labour force, employment, unemployment, unemployment rate and participation rate for Canada, the provinces, and CMAs; 3) a feature article; and 4) a selection of additional

key employment indicators obtained from other Statistics Canada surveys.

The *Labour Market Monthly* emphasizes the Nova Scotia employment situation and includes tables for Nova Scotia, its economic regions, and the Metropolitan Halifax area. The *Labour Force Monthly* coincides with Statistics Canada's Labour Force Survey release dates and will be available on our web site that day:

[http://www.gov.ns.ca/finance/publish/publicatio  
nsb.asp?id=Pub19](http://www.gov.ns.ca/finance/publish/publicatio/nsb.asp?id=Pub19)

Specific release dates each month are noted below:

### Labour Force Survey Release Dates 2007

<b>Data for:</b>	<b>Release Date:</b>
January	February 9, 2007
February	March 9, 2007
March	April 5, 2007
April	May 11, 2007
May	June 8, 2007
June	July 6, 2007
July	August 10, 2007
August	September 7, 2007
September	October 5, 2007
October	November 2, 2007
November	December 7, 2007
December	January 11, 2008

Source: Statistics Canada, Catalogue No. 71-001-XIE;  
<http://www.statcan.ca/english/Release/index.htm>

<sup>1</sup> Effective March 10, 2006, the *Labour Market Report* replaces the former *Employment Situation Report* and *Labour Market Report* of the Economics & Statistics Division.



**Highlights**

**LFS Release – January 2007**

(February 2007 will be released March 9, 2007)

Refer to *Appendix I* for a series of statistical tables indicating key labour force characteristics for current month, last month and same month a year ago:

Employment Situation:  
 Table 1 – Basic Characteristics, Canada/Provinces  
 Table 2 – NS Economic Regions/Halifax CMA  
 Table 3 – Job Tenure, Canada/Provinces  
 Table 4 – Employment by Sector, Canada & NS  
 Table 5 – CMAs, Canada

*Appendix II* provides a glossary of definitions, concepts/methods and sources associated with the labour market information covered in the *Labour Market Monthly* publication.

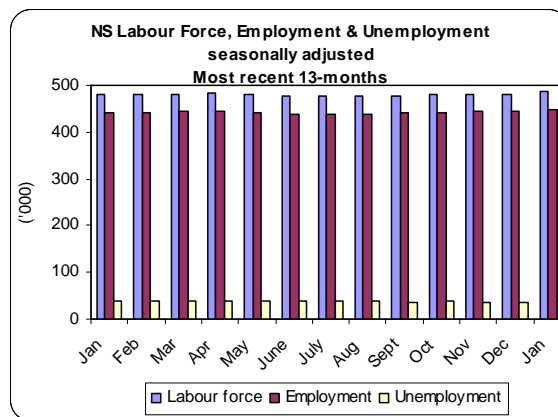
**Seasonally Adjusted (month over month and year over year)**

In Nova Scotia January 2007, labour force increased 1.4 per cent over December 2006 to 487,000 and increased 1.4 per cent over January 2006. Since last month, employment increased 0.8 per cent to 449,100 and increased 1.4 per cent over January 2006. Unemployment increased 8.0 per cent over December 2006 to 37,900 and increased 0.5 per cent over January 2006. The unemployment rate increased 0.5 percentage points over December 2006 to 7.8 per cent and remained unchanged from January 2006.

In Canada January 2007, labour force increased 0.6 per cent over December 2006 to 17.8 million and increased 2.0 per cent over January 2006. Employment increased 0.5 per cent over December 2006 to 16.7 million and rose 2.4 per cent over January 2006. Unemployment increased 2.0 per cent over last month to 1.1 million and declined 4.3 per cent over January 2006. The unemployment rate increased 0.1

percentage points over December 2006 to 6.2 per cent and declined 0.4 percentage points over January 2006.

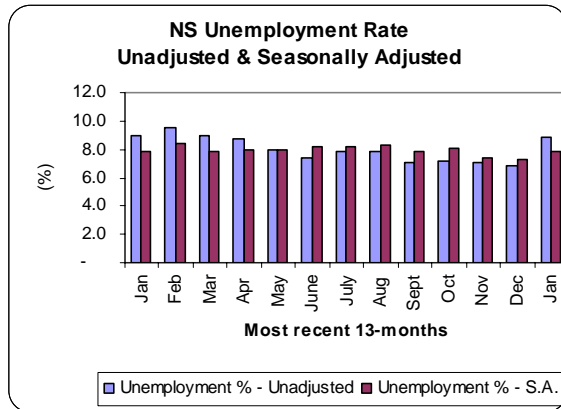
On a seasonally adjusted three-month moving average basis, the unemployment rate for the Halifax Census Metropolitan Area (CMA) in January 2007 was 4.4 per cent, a decrease of 0.2 percentage points over last month. In January 2007, the Halifax CMA rate stood as the lowest rate east of Kingston, Ontario.



Source: Statistics Canada, *Labour Force Survey*, Catalogue No. 71-001-XIE

**Trend – Year to date**

Employment in Nova Scotia started 2007 on a positive note with a 1.4 per cent increase over January 2006, following a 0.8 per cent increase from December 2006. This jump start in employment growth is a change from the trend established in 2006, where employment growth was down slightly. Such a jump start, however, should be viewed with caution, given that it is only a one month observation, and that Statistics Canada has just recently revised the seasonally adjusted estimates using the latest seasonal factors going back three years (January 2004 onwards). The coming months will tell whether or not the growth trend will continue.



Source: Statistics Canada, *Labour Force Survey*, Catalogue No. 71-001-XIE

The labour supply (labour force) for January, over the same month in 2006, also had an increase of 1.4 per cent. The labour participation rate reflects the increase in labour supply with an increase of 0.8 percentage points in January to 58.8 per cent. Thus, the net impact of labour demand growing at the same rate as labour supply over the year period, has resulted in no change in the seasonally adjusted unemployment rate at 7.8 per cent.

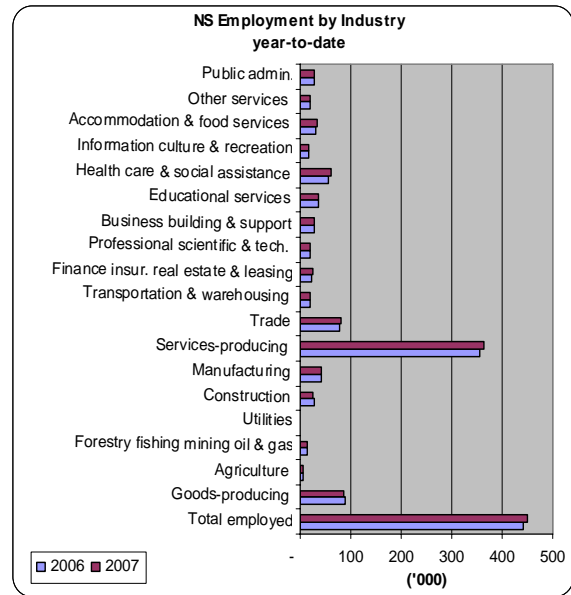
**Labour Force Basic Characteristics, Nova Scotia  
 Seasonally adjusted**

	Jan 2006	Jan 2007
Population ('000)	762.2	763.5
Labour Force ('000)	480.5	487.0
Employment ('000)	442.7	449.1
Full-time ('000)	361.8	369.1
Part-time ('000)	81.0	79.9
Unemployment ('000)	37.7	37.9
Unemployment (%)	7.8	7.8
Participation (%)	63.0	63.8
Employment (%)	58.1	58.8

Source: Compiled by Economics & Statistics Division, NS Department of Finance, using Statistics Canada LFS data.

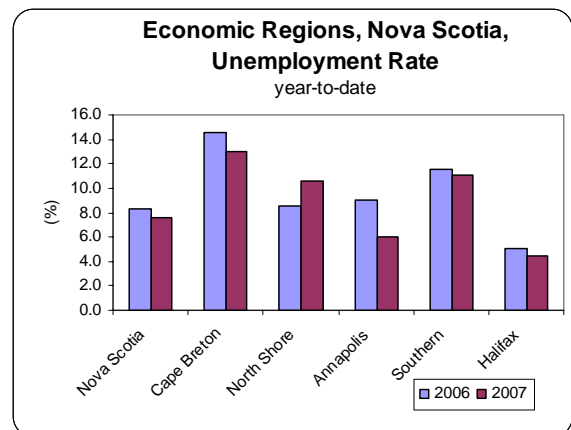
Where did the employment growth come from? A review of employment growth by industries (seasonally adjusted) over the January to January period suggests employment growth was driven by a several industries. Manufacturing; Finance, Insurance and Real estate; Business, Building and Support Services; Health and Social Assistance; and Food and Accommodation sectors all showed healthy employment growth. Manufacturing helped to

counter the drop in the employment growth of 3.4 per cent for all industries in the Goods Producing sector. Employment growth in the Service Producing sector for the same period was up 2.6 per cent.



Source: Compiled by Economics & Statistics Division, NS Department of Finance, using Statistics Canada LFS data.

A geographical review of employment growth for January 2007 over January 2006 based on the 3-month-moving average estimates within the province indicates that most of the employment gains occurred within the HRM region. There was also a slight gain in South Shore region.



Source: Compiled by Economics & Statistics Division, NS Department of Finance, using Statistics Canada LFS data.

NOTE: Labour force estimates at the sub-provincial level should always be viewed with caution, given the error estimates attached to smaller sampling sizes especially with the recent reductions to the overall sample size by Statistics Canada.

It should be noted that Statistics Canada highlighted the changes in employment from December 2006 to January 2007 for Nova Scotia in this month's release of the labour force in The Daily.

*"Employment in Nova Scotia rose by 4,000 in January. Increases in accommodation and food services; manufacturing; and professional, scientific and technical services were tempered by a loss in construction. As was the case in many provinces in January, an expansion in the number of people in the labour force looking for work caused the unemployment rate in Nova Scotia to increase by 0.5 percentage points to 7.8%."*

**Seasonally adjusted changes:**

Monthly seasonally adjusted estimates from the Labour Force Survey have been revised using the latest seasonal factors, going back three years (January 2004 onwards). They are now available on CANSIM (Tables 282-0087 to 282-0094).

**LFS historic data:**

The 2006 Labour Force Historical Review on CD-ROM (71F0004XCB, \$209) will be available February 19<sup>th</sup>, 2007.



## Feature - Retirement Age Trends

### Retirement Age Trend - Overview

Due to increasing interest in measuring trends in retirement age in the latter part of the 1990s, Statistics Canada developed a method of measuring the age of Canadians at retirement using the Labour Force Survey (LFS)<sup>1</sup>. By reorganizing and analyzing its data back to 1976, it was apparent the age of retirement had changed dramatically over time.

In Canada, the median age was close to 65 in the late 1970s and early 1980s. Starting in the mid-1980s, it declined considerably. The statistics of the mid-1990s were undoubtedly affected by early retirement incentives<sup>2</sup>.

The lowering in 1987 of the minimum age at which one could draw benefits from the Canada Pension Plan created a sharp drop in retirement age between 1986 and 1987. During the 1990s, the age of retirement was influenced by government cutbacks, company downsizing, early retirement incentives, geographical location, self-employment status, tenure in the public and private sector, etc. As predicted at that time, the average age of retirement has been relatively level since.

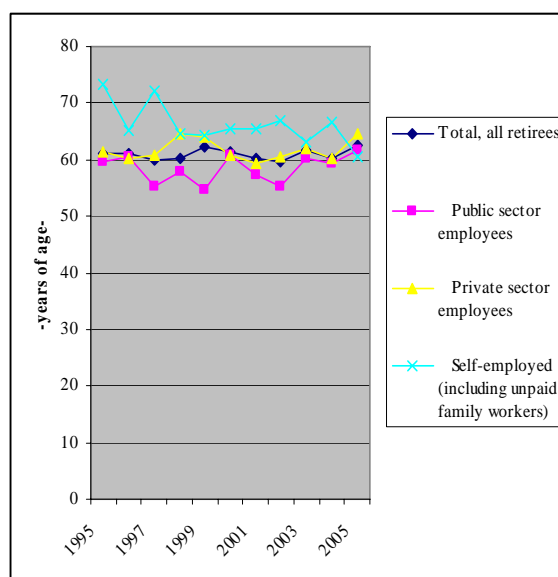
While many with higher levels of education and long-term jobs continue to leave early, many people are still working close to, or beyond, the traditional retirement age. Many considerations influence the change in timing of retirement, e.g., opportunity for flexibility in entering new or continued careers in other part-time or full-time, whether contract or casual (which can capitalize on specialized skills, knowledge and/or

experience), or in self-employment, general health and improved life expectancy, legislation being introduced by several provinces that allows persons to work beyond age 65, the need or desire to maintain a certain standard of living or provide financial support to other family members, working as a means of occupying one's time, some form of employment as a transitional adjustment period from full-time work to full retirement, etc.

### Retirement Age Trend - Nova Scotia

During 2005, the mean retirement age of women in Nova Scotia was 62.6, while the retirement age of men was 62.1. The mean age of retirement of all employed people of Nova Scotia increased from 61.2 in 1995 to 62.6 in 2005. By class of worker, the mean age of retirement within the public sector increased from 59.7 to 61.8; the mean age of retirement within the private sector increased from 61.4 to 64.6 years, while that of the self-employed declined from 73.3 to 60.6 from 1995 to 2005.

**Mean Age of Retirement, Nova Scotia  
1995 to 2005**



Source: Statistics Canada, LFS, special tabulation

<sup>1</sup> The LFS asks people who are not working, and who have left their last job within the year prior to being surveyed, why they left this job. One of the responses is "retired". The average or median retirement age is calculated from this variable and the resulting numbers are run comparatively close to one another.

<sup>2</sup> Statistics Canada, *Labour Income and Perspectives, Measuring the Age of Retirement*, Catalogue No. 75-001-XPE, Summer 1997.

Population in Nova Scotia continues to age. In the past ten years alone, the percentage of the population aged 60 and over increased from 17.0 per cent in 1996 of the total population to 20.1 per cent in 2006. For those 45 to 59 years of age—the middle-aged “baby boomers”—the comparative change was from 17.7 per cent of total population in 1996 to 23.2 per cent of total population in 2006. Because of this growth, the characteristics of the baby boom generation is expected to progressively boost the share of the labour force facing retirement decisions. Two noteworthy trends that are expected to influence future retirement trends are the likelihood that this generation will choose to remain in the labour market longer and possibly beyond age 65, as well as, that baby boom women will be the first generation of women to have participated in the paid labour force for most of their adult lives. For these and many other reasons, the movement of the baby boomers into retirement is expected to significantly impact institutional and cultural changes.

Statistics Canada Sources:

*Guide to the Labour Force Survey, 2006*, Catalogue 71-543-GIE

*Labour Income and Income Perspectives*, Catalogue No. 75-001-XIE—*Retirement*, May 2006; *More Seniors at Work*, February 2004; *Measuring the Age of Retirement*, September 1997

*New Frontiers of Research on Retirement*, Catalogue No. 75-511-XIE

Other—Since the LFS began publishing data on retirement age, the subject has been covered in many Statistics Canada special features (including numerous articles in *Perspectives on Labour and Income*, Catalogue No. 75-001-XPE, see: Winter 2006, page 77, as well as, in many free publications available on the Statistics Canada website:

[www.statcan.ca](http://www.statcan.ca)

## Other Key Employment Indicators

Along with the monthly Labour Force Survey, several other data sources provide an overview of changes occurring in the labour market of the province. The following tables reflect some of those activities.

### Total Wages & Salaries

*4<sup>th</sup> quarter 2006 will be released March 7, 2007)*

#### Year-to-date (January-September)

In the first nine months of 2006, total wages and salaries were \$10,742.4 billion in Nova Scotia. This represented a growth of 4.2 per cent over the first nine months 2005. Canada's total wages and salaries figure, of \$473,423.6 billion in the first nine months of 2006, exhibited a 5.9 per cent increase the same period a year earlier. In the January to September period of 2006, the Nova Scotia figure represented 2.3 per cent of the national total.

#### Total Wages & Salaries, Canada & Nova Scotia

	(\$billions) Jan-Sept 2005	Jan-Sept 2006
Canada	446,945.7	473,423.6
Nova Scotia	10,313.1	10,742.4

*Labour income estimates are based on the North American Industry Classification System (NAICS) and are released quarterly in conjunction with the National Income and Expenditure Accounts estimates.*

Source: Statistics Canada, Catalogue No. 13F0016XPB; CANSIM Table 382-0006

For Nova Scotia in the first nine months of 2006, \$2,125.4 billion of total wages and salaries was from the goods producing sector and \$8,617.0 billion was from the service producing sector, representing 19.8 per cent and 80.2 per cent, respectively, of the total. Manufacturing industries were the major component within the goods producing sector (45.0%). The greatest contributors to the service producing sector—professional and personal service industries, and trade—at 19.3 per cent and 17.5 per cent, respectively.

### Wages & Salaries – Nova Scotia (NAICS-based)

(\$billions – actual)

Industry	Jan-Sept 2005	Jan-Sept 2006	% Change Jan-Sept'05 – Jan-Sept 2006
<b>All Goods Producing</b>	<b>2,091</b>	<b>2,125</b>	<b>1.6</b>
Agric., Forestry, Fishing & Hunting	232	216	-6.9
Mining & Oil & Gas	107	114	6.6
Manufacturing	951	957	0.6
Construction	693	728	5.1
Utilities	108	110	1.9
<b>All Servicing Producing</b>	<b>8,222</b>	<b>8,617</b>	<b>4.8</b>
Trade	1,425	1,512	6.1
Transportation & Storage	542	558	3.0
Information & Cultural	282	298	5.7
Finance & Real Estate	740	773	4.5
Professional & Personal Service	1,570	1,659	5.7
Educational Services	948	1,002	4.5
Health Care & Social Asst.	1,258	1,349	7.2
Public Administration	1,458	1,467	0.6

Numbers may not total due to rounding

Q – Quarter

Source: Statistics Canada, *Estimates of Labour Income*, 13F0016XPB; CANSIM Table 382-0006

### Average Weekly Earnings (including overtime)

(December 2006 will be released February 26, 2007)

#### Year-to-Date (January-November)

In the January to November period of 2006, the average earnings for all employees in Nova Scotia increased \$16.50, or 2.6 per cent, over the same period in 2005 to \$651.51 per week. In comparison, the average earnings for all employees in Canada rose \$21.90 or 3.0 per cent, to \$748.84 per week. Nova Scotia's 2006 year-to-date average weekly earnings were 87.0 per cent of the Canadian average.

In Nova Scotia average weekly employment was 393,696 (all employees as reported in SEPH) in January to November 2006, a 0.9 per cent increase from the same period in 2005. In

comparison, Canada's weekly employment was 14.0 million, an increase of 1.9 per cent from the same period in 2005.

**Average Weekly Earnings Data  
Canada and Nova Scotia  
Year-to-Date<sup>p</sup>  
(all employees)**

	Canada	Nova Scotia
Average Weekly Earnings – Industrial Aggregate (includes Overtime) (\$)		
Jan-Nov '05	726.94	635.01
Jan-Nov '06	748.84	651.51
Average Weekly Employment (#)		
Jan-Nov '05	13,735,194	390,131
Jan-Nov '06	13,999,873	393,676

<sup>p</sup> preliminary

Source: Statistics Canada, Employment, Earnings & Hours, Catalogue No. 72-002-XIB; CANSIM Tables 281-0023 and 281-0026

**Average Weekly Earnings – by Industry  
Nova Scotia  
Year-to-Date<sup>p</sup>  
(including overtime)  
(NAICS-based) (\$)**

Industry	Jan-Nov 2005	Jan-Nov 2006	Per Cent Change Jan-Nov 2005 to 2006
<b>Industrial Aggregate</b>	<b>635.01</b>	<b>651.51</b>	<b>2.6</b>
Goods Producing	767.77	793.21	3.3
Construction	722.29	744.88	3.1
Manufacturing	774.84	801.19	3.4
Service Producing	607.49	623.49	2.6
Trade	497.43	520.60	4.7
Transportation & Warehousing	752.63	745.21	-1.0
Information & Culture	747.76	818.06	9.4
Finance & Insurance	913.69	876.96	-4.0
Professional, Scientific & Technical	786.07	804.37	2.3
Admin., Support, Waste Mngt. & Remediation	506.30	521.63	3.0
Educational Services	749.89	702.61	-6.3
Health Care & Social Assistance	668.67	694.13	3.8
Arts, Entertainment & Recreation	302.71	316.92	4.7
Accommodation & Food Services	289.17	306.50	6.0
Other Services (excl. Public Admin.)	461.48	479.82	4.0
Public Administration	853.78	878.26	2.9

<sup>p</sup> preliminary

Source: Statistics Canada, Employment, Earnings & Hours, Catalogue No. 72-002-XIB; CANSIM Table 281-0026

In the January to November 2006 period, average weekly earnings in Nova Scotia's goods producing sector increased 3.3 per cent over the same period in 2005 to \$793.21, while in the service producing sector, average weekly earnings increased 2.6 per cent to \$623.49. In industries for which data is available, year-to-date 2006 average weekly earnings ranged from \$306.50 in accommodation and food services industries to \$878.26 in public administration.

**Employment Insurance**

(December 2006 will be released February 27, 2007)

**Year-to-Date (January to November)**

In the January to November 2006 period, there was a monthly average of 40,215 beneficiaries in Nova Scotia that received regular EI benefits. This figure was 1.6 per cent lower than the comparable period in 2005. Nationwide, there was an average of 760,245 beneficiaries or 5.4 per cent fewer than the January to November 2005 monthly average.

**EI Beneficiaries and Benefits  
Canada and Nova Scotia  
Year to Date<sup>p</sup>**

	Canada		Nova Scotia	
	Avg. <sup>1</sup> #	Total \$ Millions	Avg. <sup>1</sup> #	Total \$ Millions
Jan-Nov'05	803,596	13,538.9	40,873	633.6
Jan-Nov'06	760,245	13,372.5	40,215	669.6

<sup>1</sup> Preliminary year-to-date monthly average

Source: Statistics Canada, CANSIM Table 276-0001 and 276-0005

In Nova Scotia a total of \$669.6 million was paid in EI benefit payments during January to November 2006. This figure was 5.7 per cent higher than in January to November 2005. There was \$13.4 billion paid in EI benefit payments nationwide during January to November 2006, or 1.2 per cent less than in the same period in 2005.

**Public Sector Employment – Nova Scotia**

*4<sup>th</sup> quarter 2006 will be released February 26, 2007)*

**Year-to-date (January-September)**

Data from the Statistics Canada *Public Sector FMS Reports* indicates that, in the first nine months, there was an average of 113,316 public sector employees in Nova Scotia, an increase of 5.0 per cent over the first nine months of 2005. The government portion increased 5.1 per cent to 105,733, while the business enterprises portion rose 4.1 per cent to 7,583. The federal government figure rose 0.8 per cent or by 187 people. The military component of federal employees in Nova Scotia decreased 2.8 per cent or by 309 persons to 10,841 in the first nine months of 2006.

**Public Sector Employment – Nova Scotia**  
**Year-to-Date<sup>P</sup>**  
(number)

	Jan- Sept 2005	Jan- Sept 2006 <sup>P</sup>	Change Jan- Sept'05/ Jan- Sept'06
<b>Government</b>			
Federal (incl. Military)	23,745	23,932	0.8
<i>Military</i>	10,850	10,541	-2.8
Provincial General	11,249	11,299	0.4
Universities & Colleges	9,012	9,761	8.3
Health & Social Services	29,328	29,500	0.6
Local General	11,374	11,774	3.5
School Boards	15,883	19,467	22.6
<b>Total Government</b>	<b>100,590</b>	<b>105,733</b>	<b>5.1</b>
<b>Government Business Enterprises</b>	<b>7,283</b>	<b>7,583</b>	<b>4.1</b>
Federal	4,481	4,731	5.6
Provincial	2,315	2,364	2.1
Local	488	488	-
<b>Total Public Sector</b>	<b>107,874</b>	<b>113,316</b>	<b>5.0</b>

Q – quarter

Figures by jurisdiction do not always add to published totals. Quarterly data is not comparable to annual data due to normal seasonal changes in some groups, e.g., universities, schools.

Source: Statistics Canada, Public Institutions Division, *Public Sector FMS Reports*; CANSIM Tables 183-0002 and 183-0004.

Public sector wages and salaries increased 1.3 per cent in the first nine months of 2006 over the same period in 2005 to \$3.8 billion, with 92.3 per cent of total public sector wages and salaries from total government and 7.7 per cent from government business enterprises.

**Public Sector Wages & Salaries – Nova Scotia**  
**Year-to-Date<sup>P</sup>**  
(Millions)

	Jan- Sept 2005	Jan- Sept 2006 <sup>P</sup>	Change Jan- Sept'05/ Jan- Sept'06
<b>Government</b>			
Federal (incl. Military)	1,066	1,061	-0.5
<i>Military</i>	483	466	-3.5
Provincial General	343	364	6.1
Universities & Colleges	378	368	-2.6
Health & Social Services	962	976	1.5
Local General	207	215	3.9
School Boards	529	533	0.8
<b>Total Government</b>	<b>3,485</b>	<b>3,518</b>	<b>0.9</b>
<b>Government Business Enterprises</b>	<b>277</b>	<b>295</b>	<b>6.5</b>
Federal	215	231	7.4
Provincial	51	53	3.9
Local	11	11	0.0
<b>Total Public Sector</b>	<b>3,762</b>	<b>3,812</b>	<b>1.3</b>

Q – quarter

Figures by jurisdiction do not always add to published totals. Quarterly data is not comparable to annual data due to normal seasonal changes in some groups, e.g., universities, schools.

Source: Statistics Canada, Public Institutions Division, *Public Sector FMS Reports*; CANSIM Tables 183-0002 and 183-0004.



## Appendix I - Statistical Tables



**Table 1. Basic Characteristics, Canada/Provinces**

Canada								
	Actual				Seasonally Adjusted			Annual Change
	Jan 2006	Dec 2006	Jan 2007	Annual Change	Jan 2006	Dec 2006	Jan 2007	
Population ('000)	26,020.0	26,357.6	26,392.3	372.3	26,020.0	26,329.8	26,392.3	372.3
Labour Force ('000)	17,179.1	17,577.9	17,547.2	368.1	17,475.7	17,687.2	17,825.8	350.1
Employment ('000)	15,949.1	16,574.5	16,364.9	415.8	16,330.1	16,577.9	16,729.3	399.2
Unemployed ('000)	1,230.0	1,003.4	1,182.3	(47.7)	1,145.6	1,109.3	1,096.5	(49.1)
Unemployment Rate (%)	7.2	5.7	6.7	(0.5)	6.6	6.3	6.2	(0.4)
Participation Rate (%)	66.0	66.7	66.5	0.5	67.2	67.2	67.5	0.3
Employment Rate (%)	61.3	62.9	62.0	0.7	62.8	63.0	63.4	0.6

Nova Scotia								
	Actual				Seasonally Adjusted			Annual Change
	Jan 2006	Dec 2006	Jan 2007	Annual Change	Jan 2006	Dec 2006	Jan 2007	
Population ('000)	762.2	763.5	763.5	1.3	762.2	763.5	763.5	1.3
Labour Force ('000)	466.8	476.6	474.6	7.8	480.5	480.5	487.0	6.5
Employment ('000)	425.0	444.5	432.4	7.4	442.7	445.4	449.1	6.4
Unemployed ('000)	41.9	32.2	42.2	0.3	37.7	35.1	37.9	0.2
Unemployment Rate (%)	9.0	6.8	8.9	(0.1)	7.8	7.3	7.8	-
Participation Rate (%)	61.2	62.4	62.2	1.0	63.0	62.9	63.8	0.8
Employment Rate (%)	55.8	58.2	56.6	0.8	58.1	58.3	58.8	0.7

Newfoundland and Labrador								
	Actual				Seasonally Adjusted			Annual Change
	Jan 2006	Dec 2006	Jan 2007	Annual Change	Jan 2006	Dec 2006	Jan 2007	
Population ('000)	429.0	426.4	426.1	(2.9)	429.0	426.4	426.1	(2.9)
Labour Force ('000)	238.8	246.6	242.7	3.9	250.2	253.9	255.0	4.8
Employment ('000)	193.9	211.9	198.6	4.7	209.3	218.9	215.8	6.5
Unemployed ('000)	44.9	34.7	44.0	(0.9)	40.9	35.0	39.2	(1.7)
Unemployment Rate (%)	18.8	14.1	18.1	(0.7)	16.3	13.8	15.4	(0.9)
Participation Rate (%)	55.7	57.8	57.0	1.3	58.3	59.5	59.8	1.5
Employment Rate (%)	45.2	49.7	46.6	1.4	48.8	51.3	50.6	1.8

Prince Edward Island								
	Actual				Seasonally Adjusted			Annual Change
	Jan 2006	Dec 2006	Jan 2007	Annual Change	Jan 2006	Dec 2006	Jan 2007	
Population ('000)	111.9	112.7	112.8	0.9	111.9	112.7	112.8	0.9
Labour Force ('000)	73.5	76.3	75.3	1.8	76.9	78.3	78.6	1.7
Employment ('000)	63.0	66.0	64.8	1.8	68.7	68.6	70.2	1.5
Unemployed ('000)	10.5	10.4	10.5	-	8.2	9.7	8.4	0.2
Unemployment Rate (%)	14.3	13.6	13.9	(0.4)	10.7	12.4	10.7	-
Participation Rate (%)	65.7	67.7	66.8	1.1	68.7	69.5	69.7	1.0
Employment Rate (%)	56.3	58.6	57.4	1.1	61.4	60.9	62.2	0.8

Population is for those 15 years of age and over.

Annual Change is in thousands or percentage points as shown in row headings.

**Table 1. Basic Characteristics, Canada/Provinces**

<b>New Brunswick</b>								
	Actual				Seasonally Adjusted			Annual Change
	Jan 2006	Dec 2006	Jan 2007	Annual Change	Jan 2006	Dec 2006	Jan 2007	
Population ('000)	611.3	611.2	611.4	0.1	611.3	611.2	611.4	0.1
Labour Force ('000)	380.1	380.1	375.4	(4.7)	394.1	387.1	389.0	(5.1)
Employment ('000)	342.9	349.0	342.4	(0.5)	359.2	354.3	357.3	(1.9)
Unemployed ('000)	37.2	31.0	32.9	(4.3)	34.9	32.8	31.7	(3.2)
Unemployment Rate (%)	9.8	8.2	8.8	(1.0)	8.9	8.5	8.1	(0.8)
Participation Rate (%)	62.2	62.2	61.4	(0.8)	64.5	63.3	63.6	(0.9)
Employment Rate (%)	56.1	57.1	56.0	(0.1)	58.8	58.0	58.4	(0.4)
<b>Quebec</b>								
	Actual				Seasonally Adjusted			Annual Change
	Jan 2006	Dec 2006	Jan 2007	Annual Change	Jan 2006	Dec 2006	Jan 2007	
Population ('000)	6,221.8	6,282.8	6,288.9	67.1	6,221.8	6,282.8	6,288.9	67.1
Labour Force ('000)	4,023.5	4,064.1	4,057.3	33.8	4,090.3	4,095.7	4,119.9	29.6
Employment ('000)	3,639.1	3,757.5	3,701.1	62.0	3,745.0	3,789.4	3,804.1	59.1
Unemployed ('000)	384.4	306.6	356.3	(28.1)	345.3	306.3	315.7	(29.6)
Unemployment Rate (%)	9.6	7.5	8.8	(0.8)	8.4	7.5	7.7	(0.7)
Participation Rate (%)	64.7	64.7	64.5	(0.2)	65.7	65.2	65.5	(0.2)
Employment Rate (%)	58.5	59.8	58.9	0.4	60.2	60.3	60.5	0.3
<b>Ontario</b>								
	Actual				Seasonally Adjusted			Annual Change
	Jan 2006	Dec 2006	Jan 2007	Annual Change	Jan 2006	Dec 2006	Jan 2007	
Population ('000)	10,165.9	10,290.9	10,301.5	135.6	10,165.9	10,290.9	10,301.5	135.6
Labour Force ('000)	6,786.4	6,917.8	6,892.5	106.1	6,899.2	6,968.6	7,001.0	101.8
Employment ('000)	6,337.6	6,543.9	6,437.2	99.6	6,452.8	6,546.6	6,554.2	101.4
Unemployed ('000)	448.8	373.9	455.3	6.5	446.4	422.0	446.7	0.3
Unemployment Rate (%)	6.6	5.4	6.6	-	6.5	6.1	6.4	(0.1)
Participation Rate (%)	66.8	67.2	66.9	0.1	67.9	67.7	68.0	0.1
Employment Rate (%)	62.3	63.6	62.5	0.2	63.5	63.6	63.6	0.1
<b>Manitoba</b>								
	Actual				Seasonally Adjusted			Annual Change
	Jan 2006	Dec 2006	Jan 2007	Annual Change	Jan 2006	Dec 2006	Jan 2007	
Population ('000)	889.8	893.8	894.3	4.5	889.8	893.8	894.3	4.5
Labour Force ('000)	603.3	610.1	611.0	7.7	612.4	612.6	619.0	6.6
Employment ('000)	574.1	585.4	579.8	5.7	585.7	587.6	590.7	5.0
Unemployed ('000)	29.2	24.7	31.3	2.1	26.7	25.0	28.3	1.6
Unemployment Rate (%)	4.8	4.0	5.1	0.3	4.4	4.1	4.6	0.2
Participation Rate (%)	67.8	68.3	68.3	0.5	68.8	68.5	69.2	0.4
Employment Rate (%)	64.5	65.5	64.8	0.3	65.8	65.7	66.1	0.3

Population is for those 15 years of age and over.

Annual Change is in thousands or percentage points as shown in row headings.

**Table 1. Basic Characteristics, Canada/Provinces**

<b>Saskatchewan</b>								
	Actual				Seasonally Adjusted			Annual Change
	Jan 2006	Dec 2006	Jan 2007	Annual Change	Jan 2006	Dec 2006	Jan 2007	
Population ('000)	747.7	746.3	747.0	(0.7)	747.7	746.3	747.0	(0.7)
Labour Force ('000)	500.1	517.3	517.1	17.0	509.6	524.0	526.8	17.2
Employment ('000)	470.8	497.3	493.4	22.6	483.1	502.8	505.1	22.0
Unemployed ('000)	29.3	20.0	23.8	(5.5)	26.5	21.2	21.6	(4.9)
Unemployment Rate (%)	5.9	3.9	4.6	(1.3)	5.2	4.0	4.1	(1.1)
Participation Rate (%)	66.9	69.3	69.2	2.3	68.2	70.2	70.5	2.3
Employment Rate (%)	63.0	66.6	66.1	3.1	64.6	67.4	67.6	3.0

<b>Alberta</b>								
	Actual				Seasonally Adjusted			Annual Change
	Jan 2006	Dec 2006	Jan 2007	Annual Change	Jan 2006	Dec 2006	Jan 2007	
Population ('000)	2,596.6	2,692.1	2,703.1	106.5	2,596.6	2,692.1	2,703.1	106.5
Labour Force ('000)	1,854.1	1,963.3	1,975.9	121.8	1,879.8	1,974.4	1,997.7	117.9
Employment ('000)	1,780.2	1,899.5	1,901.9	121.7	1,814.6	1,908.4	1,932.5	117.9
Unemployed ('000)	73.9	63.8	74.0	0.1	65.2	66.0	65.2	-
Unemployment Rate (%)	4.0	3.2	3.7	(0.3)	3.5	3.3	3.3	(0.2)
Participation Rate (%)	71.4	72.9	73.1	1.7	72.4	73.3	73.9	1.5
Employment Rate (%)	68.6	70.6	70.4	1.8	69.9	70.9	71.5	1.6

<b>British Columbia</b>								
	Actual				Seasonally Adjusted			Annual Change
	Jan 2006	Dec 2006	Jan 2007	Annual Change	Jan 2006	Dec 2006	Jan 2007	
Population ('000)	3,483.8	3,538.0	3,543.7	59.9	3,483.8	3,538.0	3,543.7	59.9
Labour Force ('000)	2,252.5	2,325.6	2,325.4	72.9	2,282.7	2,340.7	2,352.0	69.3
Employment ('000)	2,122.5	2,219.6	2,213.4	90.9	2,169.0	2,218.5	2,250.2	81.2
Unemployed ('000)	130.0	106.0	112.0	(18.0)	113.7	122.2	101.8	(11.9)
Unemployment Rate (%)	5.8	4.6	4.8	(1.0)	5.0	5.2	4.3	(0.7)
Participation Rate (%)	64.7	65.7	65.6	0.9	65.5	66.2	66.4	0.9
Employment Rate (%)	60.9	62.7	62.5	1.6	62.3	62.7	63.5	1.2

Population is for those 15 years of age and over.

Annual Change is in thousands or percentage points as shown in row headings.

**Table 2. NS Economic Regions/Halifax CMA**

(unadjusted - three month moving average)

	Canada				Nova Scotia			
	Jan 2006	Dec 2006	Jan 2007	Annual Change	Jan 2006	Dec 2006	Jan 2007	Annual Change
Population ('000)	25,988.8	26,328.8	26,359.9	371.1	762.0	763.3	763.5	1.5
Labour Force ('000)	17,266.6	17,602.5	17,582.7	316.1	474.9	477.8	476.1	1.2
Employment ('000)	16,157.4	16,591.1	16,505.0	347.6	435.3	444.3	440.0	4.7
Unemployed ('000)	1,109.2	1,011.4	1,077.7	(31.5)	39.6	33.6	36.1	(3.5)
Unemployment Rate (%)	6.4	5.7	6.1	(0.3)	8.3	7.0	7.6	(0.7)
Participation Rate (%)	66.4	66.9	66.7	0.3	62.3	62.6	62.4	0.1
Employment Rate (%)	62.2	63.0	62.6	0.4	57.1	58.2	57.6	0.5

	1230 - Annapolis Valley				1210 - Cape Breton			
	Jan 2006	Dec 2006	Jan 2007	Annual Change	Jan 2006	Dec 2006	Jan 2007	Annual Change
Population ('000)	99.5	99.9	99.9	0.4	117.2	116.8	116.7	(0.5)
Labour Force ('000)	62.2	59.5	60.3	(1.9)	62.9	63.5	62.3	(0.6)
Employment ('000)	56.6	56.2	56.7	0.1	53.8	56.1	54.2	0.4
Unemployed ('000)	5.6	3.3	3.6	(2.0)	9.2	7.4	8.1	(1.1)
Unemployment Rate (%)	9.0	5.5	6.0	(3.0)	14.6	11.7	13.0	(1.6)
Participation Rate (%)	62.5	59.6	60.4	(2.1)	53.7	54.4	53.4	(0.3)
Employment Rate (%)	56.9	56.3	56.8	(0.1)	45.9	48.0	46.4	0.5

	250 - Halifax County				Halifax Metro (CMA)			
	Jan 2006	Dec 2006	Jan 2007	Annual Change	Jan 2006	Dec 2006	Jan 2007	Annual Change
Population ('000)	310.3	312.0	312.2	1.9	310.3	312.0	312.2	1.9
Labour Force ('000)	210.4	216.1	215.6	5.2	210.4	216.1	215.6	5.2
Employment ('000)	199.1	207.3	206.2	7.1	199.1	207.3	206.2	7.1
Unemployed ('000)	11.4	8.8	9.5	(1.9)	11.4	8.8	9.5	(1.9)
Unemployment Rate (%)	5.4	4.1	4.4	(1.0)	5.4	4.1	4.4	(1.0)
Participation Rate (%)	67.8	69.3	69.1	1.3	67.8	69.3	69.1	1.3
Employment Rate (%)	64.2	66.4	66.0	1.8	64.2	66.4	66.0	1.8

	1220 - North Shore				1240 - Southern			
	Jan 2006	Dec 2006	Jan 2007	Annual Change	Jan 2006	Dec 2006	Jan 2007	Annual Change
Population ('000)	131.2	131.0	131.0	(0.2)	103.8	103.6	103.6	(0.2)
Labour Force ('000)	80.4	78.5	78.4	(2.0)	58.9	60.3	59.4	0.5
Employment ('000)	73.6	70.8	70.1	(3.5)	52.2	53.8	52.8	0.6
Unemployed ('000)	6.8	7.7	8.3	1.5	6.8	6.4	6.6	(0.2)
Unemployment Rate (%)	8.5	9.8	10.6	2.1	11.5	10.6	11.1	(0.4)
Participation Rate (%)	61.3	59.9	59.8	(1.5)	56.7	58.2	57.3	0.6
Employment Rate (%)	56.1	54.0	53.5	(2.6)	50.3	51.9	51.0	0.7

Table 3. Job Tenure, Canada/Provinces

	Employment - Seasonally Adjusted (000's)											
	Total				Full-Time				Part-time			
	Jan 2006	Dec 2006	Jan 2007	Annual Change	Jan 2006	Dec 2006	Jan 2007	Annual Change	Jan 2006	Dec 2006	Jan 2007	Annual Change
<b>Canada</b>	16,330.1	16,640.4	16,729.3	399.2	13,382.4	13,637.2	13,683.1	300.7	2,947.7	3,003.2	3,046.1	98.4
<b>Newfoundland and Labrador</b>	209.3	218.9	215.8	6.5	175.8	184.7	183.2	7.4	33.4	34.2	32.6	(0.8)
<b>Prince Edward Island</b>	68.7	68.6	70.2	1.5	58.0	56.6	58.2	0.2	10.7	12.0	12.0	1.3
<b>Nova Scotia</b>	442.7	445.4	449.1	6.4	361.8	364.0	369.1	7.3	81.0	81.4	79.9	(1.1)
<b>New Brunswick</b>	359.2	354.3	357.3	(1.9)	297.1	297.8	300.5	3.4	62.1	56.5	56.8	(5.3)
<b>Quebec</b>	3,745.0	3,789.4	3,804.1	59.1	3,070.5	3,110.5	3,102.9	32.4	674.5	678.9	701.2	26.7
<b>Ontario</b>	6,452.8	6,546.6	6,554.2	101.4	5,310.4	5,354.6	5,353.4	43.0	1,142.4	1,191.9	1,200.8	58.4
<b>Manitoba</b>	585.7	587.6	590.7	5.0	466.5	472.4	478.5	12.0	119.2	115.2	112.2	(7.0)
<b>Saskatchewan</b>	483.1	502.8	505.1	22.0	390.3	407.7	409.8	19.5	92.9	95.1	95.4	2.5
<b>Alberta</b>	1,814.6	1,908.4	1,932.5	117.9	1,515.0	1,615.5	1,633.2	118.2	299.6	292.9	299.3	(0.3)
<b>British Columbia</b>	2,169.0	2,218.5	2,250.2	81.2	1,736.7	1,773.2	1,794.3	57.6	432.3	445.3	455.9	23.6

	Employment - Actual (000's)											
	Total				Full-Time				Part-time			
	Jan 2006	Dec 2006	Jan 2007	Annual Change	Jan 2006	Dec 2006	Jan 2007	Annual Change	Jan 2006	Dec 2006	Jan 2007	Annual Change
<b>Canada</b>	15,949.1	16,574.5	16,364.9	415.8	12,882.9	13,425.8	13,186.8	303.9	3,066.2	3,148.7	3,178.1	111.9
<b>Newfoundland and Labrador</b>	193.9	211.9	198.6	4.7	159.7	177.9	165.5	5.8	34.2	34.0	33.1	(1.1)
<b>Prince Edward Island</b>	63.0	66.0	64.8	1.8	51.8	53.1	52.1	0.3	11.2	12.9	12.7	1.5
<b>Nova Scotia</b>	425.0	444.5	432.4	7.4	339.1	358.4	349.3	10.2	85.9	86.1	83.1	(2.8)
<b>New Brunswick</b>	342.9	349.0	342.4	(0.5)	276.9	289.0	281.5	4.6	66.0	60.0	60.9	(5.1)
<b>Quebec</b>	3,639.1	3,757.5	3,701.1	62.0	2,942.8	3,037.8	2,966.1	23.3	696.3	719.7	735.0	38.7
<b>Ontario</b>	6,337.6	6,543.9	6,437.2	99.6	5,143.3	5,293.4	5,182.0	38.7	1,194.3	1,250.5	1,255.2	60.9
<b>Manitoba</b>	574.1	585.4	579.8	5.7	448.3	465.0	462.4	14.1	125.8	120.4	117.3	(8.5)
<b>Saskatchewan</b>	470.8	497.3	493.4	22.6	374.8	397.6	394.3	19.5	96.0	99.7	99.0	3.0
<b>Alberta</b>	1,780.2	1,899.5	1,901.9	121.7	1,464.8	1,594.4	1,585.1	120.3	315.4	305.2	316.8	1.4
<b>British Columbia</b>	2,122.5	2,219.6	2,213.4	90.9	1,681.5	1,759.2	1,748.5	67.0	441.0	460.3	464.9	23.9

Table 3 Job Tenure, Canada/Provinces

**Youth Statistics**

**15-24 Age Group - Seasonally Adjusted**

	Labour Force - 000's				Employment - 000's				Unemployment - %			
	Jan 2006	Dec 2006	Jan 2007	Annual Change	Jan 2006	Dec 2006	Jan 2007	Annual Change	Jan 2006	Dec 2006	Jan 2007	Annual Change
Canada	2,867.0	2,872.7	2,870.4	3.4	2,514.6	2,534.4	2,548.9	34.3	12.3	11.8	11.2	(1.1)
Newfoundland and Labrador	34.9	35.6	36.3	1.4	25.2	28.7	28.4	3.2	27.8	19.4	21.8	(6.0)
Prince Edward Island	13.5	13.9	14.3	0.8	11.7	11.9	11.8	0.1	13.3	15.1	17.5	4.2
Nova Scotia	82.9	80.3	80.9	(2.0)	72.6	69.0	71.0	(1.6)	12.4	13.9	12.2	(0.2)
New Brunswick	65.4	59.5	60.9	(4.5)	56.4	51.4	52.9	(3.5)	13.8	13.6	13.1	(0.7)
Quebec	636.6	627.9	627.0	(9.6)	545.7	540.8	550.1	4.4	14.3	13.9	12.3	(2.0)
Ontario	1,108.4	1,102.3	1,097.9	(10.5)	950.0	953.6	957.9	7.9	14.3	13.5	12.8	(1.5)
Manitoba	113.4	111.8	109.6	(3.8)	104.3	100.4	101.3	(3.0)	8.0	10.2	7.6	(0.4)
Saskatchewan	94.8	100.0	102.2	7.4	84.4	93.0	94.2	9.8	11.0	7.0	7.8	(3.2)
Alberta	341.6	359.4	356.3	14.7	317.3	339.3	333.7	16.4	7.1	5.6	6.3	(0.8)
British Columbia	375.5	382.0	385.0	9.5	347.0	346.3	347.6	0.6	7.6	9.3	9.7	2.1

**15-24 Age Group - Actual**

	Labour Force - 000's				Employment - 000's				Unemployment - %			
	Jan 2006	Dec 2006	Jan 2007	Annual Change	Jan 2006	Dec 2006	Jan 2007	Annual Change	Jan 2006	Dec 2006	Jan 2007	Annual Change
Canada	2,681.2	2,774.9	2,753.8	72.6	2,331.1	2,470.9	2,487.0	155.9	13.1	11.0	9.7	-3.4
Newfoundland and Labrador	31.3	33.1	33.2	1.9	21.6	26.8	26.7	5.1	30.7	19.0	19.6	-11.1
Prince Edward Island	12.0	13.0	12.9	0.9	9.6	11.0	10.5	0.9	19.2	15.4	19.4	0.2
Nova Scotia	75.7	76.3	76.9	1.2	65.4	66.4	68.8	3.4	13.6	13.0	10.7	-2.9
New Brunswick	58.6	55.5	56.6	-2.0	50.1	48.1	50.1	0.0	14.5	13.2	11.7	-2.8
Quebec	601.0	610.9	599.1	-1.9	504.7	528.6	531.3	26.6	16.0	13.5	11.3	-4.7
Ontario	1,029.9	1,057.6	1,048.1	18.2	885.2	927.0	937.9	52.7	14.1	12.3	10.5	-3.6
Manitoba	107.5	108.4	106.6	-0.9	97.8	97.3	98.7	0.9	8.9	10.2	7.4	-1.5
Saskatchewan	87.3	95.7	97.2	9.9	76.5	89.7	90.1	13.6	12.5	6.3	7.3	-5.2
Alberta	322.8	352.4	347.9	25.1	294.3	333.5	326.4	32.1	8.8	5.4	6.2	-2.6
British Columbia	355.2	372.1	375.3	20.1	325.8	342.5	346.7	20.9	8.3	8.0	7.6	-0.7



Table 5. CMAs, Canada

	CMA Data											
	(Unadjusted - three month moving average)											
	Unemployment Rate - %				Employment Rate - %				Participation Rate - %			
	Jan 2006	Dec 2006	Jan 2007	Annual Change	Jan 2006	Dec 2006	Jan 2007	Annual Change	Jan 2006	Dec 2006	Jan 2007	Annual Change
St. John's, Newfoundland and Labrador	8.3	6.7	7.4	(0.9)	59.0	61.9	60.3	1.3	64.3	66.4	65.2	0.9
Halifax	5.4	4.1	4.4	(1.0)	64.2	66.4	66.0	1.8	67.8	69.3	69.1	1.3
Saint John, New Brunswick	4.9	4.3	5.0	0.1	61.6	60.0	60.2	(1.4)	64.8	62.6	63.4	(1.4)
Saguenay	9.2	9.3	10.1	0.9	55.0	53.3	52.8	(2.2)	60.6	58.8	58.8	(1.8)
Québec	4.9	5.3	6.1	1.2	62.4	61.0	60.3	(2.1)	65.6	64.4	64.2	(1.4)
Trois-Rivières	8.5	6.8	7.2	(1.3)	57.9	56.0	56.7	(1.2)	63.3	60.2	61.1	(2.2)
Sherbrooke	7.7	7.1	7.5	(0.2)	59.8	59.9	60.1	0.3	64.8	64.5	65.0	0.2
Montreal	9.7	7.5	7.7	(2.0)	60.6	62.5	61.8	1.2	67.1	67.6	66.9	(0.2)
Ottawa-Gatineau	5.1	5.3	5.6	0.5	68.3	66.3	66.0	(2.3)	72.0	70.0	69.9	(2.1)
Greater Sudbury / Grand Sudbury	7.5	6.1	5.9	(1.6)	57.1	60.1	60.1	3.0	61.8	64.0	63.8	2.0
Oshawa	6.7	6.1	6.4	(0.3)	64.8	63.7	63.5	(1.3)	69.5	67.9	67.9	(1.6)
Toronto	5.9	6.0	6.0	0.1	64.1	64.1	64.2	0.1	68.1	68.2	68.3	0.2
Hamilton	5.4	5.5	5.9	0.5	64.4	62.3	61.9	(2.5)	68.1	65.9	65.8	(2.3)
St. Catharines - Niagara	7.4	5.8	6.6	(0.8)	56.5	57.8	56.4	(0.1)	61.0	61.3	60.4	(0.6)
London	6.1	5.8	5.8	(0.3)	63.4	65.9	65.5	2.1	67.5	69.9	69.5	2.0
Windsor	8.4	8.3	10.3	1.9	60.8	60.9	58.7	(2.1)	66.4	66.4	65.4	(1.0)
Kitchener	5.1	4.6	5.0	(0.1)	68.2	69.0	68.1	(0.1)	71.9	72.3	71.7	(0.2)
Thunder Bay	6.3	5.9	6.2	(0.1)	58.5	58.0	58.0	(0.5)	62.6	61.6	61.8	(0.8)
Winnipeg	4.0	4.4	4.9	0.9	66.1	67.0	66.4	0.3	68.8	70.0	69.8	1.0
Regina	5.0	4.1	4.4	(0.6)	65.8	69.8	69.1	3.3	69.3	72.7	72.3	3.0
Saskatoon	5.4	3.0	3.4	(2.0)	64.7	70.2	70.1	5.4	68.4	72.4	72.5	4.1
Calgary	4.6	2.7	2.9	(1.7)	71.0	74.4	73.9	2.9	74.4	76.5	76.2	1.8
Edmonton	4.3	3.5	3.9	(0.4)	65.1	67.6	67.7	2.6	68.0	70.0	70.4	2.4
Vancouver	4.5	4.0	4.3	(0.2)	63.1	64.0	63.6	0.5	66.0	66.6	66.5	0.5
Victoria	4.0	3.4	3.1	(0.9)	60.7	63.5	63.1	2.4	63.2	65.7	65.1	1.9

## Appendix II - Glossary

### ***Labour Force Survey (LFS)***

The following are key definitions used in the LFS. For a more detailed dictionary of concepts and definitions refer to Statistics Canada, *Guide to the Labour Force Survey*, Catalogue No. 71-543-GIE. Statistics Canada outlines other labour force information products and services in *Labour Force Survey Products and Services*, Catalogue No. 71-544-XIE.

**Population:** The target population covered by the survey corresponds to all persons aged 15 years and over residing in the provinces of Canada, with the exception of the following: 1) persons living on Indian Reserves, 2) full-time members of the regular Armed Forces, and 3) persons living in institutions.

**Labour Force:** The civilian non-institutional population 15 years of age and over that, during the survey reference week, was employed or unemployed and actively looking for work. Prior to 1966, persons aged 14 and over were covered by the survey.

**Employment:** Employed persons are those persons who, during the reference week, did any work for pay or profit, or had a job and were absent from work.

**Full-time Employment:** Refers to those persons who usually work 30 hours or more per week at their main or only job.

**Part-time Employment:** Refers to those persons who usually work less than 30 hours per week at their main or only job.

**Unemployment:** Unemployed persons are those persons who, during the reference week, were available for work and were either on temporary layoff, had looked for work in the past four weeks, or had a job to start within the next four weeks.

**Not in the Labour Force:** Persons not in the labour force are those who, during the reference week, were unwilling or unable to offer or supply

labour services under conditions existing in their labour markets, that is, they were neither employed nor unemployed.

**Unemployment Rate:** Unemployment rate is the number of unemployed persons expressed as a percentage of the labour force. The unemployment rate for a particular group (age, sex, marital status, etc.) is the number unemployed in that group expressed as a percentage of the labour force for that group.

**Participation Rate:** The total labour force expressed as a percentage of the population aged 15 years and over. The participation rate for a particular group (for example, women aged 25 years and over) is the labour force in that group expressed as a percentage of the population for that group.

**Employment Rate:** The number of employed persons expressed as a percentage of the population 15 years of age and over. The employment rate for a particular group (age, sex, marital status, province, etc.) is the number employed in that group expressed as a percentage of the population for that group.

**Seasonal Adjustment (s.a.):** Fluctuations in economic time series are caused by seasonal, cyclical and irregular movements. A seasonally adjusted series is one from which seasonal movements have been eliminated. Seasonal movements are defined as those which are caused by regular annual events such as climate, holidays, vacation periods and cycles related to crops, production and retail sales associated with Christmas and Easter. It should be noted that the seasonally adjusted series contain irregular as well as long-term cyclical fluctuations. The seasonal adjustment program is a complicated computer program which differentiates between these seasonal, cyclical and irregular movements in a series over a number of years and, on the basis of past movements, estimates appropriate seasonal

factors for current data. On an annual basis, the historic series of seasonally adjusted data are revised in light of the most recent information on changes in seasonality.

### ***Wages and Salaries***

---

***Wages and Salaries:*** Wages and salaries is an aggregate of many types of payments made to employees—regular remuneration, directors' fees, bonuses, commissions, gratuities, income in kind, taxable allowances, retroactive wage payments and stock options. Wages and salaries are estimated on a "gross" basis that is, prior to deductions for employees' contributions to income tax, employment insurance, pension funds, etc. Supplementary labour income, which is defined as payments made by employers for the future benefit of their employees, comprises employer contributions to employee welfare, pensions, workers compensation and employment insurance. Wages and salaries, as well as, supplementary labour income are the components of Labour Income (all compensation paid to employees).

Wages and salaries estimates are derived to supply the System of National Accounts (SNA) with the Labour Income component of the Gross Domestic Product (GDP). Monthly estimates of wages and salaries are published, on a quarterly basis, for 16 industry groups. Industrial coverage is based on the North American Standard Industrial Classification System (NAICS).

For a more detailed dictionary of concepts and definitions from Statistics Canada, *Estimates of Labour Income*, Catalogue No. 13F0022-XIE or refer to:

<http://www.statcan.ca/cgi-bin/imdb/p2SV.pl?Function=getSurvey&SDDS=2602&lang=en&db=IMDB&dbg=f&adm=8&dis=2>

### ***Average Weekly Earnings***

---

***Average Weekly Employment:*** For purposes of developing average weekly employment and average weekly earnings data, the target

population of the Statistics Canada Survey of Employment, Payrolls and Hours (SEPH), is composed of all employers in Canada, except, 1) those owners or partners of unincorporated business and professional practices, the self-employed, unpaid family workers, persons working outside Canada, casual workers for whom a T-4 is not required; 2) agriculture, fishing and trapping, private household services, religious organizations; and 3) the military. It draws its sample from the Business Register (BR) maintained by the Business Register Division of Statistics Canada and from a list of all businesses registered in Canada Customs and Revenue Agency's Business Number program with one or more active payroll deduction accounts.

***Average Weekly Earnings:*** The Survey of Employment, Earnings and Hours is produced from the combination of the Business Payroll Survey results and the payroll deductions administrative data received Canada Customs and Revenue Agency.

SEPH is Canada's only source of detailed information on the total number of paid employees, payrolls, and hours at detailed industrial, provincial and territorial levels.

For further information about the *Survey of Employment, Payrolls and Hours* (SEPH), No. 2612, refer to Statistics Canada, *Employment, Earnings and Hours*, monthly, Catalogue No. 71-002-XIB or annual, Catalogue No. 72F0023-XCB; *CANSIM Tables 281-0023, 281-0024, 281-0026 and 281-0027.*

### ***Employment Insurance (EI)***

---

***Employment Insurance Statistics:*** The *Employment Insurance Statistics Monthly* reports official statistics on the operation of the *Employment Insurance Statistics Program* and provides complementary labour market statistics. Statistics are produced from an administrative data source and may, from time to time, be affected by changes in the *Employment Insurance Act* or administrative procedures.

**Number of Beneficiaries:** The number of beneficiaries represents a count of persons who received Employment Insurance (EI) benefits during the *Labour Force Survey* reference week (usually containing the 15<sup>th</sup> day of the month).

**Regular Benefit Payments:** The regular benefit payments series measures the total of all monies received by individuals for the entire month, e.g., regular, training, job creation, sickness, self-employment, maternity, adoption, parental, retirement, fishing, work sharing and compassionate benefits.

For further information related to the EI data see Statistics Canada, *CANSIM Tables 276-0001 and 275-0006, 276-0011, 276-0015 and 276-0006.*

### **Public Sector**

---

**Public Sector:** The population of public sector employment consists of all institutional units controlled and mainly financed by governments (federal, provincial, territorial and local) in Canada, including their business enterprises. Thus, the term “government” presented in the Statistics Canada’s Public Sector Employment Survey includes all organizations controlled by any of the three levels of government that are not-for-profit and perform non-commercial services. The Canadian military (regular forces and reservists) and uniformed RCMP members are included in the federal government. Organizations controlled by government that operate as commercial corporations (such as Canada Post or Hydro-Quebec) are considered government business enterprises. The two combine to give the total public sector.

**Employment:** Employment is a measure of the number of individuals who work within a given industry. In other words, employment refers to the number of persons drawing pay for services rendered or for paid absences, regardless whether employed on a full time, part-time or on a temporary basis.

**Wages and Salaries:** Wages and salaries include directors' fees, bonuses, commissions, gratuities, income in kind, taxable allowances,

and retroactive wage payments. Wages and salaries are estimated on a gross basis, that is, before deductions for employees' contributions to income tax, unemployment insurance, or pension plans. Wages and salaries accumulating over time, for example, retroactive payments, are accounted for in the month and year in which they are paid. Supplementary labour income, such as employer contributions to pension, medical or similar plans are not included.

Further information on public sector employment can be downloaded from Statistics Canada, *Canadian Statistics* module; *CANSIM Tables 183-0002 and 183-0004.* As well, more detailed information, definitions, data sources and methods for Survey No. 1713 are available at:

<http://www.statcan.ca/cgi-bin/imdb/p2SV.pl?Function=getSurvey&SDDS=1713&lang=en&db=IMDB&dbg=f&adm=8&dis=2>

