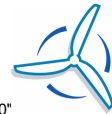


Wind Resource Map of a Section of Nova Scotia (80 m)



62°30'0"W

62°20'0"W

62°10'0"W

62°0'0"W

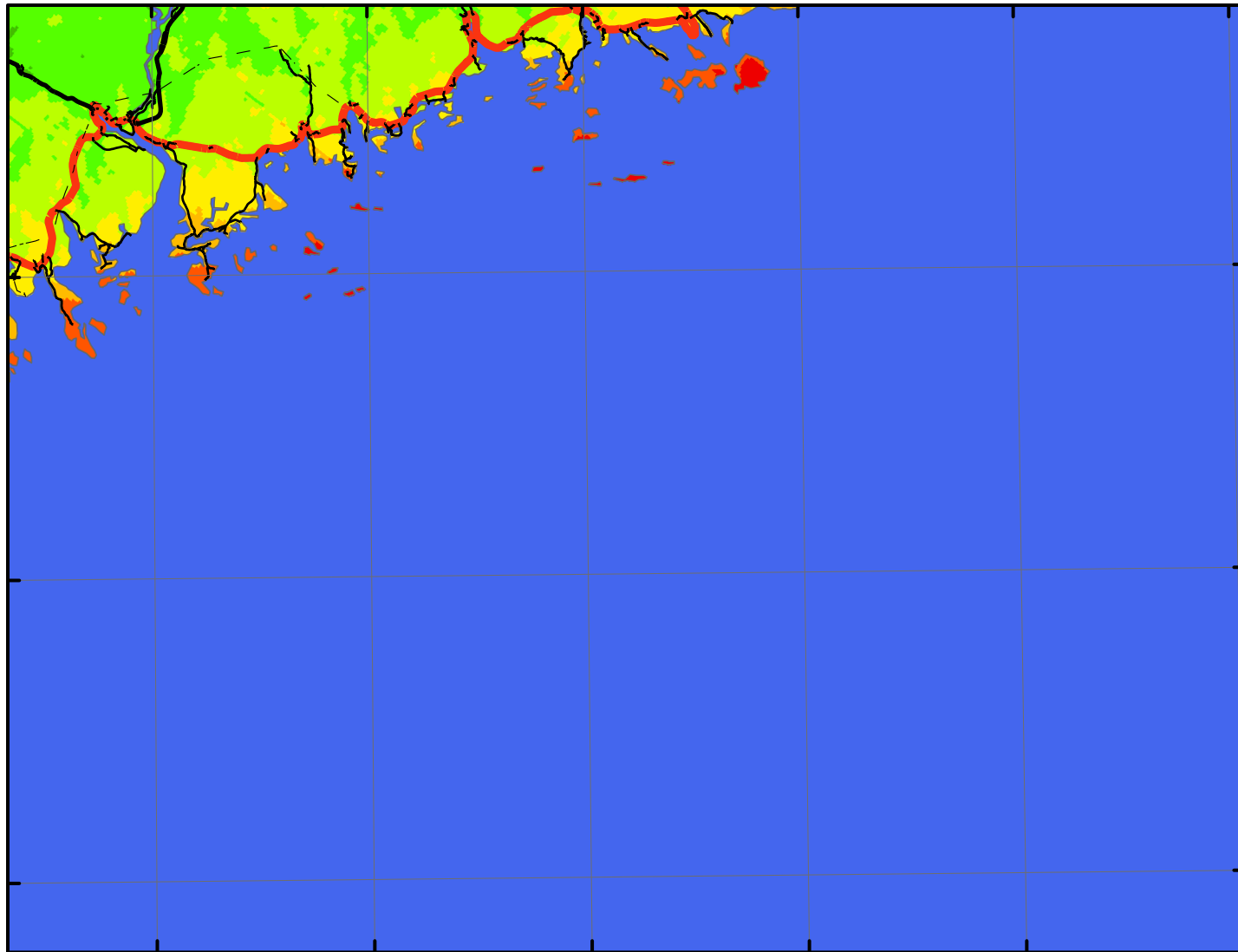
61°50'0"W

61°40'0"...

44°50'0"N

44°40'0"N

44°30'0"N



Projection: NAD 1983 UTM Zone 20N

Date: September 18, 2007

